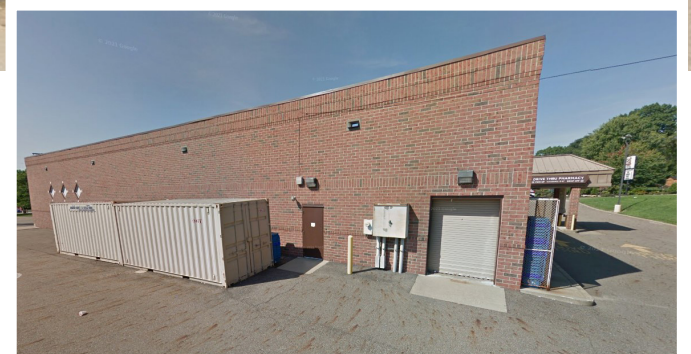




3030 Market Ave N
Canton, Ohio 44714

TOTAL SQ FT	11,335
SALE PRICE	\$1,700,000.00
LEASE	\$13.25/SF/NNN
LAND AREA	1.12
PARCEL	5218037
YEAR BUILT	1998
ZONING	B1
FRONTAGE	213.50'
TRAFFIC COUNT	15,256 - Market 9,012 - 30th Street
TAXES	\$32,820.56/year



Property Features

- Former Rite Aid located near the high traffic intersection of Market Ave N and 30th Street.
- Drive thru, rear overhead door.

Jared Sanford

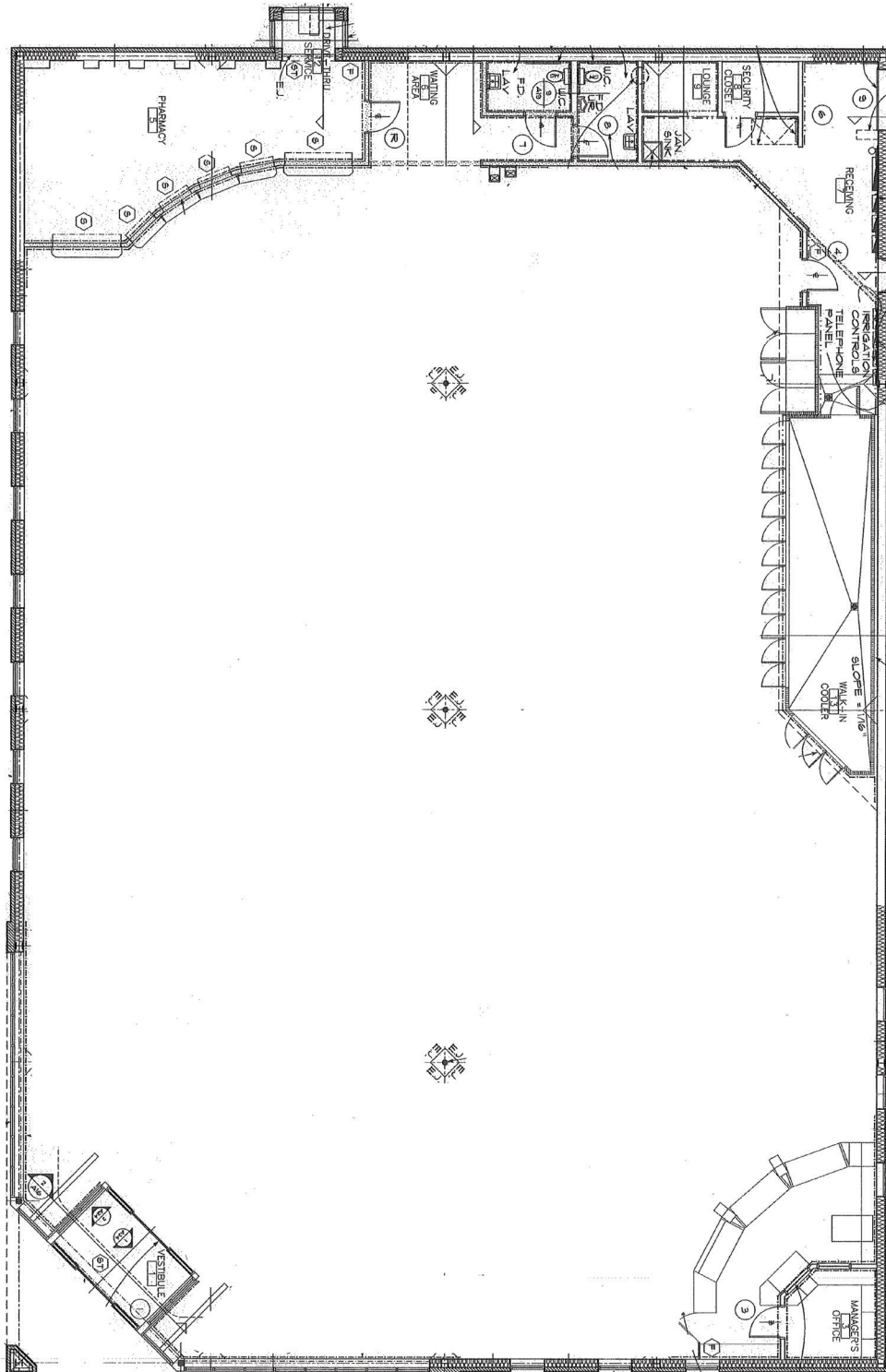
330 354 3466 • jared@naispring.com

Sean Sanford

330 284 0331 • sean@naispring.com

FOR SALE/LEASE

Floor Plan

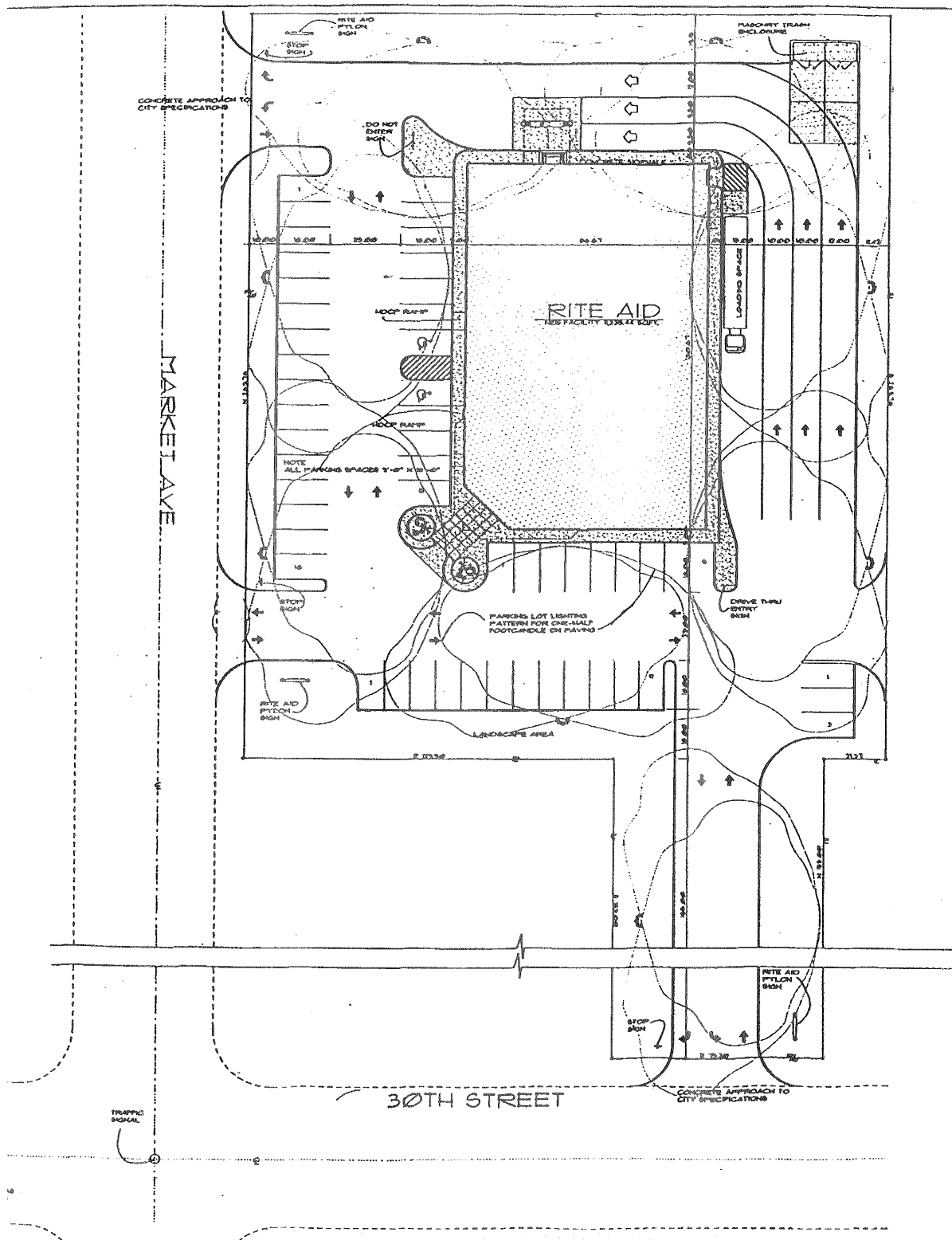


NO WARRANTY OR REPRESENTATION, EXPRESS OR IMPLIED, IS MADE AS TO THE ACCURACY OF THE INFORMATION CONTAINED HEREIN, AND THE SAME IS SUBMITTED SUBJECT TO ERRORS, OMISSIONS, CHANGE OF PRICE, RENTAL OR OTHER CONDITIONS, PRIOR SALE, LEASE OR FINANCING, OR WITHDRAWAL WITHOUT NOTICE, AND OF ANY SPECIAL LISTING CONDITIONS IMPOSED BY OUR PRINCIPALS NO WARRANTIES OR REPRESENTATIONS ARE MADE AS TO THE CONDITION OF THE PROPERTY OR ANY HAZARDS CONTAINED THEREIN ARE ANY TO BE IMPLIED.

8234 Pittsburg Ave NW
North Canton, Ohio 44720
330-966-8800
naispring.com

FOR SALE/LEASE

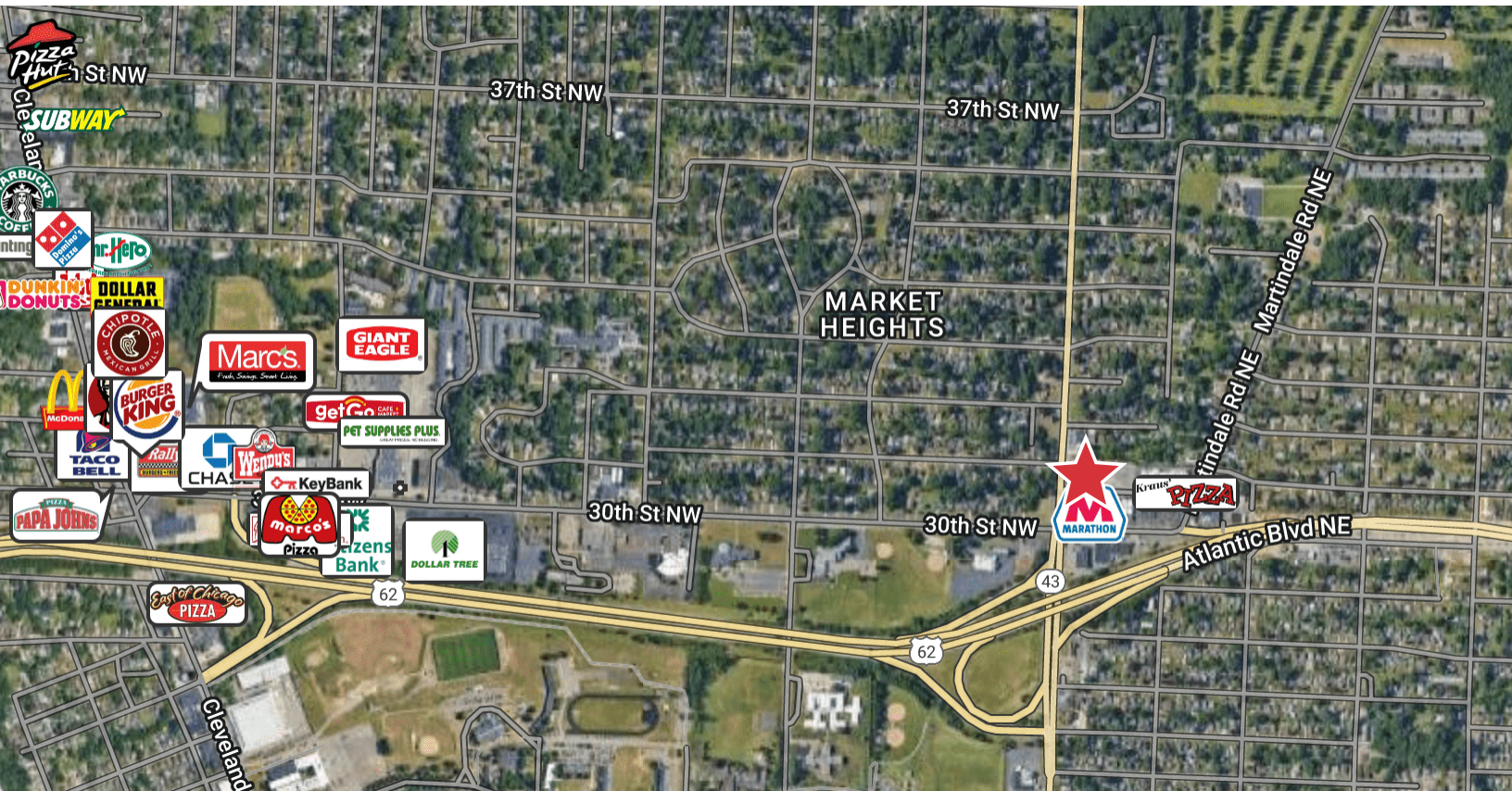
Site Plan



NO WARRANTY OR REPRESENTATION, EXPRESS OR IMPLIED, IS MADE AS TO THE ACCURACY OF THE INFORMATION CONTAINED HEREIN, AND THE SAME IS SUBMITTED SUBJECT TO ERRORS, OMISSIONS, CHANGE OF PRICE, RENTAL OR OTHER CONDITIONS, PRIOR SALE, LEASE OR FINANCING, OR WITHDRAWAL WITHOUT NOTICE, AND OF ANY SPECIAL LISTING CONDITIONS IMPOSED BY OUR PRINCIPALS NO WARRANTIES OR REPRESENTATIONS ARE MADE AS TO THE CONDITION OF THE PROPERTY OR ANY HAZARDS CONTAINED THEREIN ARE ANY TO BE IMPLIED.

8234 Pittsburg Ave NW
 North Canton, Ohio 44720
 330-966-8800
naispring.com

FOR SALE/LEASE Maps



NO WARRANTY OR REPRESENTATION, EXPRESS OR IMPLIED, IS MADE AS TO THE ACCURACY OF THE INFORMATION CONTAINED HEREIN, AND THE SAME IS SUBMITTED SUBJECT TO ERRORS, OMISSIONS, CHANGE OF PRICE, RENTAL OR OTHER CONDITIONS, PRIOR SALE, LEASE OR FINANCING, OR WITHDRAWAL WITHOUT NOTICE, AND OF ANY SPECIAL LISTING CONDITIONS IMPOSED BY OUR PRINCIPALS NO WARRANTIES OR REPRESENTATIONS ARE MADE AS TO THE CONDITION OF THE PROPERTY OR ANY HAZARDS CONTAINED THEREIN ARE ANY TO BE IMPLIED.

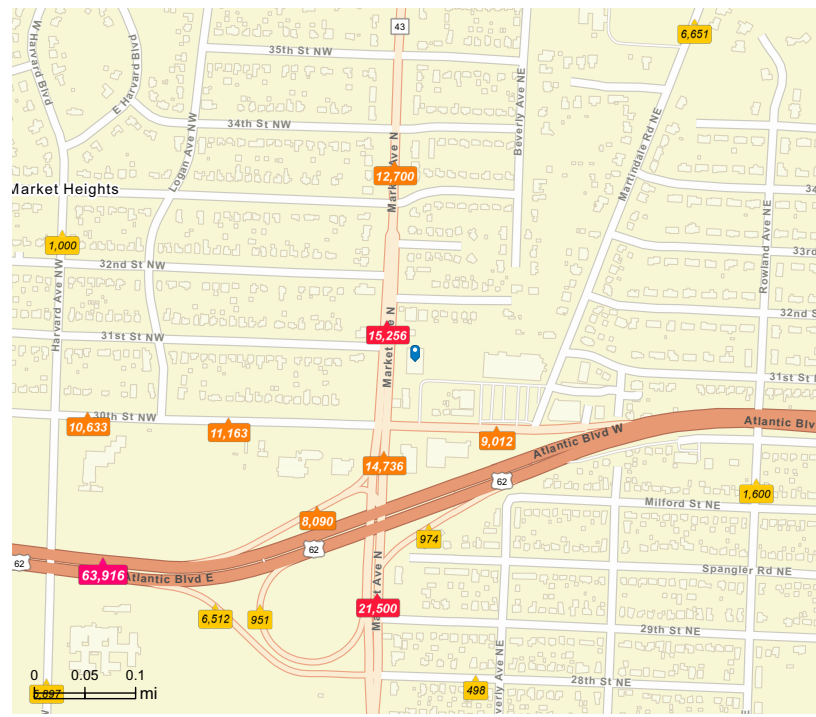
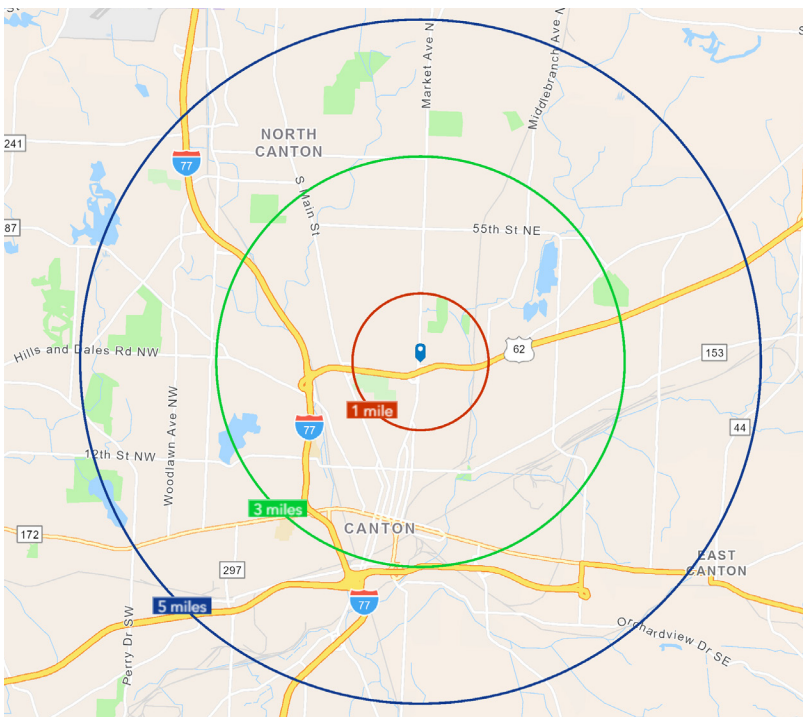
8234 Pittsburg Ave NW
North Canton, Ohio 44720
330-966-8800
naispring.com

FOR SALE/LEASE

Demographics

2024 Summary

	1 Mile	3 Miles	5 Miles
Population	10,824	78,335	150,532
Households	4,723	33,683	65,665
Families	2,393	18,299	36,844
Average Household Size	2.13	2.24	2.24
Owner Occupied Housing Units	2,819	19,112	39,779
Renter Occupied Housing Units	1,904	14,571	25,886
Median Age	40.7	40.1	41.1
Median Household Income	\$59,782	\$48,994	\$55,776
Average Household Income	\$74,201	\$69,398	\$77,376



NO WARRANTY OR REPRESENTATION, EXPRESS OR IMPLIED, IS MADE AS TO THE ACCURACY OF THE INFORMATION CONTAINED HEREIN, AND THE SAME IS SUBMITTED SUBJECT TO ERRORS, OMISSIONS, CHANGE OF PRICE, RENTAL OR OTHER CONDITIONS, PRIOR SALE, LEASE OR FINANCING, OR WITHDRAWAL WITHOUT NOTICE, AND OF ANY SPECIAL LISTING CONDITIONS IMPOSED BY OUR PRINCIPALS NO WARRANTIES OR REPRESENTATIONS ARE MADE AS TO THE CONDITION OF THE PROPERTY OR ANY HAZARDS CONTAINED THEREIN ARE ANY TO BE IMPLIED.

8234 Pittsburg Ave NW
 North Canton, Ohio 44720
 330-966-8800
naispring.com