



Property Details

- Two Story, 8,432± SF Office Building
- Situated on 2.3± Acres Just Blocks From Historic Downtown DeLand
- Great Visibility With Monument Signage available
- New Passenger Elevator
- Abundant Parking
- Move-In Ready

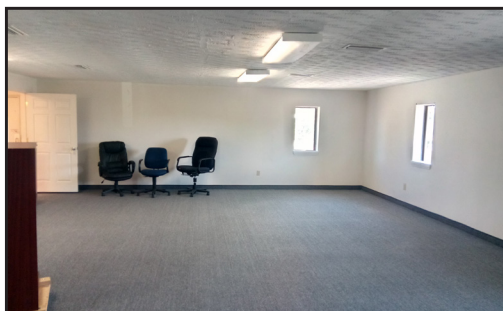
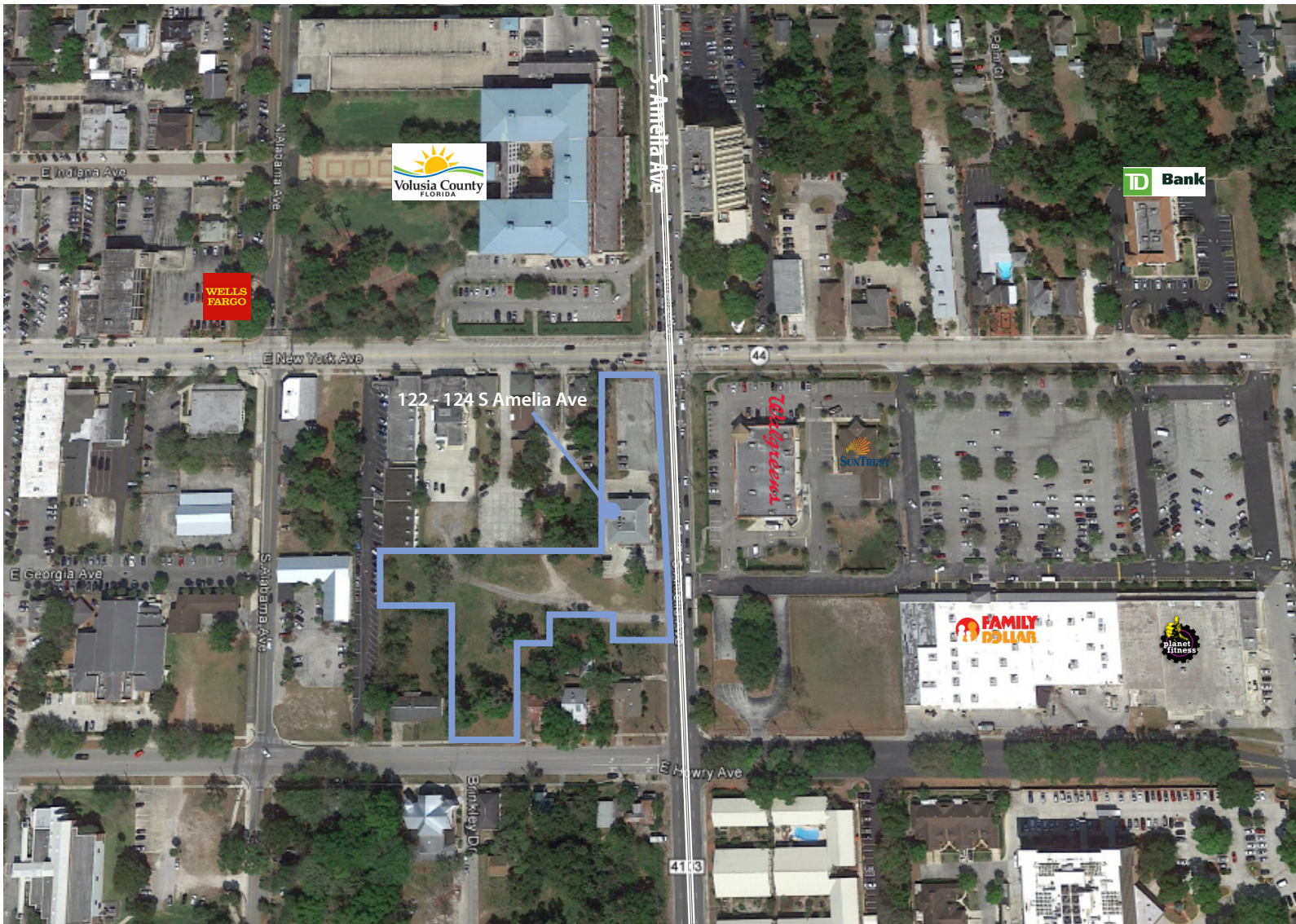
2nd Floor - 4,200± SF Available



Emily Zinaich

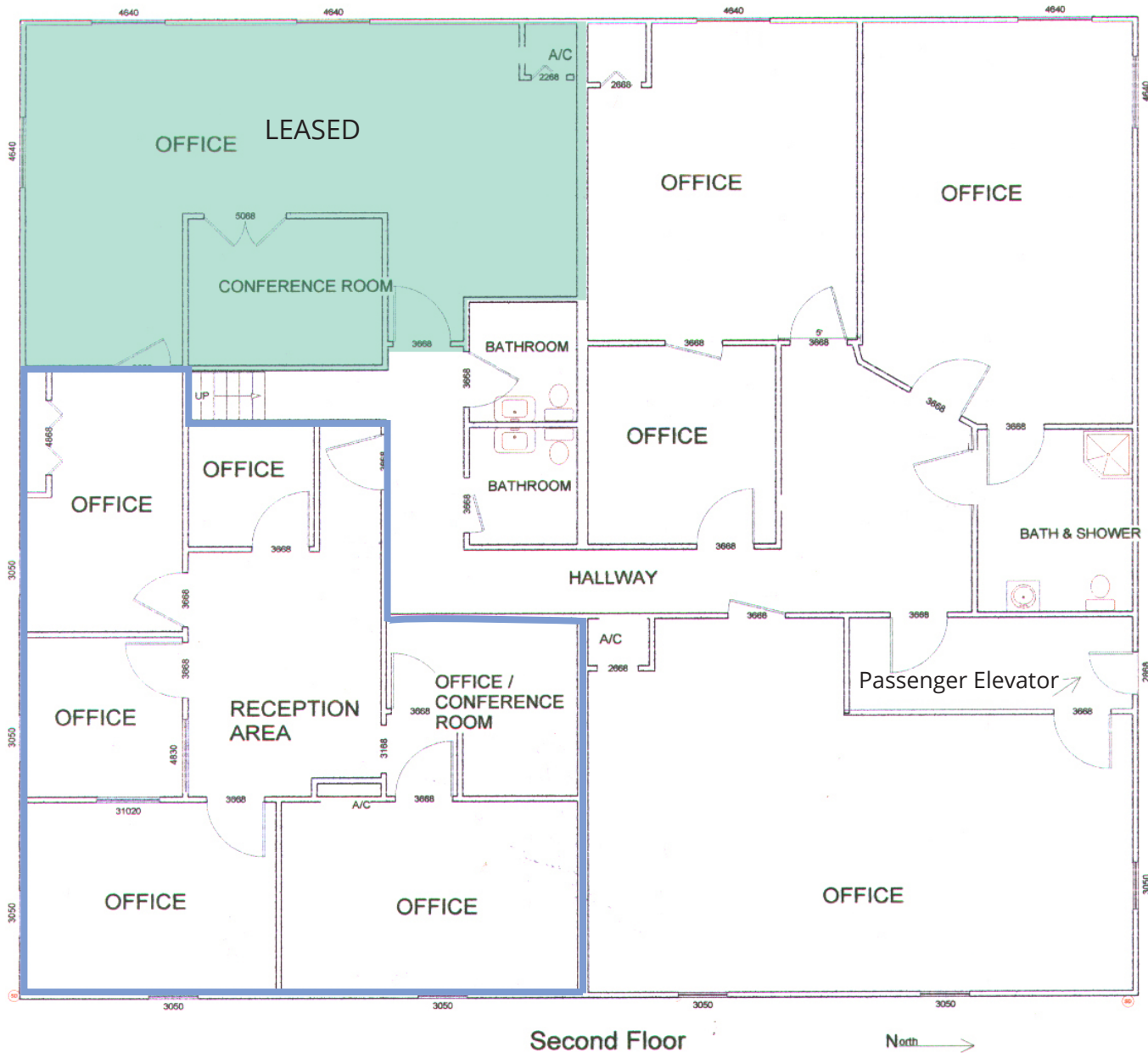
Senior Vice President
D 407.440.6641
emily.zinaich@avisonyoung.com

135 W Central Blvd
Suite 700
Orlando, FL 32801



Emily Zinaich
Senior Vice President
D 407.440.6641
emily.zinaich@avisonyoung.com

135 W Central Blvd
Suite 700
Orlando, FL 32801



Emily Zinaich
Senior Vice President
D 407.440.6641
emily.zinaich@avisonyoung.com

135 W Central Blvd
Suite 700
Orlando, FL 32801