

IN THE
HEART OF
HUNTINGTON
BEACH,
CALIFORNIA.



A SOULFUL
OFFERING OF
WATERFRONT
OFFICE SPACE.



16360 / 16390 / 16400 PACIFIC COAST HIGHWAY, HUNTINGTON BEACH, CA



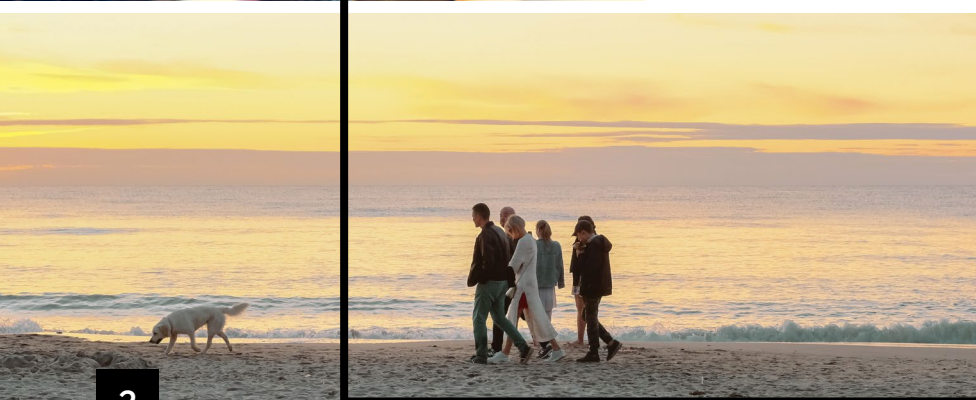
PETERS LANDING HUNTINGTON BEACH, CA

With the best Orange County retail and restaurant concepts just steps away and great access to the region's top residential areas, Peter's Landing exemplifies a Southern California work-play environment.

Peter's Landing offers ready-made suites that allow executives to make quick business decisions, while the center's marina and beach access promote healthy, active lifestyles for company employees.



PREMIUM
OFFICE
SPACES
FOR LEASE.



SOUTHERN CALIFORNIA CULTURE AT ITS BEST



Healthy Workplaces:

- Operable Windows
- Balconies
- Unobstructed Marina Views



Renovated Common Areas with Open-Air Corridors



Convenient Freeway Access



Ample Surface Parking



Reimagined Park Plaza for Collaborative Use



On-Site Property Management



Marina + Beach Access



On-Site Amenities:

- Starbucks Coffee
 - Salon Services
 - Mother's Market
 - Yoga/Fitness
 - Premium Restaurants + Brewery
-



*PETER'S LANDING
IS AN AUTHENTIC
SOCAL LIFESTYLE.*

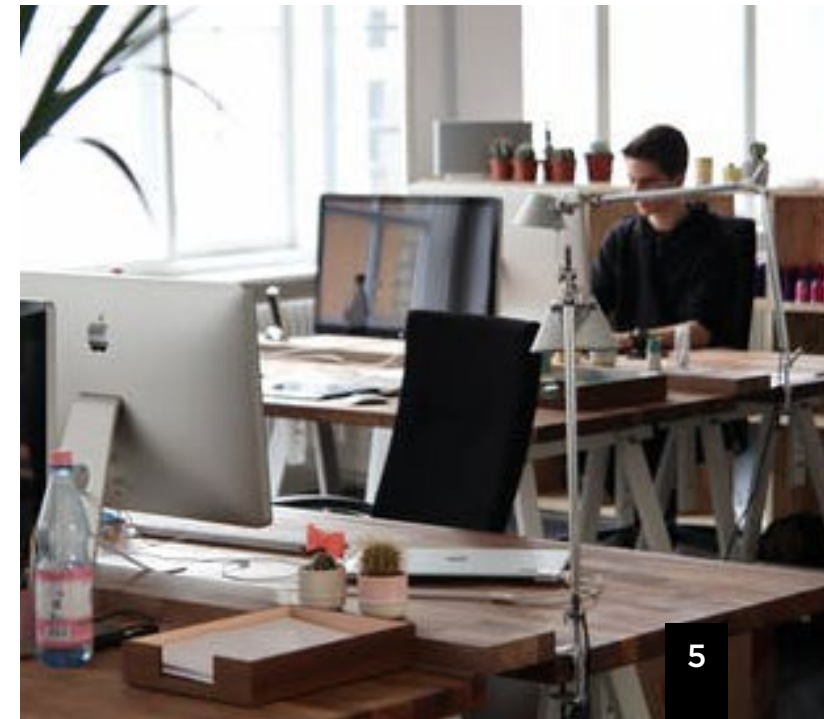


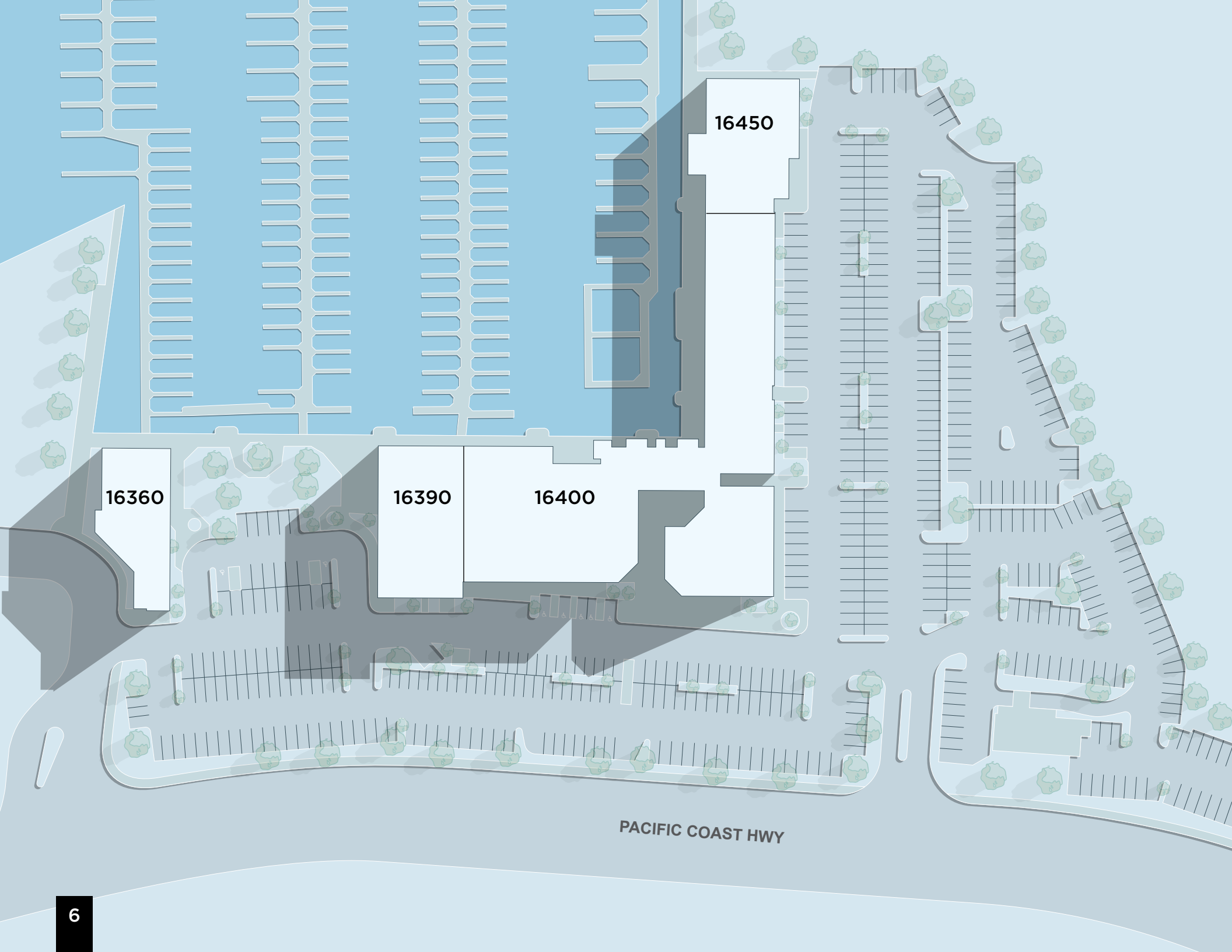
*Golden
Road
Brewery
Now
Open*





**PREMIUM
ON-SITE RETAIL
AMENITIES.**





16360

16390

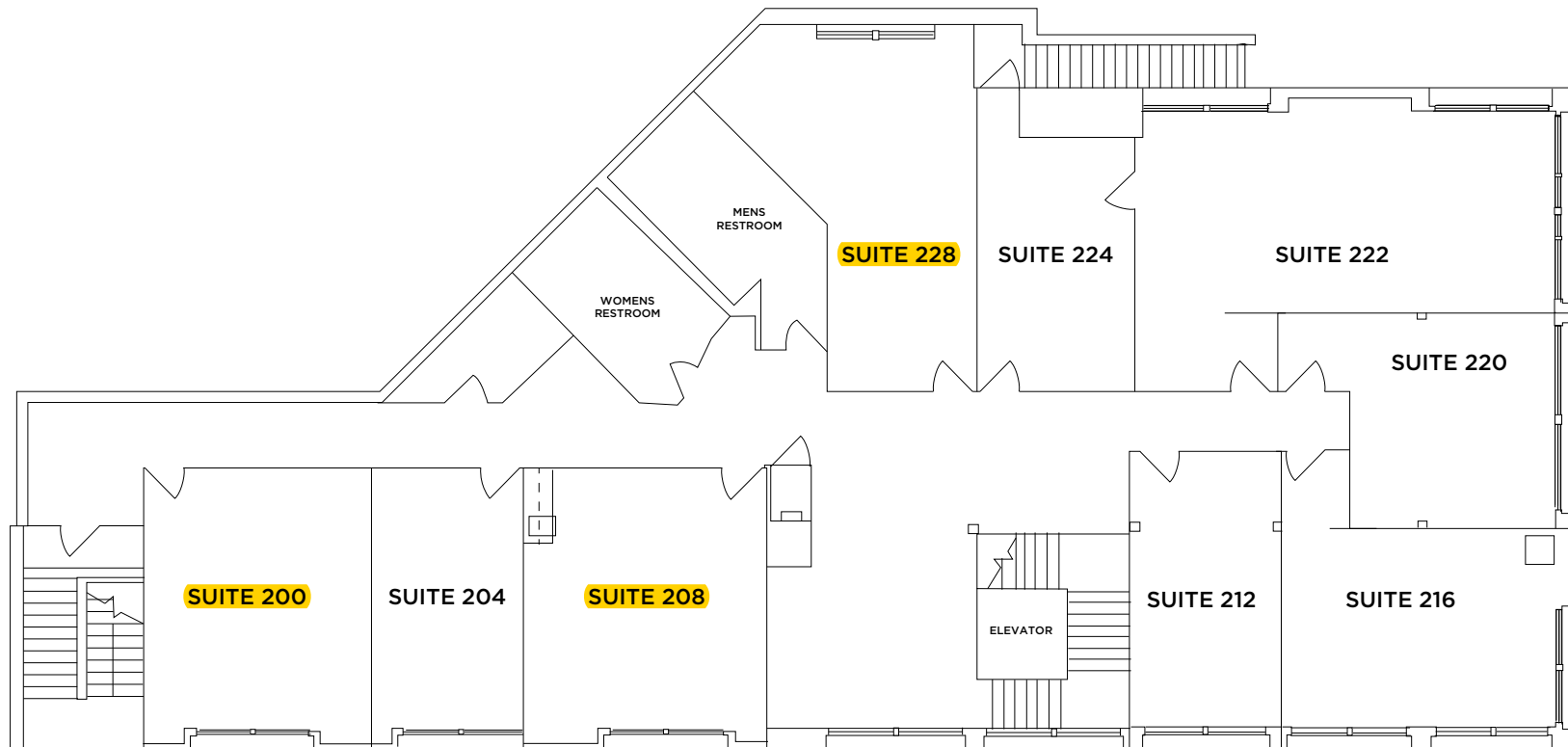
16400

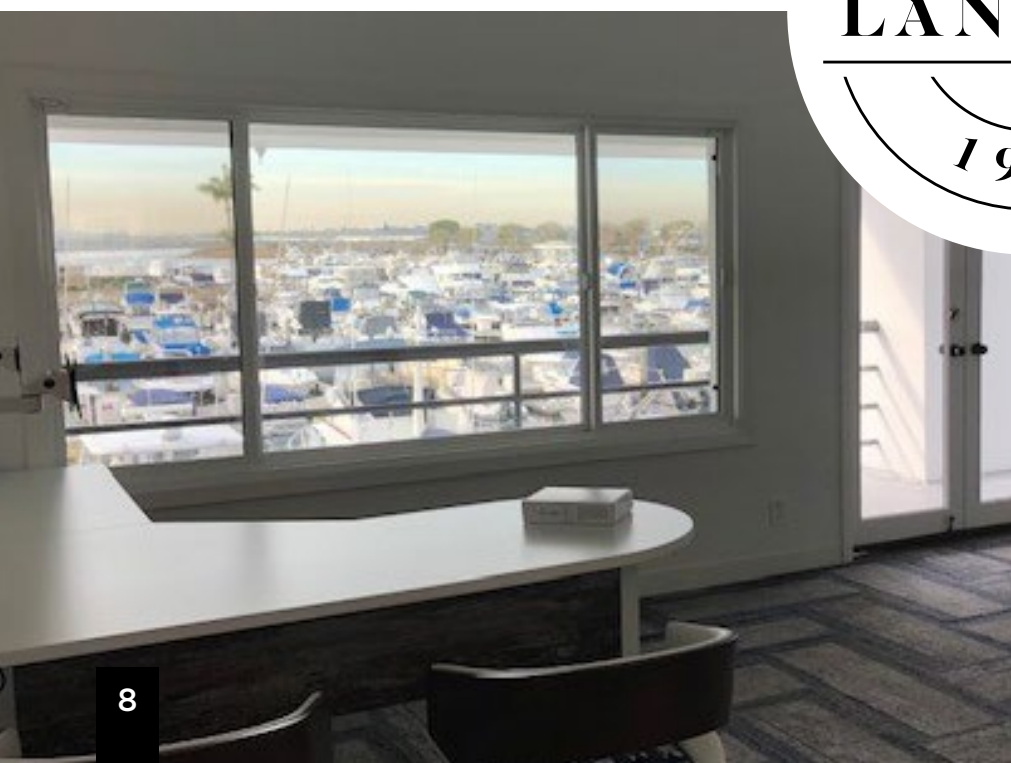
16450

PACIFIC COAST HWY

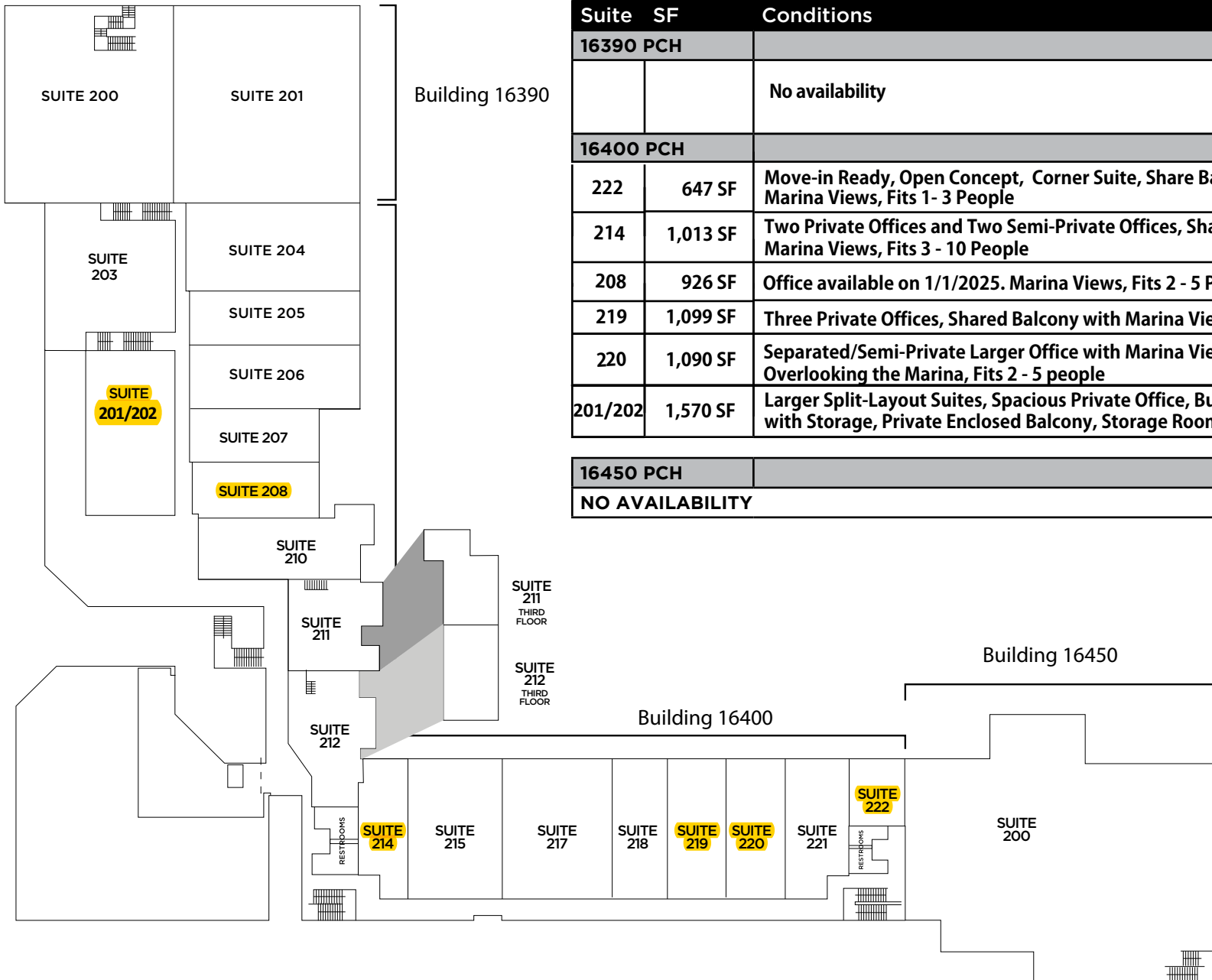
Building 16360 | Available Second Floor Office Spaces

Suite	SF	Conditions
200	508 SF	Park & Marina Views - Available to sublease
208	536 SF	Park & Marina Views
228	547 SF	Easily accessible, North facing





Building 16390/16400/16450 | Available Second + Third Floor Office Spaces



Suite	SF	Conditions
16390 PCH		
		No availability
16400 PCH		
222	647 SF	Move-in Ready, Open Concept, Corner Suite, Share Balcony with Marina Views, Fits 1- 3 People
214	1,013 SF	Two Private Offices and Two Semi-Private Offices, Shared Balcony with Marina Views, Fits 3 - 10 People
208	926 SF	Office available on 1/1/2025. Marina Views, Fits 2 - 5 People
219	1,099 SF	Three Private Offices, Shared Balcony with Marina Views, Fits 3 - 10 People
220	1,090 SF	Separated/Semi-Private Larger Office with Marina Views, Shared Balcony Overlooking the Marina, Fits 2 - 5 people
201/202	1,570 SF	Larger Split-Layout Suites, Spacious Private Office, Built-in Reception Desk with Storage, Private Enclosed Balcony, Storage Room, Fits 5+ People
16450 PCH		
NO AVAILABILITY		



JULIEN BIECKERT
619.270.4683
JBieckert@pendulumpp.com