



**5321 FLATLANDS AVE,
BROOKLYN, NY 11234**



Office Was Used for Outpatient Procedures

PROPERTY INFORMATION

LOCATION	Corner of Flatlands Ave & E 54th St
BLOCK / LOT	7779 / 1, 74
BLDG GROSS SF	6,100 Level 1: ~4,100 (60'X72' approx) Level 2: ~2,000
LOT GROSS SF	17,500
ZONING	R5

► Lease Price Upon Request

HIGHLIGHTS

- ✓ CORNER PROPERTY
- ✓ HVAC
- ✓ ROOF HEIGHT: 16 FT
- ✓ YEAR ALTERED: 2013
- ✓ ADA ELEVATOR
- ✓ MULTIPLE ROOMS
- ✓ MULTIPLE ADA BATHROOMS

For complete offering information or inspection, please contact broker:

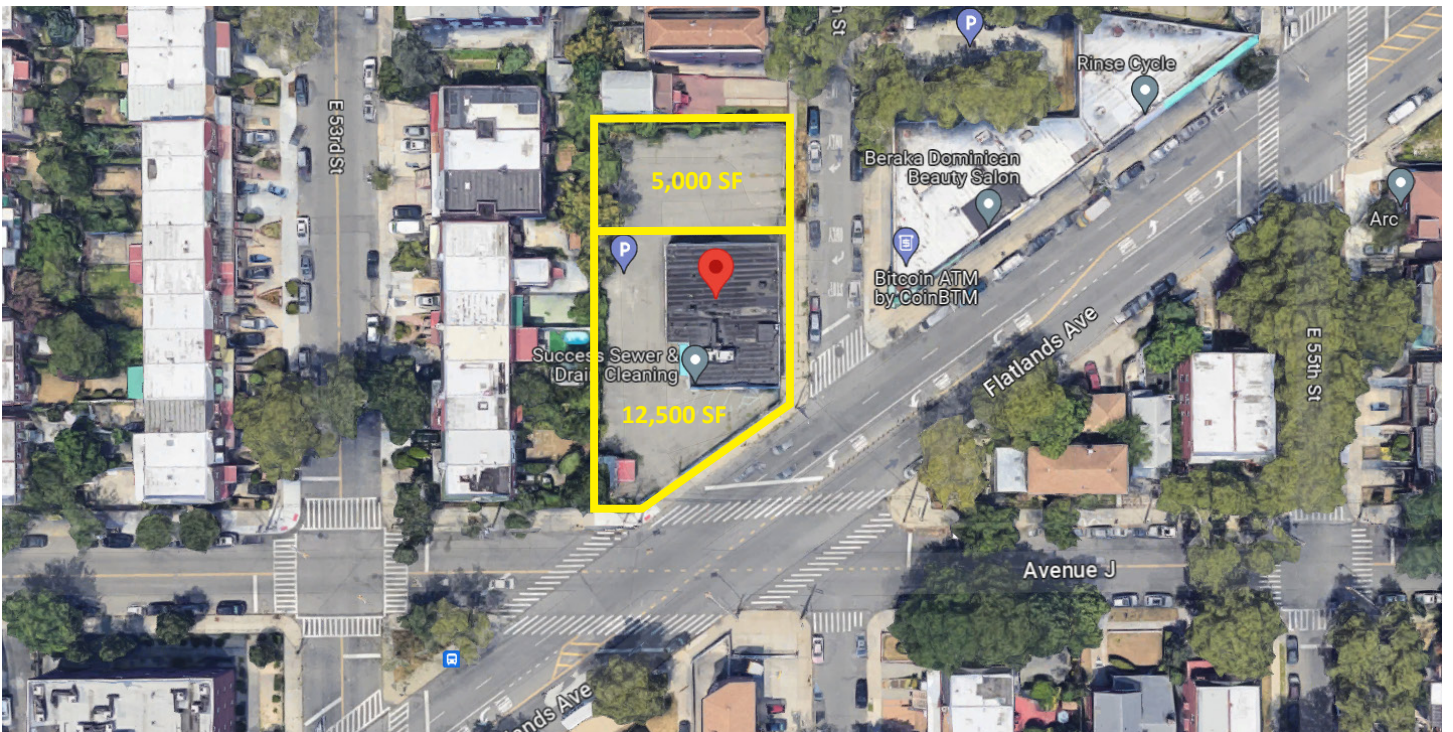
LEON LIPO
LLIPO@CTNYC.COM
646-942-4172



5321 FLATLANDS AVE, BROOKLYN, NY 11234

**FOR
LEASE**

~ **6,100 SF** Corner Medical Office on **17,500 SF** Lot



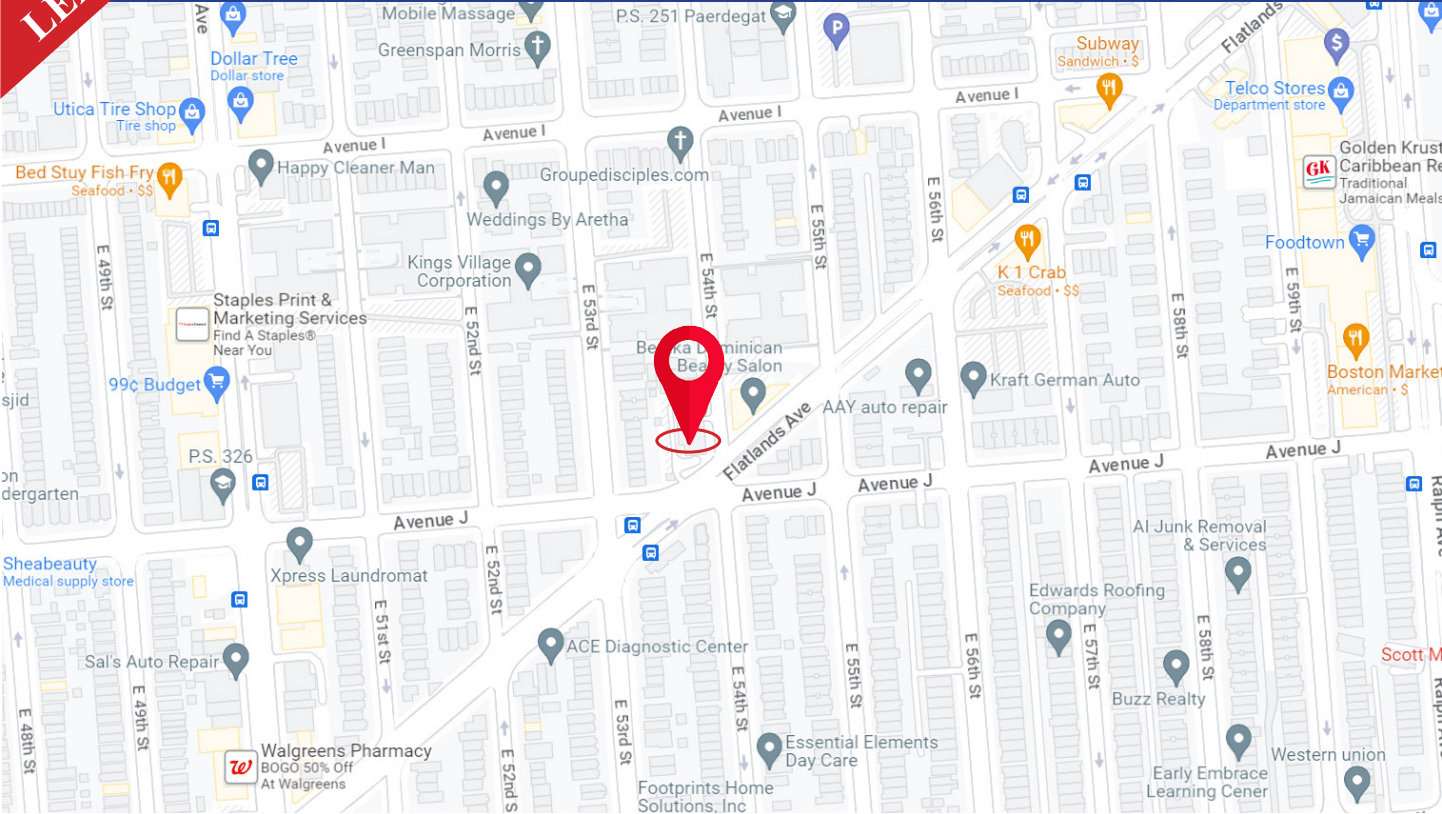
97-77 QUEENS BLVD. SUITE 1120, REGO PARK, NY 11374 • 718-937-8100 • WWW.CTNYC.COM

All information is from sources deemed reliable and is submitted subject to errors, omission, changes of price or other conditions, prior to sale, rent, and withdrawal without notice.



5321 FLATLANDS AVE, BROOKLYN, NY 11234

FOR LEASE ~ **6,100 SF** Corner Medical Office on **17,500 SF** Lot



TRANSPORTATION

TRAINS



BUS



ROADS

