

Perrin 2 Center
1050 E. Perrin Dr., Fresno, CA. 93720



FOR LEASE

GREG MAROOT

Broker Associate

(559) 994-0254

Greg.Maroot@remax.net

DRE #01102553, CA.

SPACES DESCRIPTION

Northeast Fresno office space(s) available to lease in the highly touted intersection of Perrin Ave. & Champlain Dr. Current configuration is ideal for a call-center or a health care insurance telemarketing company. Space currently comprises of 40 open space built-in cubicles, 2 private offices, 2 private restrooms, large bull-pin/open area, kitchen and reception area with a desk. Landlord may consider dividing Suites #107 (±1,855 sqft) & #109 (±1,909 sqft.) into separate spaces.

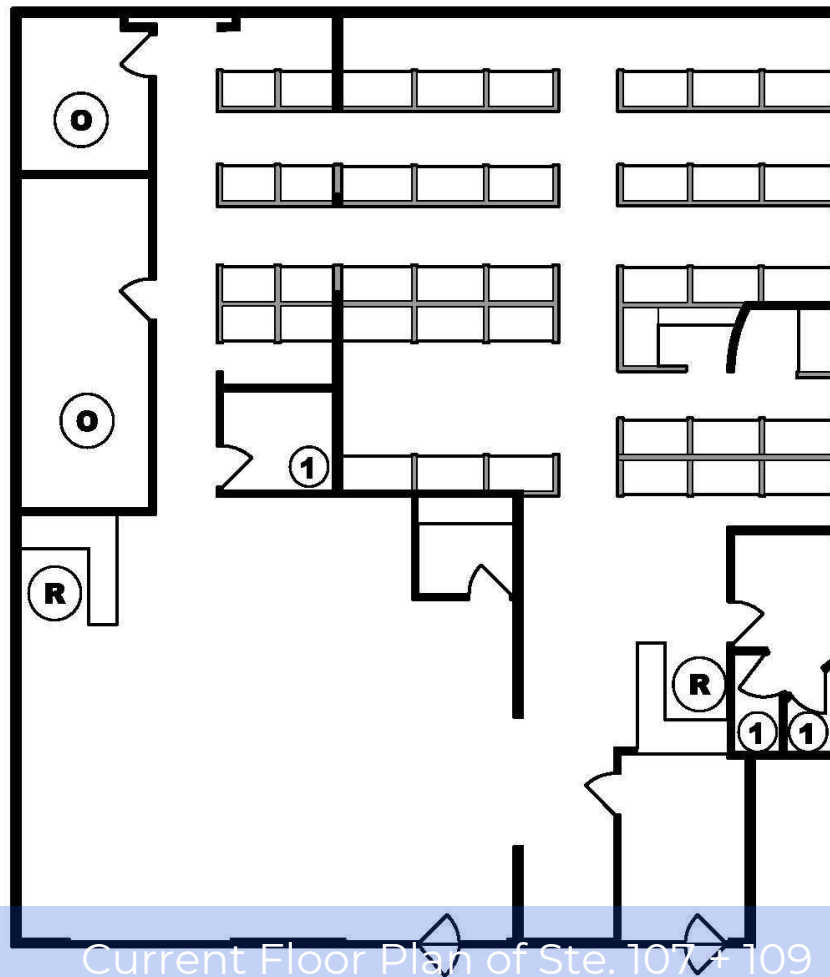
LOCATION DESCRIPTION

Located at the highly coveted Northeast corner of Perrin Ave. & Champlain Dr. strategically located near Copper River, Woodward Park, Palm Bluffs and in close proximity to the premier shopping centers, restaurants and financial & medical institutions of Fresno. Average Household Income is \$133,038 and Medium Home value is \$463,242 within a 1 mile radius (according to 2024 Costar Group Demographics report)

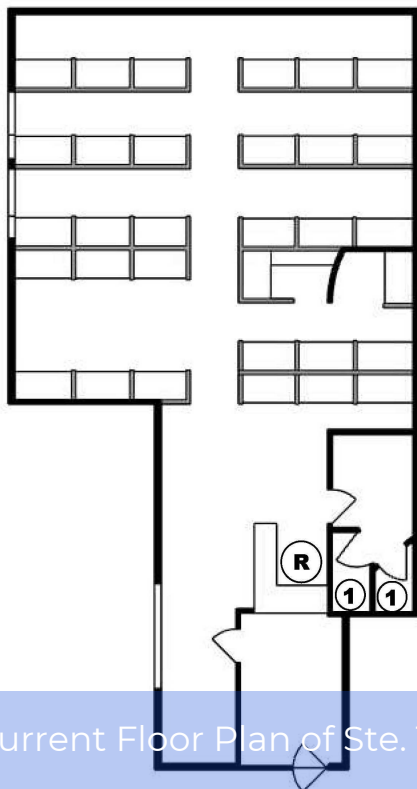
SUMMARY

Available:	
Suite 107	±1,855 sqft.
Suite 109	±1,909 sqft.
Total	±3,764 sqft.
Lease Rate:	Contact Listing Agent
Parking:	11 spaces
Year Built:	2005
Zoning:	O - Office
Signage:	Available on the building facing Perrin Ave.
Traffic Count	2022 AVD 11,000 Perrin/ Champlain

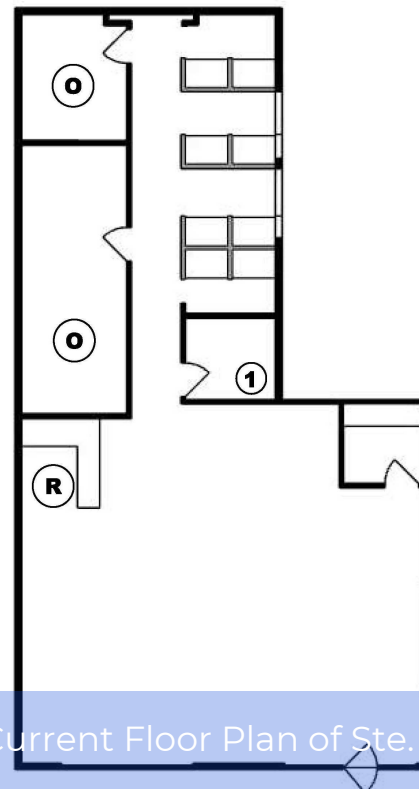
RE/MAX GOLD
COMMERCIAL



Current Floor Plan of Ste. 107 + 109



Current Floor Plan of Ste. 107



Current Floor Plan of Ste. 109

