



## PROPERTY DESCRIPTION

Conveniently situated at 209 E Lafayette St, Jackson, TN, 38301, this exceptional property offers a prime leasing opportunity for businesses seeking a modern, dynamic office space. Boasting high ceilings and state-of-the-art facilities, the building is an ideal fit for a gym or fitness center. With ample street parking and easy access to major transportation routes, the property presents an attractive opportunity for a fitness facility seeking a vibrant and dynamic space in the heart of Jackson, TN.

## CUSTOM HEADER

- 6,080 square feet of retail and office space
- Flexible lease terms and customization options
- Prime location with high visibility and foot traffic
- Apartments above unit
- Ample parking for customers and employees
- Historic and attractive exterior and interior design
- Close proximity to major highways and transportation hubs
- Walkable downtown location
- Various dining and shopping options nearby
- Professional property management and maintenance services



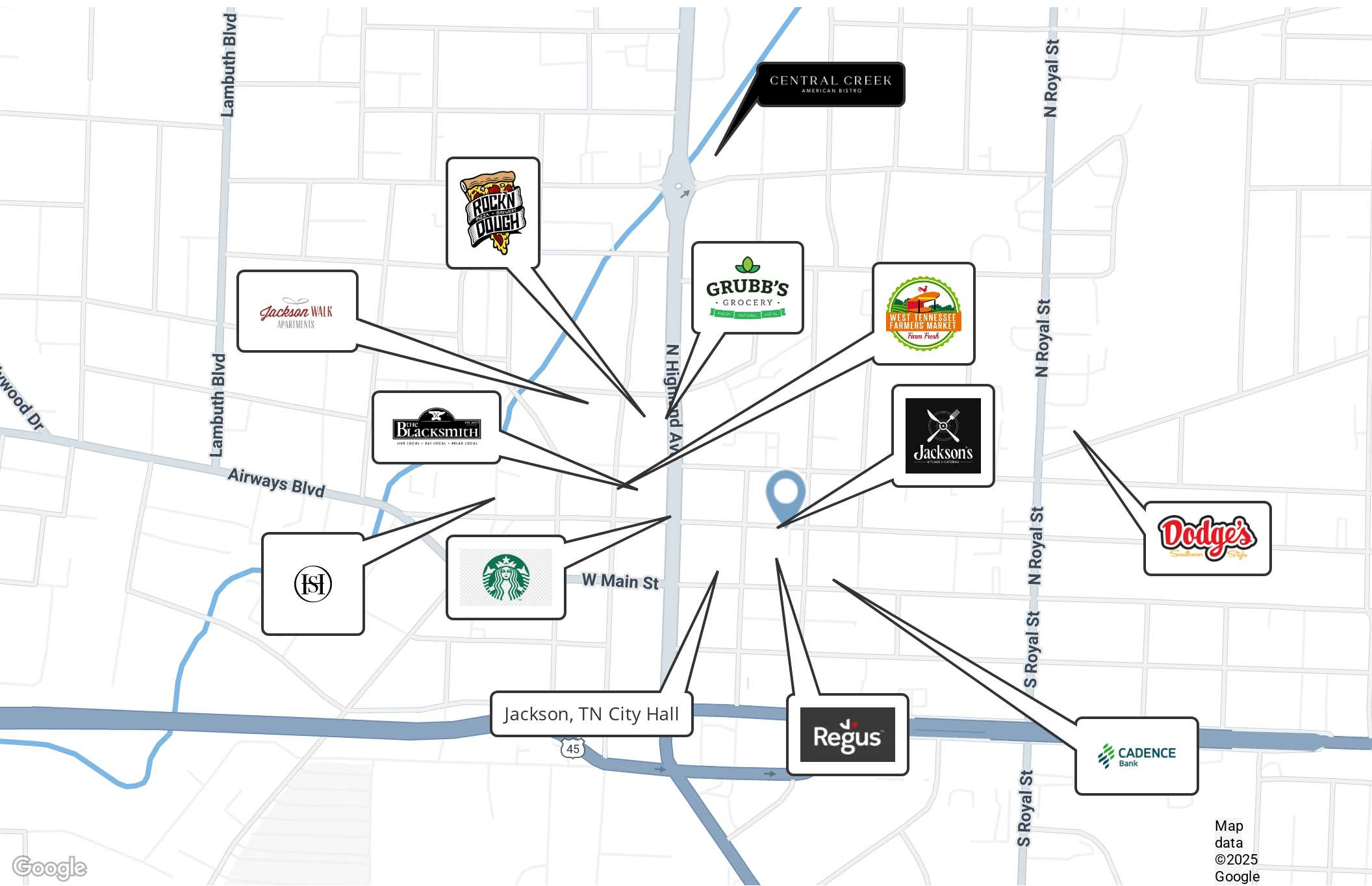
## OFFERING SUMMARY

Lease Rate:	\$20.00 SF/yr (NNN)
Number of Units:	1
Available SF:	6,080 SF
Lot Size:	10,726 SF
Building Size:	6,080 SF

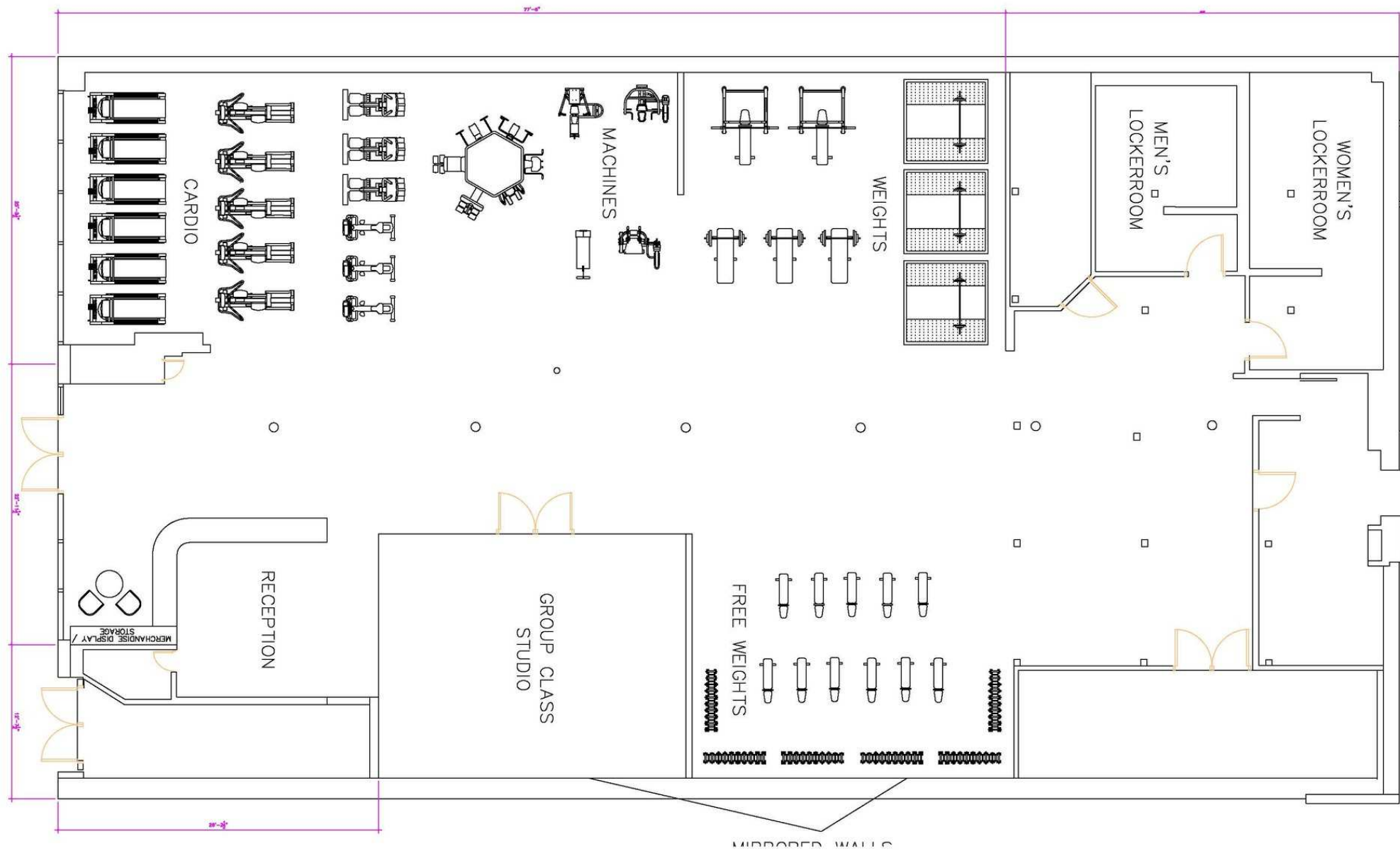
## DISCLAIMER

All images shown are architectural renderings and are intended for illustrative purposes only. They do not represent the final condition or finishes of the space. Actual design, layout, materials, and features may vary based on final construction and tenant specifications. Listing price is subject to change and may vary depending on desired buildout, lease terms, and other negotiated factors. All information deemed reliable but not guaranteed.

209 E LAFAYETTE ST, JACKSON, TN 38301

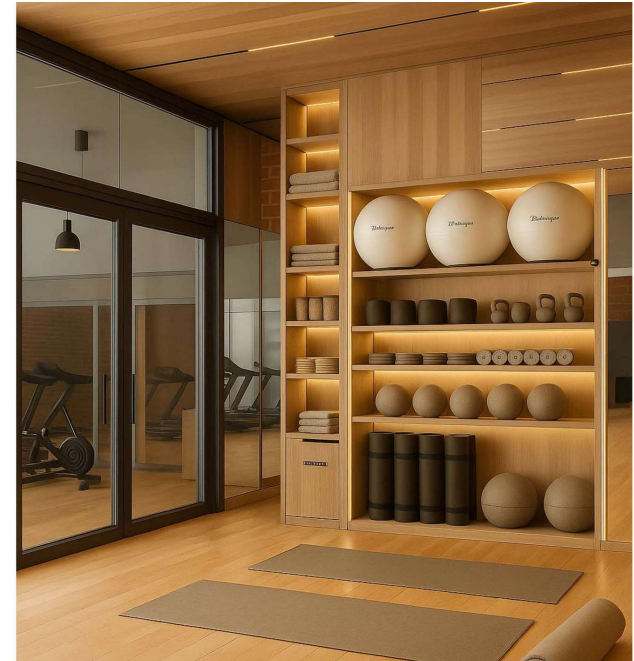


Map data  
©2025  
Google





209 E LAFAYETTE ST, JACKSON, TN 38301



## 209 E LAFAYETTE ST, JACKSON, TN 38301



### POPULATION

	0.5 MILES	1 MILE	4 MILES
Total Population	2,621	6,869	38,735
Average Age	38	38	39
Average Age (Male)	38	37	37
Average Age (Female)	41	40	40

### HOUSEHOLDS & INCOME

	0.5 MILES	1 MILE	4 MILES
Total Households	841	2,541	15,723
# of Persons per HH	3.1	2.7	2.5
Average HH Income	\$35,036	\$39,648	\$54,455
Average House Value	\$119,850	\$131,750	\$182,856

Demographics data derived from AlphaMap