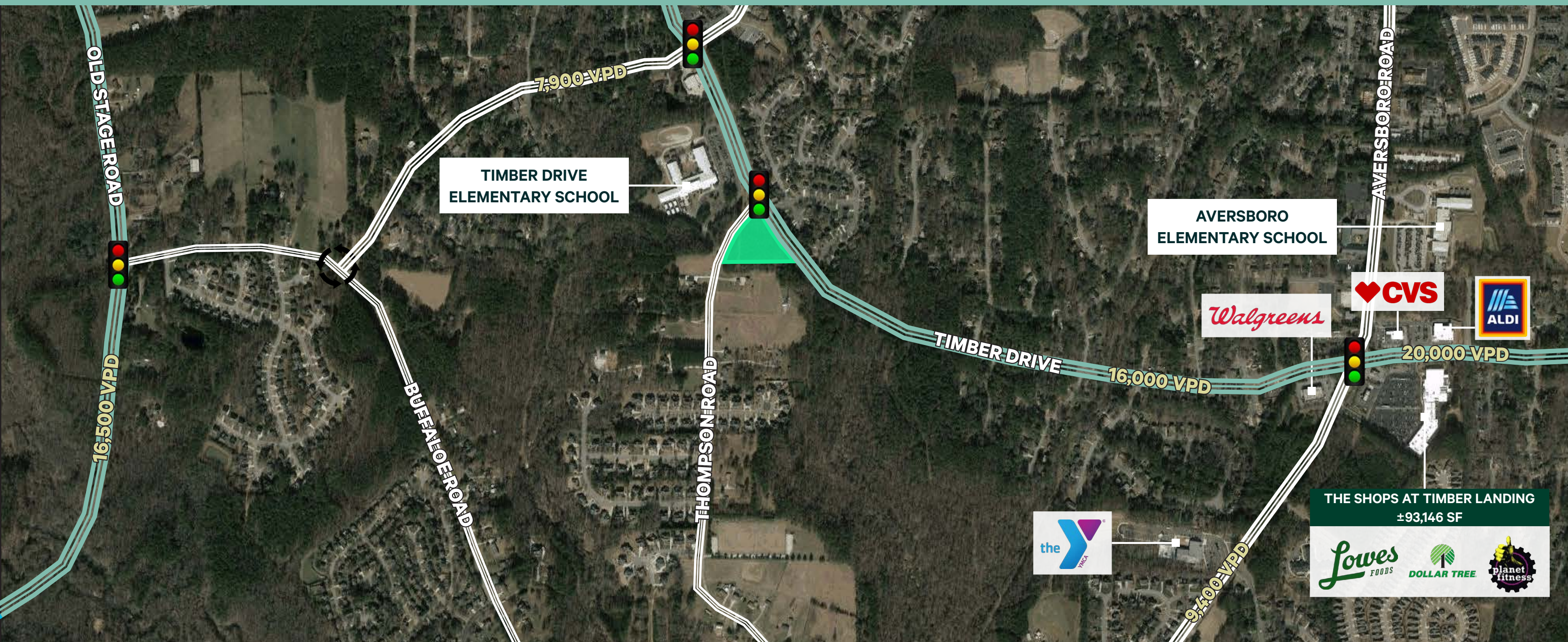


# Timber Drive & Thompson Road

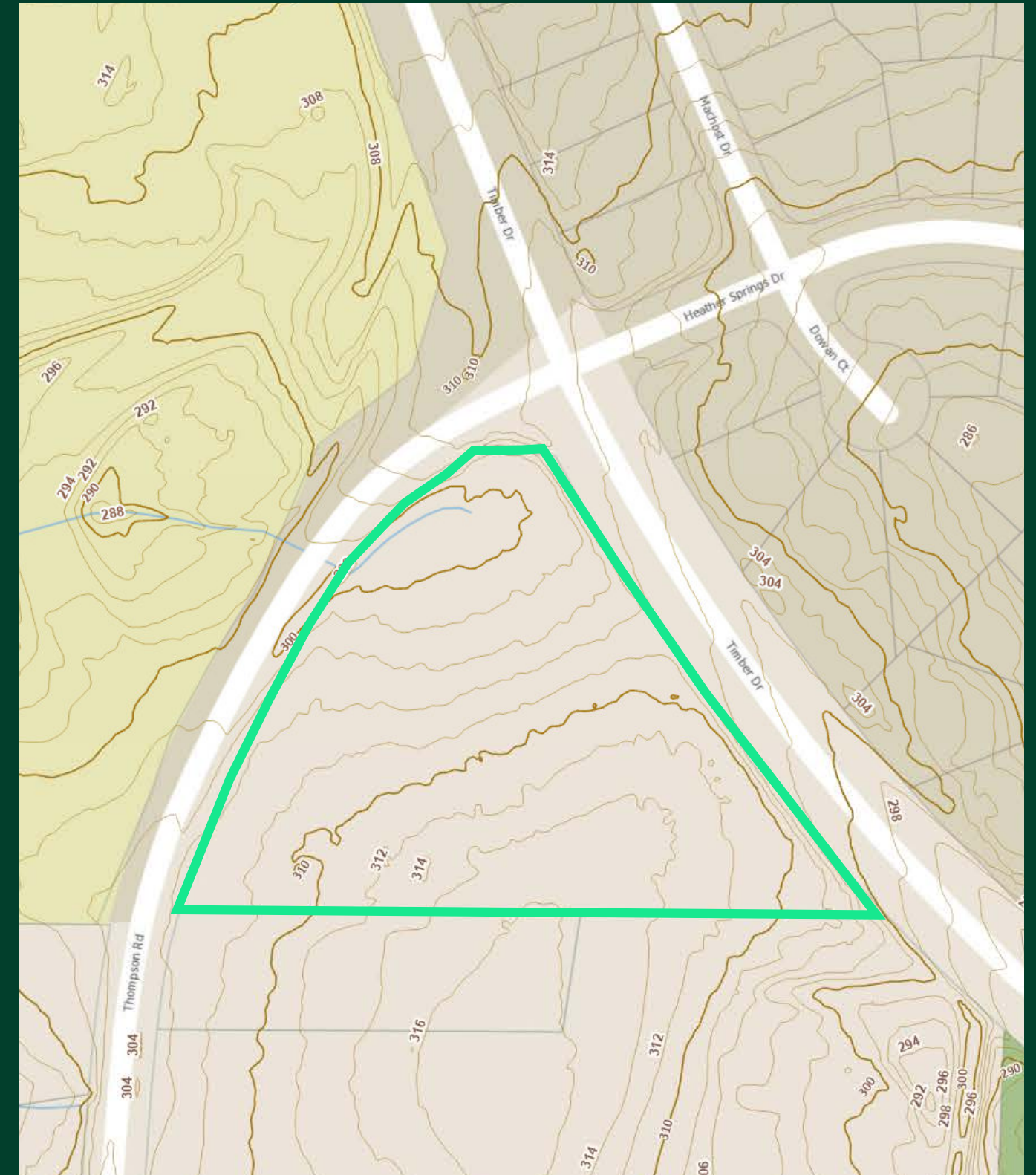
Garner, NC 27529



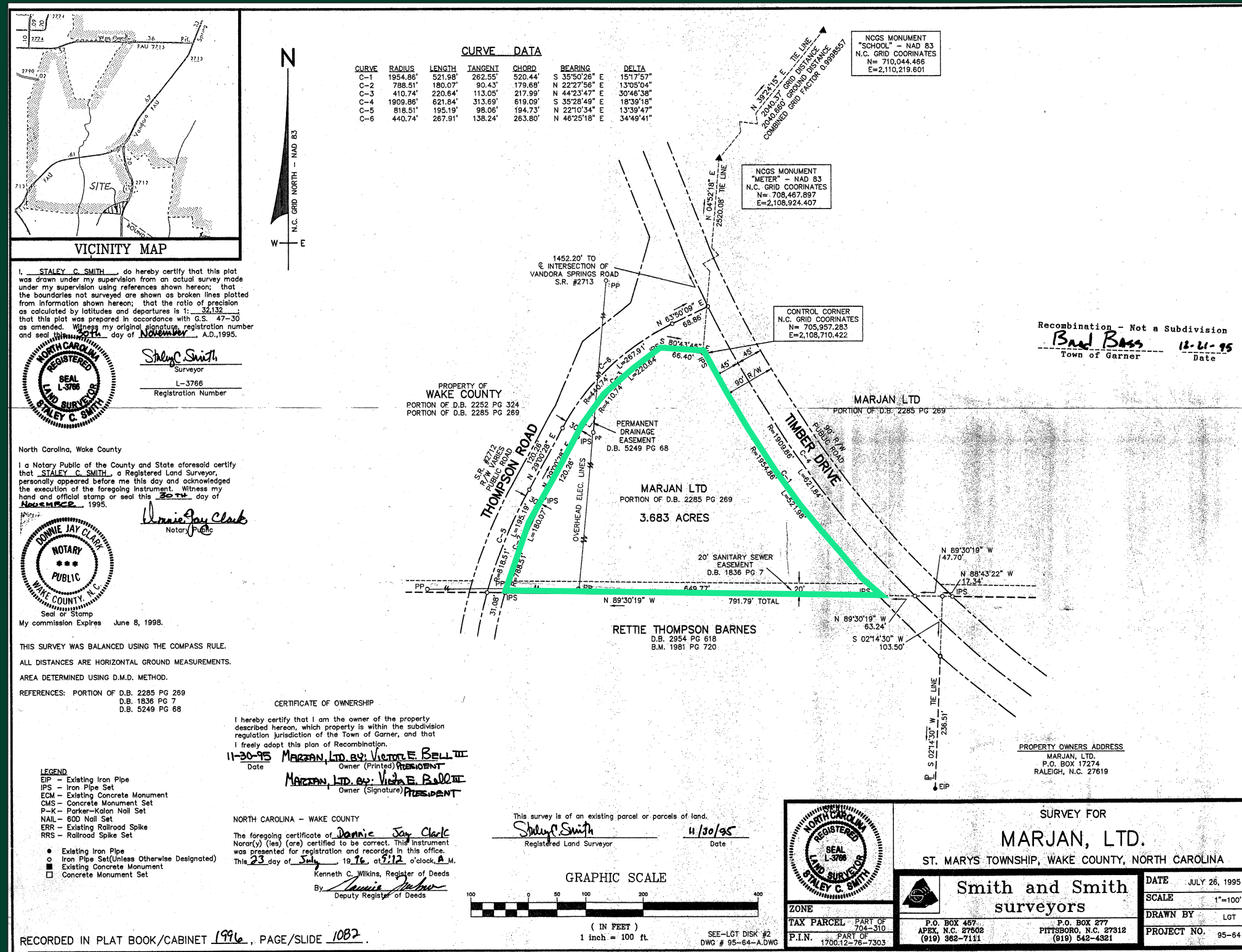
## Property Features

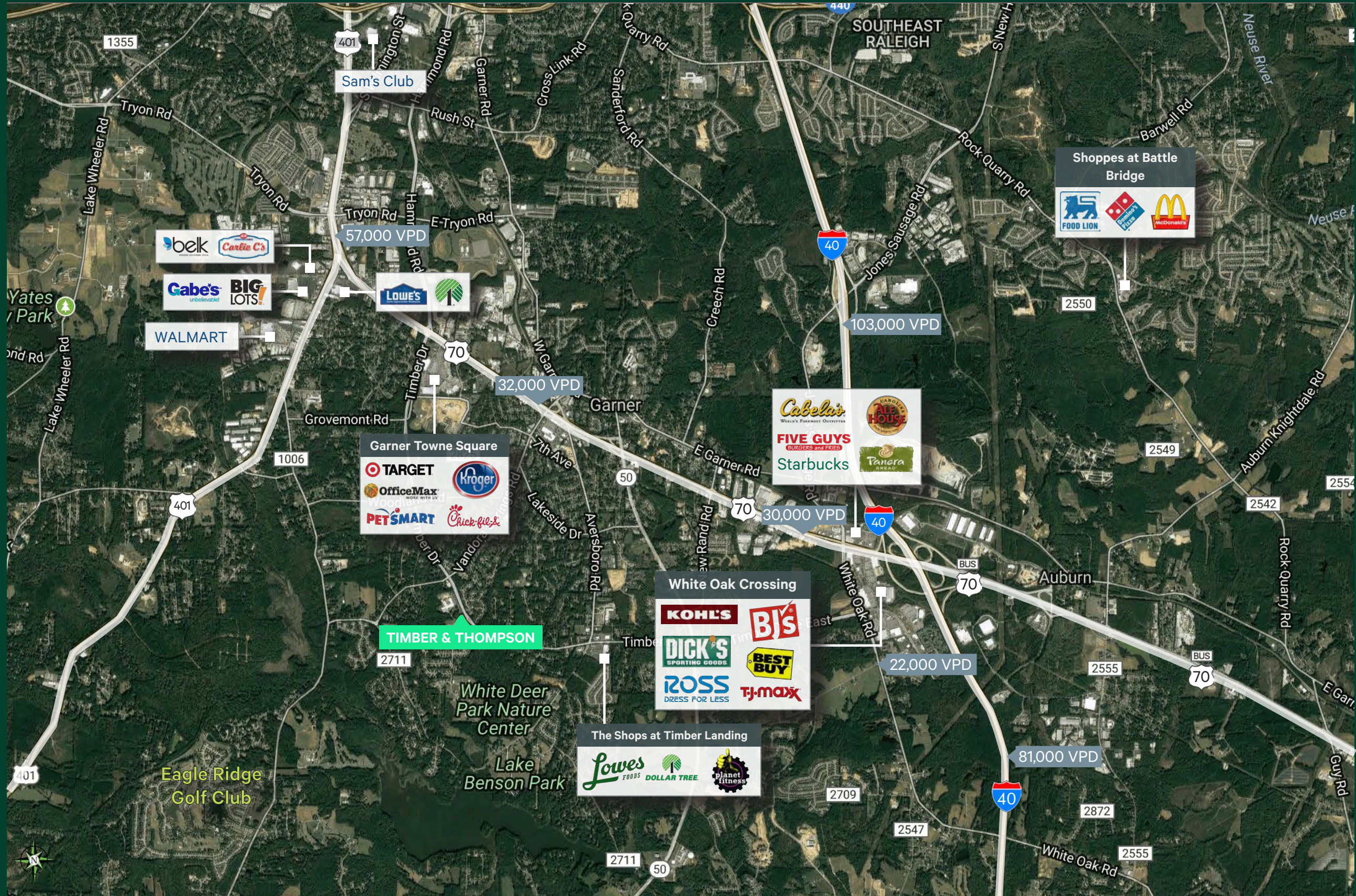
- ± 3.683 acres
- Neighborhood mixed use (NMX)
- Permitted uses include townhomes, schools, restaurants, daycare, professional services, retail sales, medical offices, offices, financial services, veterinarian, etc. For more information on permitted uses, [click here](#)
- Future land use calls for Office Center
- Located in the Residential Thoroughfare Overlay (RTO) district; for more information [click here](#)
- Water and sewer available to serve the property
- Site is located at the corner of Thompson Road & Timber Drive, a signalized intersection. The site has potential right-in, right-out access on Timber Drive and full access on Thompson Road
- PIN# 1700856750
- [Click here](#) for due diligence files
- \$1,443,883 (\$9/SF) sale price

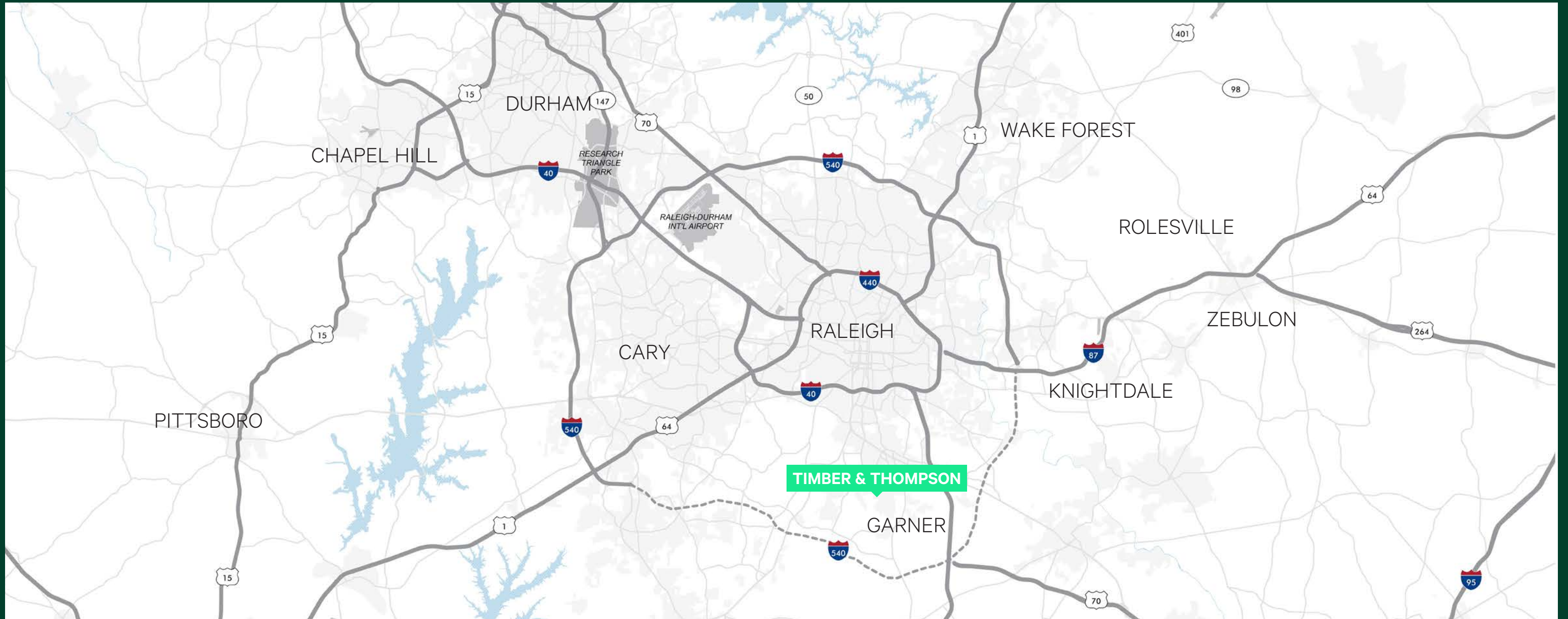
DEMOGRAPHICS	1 MILE	3 MILES	5 MILES
2023 POPULATION	6,308	36,876	95,480
2020-2023 POPULATION GROWTH RATE	0.67%	1.98%	1.98%
2023 AVERAGE HOUSEHOLD INCOME	\$110,295	\$102,643	\$99,187
2028 AVERAGE HOUSEHOLD INCOME	\$128,602	\$120,275	\$116,155
2023 AVERAGE HOME VALUE	\$315,934	\$337,909	\$347,755



# Property Survey







## Contact Us

**Tiffany Hilburn**  
Vice President  
+1 919 831 8238  
tiffany.hilburn@cbre.com

**Harrison Benson**  
Associate  
+1 919 831 8271  
harrison.benson@cbre.com

© 2024 CBRE, Inc. All rights reserved. This information has been obtained from sources believed reliable, but has not been verified for accuracy or completeness. You should conduct a careful, independent investigation of the property and verify all information. Any reliance on this information is solely at your own risk. CBRE and the CBRE logo are service marks of CBRE, Inc. All other marks displayed on this document are the property of their respective owners, and the use of such logos does not imply any affiliation with or endorsement of CBRE. Photos herein are the property of their respective owners. Use of these images without the express written consent of the owner is prohibited.