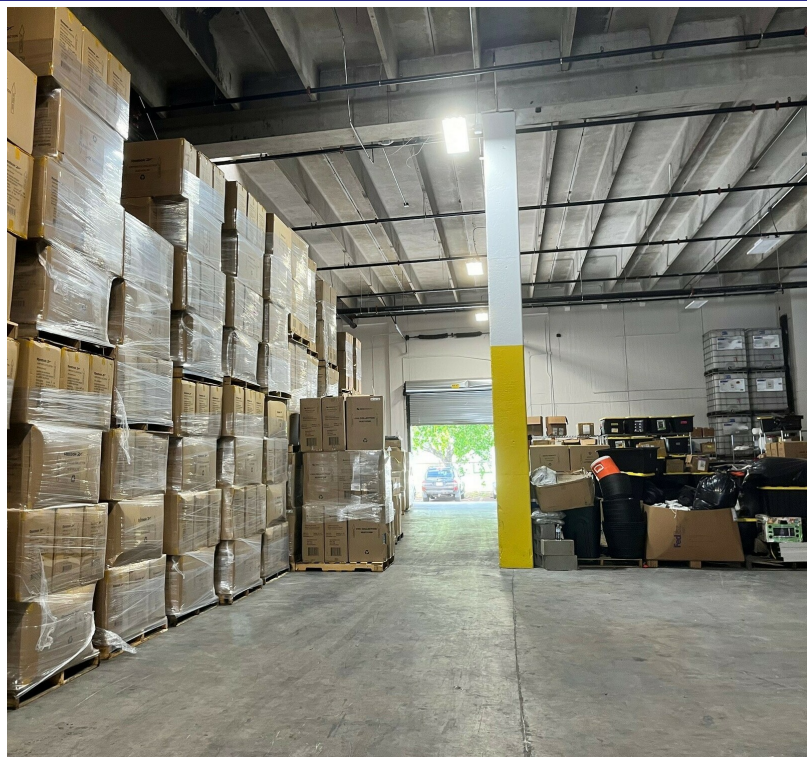


FOR LEASE

4750 NW 15TH AVE SUITE B

4750 NW 15TH AVE, FORT LAUDERDALE, FL 33309

SUITE 5B SUB-LEASE



SPACE HIGHLIGHTS

- Sub-Lease opportunity expires 3-31-2028
- 10,498 SF
- +/- 400 SF air-conditioned office
- 10' x 14' front recessed loading dock
- 10' x 14' rear grade level overhead door with ramp
- 22' ceiling clear
- Fire sprinklers
- Private restroom
- LED lighting
- \$15.60 psf base rent NNN
- CAM is \$4.15 psf



JAN STOLOW

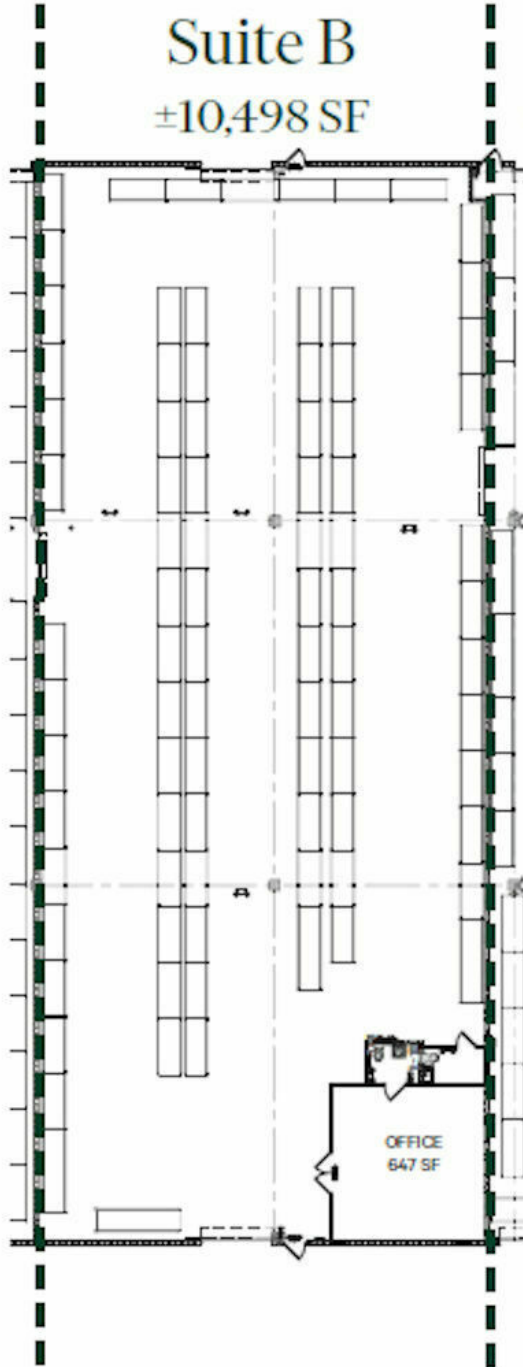
Director of Property Management and Leasing
Direct: 954.491.5505 | Cell: 954.658.4479
jan@levyrai.com



4750 NW 15TH AVE SUITE B

4750 NW 15TH AVE, FORT LAUDERDALE, FL 33309

SUITE B SUB-LEASE FLOOR PLAN



JAN STOLOW

Director of Property Management and Leasing
Direct: 954.491.5505 | Cell: 954.658.4479
jan@levyrai.com

