

438 – 462 E. EDGEWOOD BLVD.
LANSING, MICHIGAN

RETAIL FOR LEASE

1,611 – 23,782 Square Feet Available



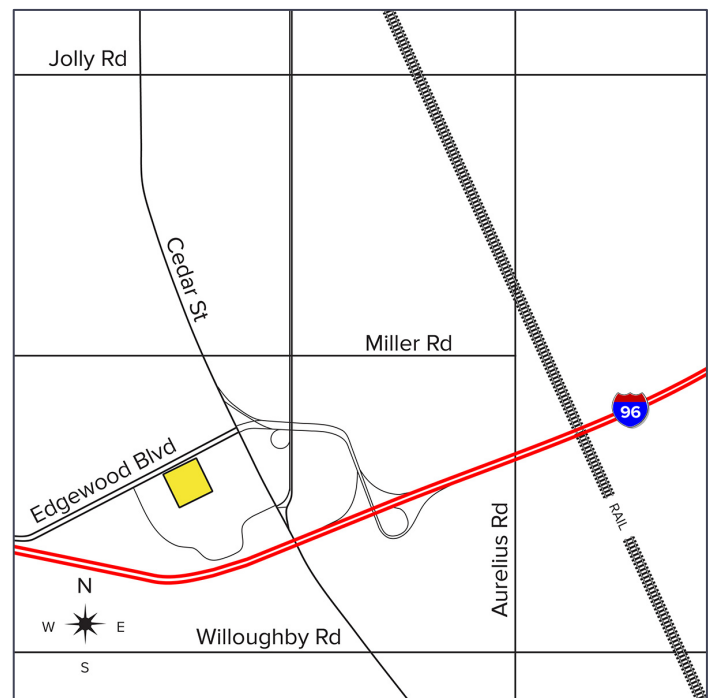
**SIGNATURE
ASSOCIATES**
KNOW SIGNATURE | KNOW RESULTS

EDGEWOOD TOWNE CENTER



PROPERTY FEATURES

- 1,611 – 23,782 square feet available
- Established power center located at I-96 and S. Cedar Street
- Shadow anchored by Target
- Join national retailers in this Towne Center which features a diverse tenant mix, tremendous visibility, and ample on-site parking
- Excellent freeway signage opportunity
- Lease Rate: \$16.00/sq. ft. NNN



For more information, please contact:

JEFF HIGGINS
(248) 359 0650
jhiggins@signatureassociates.com

RICHARD PIFER
(248) 799 3158
rpifer@signatureassociates.com

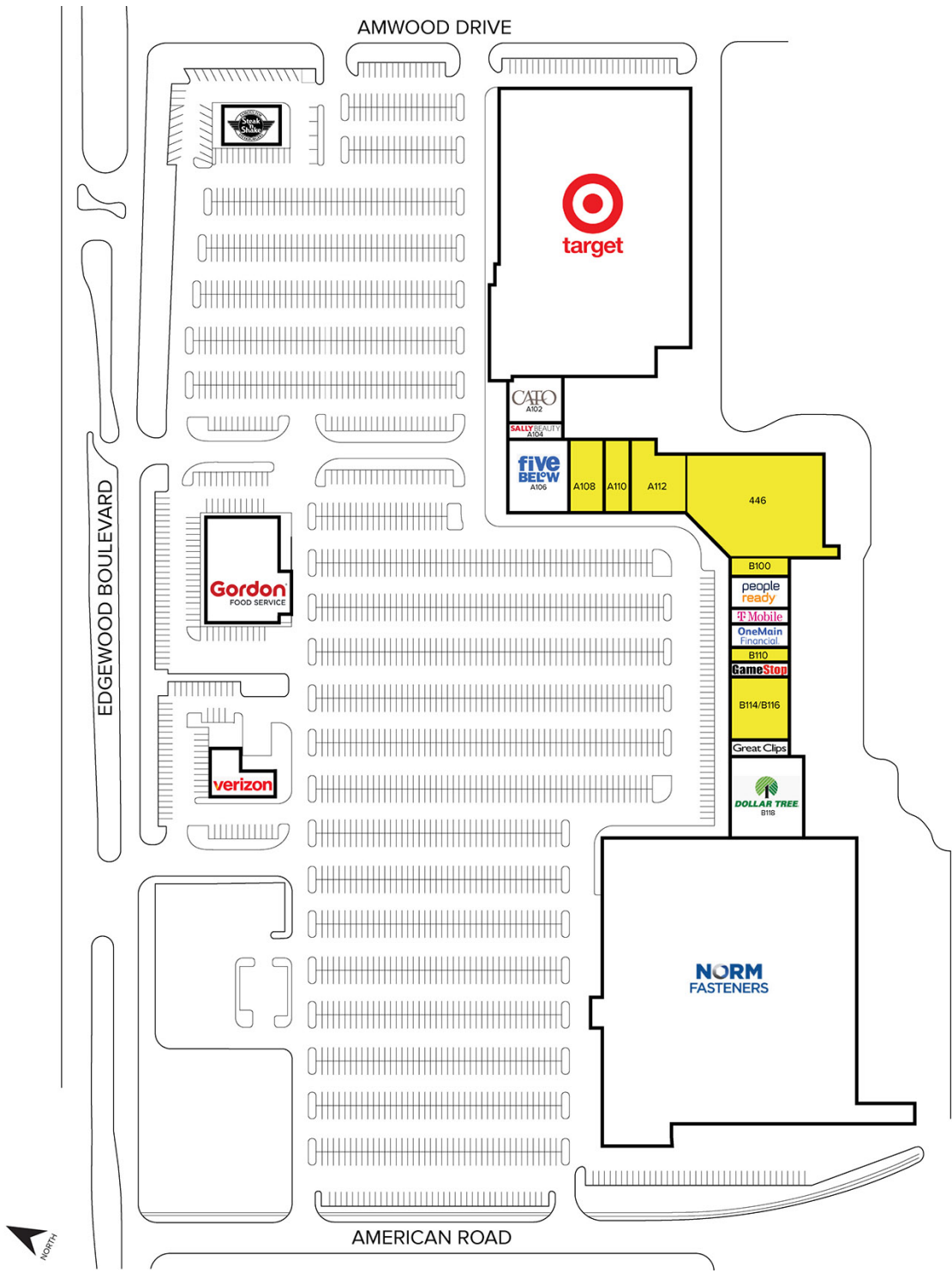
SIGNATURE ASSOCIATES
One Towne Square, Suite 1200
Southfield, MI 48076
www.signatureassociates.com

438 – 462 E. Edgewood Blvd. – Lansing, Michigan

Retail For Lease

1,611 – 23,782
Square Feet
AVAILABLE

Site Plan



For more information, please contact:

JEFF HIGGINS
(248) 359 0650
jhiggins@signatureassociates.com

RICHARD PIFER
(248) 799 3158
rpifer@signatureassociates.com

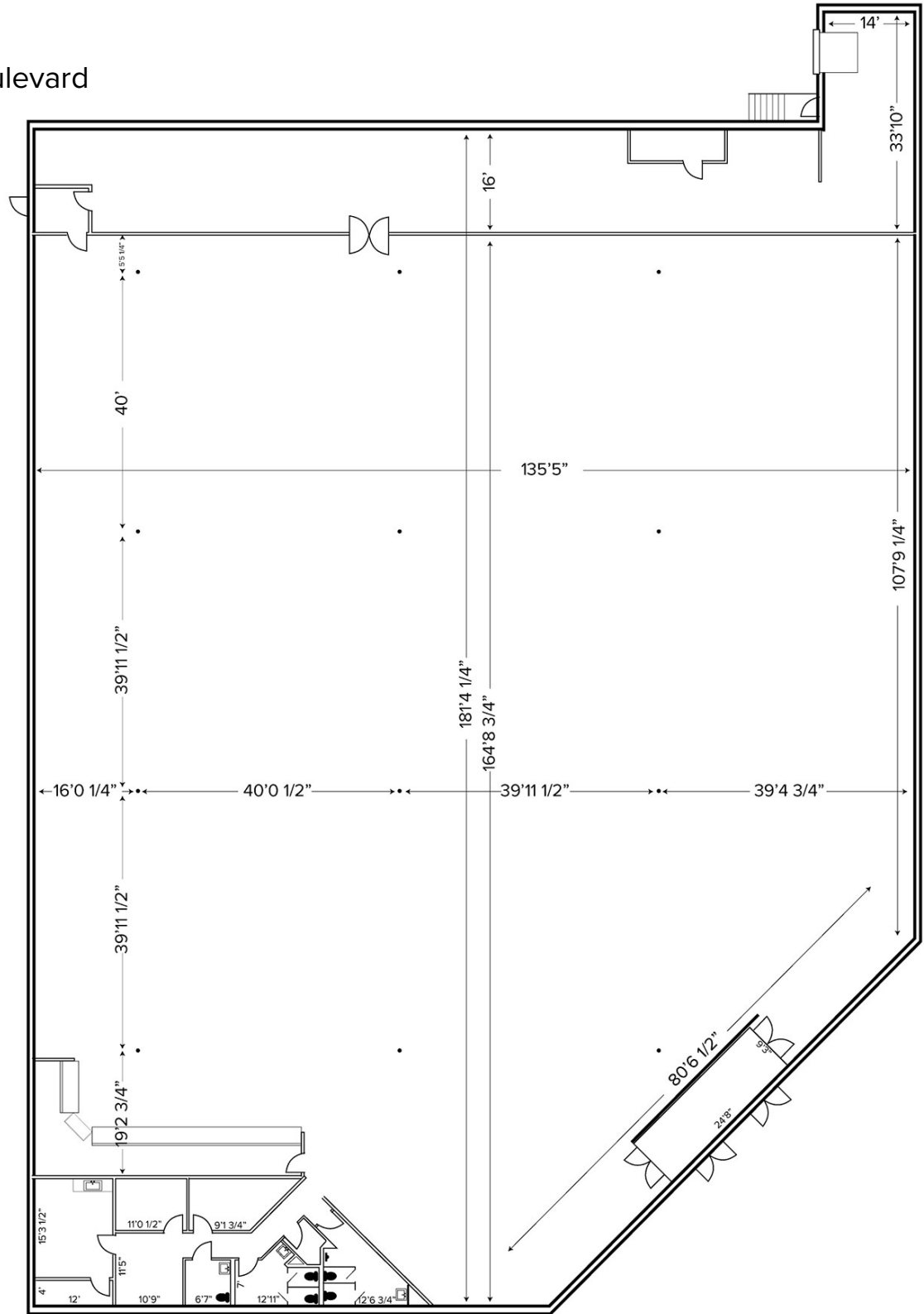
SIGNATURE ASSOCIATES
One Towne Square, Suite 1200
Southfield, MI 48076
www.signatureassociates.com

438 – 462 E. Edgewood Blvd. – Lansing, Michigan

Retail For Lease

1,611 – 23,782
Square Feet
AVAILABLE

Floor Plan
446 Edgewood Boulevard



For more information, please contact:

JEFF HIGGINS
(248) 359 0650
jhiggins@signatureassociates.com

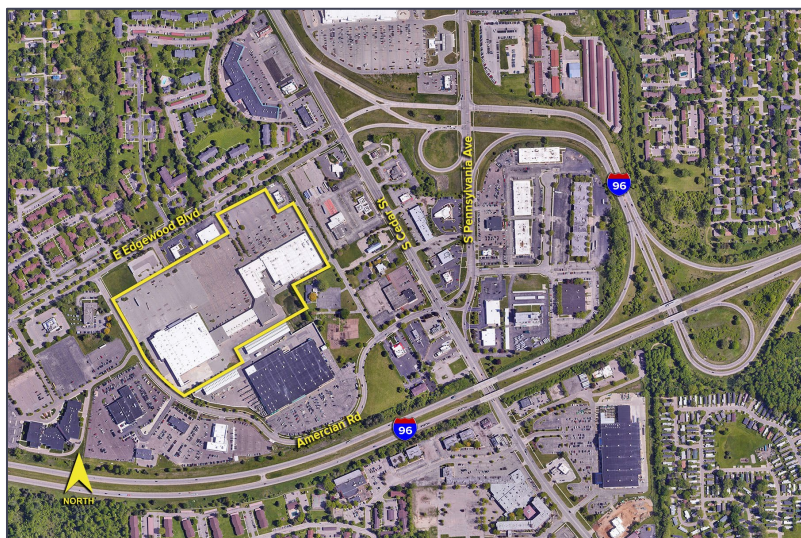
RICHARD PIFER
(248) 799 3158
rpifer@signatureassociates.com

SIGNATURE ASSOCIATES
One Towne Square, Suite 1200
Southfield, MI 48076
www.signatureassociates.com

438 – 462 E. Edgewood Blvd. – Lansing, Michigan

Retail For Lease

1,611 – 23,782
Square Feet
AVAILABLE



DEMOGRAPHICS

	POPULATION	MED. HH INCOME
1 MILE	8,925	\$52,889
3 MILE	64,824	\$64,304
5 MILE	116,132	\$64,294

TRAFFIC COUNTS (TWO-WAY)

8,972	Edgewood Blvd. W of Cedar St.
13,773	Cedar St. S of Edgewood Blvd.
13,894	Cedar St. N of Edgewood Blvd.
54,013	I-96 & Cedar St.



For more information, please contact:

JEFF HIGGINS
(248) 359 0650
jhiggins@signatureassociates.com

RICHARD PIFER
(248) 799 3158
rpifer@signatureassociates.com

SIGNATURE ASSOCIATES
One Towne Square, Suite 1200
Southfield, MI 48076
www.signatureassociates.com