

ROY FREESTANDING MEDICAL BUILDING

FOR LEASE



PROPERTY DETAILS

5640 S. 3500 W., Roy, UT 84067

For Lease: \$24.00/SF NNN

- 4,200 SF available
- 11 clinical rooms (all plumbed)
- Large reception
- X-ray room
- Procedure room
- Large nursing station with plumbing
- 225 amp; 3-phase power
- Patient and staff restrooms
- One (1) staff shower
- 25 parking stalls (5.7:1,000 SF)
- Building crown signage available

2025 DEMOS



EST. POPULATION

1 MILE » 13,837
3 MILE » 91,042
5 MILE » 163,154



EST. HOUSEHOLDS

1 MILE » 4,467
3 MILE » 30,047
5 MILE » 54,148



EST. AVERAGE HH INCOME

1 MILE » \$117,565
3 MILE » \$119,820
5 MILE » \$121,037

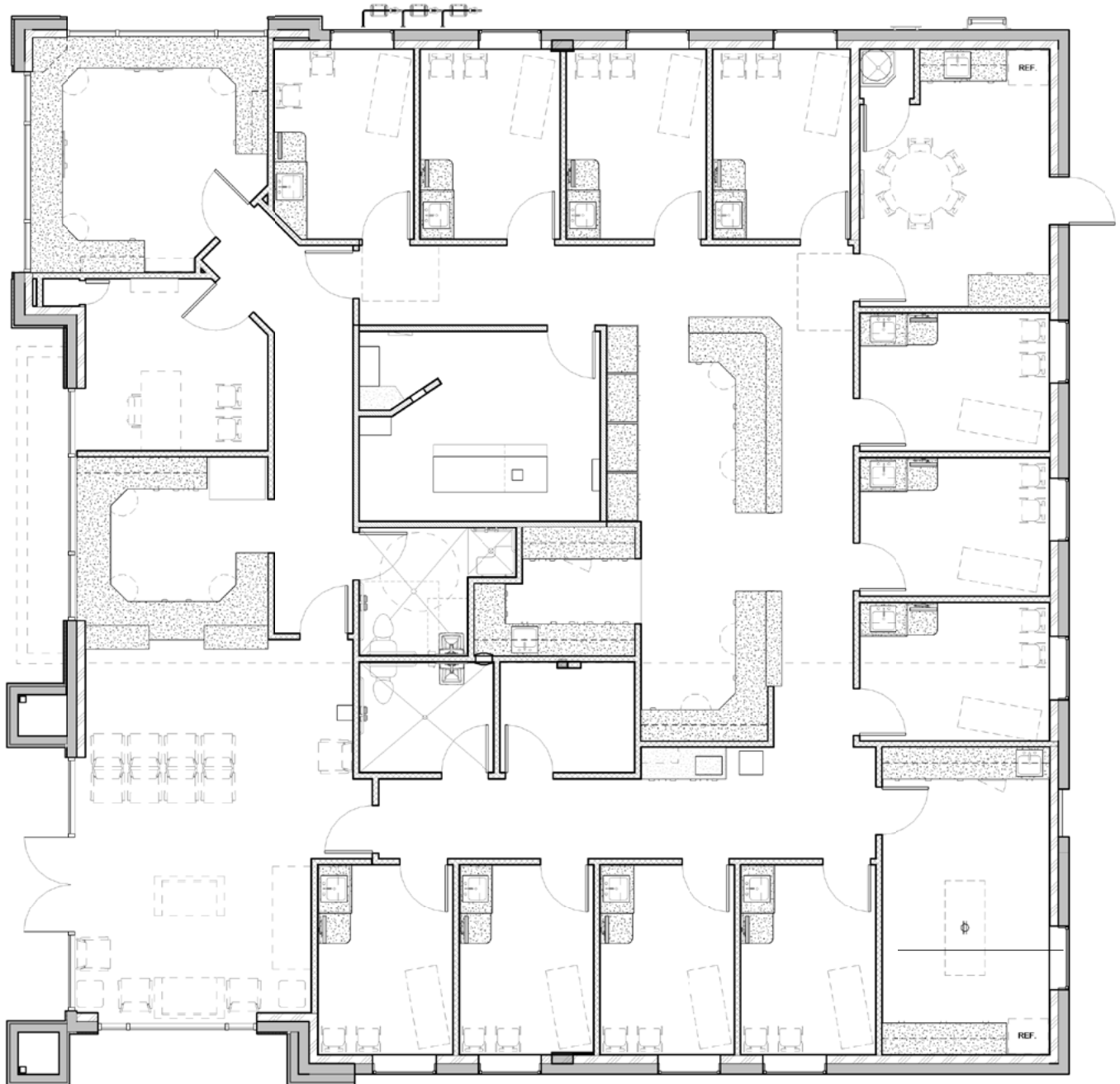


ADAM HAWKES
ahawkes@newmarkmw.com
direct 801.416.1034
[View Profile](#)

CHRIS FALK, CCIM, SIOR
cfalk@newmarkmw.com
direct 801.499.6514
[View Profile](#)

**FULL SERVICE
COMMERCIAL REAL ESTATE**
1410 S University Park Blvd, Ste 120
Clearfield, Utah 84015
Office 801.578.5580
www.newmarkmw.com

ROY FREESTANDING MEDICAL BUILDING



ADAM HAWKES
ahawkes@newmarkmw.com
direct 801.416.1034
[View Profile](#)

CHRIS FALK, CCIM, SIOR
cfalk@newmarkmw.com
direct 801.499.6514
[View Profile](#)

**FULL SERVICE
COMMERCIAL REAL ESTATE**
1410 S University Park Blvd, Ste 120
Clearfield, Utah 84015
Office 801.578.5580
www.newmarkmw.com



ADAM HAWKES
 ahawkes@newmarkmw.com
 direct 801.416.1034
[View Profile](#)

CHRIS FALK, CCIM, SIOR
 cfalk@newmarkmw.com
 direct 801.499.6514
[View Profile](#)

**FULL SERVICE
 COMMERCIAL REAL ESTATE**
 1410 S University Park Blvd, Ste 120
 Clearfield, Utah 84015
 Office 801.578.5580
www.newmarkmw.com