

SHOEMAKER LOFTS



It's the last great loft building in Chicago. Introducing The Shoemaker Lofts, the conversion of the landmark Florsheim Shoe Factory in Avondale. Own a piece of Chicago history with these authentic, affordable concrete loft homes boasting character and distinction. From the beautifully restored terra cotta facade and rustic interior brick, to soaring 11-foot ceilings and huge expanses of vintage-style windows, The Shoemaker Lofts is classic loft living!

Choose from an incredible variety of floor plans offering upscale urban finishes, including hardwood flooring, granite kitchen countertops and a stainless steel appliance package. Enjoy building amenities including a secure lobby with doorman, heated garage parking, on-site fitness and business centers, and a rooftop deck with breathtaking skyline views. Old meets new. Classic architecture and new mechanical systems, including electrical, plumbing, heating, air conditioning and elevators. It's all taking place right here in Avondale, one of the city's hottest up-and-coming neighbourhoods. The Shoemaker Lofts puts you near quality public parks and retail stores, within a mile of the Kennedy Expressway and close to public transportation. It's the last great loft building in Chicago. Don't let it pass you by.

INVEST IN LIVING.

Features & Amenities

INTERIOR

- Hardwood flooring in kitchen, living room, foyer and hallway
- Luxury carpet and pad in bedrooms and dens
- Double pane insulated windows with screens
- Satin-nickel finish lever-style door hardware
- Coated wire ventilated shelves in closets
- Stylish slab profile stained wood doors
- White painted trim & door casings throughout
- 11' ceilings

KITCHEN

- Aristokraft designer hickory cabinets
- Granite countertops in a variety of designer colors
- Kitchen island (standard or optional per plan)
- Whirlpool designer stainless steel appliances.
 - Self-clean gas range
 - 20-cubic-foot top-mount refrigerator
 - 4-cycle quiet-wash dishwasher
 - Built-in microwave/hood fan combination
- Water line for ice-maker
- Stainless steel double bowl sink
- Moen cathedral spout chrome faucet with side spray hose

BATHROOMS

- 6' luxury soaking tub or walk-in shower (per plan)
- Designer ceramic tile flooring
- Designer ceramic tile tub surround and/or shower enclosure
- Aristokraft designer hickory vanity cabinet.
- Cultured marble vanity tops with integral bowl sinks
- Moen polished chrome faucets

GENERAL

- Intercom-accessed security lobby with doorman
- Fitness center
- Business center
- Meeting/community room
- Rooftop outdoor deck with gas grill
- Private storage locker available
- Heated garage parking available
- Loft style concrete ceilings, exposed electrical and air ducts
- Balconies or terraces (per plan)
- Washer/dryer hook-ups in all homes
- Pre-wired for cable television (RG6) and telephone (CAT5) in bedrooms, living rooms, kitchens, dens and tech centers (per plan)
- Individual gas-forced-air heat with central air conditioning
- Humidifier

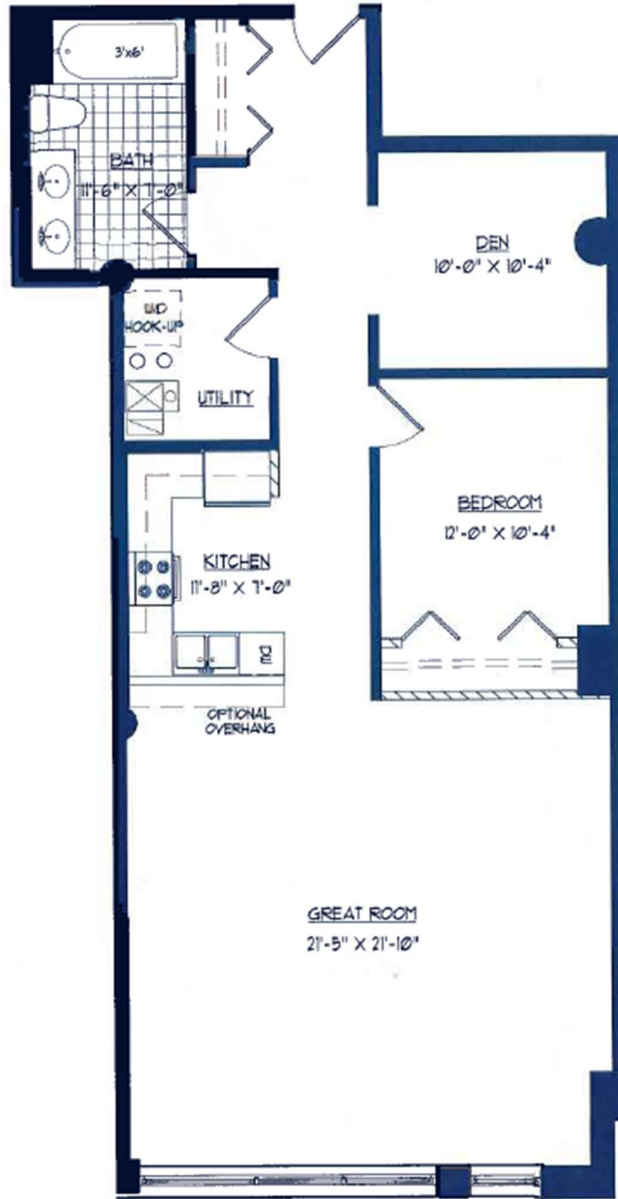
The Dubin Guru Group's policy of continual attention to design and construction requires that all specifications, features, designs, materials, availability, terms and prices are subject to change without notice. Room dimensions are approximate and may vary depending on residence selected. Depicted floor plans and architectural renderings are only an artist's impression.

SHOEMAKER LOFTS

Units Floor Plans

1. Unit 117 -SF 1200

Shoemaker Unit 1B+D, 1BA



FLOORPLAN K

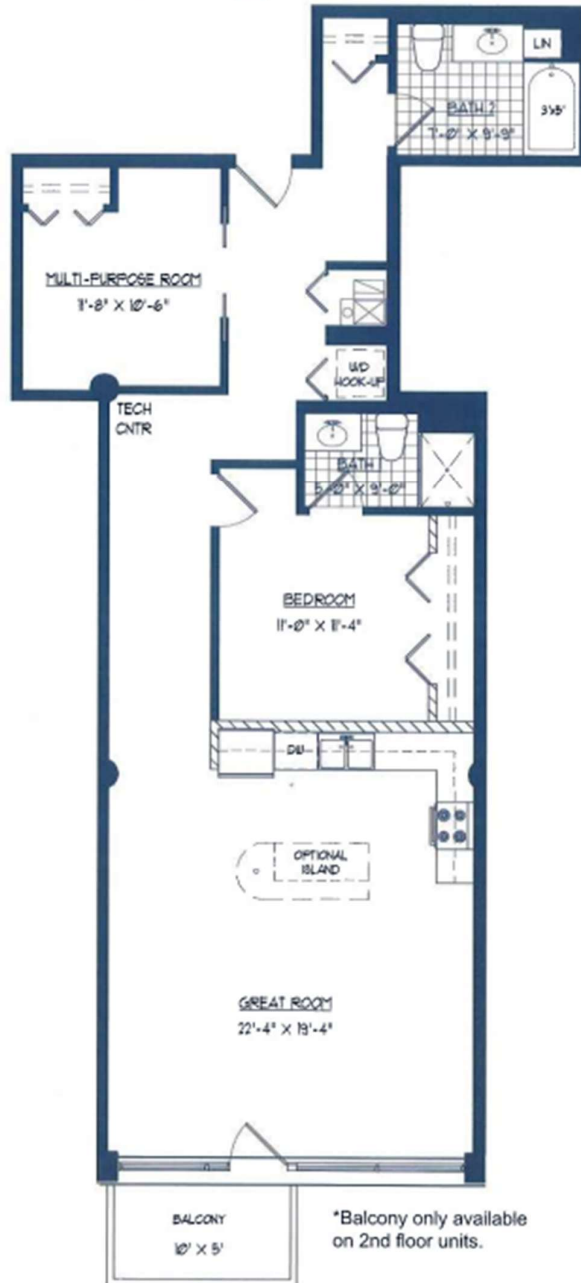
1B+D, 1BA
1,200 sq. ft.
UNIT: (117)

SHOEMAKER LOFTS

2. Unit 120 -SF 1195

Shoemaker Unit 1B+D, 2BA

the
SHOEMAKERLOFTS



FLOORPLAN J

1B+D, 2BA

1,195 sq. ft.

UNITS: 118. 119. 120. 121. 122. 123

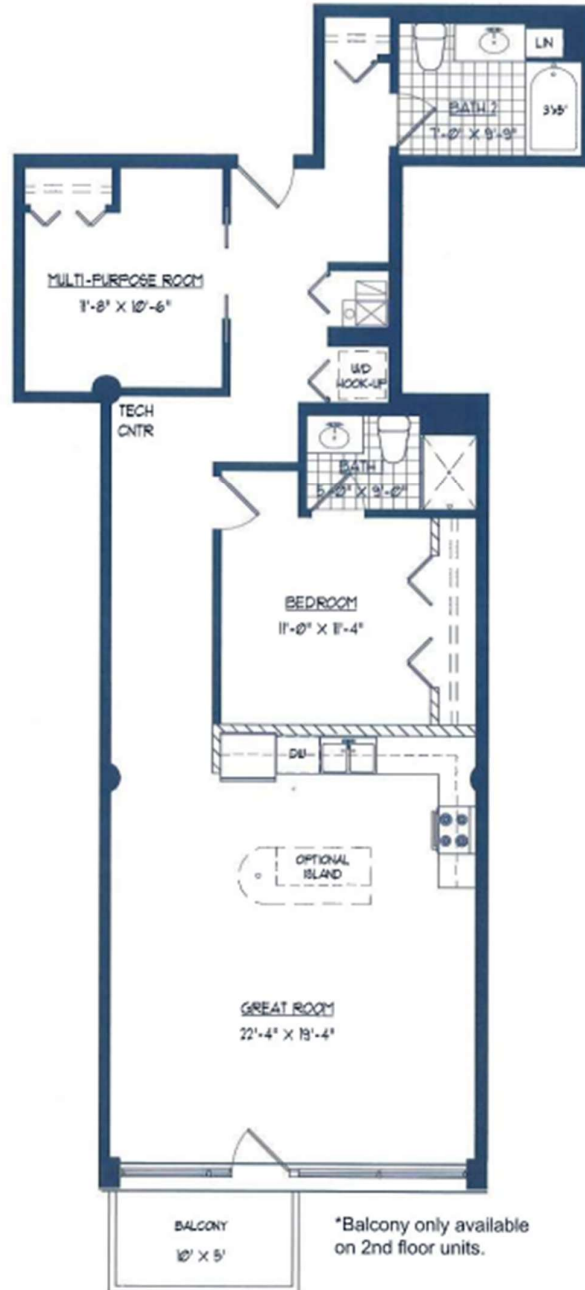


SHOEMAKER LOFTS

3. Unit 123 -SF 1195

Shoemaker Unit 1B+D, 2BA

the
SHOEMAKERLOFTS



FLOORPLAN J

1B+D, 2BA

1,195 sq. ft.

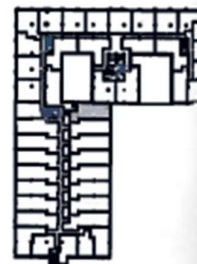
UNITS: 118. 119. 120 121 122 123



SHOEMAKER LOFTS

4. Unit 217 -SF 1110

Shoemaker Unit 2B, 1BA



FLOORPLAN Z

2B, 1BA

1,110 sq. ft.

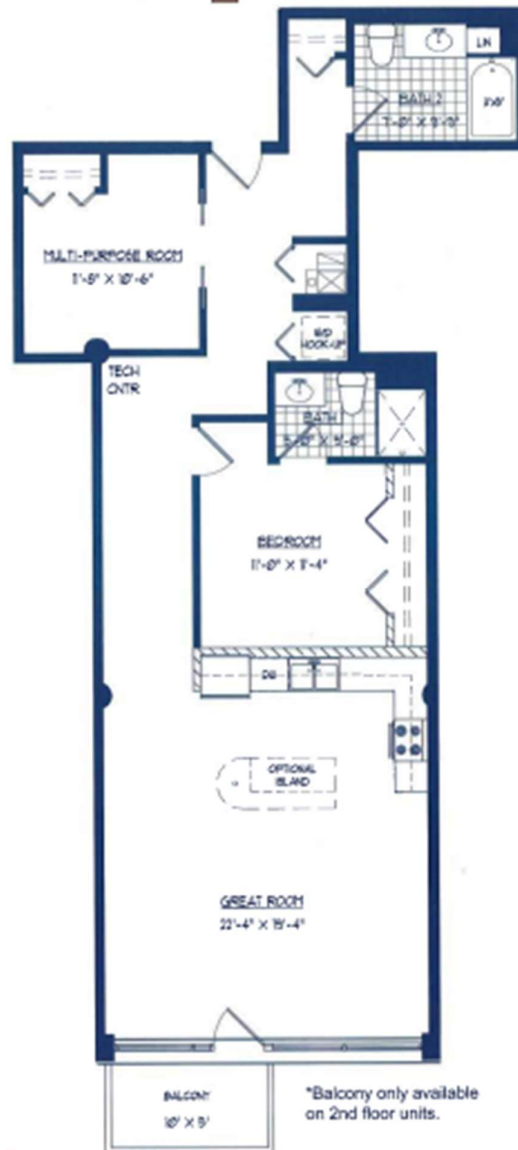
UNITS: 217, 317

SHOEMAKER LOFTS

5. Unit 222 -SF 1195

Shoemaker Unit 1B+D, 2BA

the
SHOEMAKERLOFTS



FLOORPLAN J

1B+D, 2BA

1,195 sq. ft.

UNITS: 118, 119, 120, 121, 122, 123

218, 219, 220, 221, 222, 223

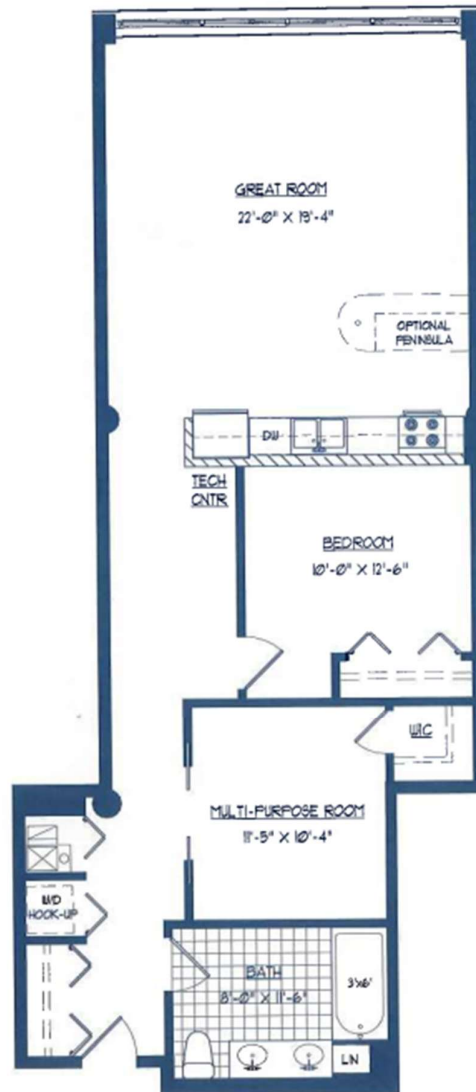


SHOEMAKER LOFTS

6. Unit 230 -SF 1120

Shoemaker Unit 1B+D, 1BA

the
SHOEMAKERLOFTS



FLOORPLAN I

1B+D, 1BA

1,120 sq. ft.

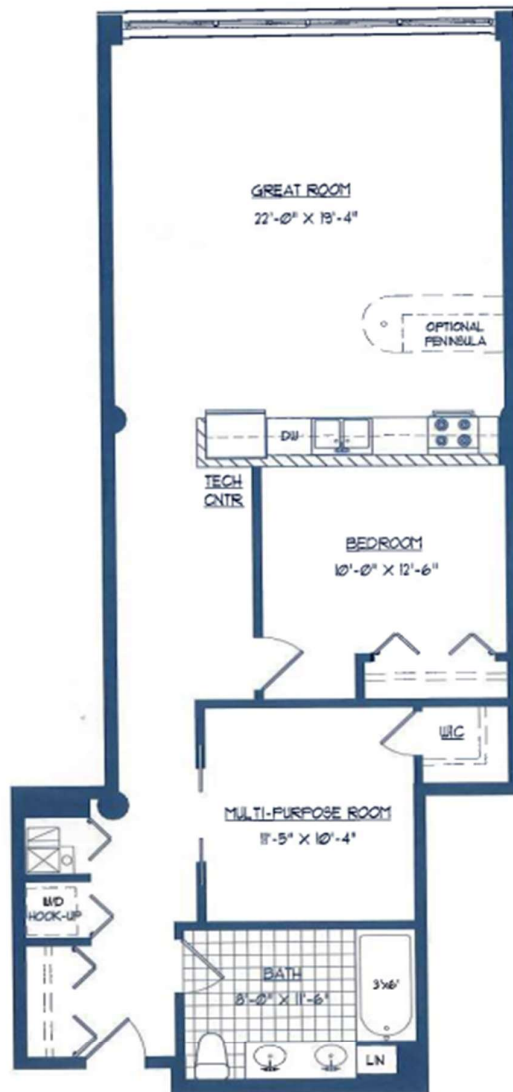
UNITS: 130, 131, 132, 133, 134, 135, 136,
230, 231, 232, 233, 234, 235, 236

SHOEMAKER LOFTS

7. Unit 232 -SF 1120

Shoemaker Unit 1B+D, 1BA

the
SHOEMAKERLOFTS



FLOORPLAN I

1B+D, 1BA

1,120 sq. ft.

UNITS: 130, 131, 132, 133, 134, 135, 136,
230 231 232 233 234 235 236

SHOEMAKER LOFTS

8. Unit 317 -SF 1110

Shoemaker Unit 2B, 1BA



FLOORPLAN Z

2B, 1BA

1,110 sq. ft.

UNITS: 217, **317**

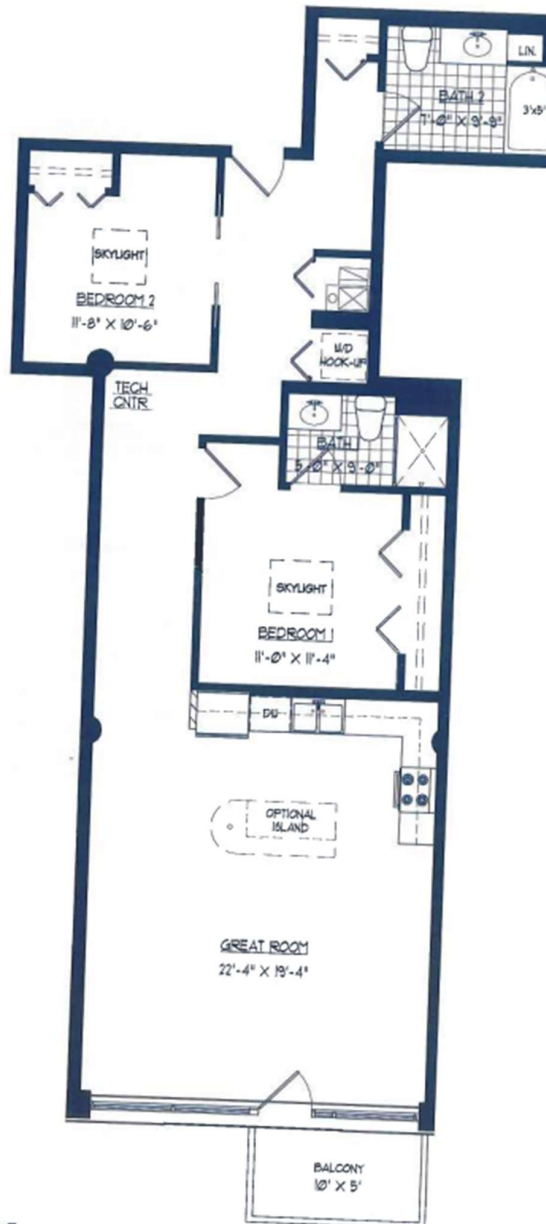


SHOEMAKER LOFTS

9. Unit 322 -SF 1195

Shoemaker Unit 2B, 2BA

the
SHOEMAKERLOFTS



FLOORPLAN F1

2B, 2BA

1,195 sq. ft.

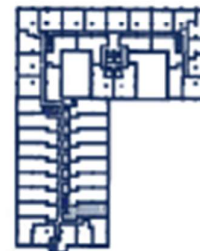
UNITS: 318, 319, 320, 321, **322**, 323

SHOEMAKER LOFTS

10. Unit 324 -SF 1275

Shoemaker Unit 2B, 2BA

the
SHOEMAKERLOFTS



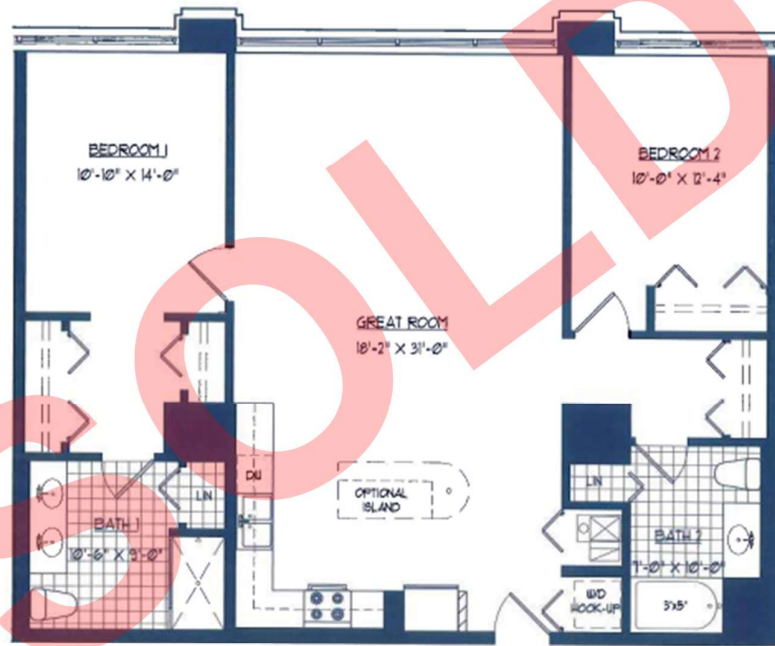
FLOORPLAN I1

2B, 2BA
1,275 sq. ft.
UNIT: 324

SHOEMAKER LOFTS

11. Unit 522 -SF 1290

Shoemaker Unit 2B, 2BA



FLOORPLAN K1

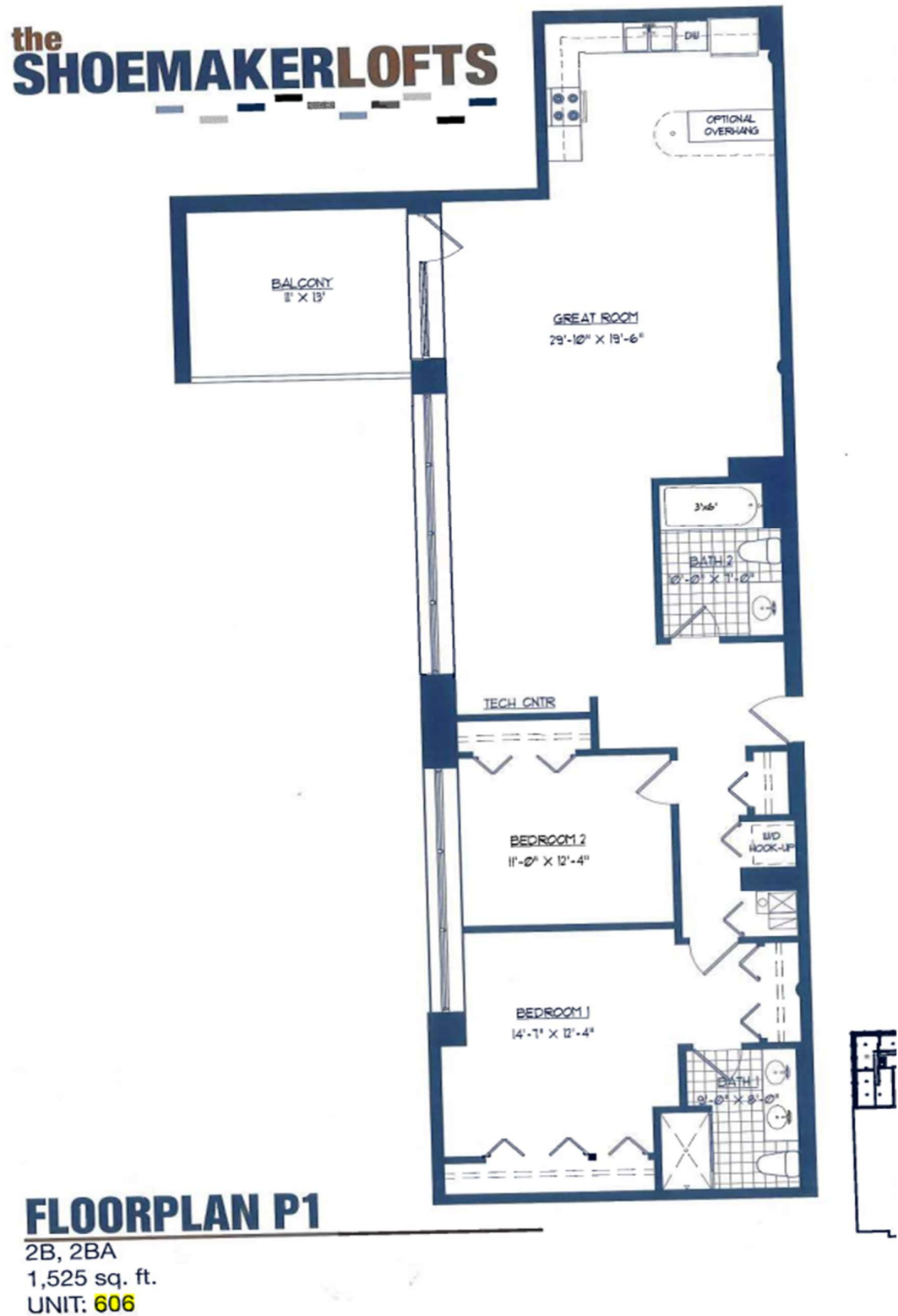
2B, 2BA
1,290 sq. ft.
UNIT: **522**



SHOEMAKER LOFTS

12. Unit 606 -SF 1525

Shoemaker Unit 2B, 2BA

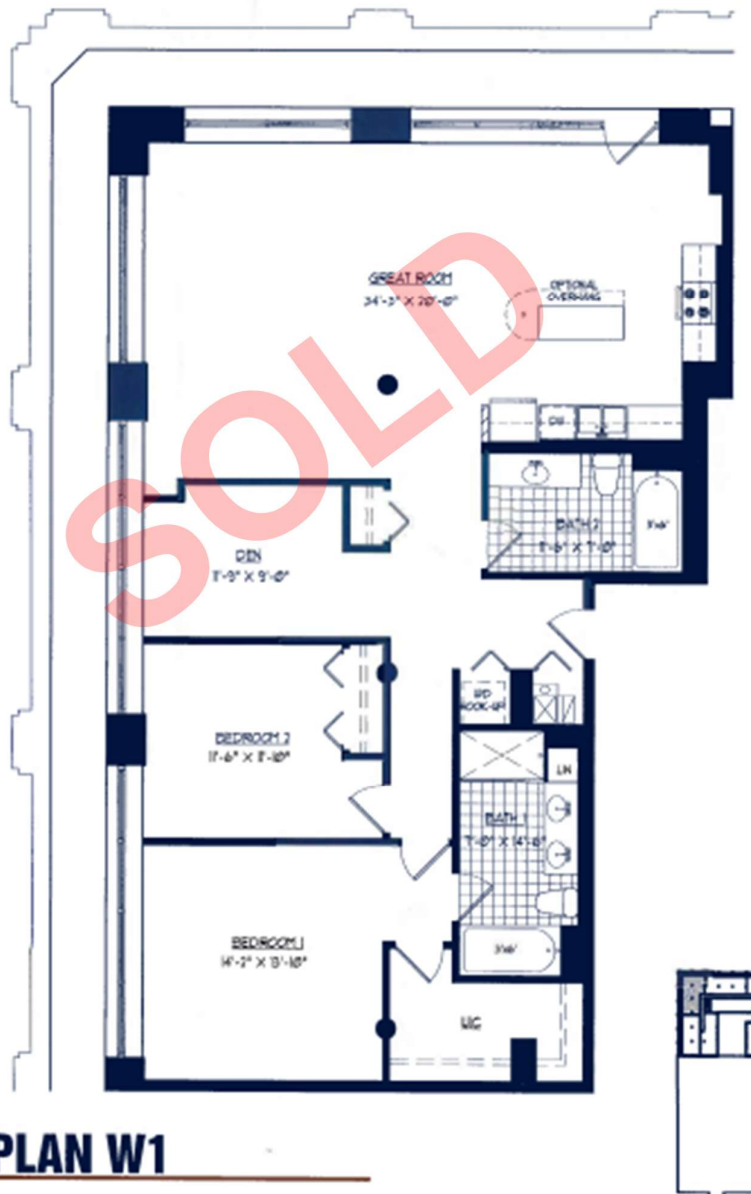


SHOEMAKER LOFTS

13. Unit 612 -SF 1745

Shoemaker Unit 2B+D, 2BA

the
SHOEMAKERLOFTS



FLOORPLAN W1

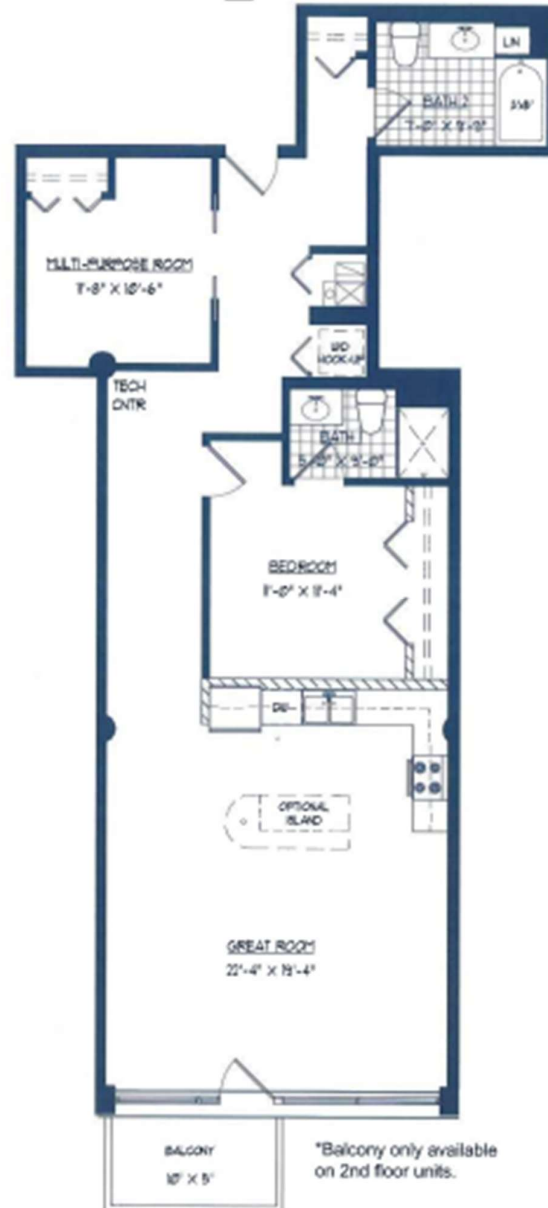
2B+D, 2BA
1,745 sq. ft.
UNIT: 612

SHOEMAKER LOFTS

14. Unit 118 -SF 1195

Belmont Unit 1B_D, 2BA

the
SHOEMAKERLOFTS



FLOORPLAN J

1B+D, 2BA

1,195 sq. ft.

UNITS: **118** 119 120 121 122 123

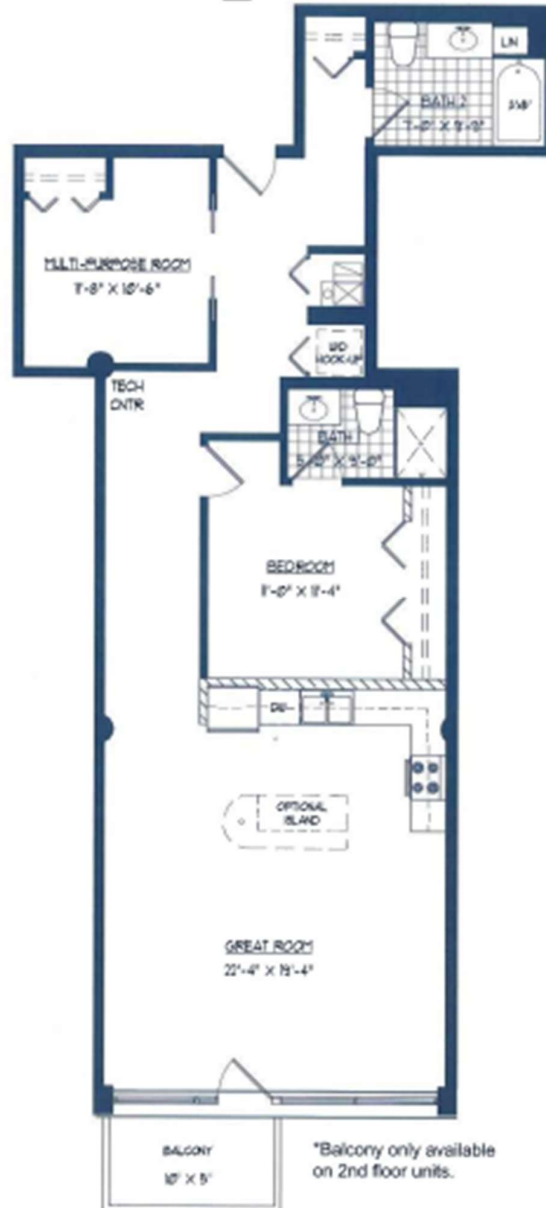


SHOEMAKER LOFTS

15. Unit 121 - SF 1195

Belmont Unit 1B+D, 2BA

the SHOEMAKERLOFTS



FLOORPLAN J

1B+D, 2BA

1,195 sq. ft.

UNITS: **118** 119 120 121 122 123

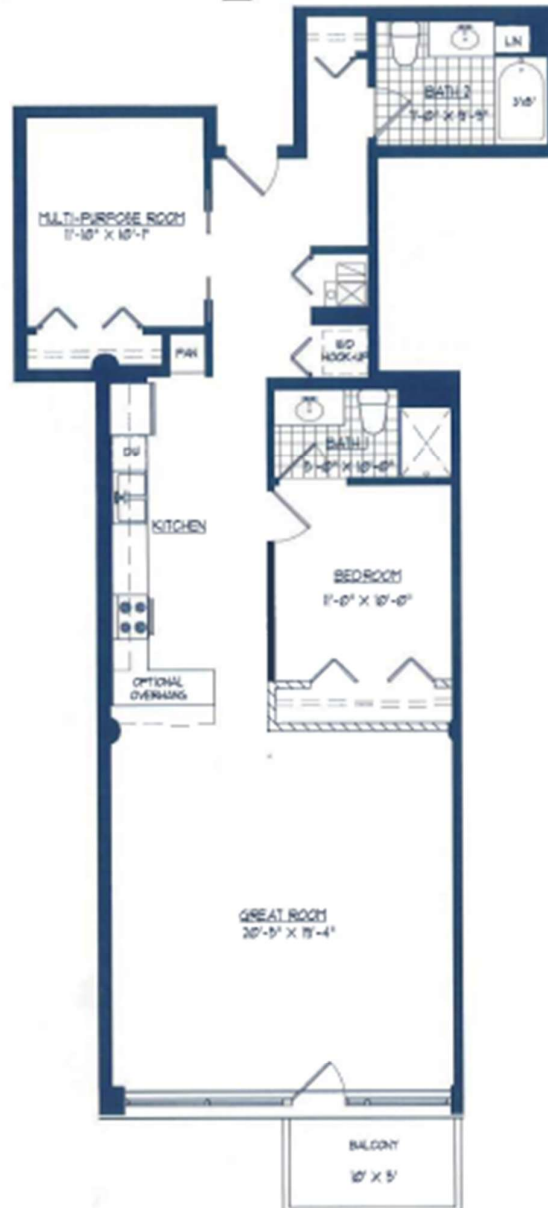


SHOEMAKER LOFTS

16. Unit 124 - SF 1275

Belmont Unit 1B+D, 2BA

the SHOEMAKERLOFTS



FLOORPLAN L

1B+D, 2BA
1,275 sq. ft.
UNITS: 124, 224

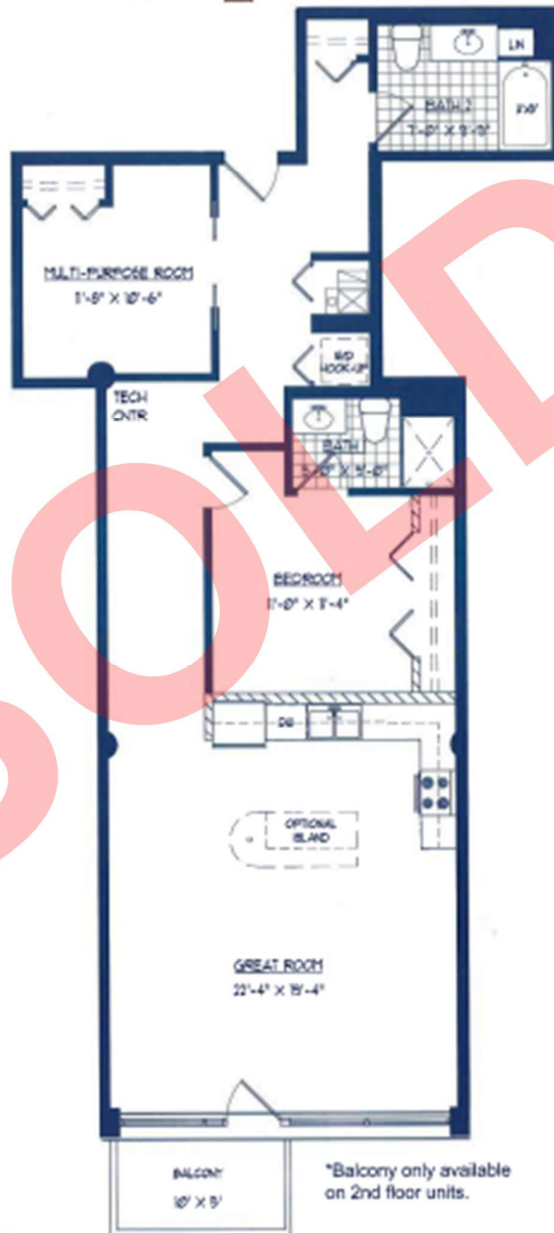


SHOEMAKER LOFTS

17. Unit 220 - SF 1195

Belmont Unit 1B+D, 2BA

the
SHOEMAKERLOFTS



*Balcony only available
on 2nd floor units.

FLOORPLAN J

1B+D, 2BA

1,195 sq. ft.

UNITS: 118, 119, 120, 121, 122, 123,
218, 219, 220, 221, 222, 223

SHOEMAKER LOFTS

18. Unit 224 - SF 1275

Belmont Unit 1B+D, 2BA

the SHOEMAKERLOFTS



FLOORPLAN L

1B+D, 2BA

1,275 sq. ft.

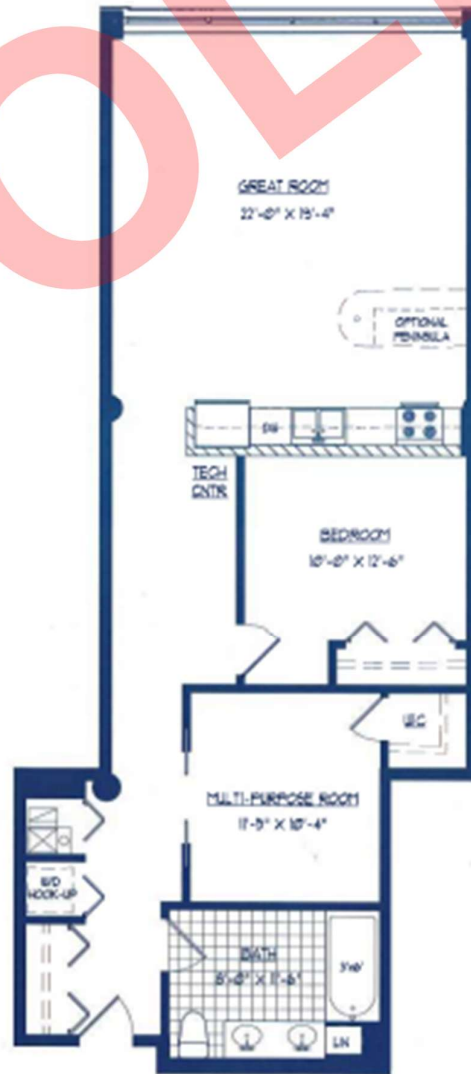
UNITS: 124, 224

SHOEMAKER LOFTS

19. Unit 231 - SF 1120

Belmont Unit 1B+D, 1BA

the
SHOEMAKERLOFTS



FLOORPLAN I

1B+D, 1BA

1,120 sq. ft.

UNITS: 130, 131, 132, 133, 134, 135, 136,

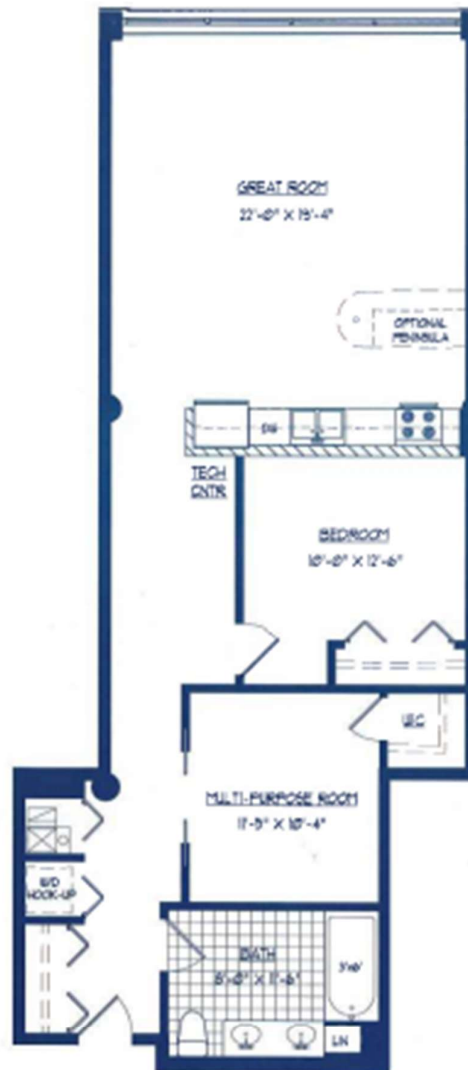
230, 231, 232, 233, 234, 235, 236

SHOEMAKER LOFTS

20. Unit 233 - SF 1120

Belmont Unit 1B+D, 1BA

the
SHOEMAKERLOFTS



FLOORPLAN I

1B+D, 1BA

1,120 sq. ft.

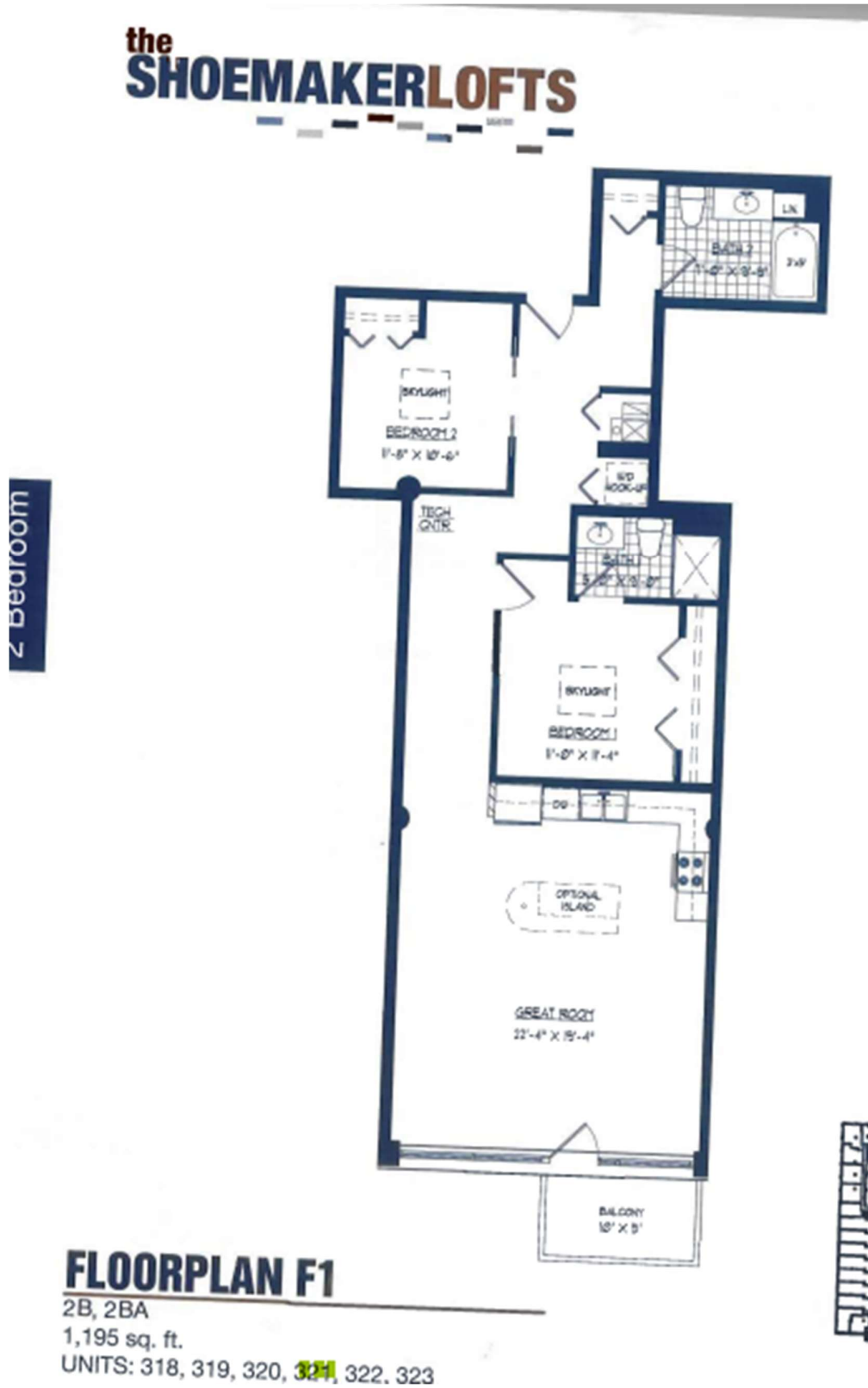
UNITS: 130, 131, 132, 133, 134, 135, 136,

230, 231, 232, 233, 234, 235, 236

SHOEMAKER LOFTS

21. Unit 321 - SF 1195

Belmont Unit 2B, 2BA



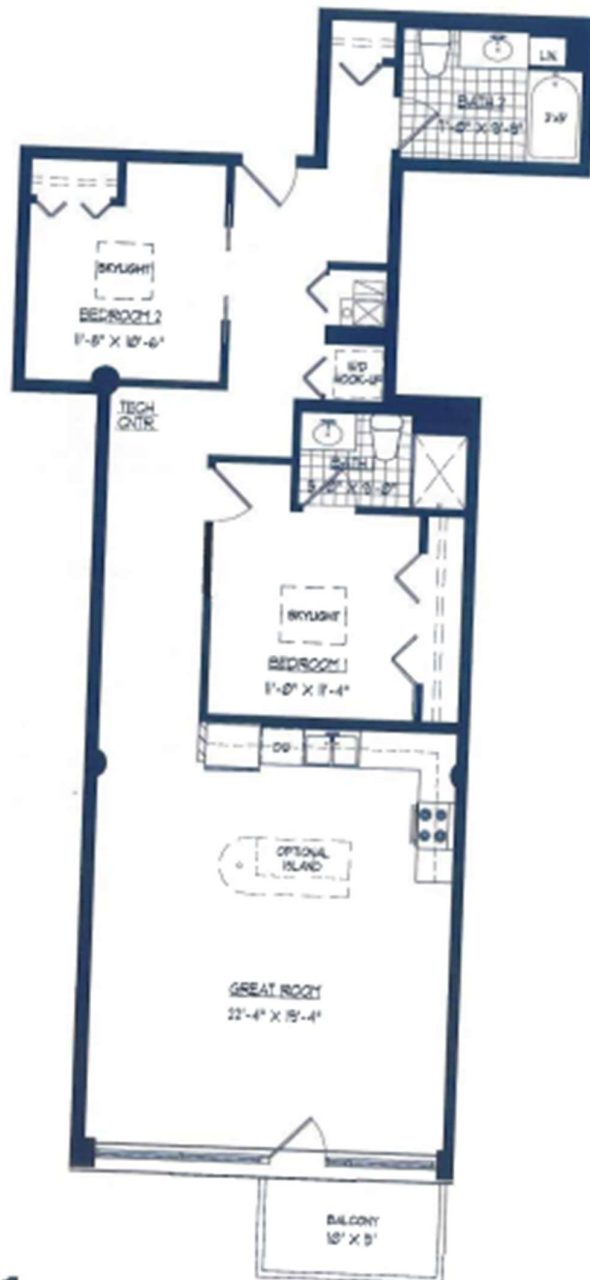
SHOEMAKER LOFTS

22. Unit 323 - SF 1195

Belmont Unit 2B, 2BA

the
SHOEMAKERLOFTS

2 Bedroom



FLOORPLAN F1

2B, 2BA

1,195 sq. ft.

UNITS: 318, 319, 320, 321, 322, 323

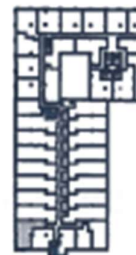
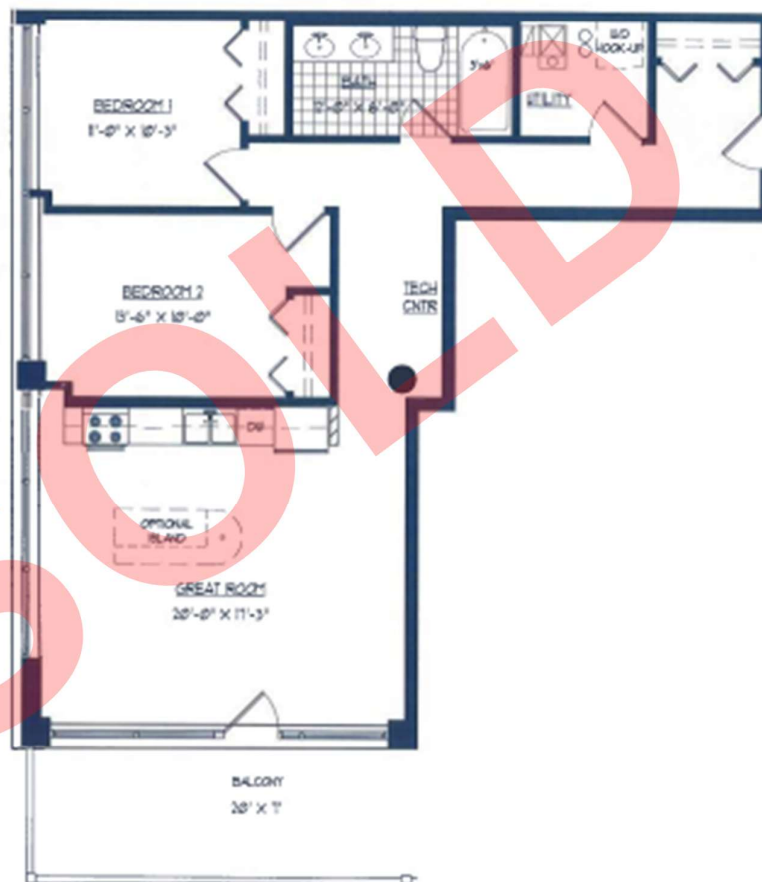


SHOEMAKER LOFTS

23. Unit 329 - SF 1050

Belmont Unit 2B, 1BA

the
SHOEMAKERLOFTS



FLOORPLAN V

2B, 1BA

1,050 sq. ft.

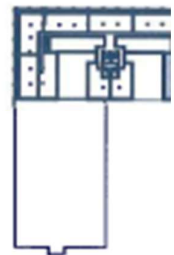
UNITS: 129, 229, **329**

SHOEMAKER LOFTS

24. Unit 605 - SF 1490

Belmont Unit 2B, 2BA

the
SHOEMAKERLOFTS



FLOORPLAN 01

2B, 2BA
1,490 sq. ft.
UNIT: **605**

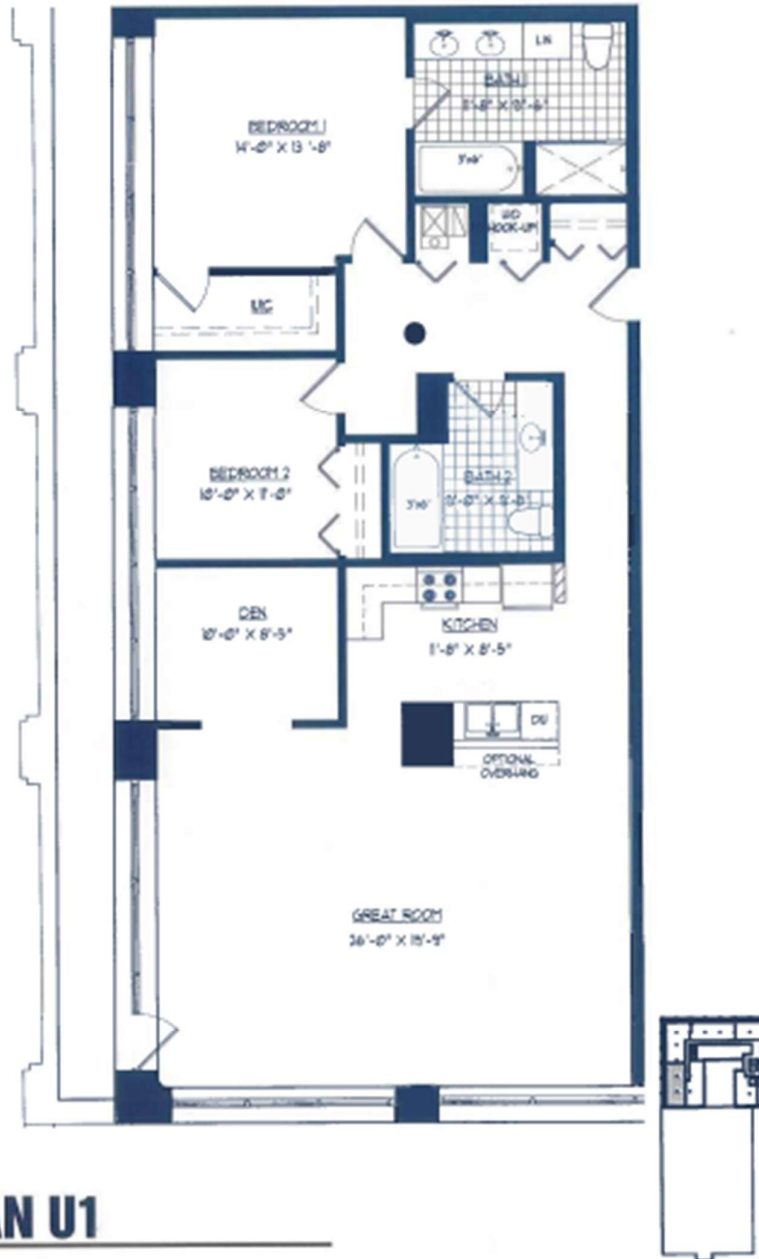
SHOEMAKER LOFTS

25. Unit 611 - SF 1630

Belmont Unit 2B+D, 2BA

the
SHOEMAKERLOFTS

2 Bedroom + Den



FLOORPLAN U1

2B+D, 2BA
1,630 sq. ft.
UNIT: 611

SHOEMAKER LOFTS

Photos



SHOEMAKER LOFTS



SHOEMAKER LOFTS



SHOEMAKER LOFTS

