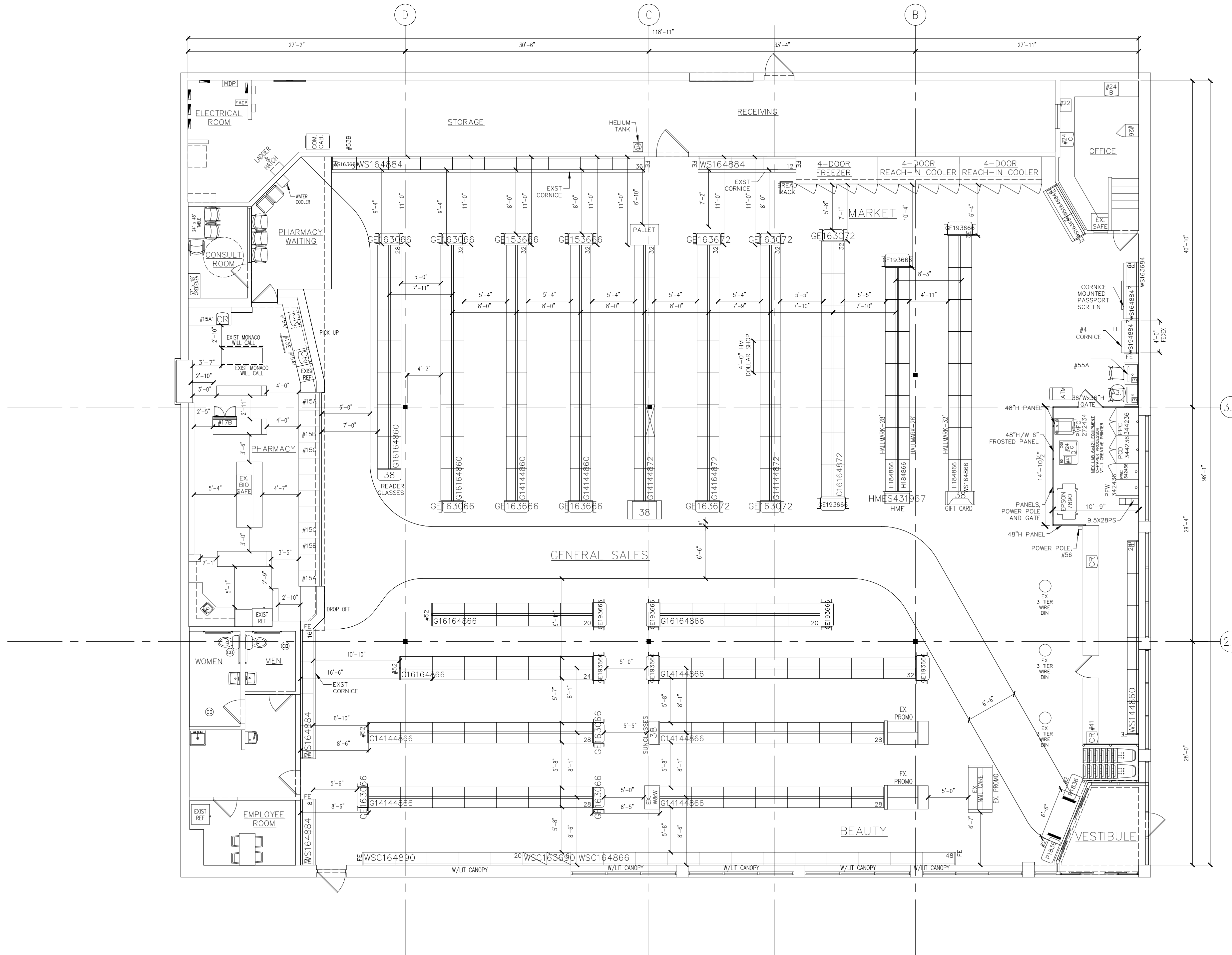


1 FIXTURE FLOOR PLAN
1/8" = 1'-0"



GENERAL NOTES

- GENERAL SALES AREA:
 1. PROVIDE PROPER A.D.A. CLEARANCES ON BOTH SIDES OF ALL DOORS
 2. WATER PALLET
 3. (NOT USED)
 4. NON-LIT WHITE EXTRUDED CORNICE, HEIGHT TO MATCH EXISTING CORNICE
 5-12. (NOT USED)
PHARMACY DEPARTMENT
 13-14. (NOT USED)
 15. COMPUTER TERMINAL
 15A: INTERCOM PLUS TERMINAL
 15A1: INTERCOM PLUS TERMINAL, KVM ENABLE
 15B: RX THERMAL PRINTER
 15C: RX SCALE
 15D: (NOT USED)
 15E: PVM MONITOR
 16. (NOT USED)
 17. CII SAFE
 A: (2) 2 DOOR SAFE
 B: (1) 2 DOOR SAFE
 18-19. (NOT USED)
OFFICE:
 20. (NOT USED)
 21. (NOT USED)
 22. PRINTER
 23. (NOT USED)
 24. OFFICE COMPUTERS
 24A: (NOT USED)
 24B: AS400 TERMINAL
 24C: OFFICE P.C.
 25. (NOT USED)
 26. 3 COMPARTMENT SAFE - 38 1/2" H x 19" W x 20" D
 27. (NOT USED)
STOCKROOM:
 28. NEST-A-FLEX CONVEYOR
 28A: (NOT USED)
 28B: 36"-62" H ADJUSTABLE LEGS
 29-31. (NOT USED)
EMPLOYEE ROOM:
 32-36. (NOT USED)
MISCELLANEOUS:
 37. "E" ELECTRICAL OUTLET FOR FUTURE USE
 38. VENDOR RACKS, PROVIDED AND INSTALLED BY VENDOR
 39-40. (NOT USED)
 41. PHOTO ORDER MANAGEMENT SYSTEM
 42-51. (NOT USED)
 52. NEW SIMPLIFY GRAPHIC PANEL
 53. COMM. CABINET
 53A: NEMA1 - CLIMATE CONTROLLED AREA
 53B: NEMA12 - AIR CONDITIONING
 54. TIME CLOCK
 55. INTEGRATED IN PHOTO KIOSK
 55B: AT FRONT CHECKOUT
 56. NEW POWER POLE

INTERIOR SIGNAGE

- GENERAL SALES AREA CEILING TYPE
 STANDARD LOW CEILING
 OPEN CEILING ACT CEILING
 LANGUAGE TYPE
 BILINGUAL PUERTO RICO

FURNITURE LEGEND

A1.1	GUEST CHAIR	0
A1.2	BIATRIC GUEST CHAIR	0
A2	SIDE CHAIR	0
A3.1	COUNTER STOOL	2
A5.1	TASK CHAIR (OFFICE)	0
A5.2	TASK STOOL (OFFICE)	0
A6	GUEST STOOL	0
A8	BENCH	0
B1.2	SIDE TABLE	0
B2	EMPLOYEE ROOM TABLE	0
B3.1	WORKTABLE - 24" X 27"	0
C1.1	LATERAL FILE	0
D2	MEDICAL STOOL	0

PROJECT DATA

TYPE		MARKET	<input checked="" type="checkbox"/>
NEW LOCATION	SECURITY	LIQUOR	<input type="checkbox"/>
EXIST'G BLDG	PHOTO	24 HOUR	<input type="checkbox"/>
REMODEL	PHARMACY		

SQUARE FOOT AREA SUMMARY

DEPARTMENT	SALES	STOCK	SERVICE	TOTAL EXIST'G	TOTAL NEW
GEN SALES	8947	1266	368	10581	0
MARKET	0	0	0	0	0
PHOTO	0	0	0	0	0
WINE + BEER	0	0	0	0	0
CLINIC	0	0	0	0	0
HHC	0	0	0	0	0
BSMT	0	0	0	0	0
2ND FLOOR	0	0	0	0	0
TOTAL EXIST'G	9775	1266	467	11508	0

TOTAL AREA: FIRST FLOOR: 11,508 SQ.FT.
 TOTAL AREA: OTHER LEVELS: 0 SQ.FT.
 GROSS AREA INCLUDING ALL DEPARTMENTS & ALL LEVELS: 11,508 SQ.FT.

SUMMARY OF CHANGES

LINEAL FOOTAGE

	EXISTING	PROPOSED	CHANGE
TOTAL LINEAL FOOTAGE (NOT INCLUDING LIQUOR STORAGE)	1,313 In ft	1,248 In ft	-5%
SHELVING	1,123 In ft	1,022 In ft	-9%
GREETING CARDS	72 In ft	88 In ft	22.2%
SEASONAL	88 In ft	108 In ft	22.7%
COOLERS	20 In ft	20 In ft	0%
FREEZERS	10 In ft	10 In ft	0%
LIQUOR SHELVING	0 In ft	0 In ft	##
LIQUOR COOLERS	0 In ft	0 In ft	##
LIQUOR FREEZERS	0 In ft	0 In ft	####
STOCK ROOM SHELVING	0 cu ft	0 cu ft	####
PHARMACY LINEAL FOOTAGE	79 In ft	76 In ft	-3.8%

PROMO FOOTAGE

	EXISTING	PROPOSED	CHANGE
END STAND QTY	37	33	-4 qty
SIDE PANEL QTY	28	50	22 qty
TABLE QTY	0	0	0 qty
QUEUEING	0	0	0 In ft
BEAUTY	24	24	0 In ft
PALLET QTY	1	4	3 qty

FIXTURE LEGEND

G	1919	36	66"	WT	ALL OTHER FIXTURES ARE TYPICALLY CALLED OUT DEPTH BY WIDTH.
GONDOLA (EA. SIDE)	D.	W.	H.	COLOR	
GE	19	47	66"	WT	EXAMPLE: DT 30 48
GONDOLA	D.	W.	H.	COLOR	DISPLAY D. W. TABLE NEW
WS	19	36	84"	WT	METAL TYPE: LOZIER
WALL SHLVG	D.	W.	H.	COLOR	
HALLMARK GONDOLA (EA. SIDE)	18	48	72"	WT	

*DOES NOT INCLUDE STANDARDS, WOOD GROUNDS OR FINISHED END PANELS

FIXTURE COLOR LEGEND

WT	WHITE
PT	PURTTY
AB	ARCHITECTURAL BRONZE
TP	TAUPE
GM	GUNMETAL GREY
SR	SILVER

REMODEL & HATCH LEGEND

	EXISTING		NEW
	RESET		LIT SHELVES: REFER TO MD1 FOR BACK PANEL COLOR AND TYPE



I HEREBY CERTIFY THAT THIS PLAN AND WAS PREPARED BY ME OR UNDER MY DIRECT SUPERVISION AND THAT I AM A DULY REGISTERED ARCHITECT OR ENGINEER IN THE STATE OF ILLINOIS AND AS SIGNED BY MY HAND AND SEAL.

9 07/26/21 VR STR#210330 HIGH RISK REMOVALS
 8 12/16/19 JS ISSUE#69964-COORDINATOR WALL UPDATED
 7 11/06/19 JS ISSUE#62965-SAFE LOCATION ADJUSTED PER CORPORATION: CMT#295
 6 10/09/19 NNN 746 RAD CONVERSION DT17/MD1 CORPORATION: CMT#295

REVISIONS

NO.	DATE	BY	DESCRIPTION
5	08/16/19	NNN	746 RAD FULL CONVERSION - UPDATE
4	12/19/18	NNN	746 RAD FULL CONVERSION - UPDATE
3	05/23/18	NNN	RAD CONVERSION MD1 COORDINATION
2	04/13/18	MG	746 RAD FULL CONVERSION INITIAL D111
1	04/07/18	BM	RAD CONVERSION

FILE NAME: 19399D11-08-16DEC19
 STORE NUMBER 19399
WALGREENS
 21 KINGSTOWN RD
 RICHMOND, RHODE ISLAND
 RAD 10246

DRAWN BY: J. SCOTT
 DATE: 04/07/18
 REVIEWED: A. SHAH