



FOR LEASE

Air-Conditioned Warehouse

1100 N SWIFT RD, ADDISON, IL

134,790 SF



PROPERTY HIGHLIGHTS

Building Size 134,790 SF

Office Size 6,859 SF

Air-Conditioned Warehouse ±87,000 SF

Year Built 1995

Ceiling Height 31'

Truck Docks 19 Exterior Docks w/levelers

Drive-In-Doors 1 Drive-in-Door

Sprinkler System ESFR

Parking 49

Trailer Parking 11

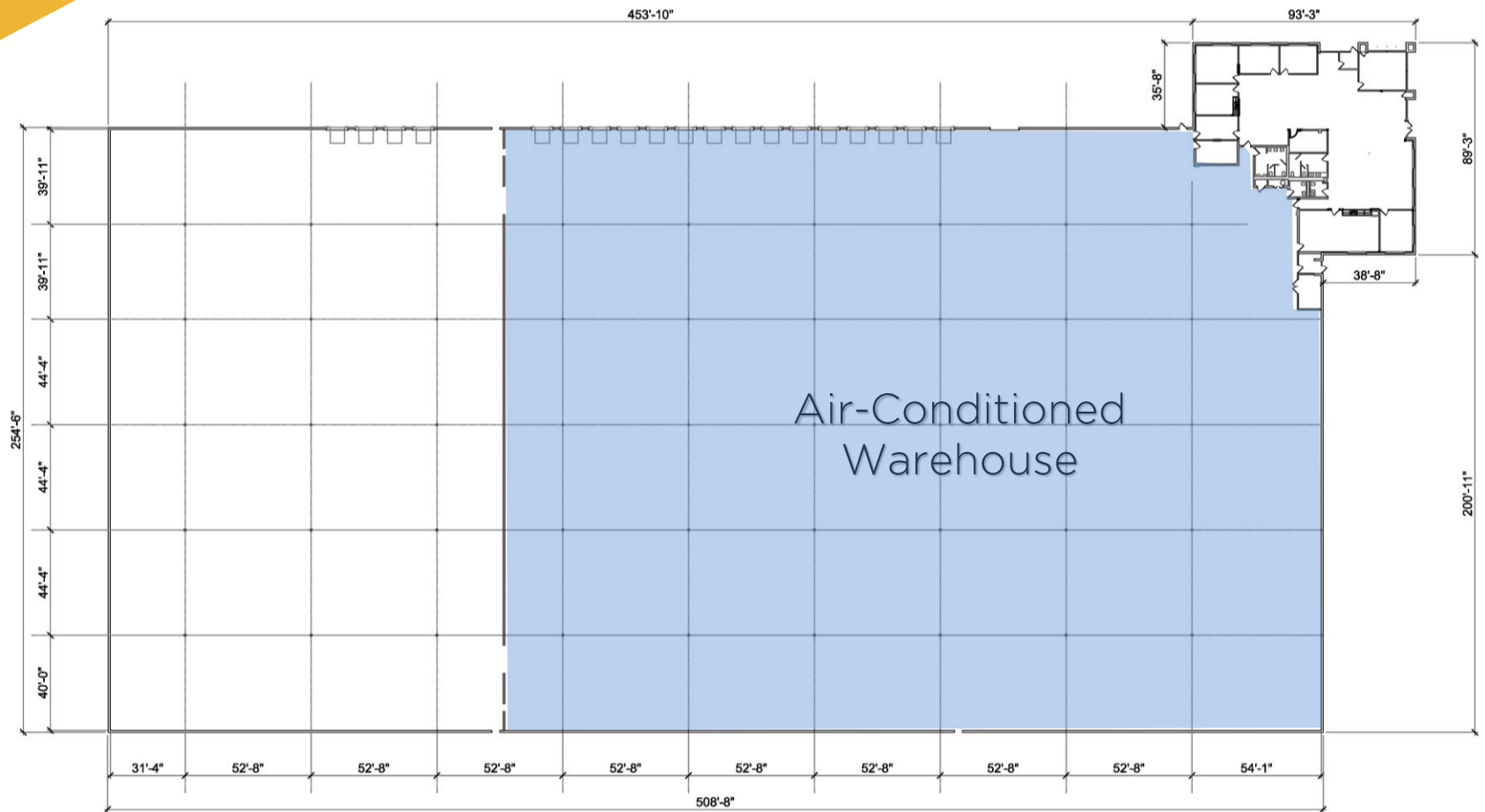
Power 2,000 amps @ 480v

Land 6.22 acres

Zoning I-1 Heavy Commercial / Light Industrial



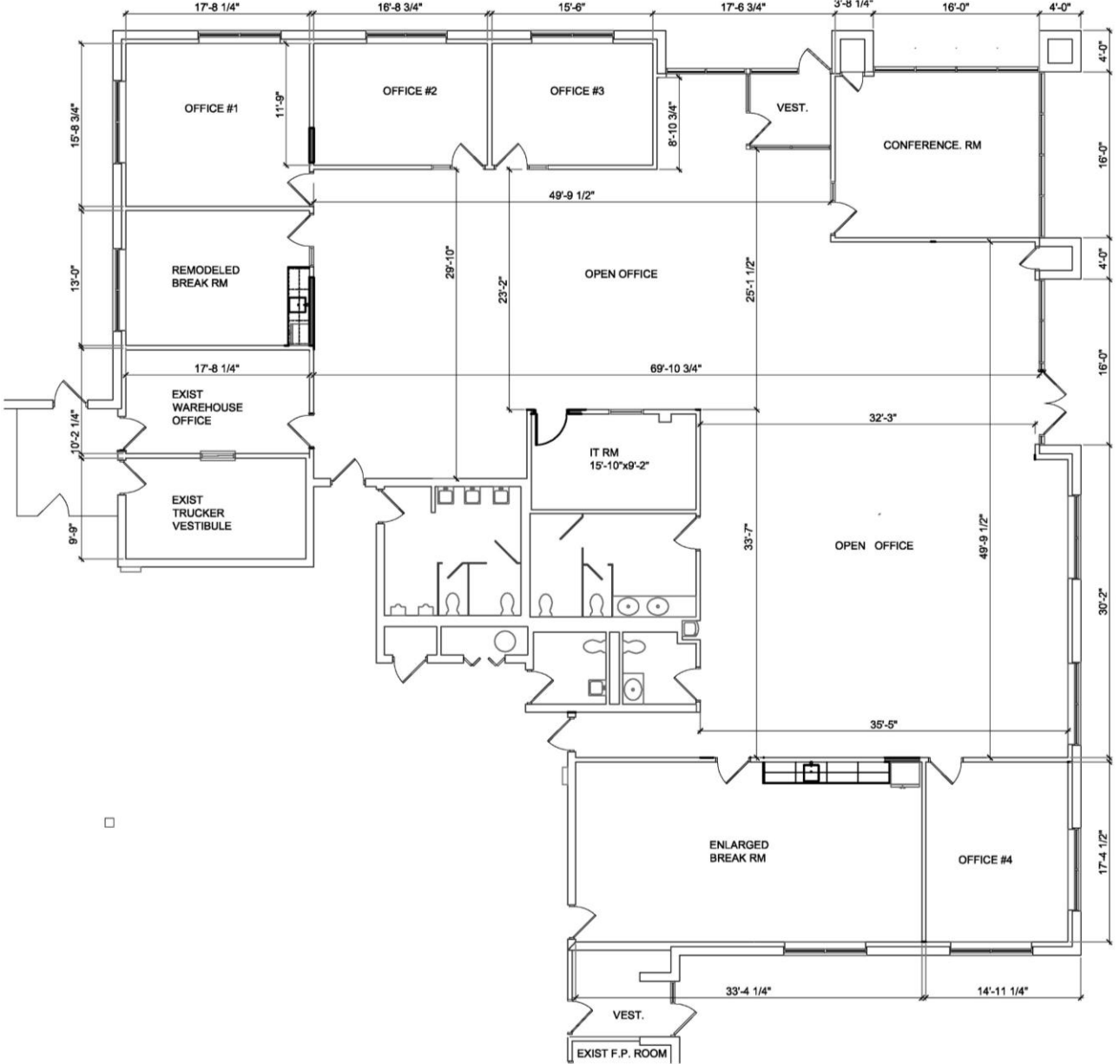
134,790 SF



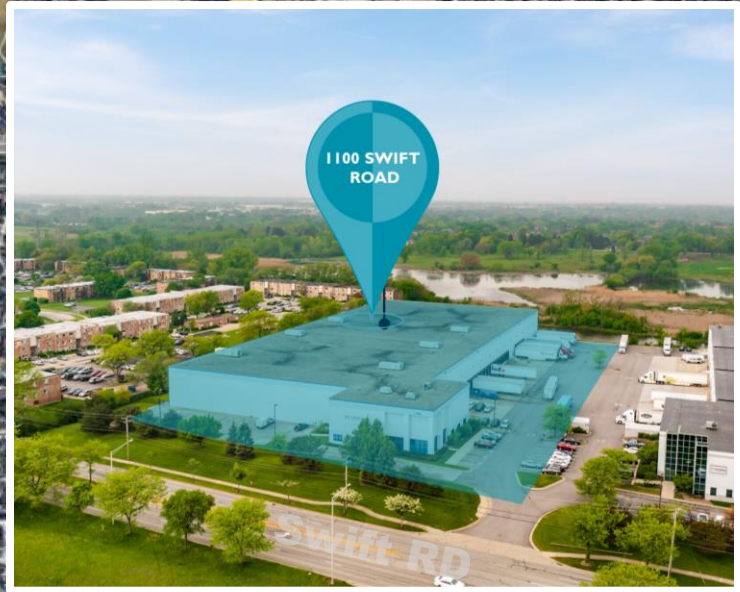
- 100% Food Grade Facility
- ±87,000 sf of air-conditioned warehouse space
- 11 on site trailer parking spaces
- Institutionally Owned and Managed
- Low DuPage County RE Taxes
- Within Meadows Business Park
- Immediate access to I-355 via Lake Street Interchange and Army Trail Road

6,859 SF

OFFICE PLAN



LOCATION MAP





1100 N. SWIFT RD

For more information,
please contact:

Britt Casey

Executive Vice Chairman

847 518 3280

Britt.Casey@cushwake.com

Jeff Matella

Director

847 720 1349

Jeff.Matella@cushwake.com

©2024 Cushman & Wakefield. All rights reserved. The information contained in this communication is strictly confidential. This information has been obtained from sources believed to be reliable but has not been verified. NO WARRANTY OR REPRESENTATION, EXPRESS OR IMPLIED, IS MADE AS TO THE CONDITION OF THE PROPERTY (OR PROPERTIES) REFERENCED HEREIN OR AS TO THE ACCURACY OR COMPLETENESS OF THE INFORMATION CONTAINED HEREIN, AND SAME IS SUBMITTED SUBJECT TO ERRORS, OMISSIONS, CHANGE OF PRICE, RENTAL OR OTHER CONDITIONS, WITHDRAWAL WITHOUT NOTICE, AND TO ANY SPECIAL LISTING CONDITIONS IMPOSED BY THE PROPERTY OWNER(S). ANY PROJECTIONS, OPINIONS OR ESTIMATES ARE SUBJECT TO UNCERTAINTY AND DO NOT SIGNIFY CURRENT OR FUTURE PROPERTY PERFORMANCE.

9500 West Bryn Mawr Ave

Suite 600

Rosemont, Illinois 60018

cushmanwakefield.com

