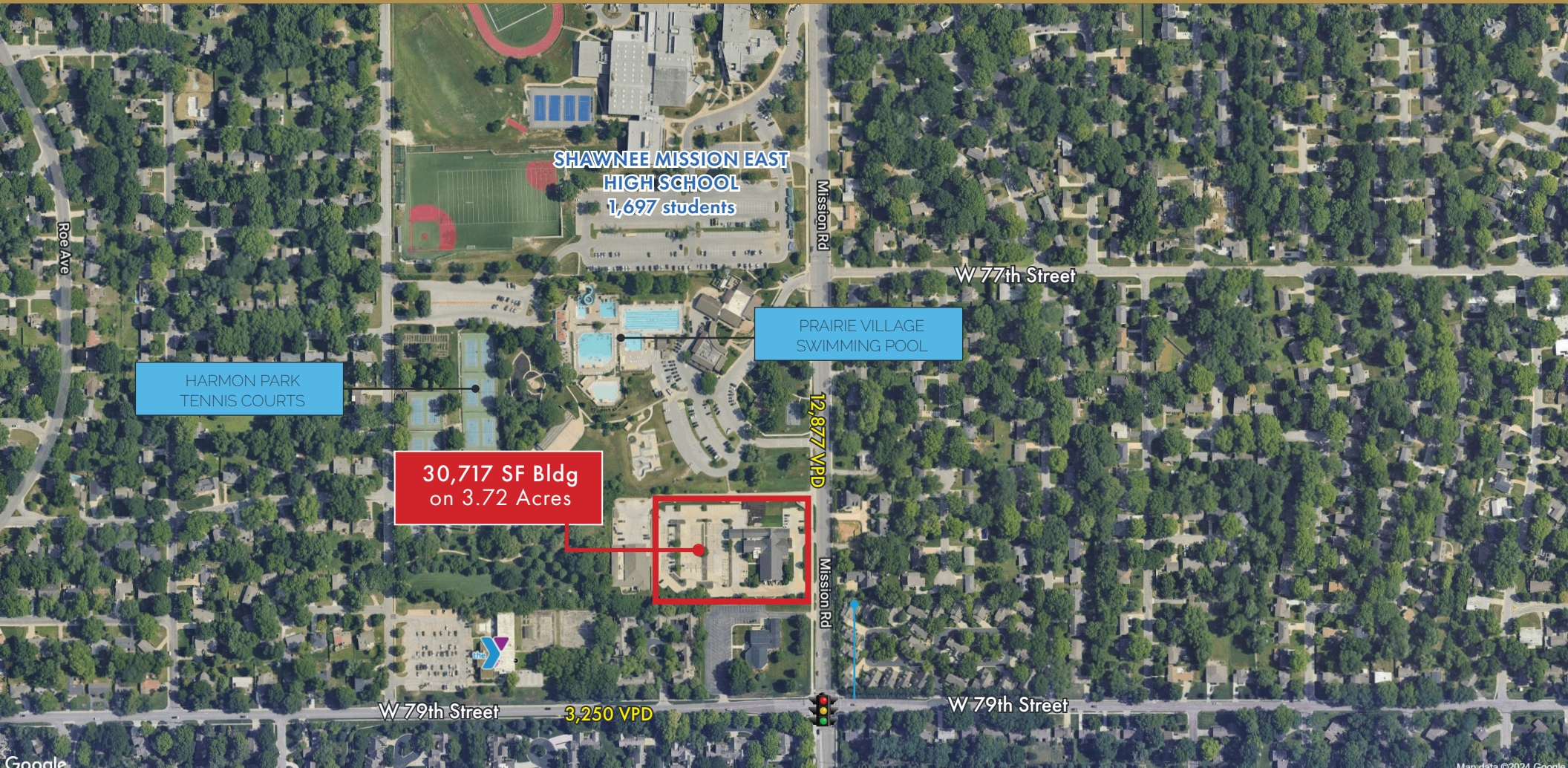


FOR SALE – FIRST TIME TO MARKET!

PRAIRIE VILLAGE, KS



IDEAL FOR CHURCH, SCHOOL, SENIOR LIVING, RESIDENTIAL  
7820 MISSION RD., PRAIRIE VILLAGE, KS

913 914 7010  
7121 West 79th Street  
Overland Park, KS 66204

[www.elevatepropertyadvisors.com](http://www.elevatepropertyadvisors.com)



# PROPERTY HIGHLIGHTS

## PROPERTY FEATURES

- First Time To Market!
- Rare Prairie Village Property – 79th and Mission Road
- Existing 30,717 SF church building (includes basement) on 3.72 acres
- Zoned R-1 – ideal for Church, School, Senior Living, Residential
- 600 Person Sanctuary
- 170 parking spaces
- Built in 1959 with Renovations done in 2017/2022
- Call for Pricing



## AREA DEMOGRAPHICS

### Total Population



1 MILE: 12,228  
3 MILE: 101,274  
5 MILE: 268,643

### Daytime Population



1 MILE: 5,783  
3 MILE: 43,522  
5 MILE: 192,230

### Avg. HH Income



1 MILE: \$183,500  
3 MILE: \$158,037  
5 MILE: \$125,195

# NEIGHBORHOOD AERIAL



