



**CUSHMAN &  
WAKEFIELD**



**Pyramid Brokerage  
Company**

**890 East Brighton Avenue  
Syracuse, New York 13205**



**FOR SALE**

## INVESTMENT OPPORTUNITY

### Property Highlights

- Well maintained four (4) building office park
- 16,640± total square feet on 3.3± acre parcel
- Successful rental history over many years
- Outstanding location that provides excellent access to Downtown, S.U., eastern suburbs and Onondaga Hill
- Immediate access to I-81 and I-481
- Panoramic view from the top of Brighton Hill
- Plenty of parking (50) spaces



### EXCLUSIVE CONTACT

**Gary G. Cottet**  
**Associate Real Estate Broker**  
+1 315 445 8529  
gcottet@pyramidbrokerage.com

**Mark Austin**  
**Real Estate Salesperson**  
+1 315 445 8538  
maustin@pyramidbrokerage.com

5845 Widewaters Parkway, Suite 200  
East Syracuse, New York 13057  
+1 315 445 1030  
**pyramidbrokerage.com**

Independently Owned and Operated / A Member of the Cushman & Wakefield Alliance  
Cushman & Wakefield Copyright 2025. No warranty or representation, express or implied, is made to the accuracy or completeness of the information contained herein, and same is submitted subject to errors, omissions, change of price, rental or other conditions, withdrawal without notice, and to any special listing conditions imposed by the property owner(s). As applicable, we make no representation as to the condition of the property (or properties) in question.



Fantastic views



Close to Syracuse University



Plenty of parking



Immediate access too area interstates

- Panoramic view from top of Brighton Hill
- Quick access to I-81, I-481, Downtown Syracuse, Syracuse University, Eastern Suburbs and Onondaga Hill





**CUSHMAN &  
WAKEFIELD**



**Pyramid Brokerage  
Company**

**890 East Brighton Avenue  
Syracuse, New York 13205**

**Brighton Hill Office Park  
Building 892**



- 7,040± gross SF on two (2) levels
- Two (2) suites on upper level, two (2) suites on the lower level
- Handicap accessible elevator
- Lots of windows on both levels offer panoramic views from the top of Brighton Hill



**CUSHMAN &  
WAKEFIELD**



**Pyramid Brokerage  
Company**

**890 East Brighton Avenue  
Syracuse, New York 13205**

**Brighton Hill Office Park  
Building 890**



- 3,200± gross SF on two (2) levels
- One (1) suite on each level
- Handicap accessible elevator
- Lots of windows on both levels



**Brighton Hill Office Park  
Building 888**

- 3,200± gross SF on two (2) levels
- Two (2) suites on upper level, one (1) suite on the lower level
- Handicap accessible elevator
- Plenty of windows provide great views from each level



**CUSHMAN &  
WAKEFIELD**



**Pyramid Brokerage  
Company**

**890 East Brighton Avenue  
Syracuse, New York 13205**

**Brighton Hill Office Park  
Building 886**



- 3,200± gross SF on two (2) levels
- One (1) suite on each level (could be two (2) suites on upper level)
- Handicap accessible elevator



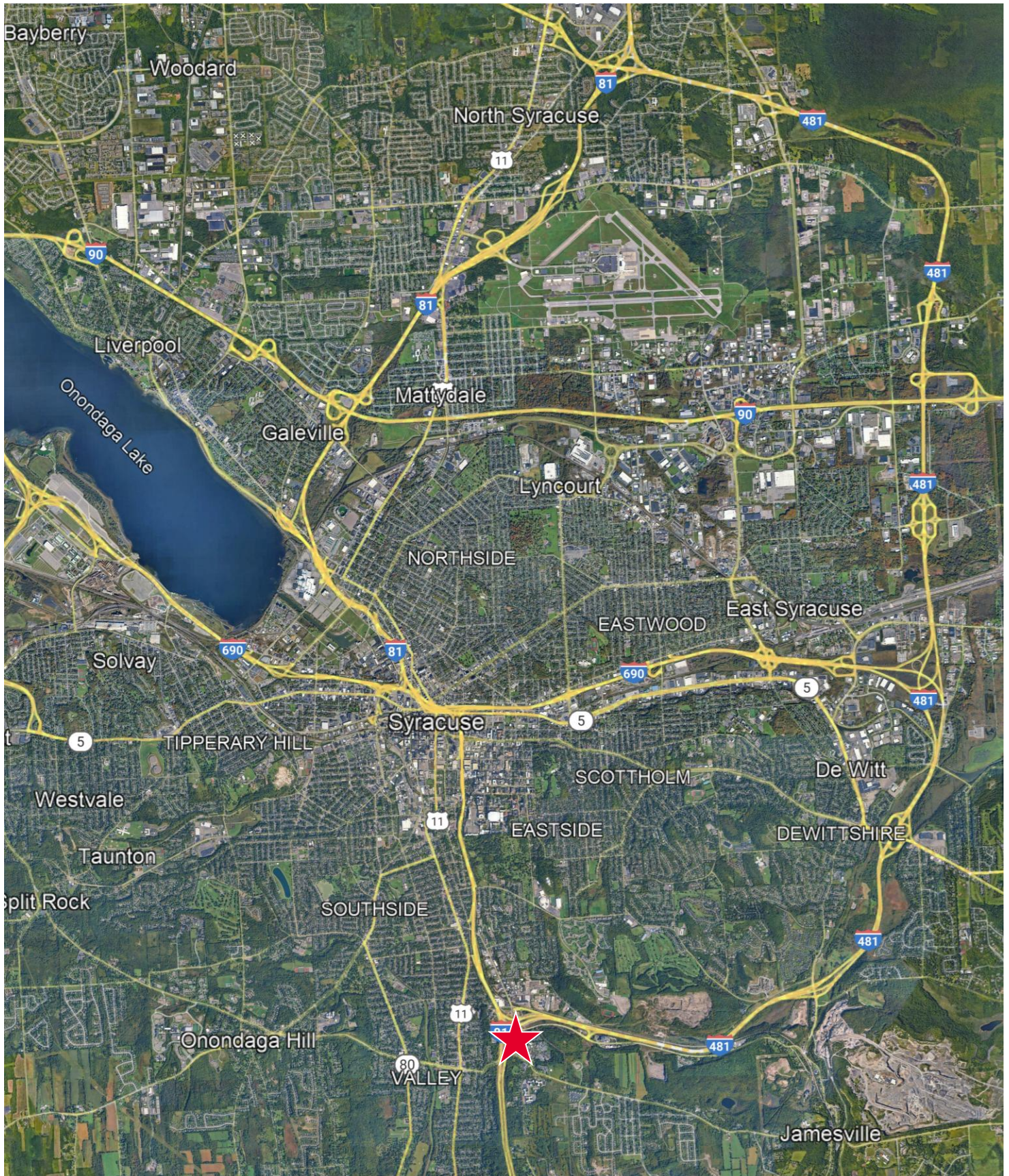


**CUSHMAN &  
WAKEFIELD**



**Pyramid Brokerage  
Company**

**890 East Brighton Avenue  
Syracuse, New York 13205**



Independently Owned and Operated / A Member of the Cushman & Wakefield Alliance

Cushman & Wakefield Copyright 2025. No warranty or representation, express or implied, is made to the accuracy or completeness of the information contained herein, and same is submitted subject to errors, omissions, change of price, rental or other conditions, withdrawal without notice, and to any special listing conditions imposed by the property owner(s). As applicable, we make no representation as to the condition of the property (or properties) in question.



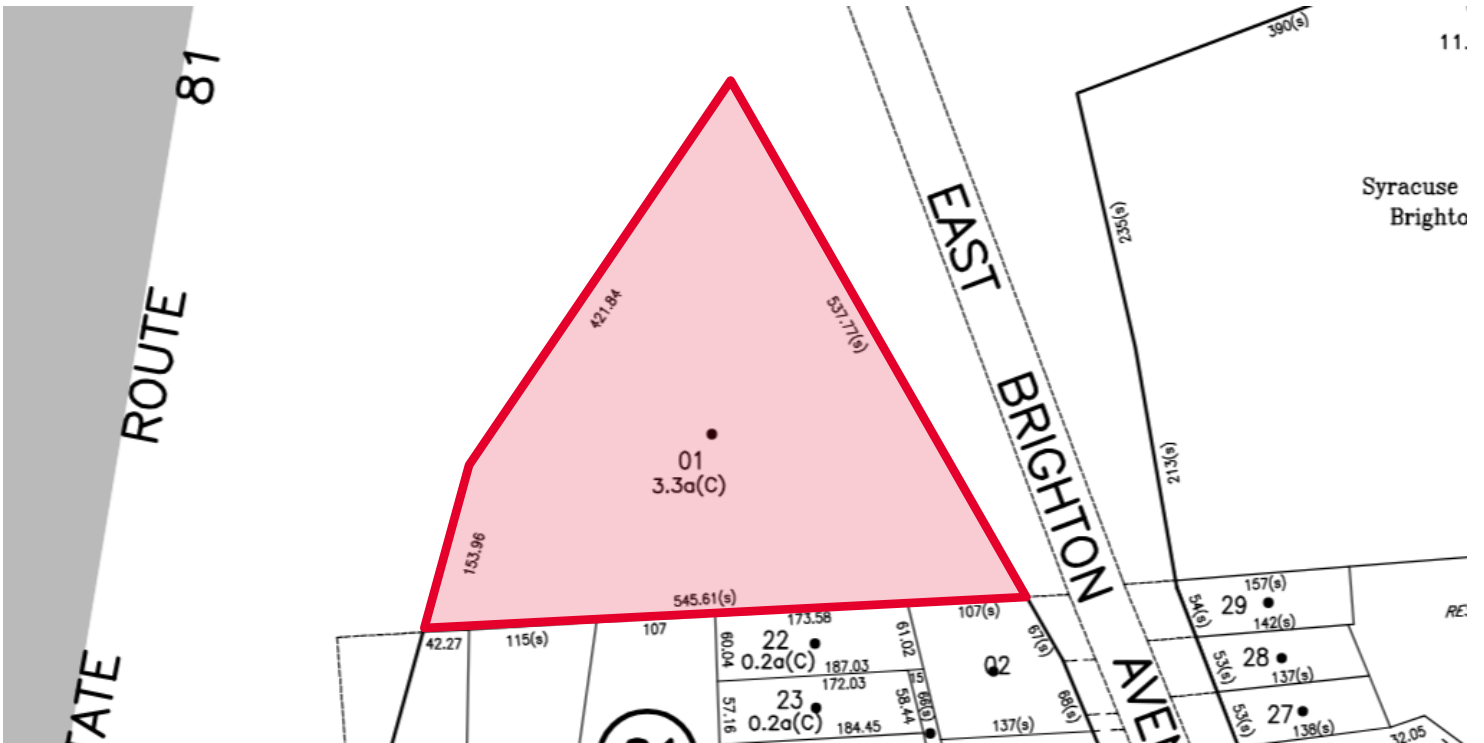


CUSHMAN &  
WAKEFIELD



Pyramid Brokerage  
Company

890 East Brighton Avenue  
Syracuse, New York 13205



Independently Owned and Operated / A Member of the Cushman & Wakefield Alliance

Cushman & Wakefield Copyright 2025. No warranty or representation, express or implied, is made to the accuracy or completeness of the information contained herein, and same is submitted subject to errors, omissions, change of price, rental or other conditions, withdrawal without notice, and to any special listing conditions imposed by the property owner(s). As applicable, we make no representation as to the condition of the property (or properties) in question.