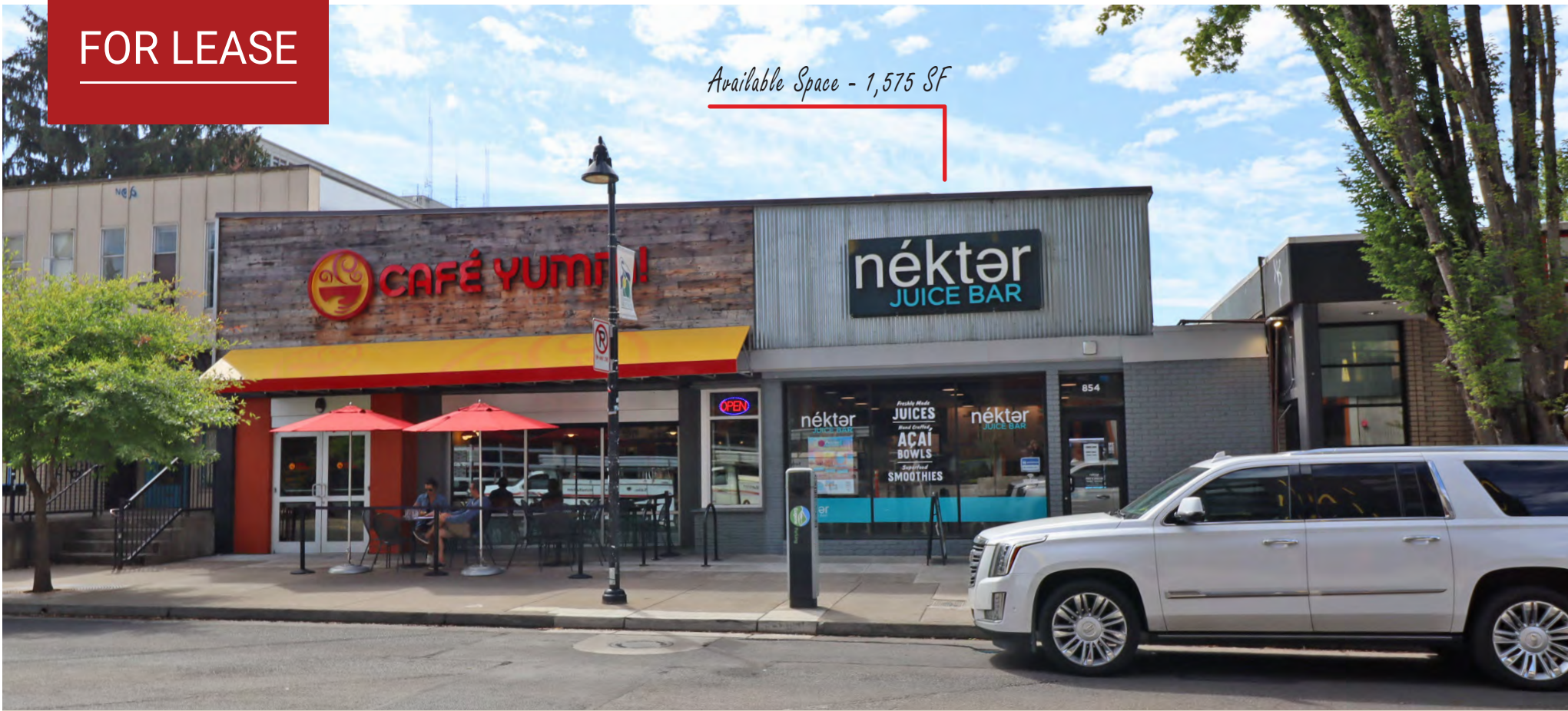


**FOR LEASE**

*Available Space - 1,575 SF*



**854 E 13TH AVENUE - EUGENE, OREGON**

## CAMPUS RETAIL SPACE UNIVERSITY OF OREGON

- 1,575 SQUARE FEET
- SPACE HAS KITCHEN AREA (NO HOOD)
- LOCATED ON THE UNIVERSITY OF OREGON CAMPUS
- ACROSS FROM THE NEW FLOCK 13 STUDENT APARTMENTS (394 BEDS)
- HIGH VISIBILITY AND HEAVY FOOT TRAFFIC

*Lease Rate:* \$38.00/SF/NNN

**Campbell**  
COMMERCIAL  
REAL ESTATE  
www.campbellre.com

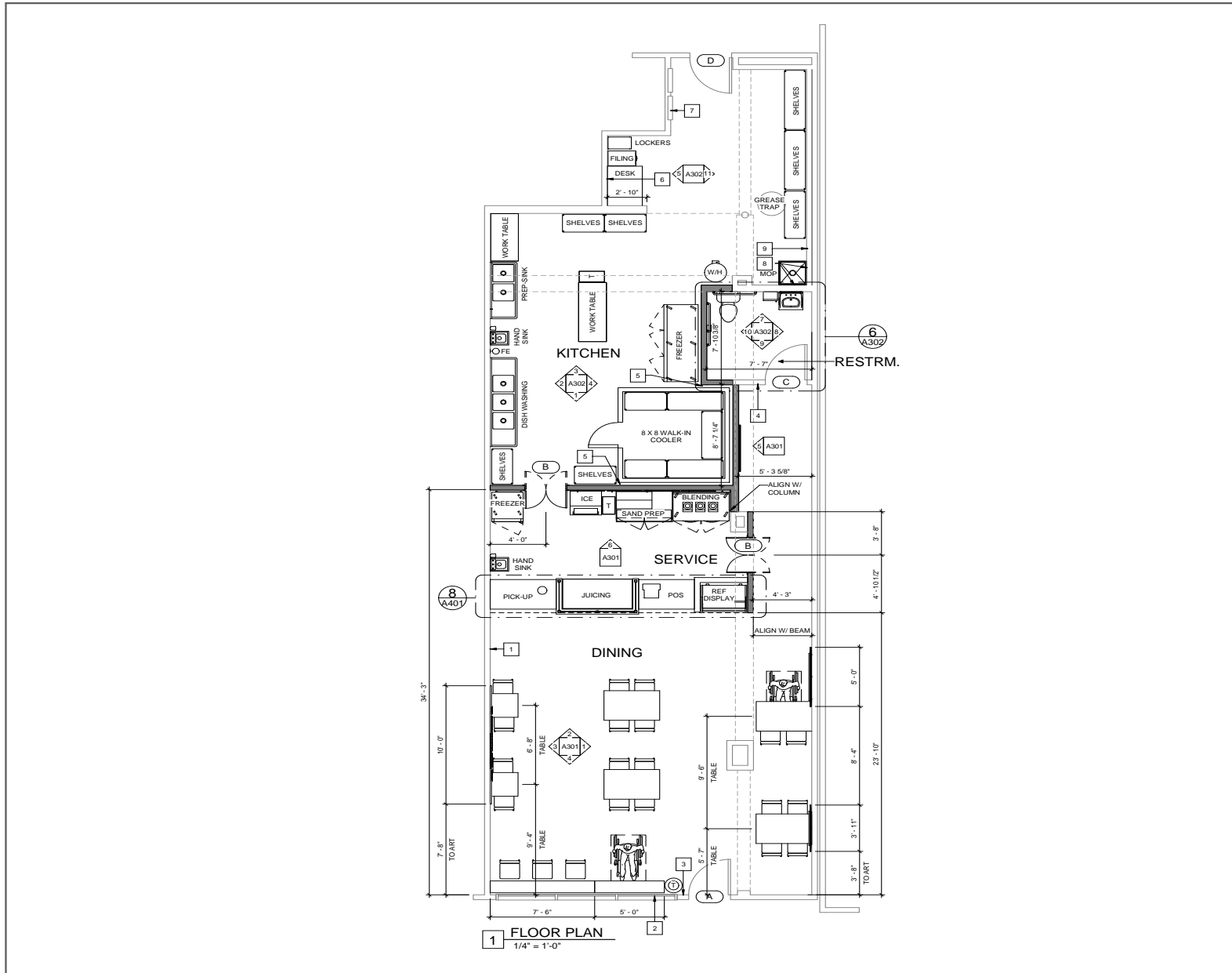
*For more information contact:*

**BILL NEWLAND**  
bill@campbellre.com | (541) 484-2214  
Licensed in the State of Oregon

**TIM CAMPBELL**  
timc@campbellre.com | (541) 285-8865  
Licensed in the State of Oregon

The information in this package was obtained from sources deemed reliable, and is not guaranteed by agent. Package is subject to change, error or omission, prior sale or lease, correction or withdrawal. Any party contemplating purchase is urged to conduct their own independent study and inspection.

# FLOOR PLAN - 854 E 13TH AVE



The information in this package was obtained from sources deemed reliable, and is not guaranteed by agent. Package is subject to change, error or omission, prior sale or lease, correction or withdrawal. Any party contemplating purchase is urged to conduct their own independent study and inspection.

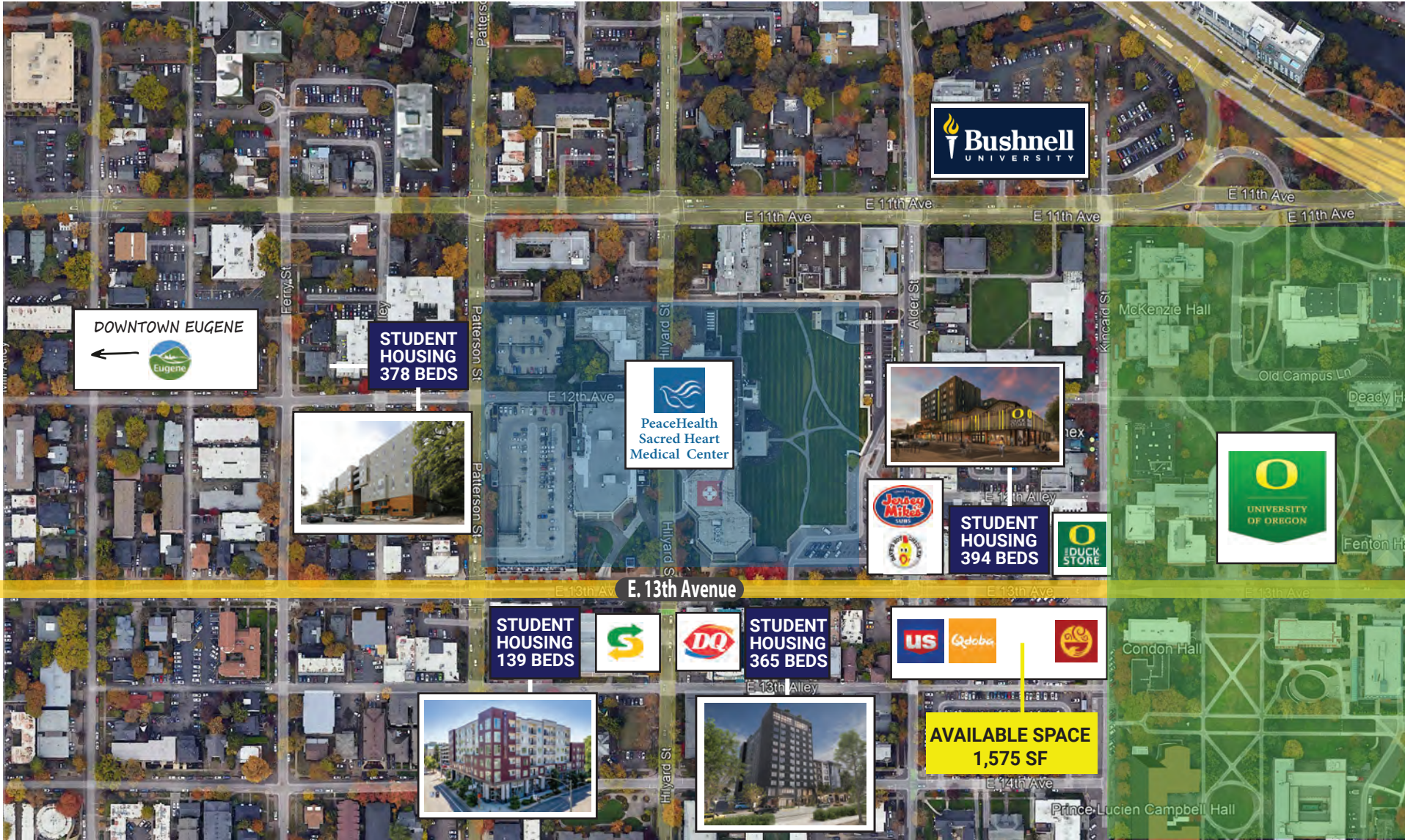
# INTERIOR PHOTOS

---



The information in this package was obtained from sources deemed reliable, and is not guaranteed by agent. Package is subject to change, error or omission, prior sale or lease, correction or withdrawal. Any party contemplating purchase is urged to conduct their own independent study and inspection.

# PROPERTY LOCATION MAP



The information in this package was obtained from sources deemed reliable, and is not guaranteed by agent. Package is subject to change, error or omission, prior sale or lease, correction or withdrawal. Any party contemplating purchase is urged to conduct their own independent study and inspection.