

58-48 59th street
Queens NY
11378
2nd Floor

Office / Light Storage

SERHANT.

COMMERCIAL



Shahriar Alom
Shah@serhant.com
(646) 717-1832

Serhant LLC

- 03 ● Executive Summary
- 04 ● Location Overview
- 05 ● The Space
- 06 ● Contact



Contents

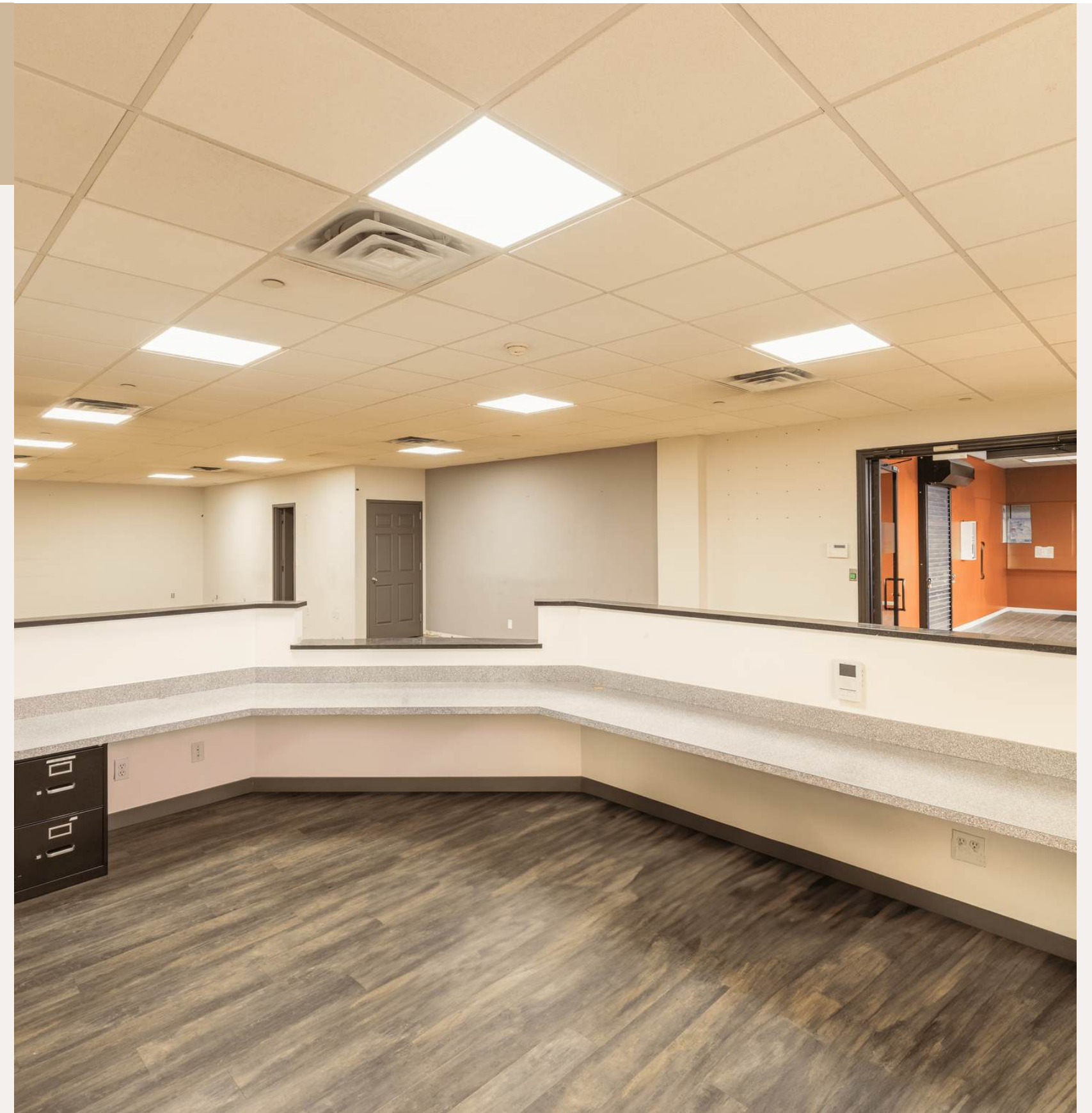
Executive Summary

Serhant LLC has been exclusively retained to lease the **2nd floor at 58-48 59th street Queens NY 11378** . Discover a spacious and versatile 5,000 square foot office space available for lease. in the heart of Queens NY. This well-appointed facility is ideal for a variety of businesses seeking a modern and convenient workspace.

Key Features:

- **Generous Layout:** Ample **5000 square feet** allows for flexible configurations, accommodating open-plan layouts, private offices, meeting rooms, and collaborative spaces. **There is also a spacious private outdoor terrace.**
- **Natural Light:** Large windows throughout the space provide abundant natural light, creating a bright and inviting atmosphere.
- **Amenities:** Includes high-speed internet access, HVAC system, and modern restrooms, ensuring a comfortable working environment.
- **Accessibility:** Conveniently located with easy access to major highways, public transportation, and nearby amenities, making it easy for employees and clients to reach.
- **Local Surroundings:** Situated in a vibrant commercial area with nearby dining, retail, and services, enhancing the appeal of the location.

This office space presents an excellent opportunity for businesses looking to establish themselves in a dynamic neighborhood. Don't miss out on the chance to elevate your workspace in Maspeth, Queens!



Location Overview

- **Maspeth** is a vibrant neighborhood in Queens, New York, known for its rich history, diverse community, and strategic location. Originally settled in the 17th century, it has evolved from a primarily industrial area into a thriving residential and commercial hub.
- **Key Highlights:**
- **Location:** Maspeth is conveniently situated near major highways, such as the Long Island Expressway and the Brooklyn-Queens Expressway, making it easily accessible from Manhattan and other boroughs. Its proximity to public transportation, including several bus lines, enhances connectivity.
- **Community:** The neighborhood boasts a diverse population, with a blend of cultures contributing to its unique character. This diversity is reflected in local businesses, restaurants, and community events.
- **Commercial Growth:** Maspeth features a mix of commercial spaces, from warehouses to retail establishments, supporting a growing business environment. The area is increasingly appealing to startups and established companies alike.
- **Parks and Recreation:** Residents enjoy access to green spaces such as Maspeth Memorial Park, which offers recreational facilities, playgrounds, and scenic areas for relaxation and outdoor activities.
- **Historic Charm:** Maspeth maintains a quaint, suburban feel with tree-lined streets and historic homes. The neighborhood's rich history is evident in its architecture and local landmarks.
- **Quality of Life:** The area is known for its strong sense of community, good schools, and family-friendly atmosphere, making it an attractive place for families and young professionals.
- **Overall,** Maspeth combines urban convenience with a suburban lifestyle, making it a desirable location for both living and working. Whether you're a business looking to establish a presence or a resident seeking a welcoming community, Maspeth has much to offer.



The Space



The Space



The Space



Shahriar Alom
Shah@serhant.com
(646) 717-1832

Serhant LLC

The Space



Shahriar Alom
Shah@serhant.com
(646) 717-1832

Serhant LLC

For all Inquires

Contact

Shahriar Alom

646-717-1832

Shah@Serhant.com