

PRIVATE OFFICE UNITS FOR LEASE



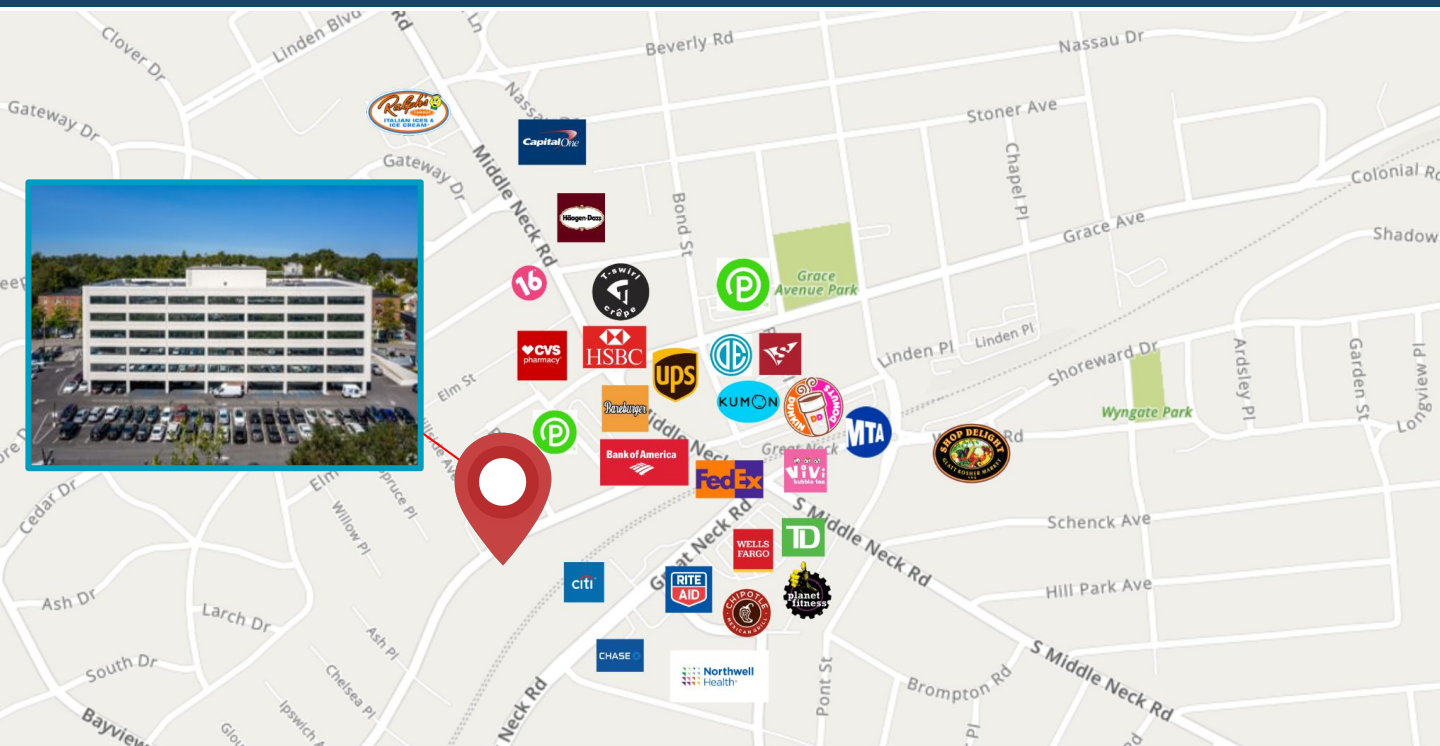
60 CUTTERMILL ROAD , GREAT NECK. NEW YORK

THIS BEAUTIFUL OFFICE BUILDING FEATURES A BRAND NEW MODERN LOBBY AND RECENTLY DONE BATHROOMS. GROUND LEVEL AND SUBTERRANEAN PARKING GARAGES GIVES THIS BUILDING AMPLE PARKING UNMATCHED BY ANY OTHER IN THE AREA. THE RECENT ADDITION OF AN OUTDOOR SEATING AREA IS GREAT FOR ANY OUTDOOR MEETINGS OR BREAKS!

STRATEGICALLY LOCATED NEAR THE LIRR STATION, APPROX. 20 MIN. RIDE TO MANHATTAN, AND CLOSE TO ALL EATERIES, CAFES, BANKS, AND PUBLIC TRANSPORT. ALL TENANTS HAVE 24/7 ACCESS TO THE BUILDING. A BUILDING TRULY UNMATCHED IN QUALITY AND EMINENCE, CONTACT TODAY.



ROZITA SOOMEKH
LICENSED REAL ESTATE BROKER
516.205.2279



OTHER NOTABLE BUSINESSES IN THE AREA



Available Units - All Utilities, Wifi & Parking Included

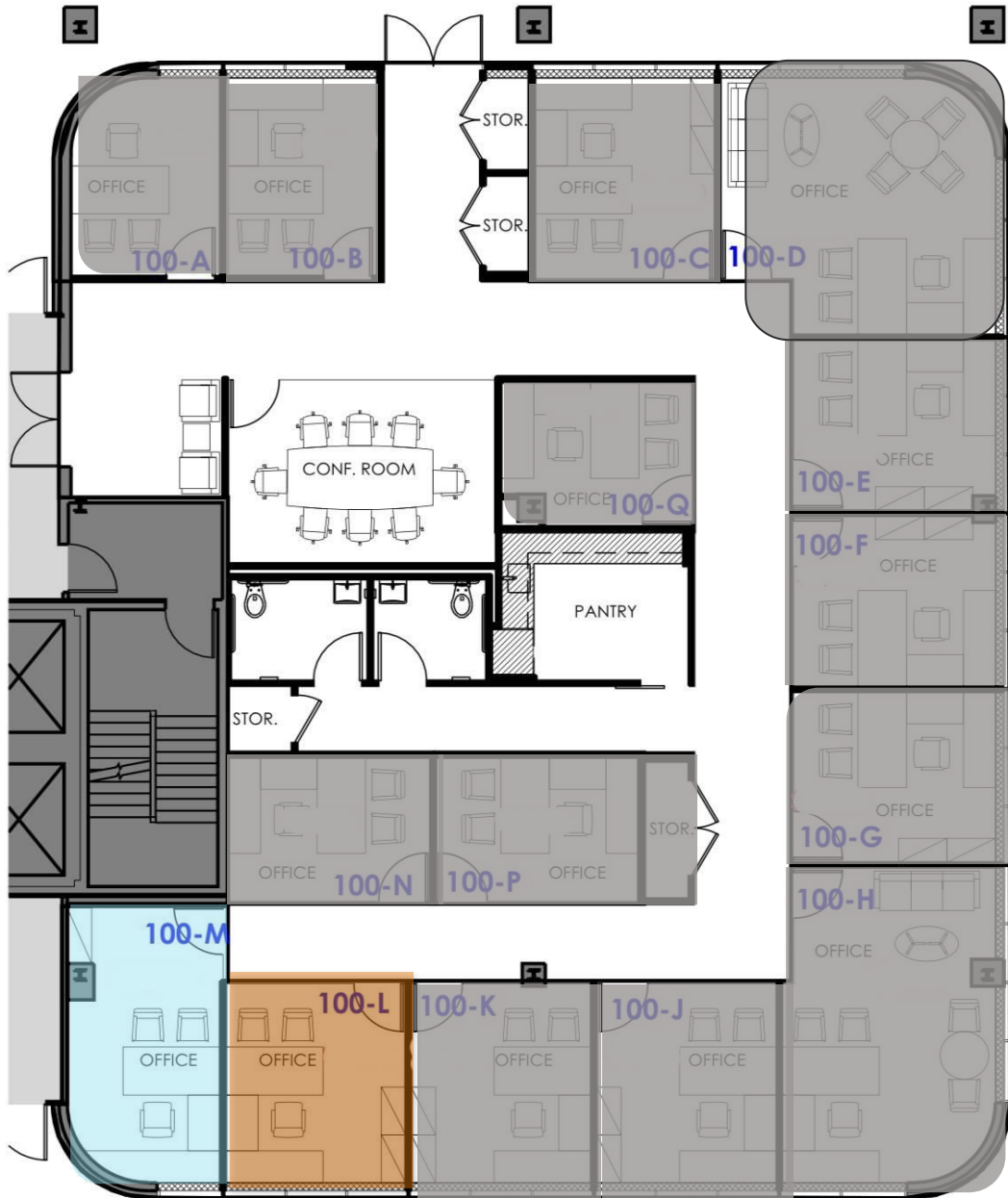
<i>UNIT#</i>		<i>RENT (\$)</i>
100-L	Window	\$1,195
100-M	Window	\$1,095

NEW Carpet, Lighting, Paint and Furniture



ROZITA SOOMEKH
Licensed Real Estate Broker
Rozita.Soomekh@elliman.com
516.205.2279

THE ROZITA SOOMEKH TEAM
at Douglas Elliman Real Estate



**NEW Carpet, Lighting,
Paint and Furniture**

UNIT

RENT (\$)

100-L

Window

\$1,195

100-M

Window

\$1,095



ROZITA SOOMEKH
Licensed Real Estate Broker
Rozita.Soomekh@elliman.com
516.205.2279

 **THE**
ROZITA
SOOMEKH
TEAM at Douglas Elliman
Real Estate

GREAT NECK

NEW YORK

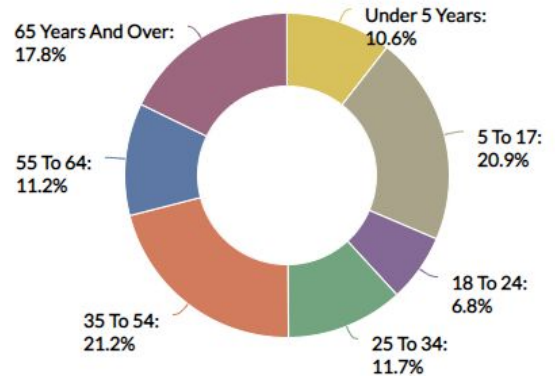


Great Neck is a region on Long Island, New York, that covers a peninsula on the North Shore and includes 9 villages, such as the villages of Great Neck, Great Neck Estates, Great Neck Plaza, Kings Point, and Russell Gardens, and a number of unincorporated areas, as well as an area south of the peninsula near Lake Success and the border territory of Queens.

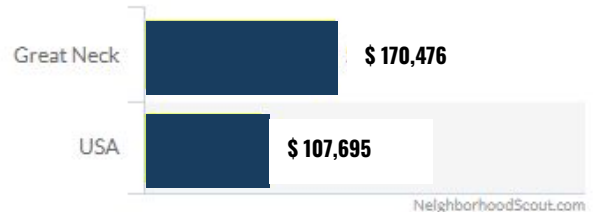
TOTAL POPULATION

±11,000

Age Demographic



MEDIAN HOUSEHOLD INCOME



SCAN TO VIEW
ALL OUR LISTINGS



 Douglas Elliman

