



**COLDWELL
BANKER
COMMERCIAL**

LYLE & ASSOCIATES, LP

**MEDICAL OR OFFICE SPACE
\$1.50 PSF / NNN**

**SUITE A6-A9 - 3,758 SF
CREATE YOUR OWN CUSTOM SPACE
SUITE C10-C14 - 6,266 SF**

72855 Fred Waring Dr
Palm Desert, CA 92260

MUST SEE! Professional Medical and General Office spaces. Highly sought-after location. Unique architecture. Centrally located in the heart of Palm Desert on heavily traveled Fred Waring Drive proximate to College of the Desert and Westfield Shopping Center. Great signage visibility.



MEDICAL & OFFICE SPACE

Marta Ward Blodgett
310 493 0580
mward@cbclyle.net
CalDRE #01309501

©2023 Coldwell Banker. All Rights Reserved. Coldwell Banker Commercial® and the Coldwell Banker Commercial logos are trademarks of Coldwell Banker Real Estate LLC. The Coldwell Banker® System is comprised of company owned offices which are owned by a subsidiary of Anywhere Advisors LLC and franchised offices which are independently owned and operated. The Coldwell Banker System fully supports the principles of the Equal Opportunity Act.

**COLDWELL BANKER COMMERCIAL
LYLE & ASSOCIATES, LP
78000 Fred Waring Drive, Suite 200, Palm Desert, CA 92211
760.772.6400**

FOR LEASE

CBCWORLDWIDE.COM



MESA OFFICE BUILDING

72855 Fred Waring Dr, Palm Desert, CA 92260

LEASE



OFFERING SUMMARY

| | |
|---------------|--------------|
| Available SF: | A6-A9 |
| | 3,758 SF |
| | C10-C14 |
| | 6,266 SF |
| Lease Rate: | \$1.50 |
| | PSF/Month |
| | \$0.52 (NNN) |

Building Size: 8,015 SF

Zoning: OP - Office Professional

CBCWORLDWIDE.COM

Marta Ward Blodgett
310 493 0580
mward@cbclyle.net
CalDRE #01309501

PROPERTY OVERVIEW

Medical and General Office spaces available.

PROPERTY HIGHLIGHTS

- SUITE A6-A9 - CREATE YOUR OWN CUSTOM SPACE
- Partially Built out office or medical space ready for Tenant Improvements
- The current partial build-out contains a large lobby and reception area.
- 8 exam rooms, 5 offices, and a special procedure room
- Breakroom/lounge, 4 restrooms, and storage in multiple areas
- Can divide for qualified tenant. (Generous tenant improvements.)
- Create your customized suite for tenant's individual needs.
- Currently in grey shell condition.
- SUITE C10-C14
- Multiple ultrasound, MRI, CT, and X-ray exam/control rooms. (Some with sinks.)
- Beautiful lobby, front office, and several other office spaces, a nurses' station, multiple dressing rooms, and supplies/storage.
- Multiple restrooms.



COLDWELL
BANKER
COMMERCIAL

LYLE & ASSOCIATES,
LP



LEASE

MESA OFFICE BUILDING - EXTERIOR PHOTOS

72855 Fred Waring Dr, Palm Desert, CA 92260



CBCWORLDWIDE.COM

Marta Ward Blodgett
310 493 0580
mward@cbclyle.net
CalDRE #01309501

**COLDWELL
BANKER
COMMERCIAL**
LYLE & ASSOCIATES,
LP

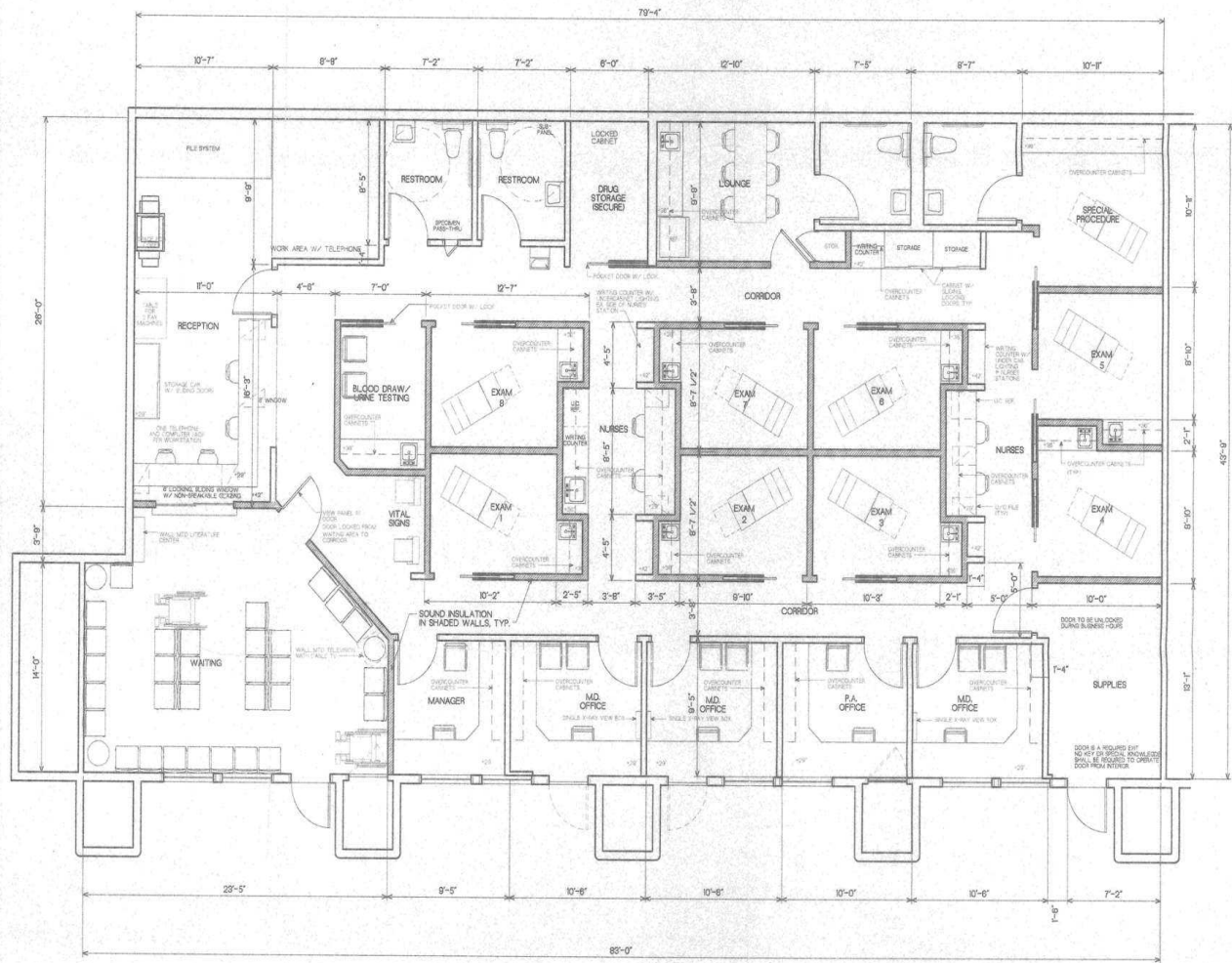


SUITE A6-A9 - 3,758 SF FLOORPLAN

72855 Fred Waring Dr, Palm Desert, CA 92260

CURRENT PARTIAL BUILDOUT

LEASE



SUITE A6 - A9

CBCWORLDWIDE.COM

Marta Ward Blodgett
310 493 0580
mward@cbclyle.net
CalDRE #01309501

**COLDWELL
BANKER
COMMERCIAL**
LYLE & ASSOCIATES,
LP



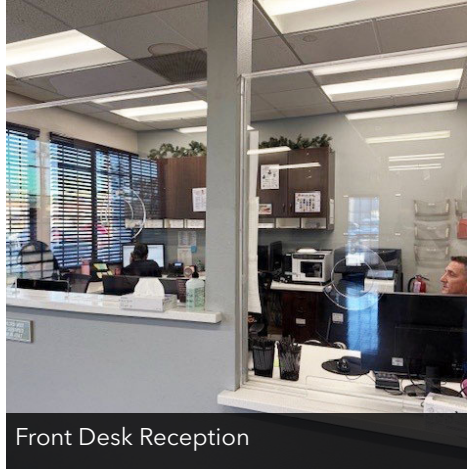
SUITE C10-C14 - 6,266 SF INTERIOR PHOTOS

72855 Fred Waring Dr, Palm Desert, CA 92260

LEASE



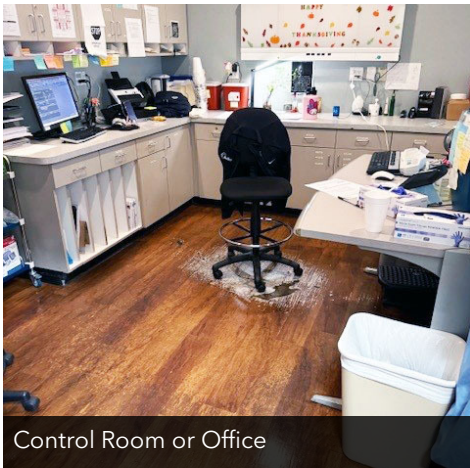
Large Lobby or Waiting Area



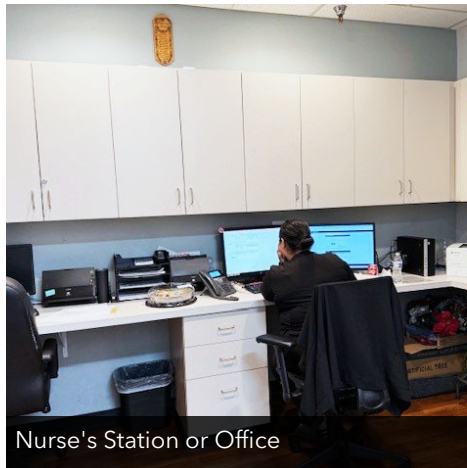
Front Desk Reception



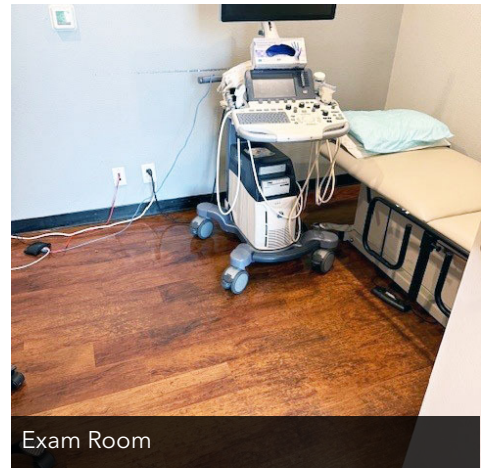
Control Room



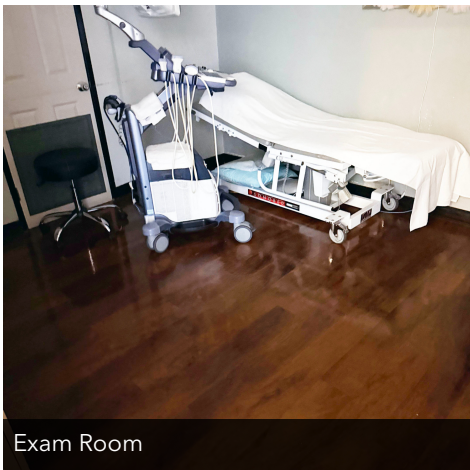
Control Room or Office



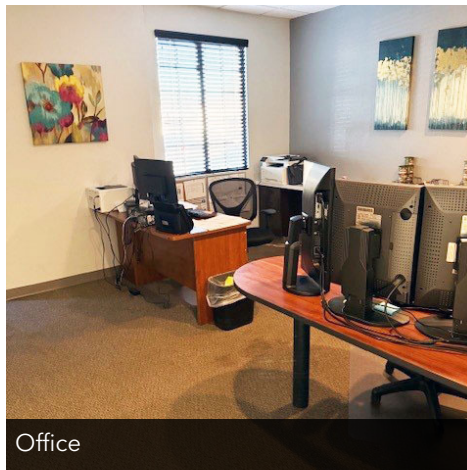
Nurse's Station or Office



Exam Room



Exam Room



Office



Changing Rooms

CBCWORLDWIDE.COM

Marta Ward Blodgett
310 493 0580
mward@cbclyle.net
CalDRE #01309501

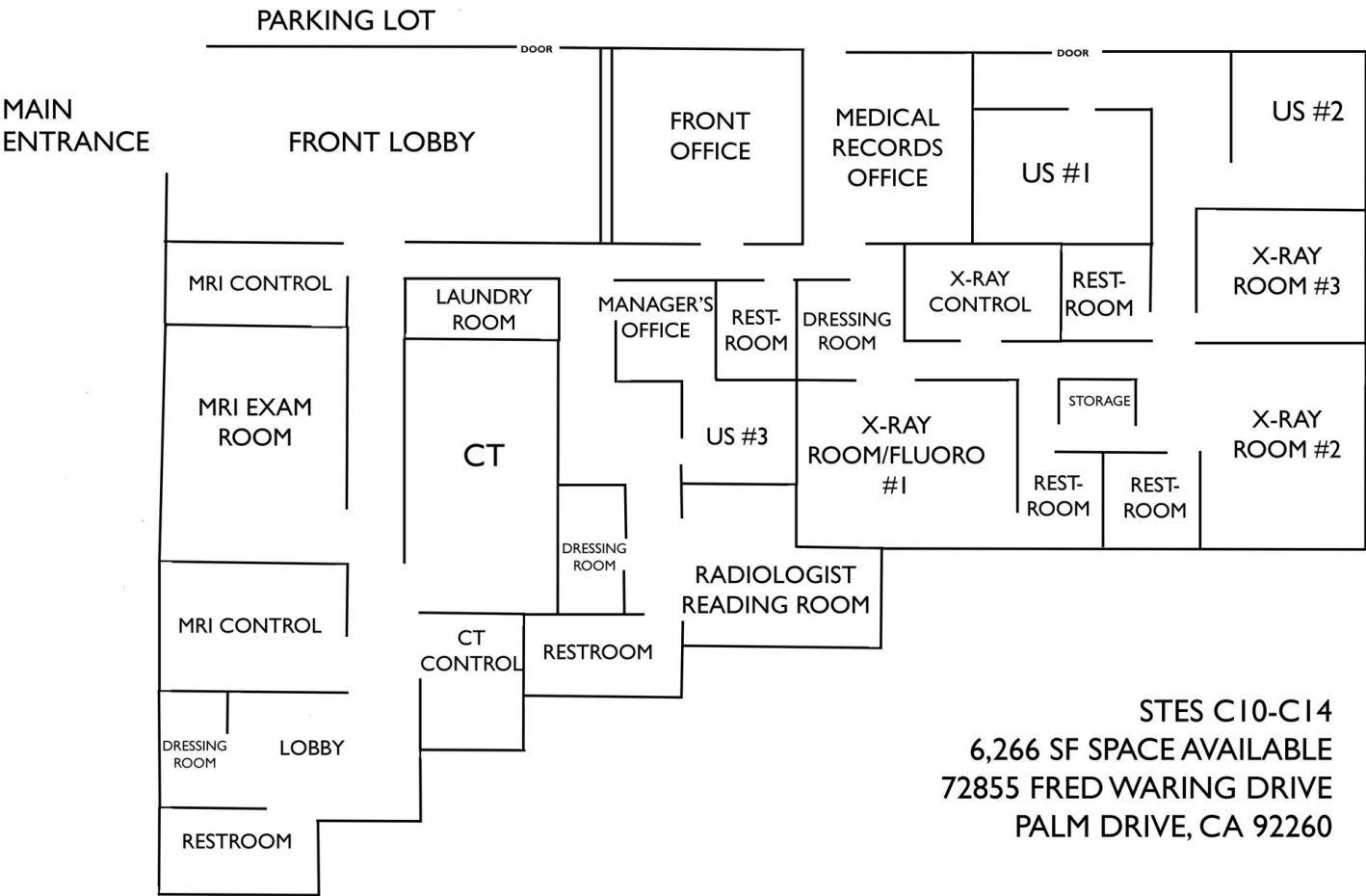
 **COLDWELL
BANKER
COMMERCIAL**
LYLE & ASSOCIATES,
LP



SUITE C10-C14 - 6,266 SF FLOORPLAN

72855 Fred Waring Dr, Palm Desert, CA 92260

LEASE



STES C10-C14
6,266 SF SPACE AVAILABLE
72855 FRED WARING DRIVE
PALM DRIVE, CA 92260

FLOORPLAN NOT TO SCALE - FOR DEMONSTRATION PURPOSES ONLY - RENDERED FROM HANDDRAWN MODEL

CBCWORLDWIDE.COM

Marta Ward Blodgett
310 493 0580
mward@cbclyle.net
CalDRE #01309501

**COLDWELL
BANKER
COMMERCIAL**
LYLE & ASSOCIATES,
LP



RETAILER MAP

72855 Fred Waring Dr, Palm Desert, CA 92260

LEASE



CBCWORLDWIDE.COM

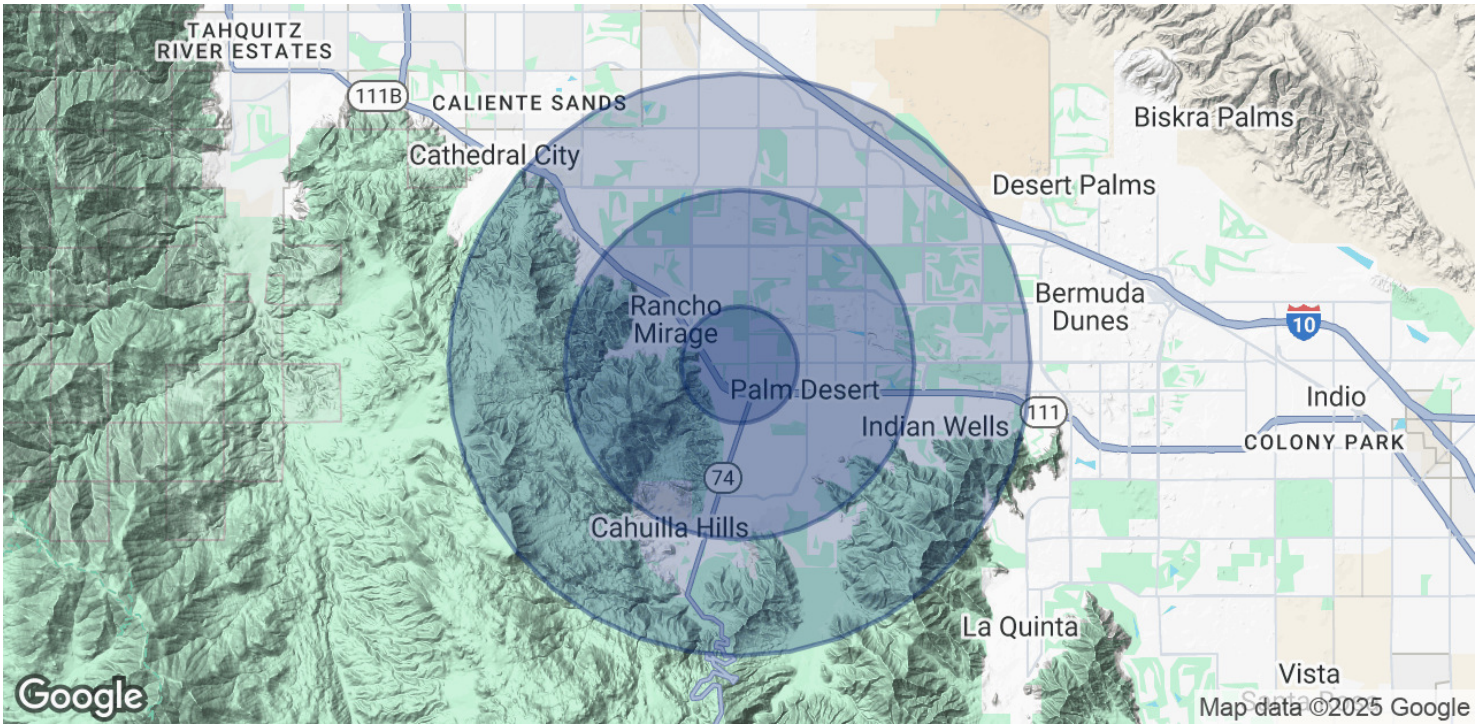
Marta Ward Blodgett
310 493 0580
mward@cbclyle.net
CalDRE #01309501

COLDWELL BANKER COMMERCIAL
LYLE & ASSOCIATES, LP



DEMOGRAPHICS MAP

72855 Fred Waring Dr, Palm Desert, CA 92260



| POPULATION | 1 MILE | 3 MILES | 5 MILES |
|----------------------|-----------|-----------|-----------|
| Total Population | 6,776 | 41,028 | 69,481 |
| Average age | 45.2 | 51.5 | 55.6 |
| Average age (Male) | 41.8 | 49.9 | 54.6 |
| Average age (Female) | 46.7 | 52.4 | 56.2 |
| HOUSEHOLDS & INCOME | 1 MILE | 3 MILES | 5 MILES |
| Total households | 3,273 | 19,695 | 33,807 |
| # of persons per HH | 2.1 | 2.1 | 2.1 |
| Average HH income | \$71,313 | \$93,245 | \$105,588 |
| Average house value | \$422,689 | \$460,346 | \$499,893 |

* Demographic data derived from 2020 ACS - US Census

CBCWORLDWIDE.COM

Marta Ward Blodgett
310 493 0580
mward@cbclyle.net
CalDRE #01309501



CONTACT

72855 Fred Waring Dr, Palm Desert, CA 92260

LEASE



MARTA WARD BLODGETT

Executive Vice President

Direct: 310.493.0580 **Cell:** 310.493.0580
mward@cbclyle.net

CalDRE #01309501

CBCWORLDWIDE.COM

Marta Ward Blodgett
310 493 0580
mward@cbclyle.net
CalDRE #01309501

 **COLDWELL
BANKER
COMMERCIAL**
LYLE & ASSOCIATES,
LP