

**One Suite Remaining  
1,560 RSF**

**FOR LEASE**  
**355 Union Blvd.**  
**Lakewood CO 80228**

**Office**  
**Medical**



### **BUILDING HIGHLIGHTS**

- EXCELLENT LOCATION ON UNION BLVD. WITH EASY ACCESS TO 6TH AVE.
- 15 MINUTES FROM DOWNTOWN/EVERGREEN GENESEE
- SHORT WALK TO FEDERAL CENTER LIGHT RAIL STATION
- CLOSE PROXIMITY TO ST. ANTHONY HOSPITAL
- NUMEROUS RESTAURANTS AND HOTELS WITHIN WALKING DISTANCE
- OPEN 3 STORY ATRIUM WITH ABUNDANT NATURAL LIGHT

### **BUILDING SPECIFICATIONS**

**SIZE-** 44,000 RSF

**YOC-**1987

**RENOVATED-** 2013

**FLOOR PLATE-** 13,362 RSF

**STORIES-** 4

**PARKING-** 148 SURFACE SPACES

**CURRENT MEDICAL TENANTS INCLUDE:**

SURGERY CENTER

GASTROENTEROLOGY

NEPHROLOGY

IMAGING

DERMATOLOGY

PEDIATRICS

PHYSICAL THERAPY

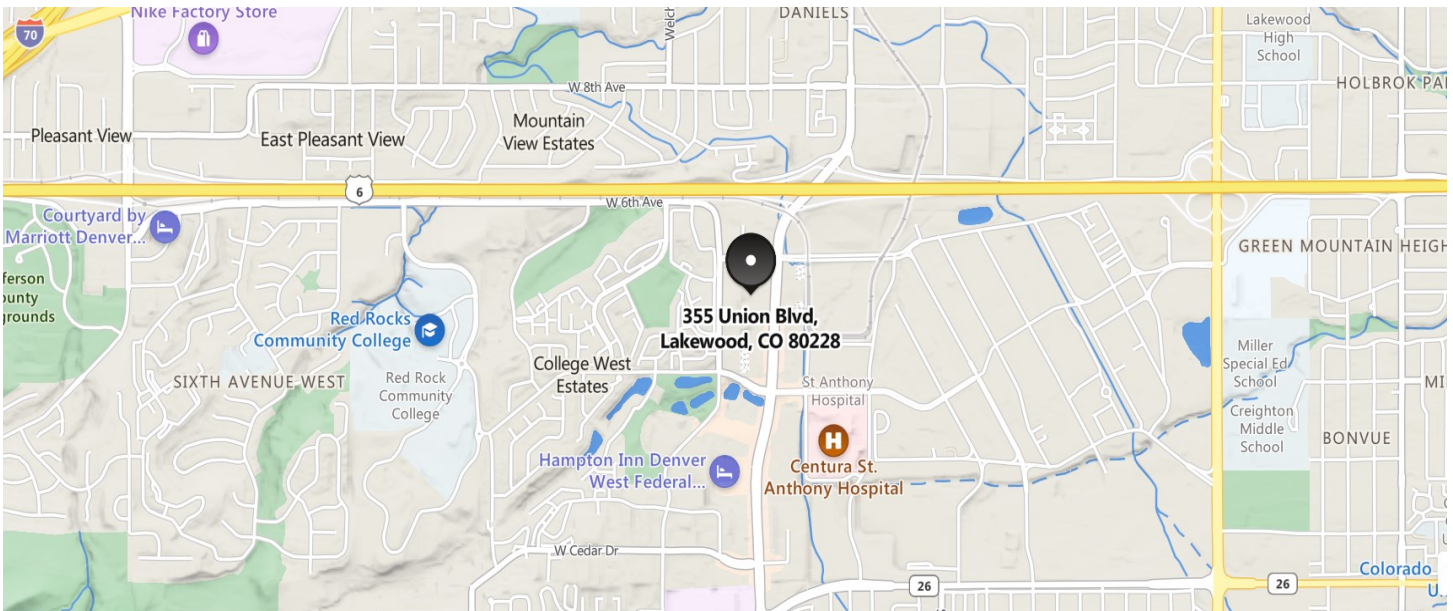
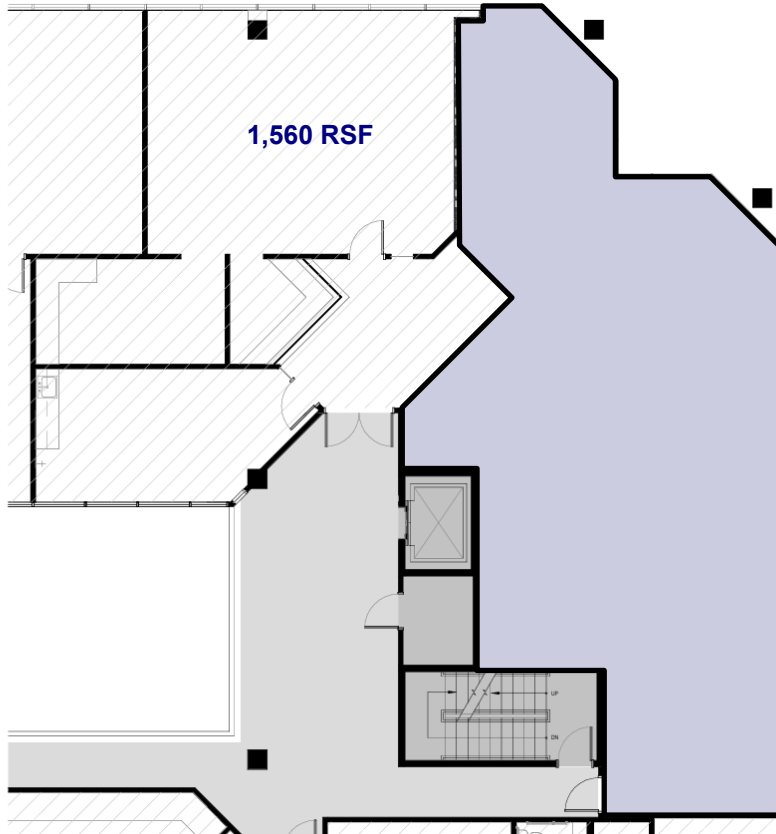
OPHTHALMOLOGY

**Matt Zeman**  
mattzeman@zemanrealty.com  
C: 303.908.1035



**Chuck Zeman**  
chuckzeman@zemanrealty.com  
C: 303.905.1569

# Suite 255– 1,560 RSF



**Matt Zeman**  
mattzeman@zemanrealty.com  
C: 303.908.1035



**Chuck Zeman**  
chuckzeman@zemanrealty.com  
C: 303.905.1569