



# The Doctor's Building at Overland Park Regional

10550 Quivira Road, Overland Park, KS 66215

**RJ Trowbridge**  
Executive Vice President  
+1 913 469 4637  
[rj.trowbridge@jll.com](mailto:rj.trowbridge@jll.com)

**Avery Comeau**  
Associate  
+1 913 927 9252  
[avery.comeau@jll.com](mailto:avery.comeau@jll.com)



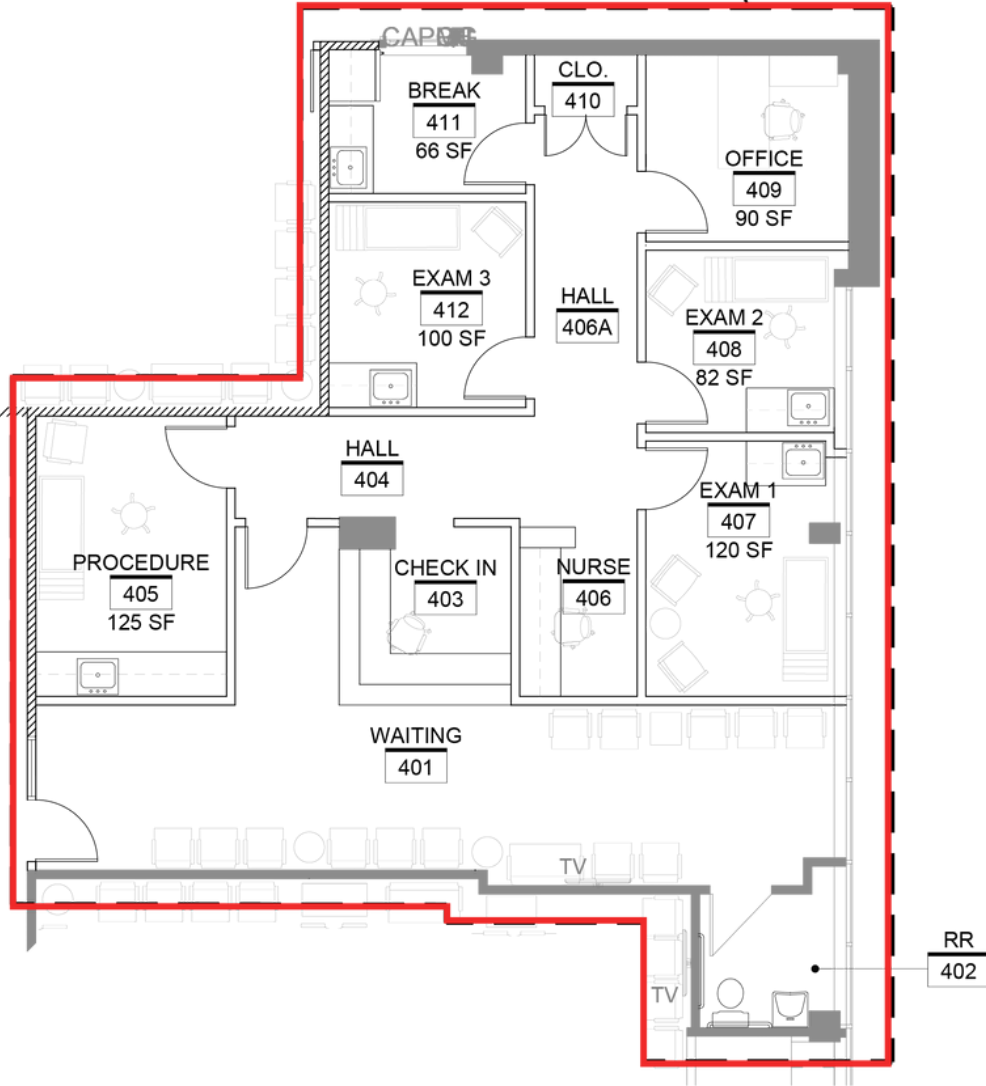
## Property Details

- On-campus medical office building
- Newly available, fully built out medical office suites
- Tenant improvement allowance available
- Centrally located in Johnson County with easy access to the I-435 corridor
- Surrounding retail amenities include Oak Park Mall, Target & Price Chopper
- Landlord has recently completed capital improvements including new roof, new sprinkler system and updated common areas.

# 4th Floor Spec Suite A

1,577 RSF available

\$32.00/SF Gross



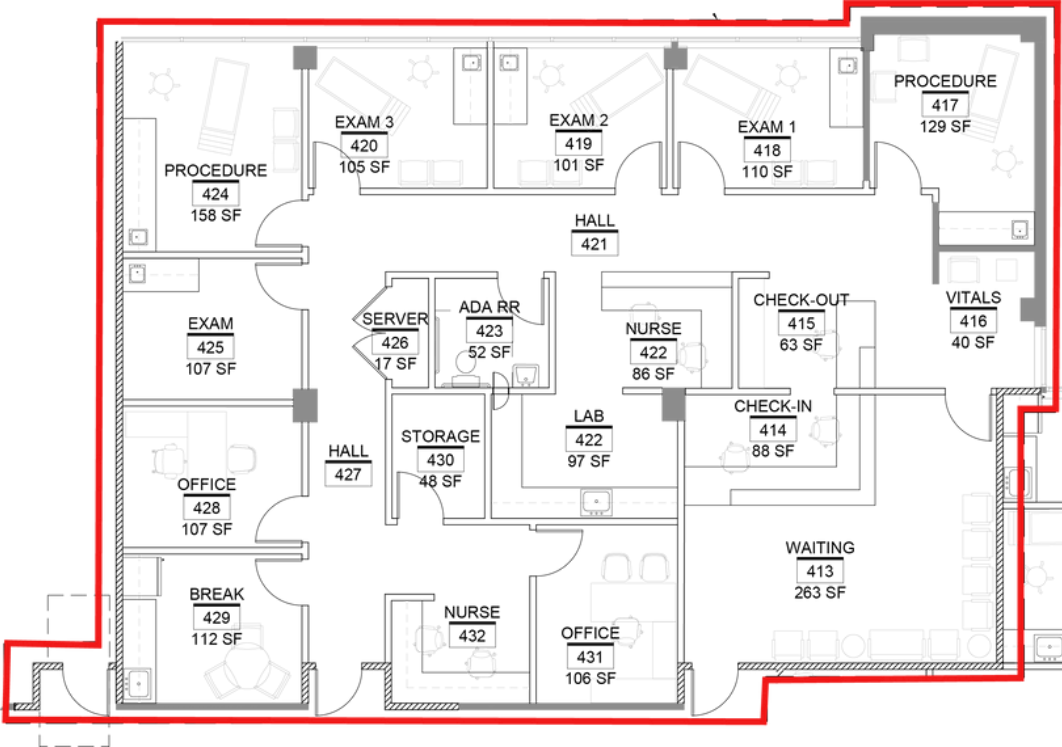
# Photos



# 4th Floor Spec Suite B

2,790 RSF available

\$32.00/SF Gross

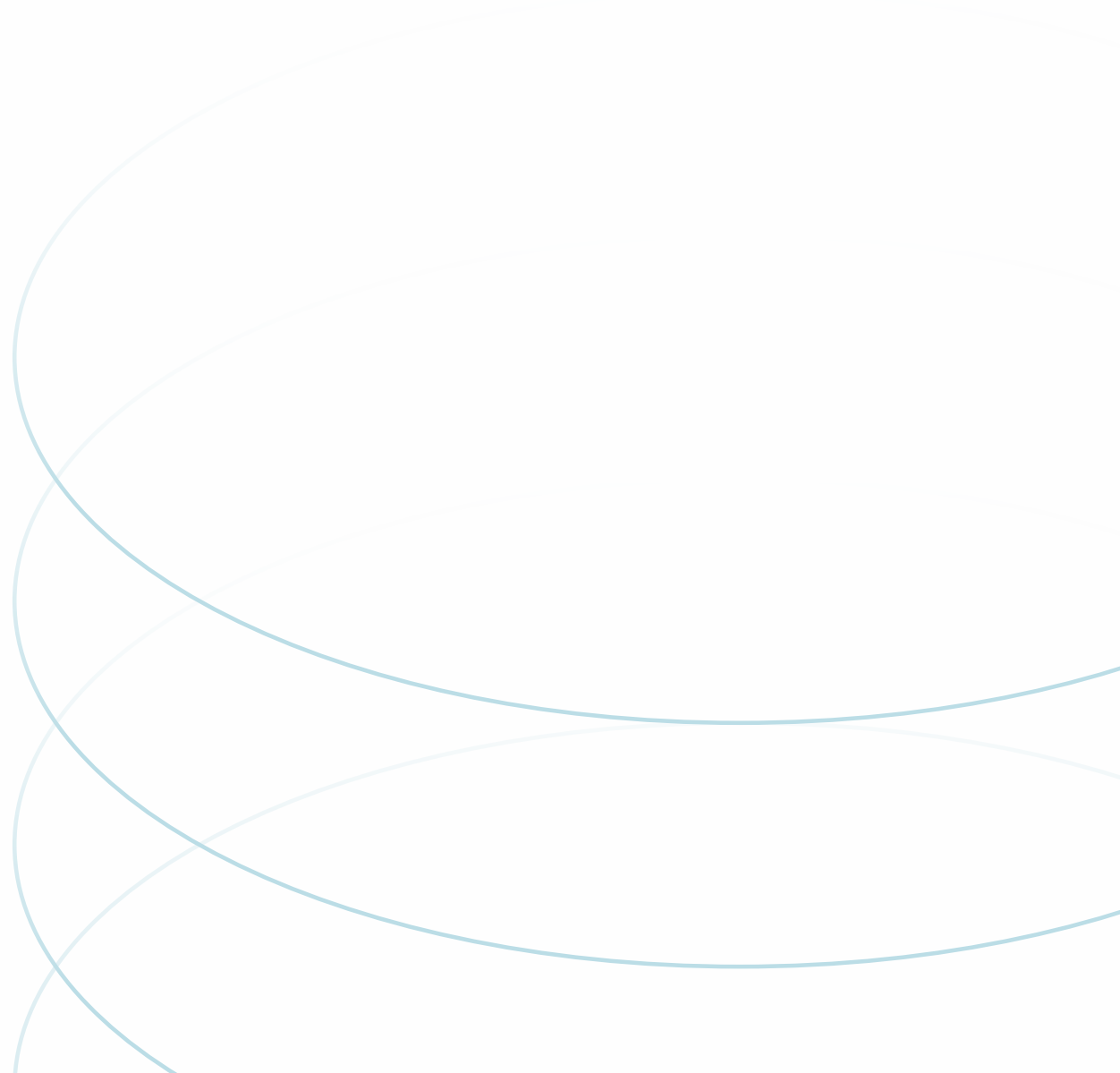


# Photos



# Location





**RJ Trowbridge**  
Executive Vice President  
+1 913 469 4637  
[rj.trowbridge@jll.com](mailto:rj.trowbridge@jll.com)

**Avery Comeau**  
Associate  
+1 913 927 9252  
[avery.comeau@jll.com](mailto:avery.comeau@jll.com)