

FOR LEASE

LANDMARK COMMERCE CENTER

1100 N Florida Mango Road, West Palm Beach, FL



Space Available

Suite Number	Square Footage	Lease Rate
Suite F	1,440 SF	\$18.95 NNN \$5.94 OpEx

Property Highlights

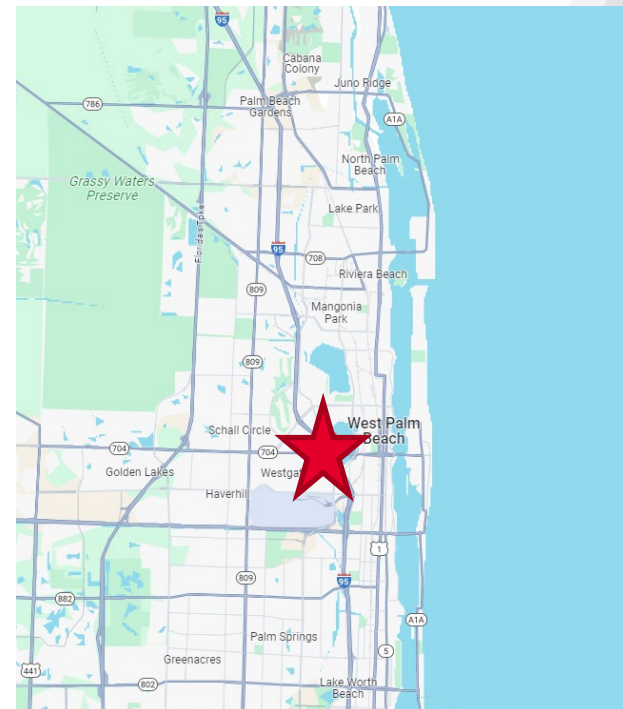
- Built in 1984
- 16' clear ceiling height
- 1 restroom
- ±400 SF of office
- 1 grade level door
- Located less than a mile from I-95, 2 miles from Palm Beach International Airport, and 2.5 miles from Downtown West Palm Beach.

Contact

Christopher Thomson, SIOR
Vice Chairman
+1 561 227 2019
Christopher.thomson@cushwake.com

Eric Cantor
Brokerage Specialist
+1 561 227 2068
Eric.cantor@cushwake.com

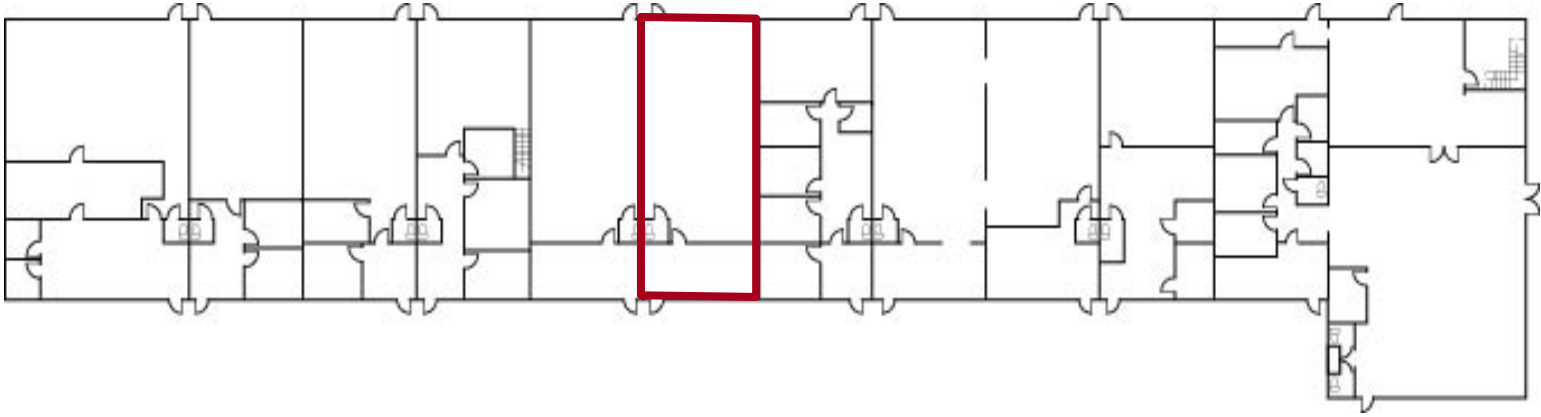
Nick Reid
Brokerage Specialist
+1 561 227 4516
Nicolas.reid@cushwake.com



FOR LEASE

LANDMARK COMMERCE CENTER

1100 N Florida Mango Road, West Palm Beach, FL



Contact

Christopher Thomson, SIOR
Vice Chairman
+1 561 3012390
Christopher.thomson@cushwake.com

Eric Cantor
Brokerage Specialist
+1 561 227 2068
Eric.cantor@cushwake.com

Nick Reid
Brokerage Specialist
+1 561 227 4516
Nicolas.reid@cushwake.com