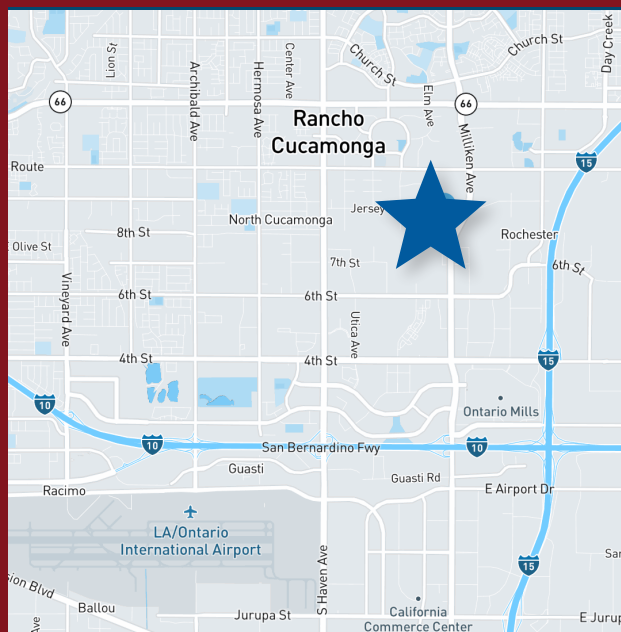


FOR LEASE
± 29,796 SF ON 4.52 ACRES

CBRE



11266 JERSEY BOULEVARD, RANCHO CUCAMONGA, CA 91730



**UNIQUE BUILDING WITH LARGE YARD
SUITABLE FOR A VARIETY USES**

For more information, please contact:

WALT ARRINGTON, SIOR
Senior Vice President
+1 909 418 2154
walt.arrington@cbre.com
Lic. 00859109

CONNOR IM
Associate
+1 909 912 0020
cim@daumcommercial.com
Lic. 02078699

Another project by

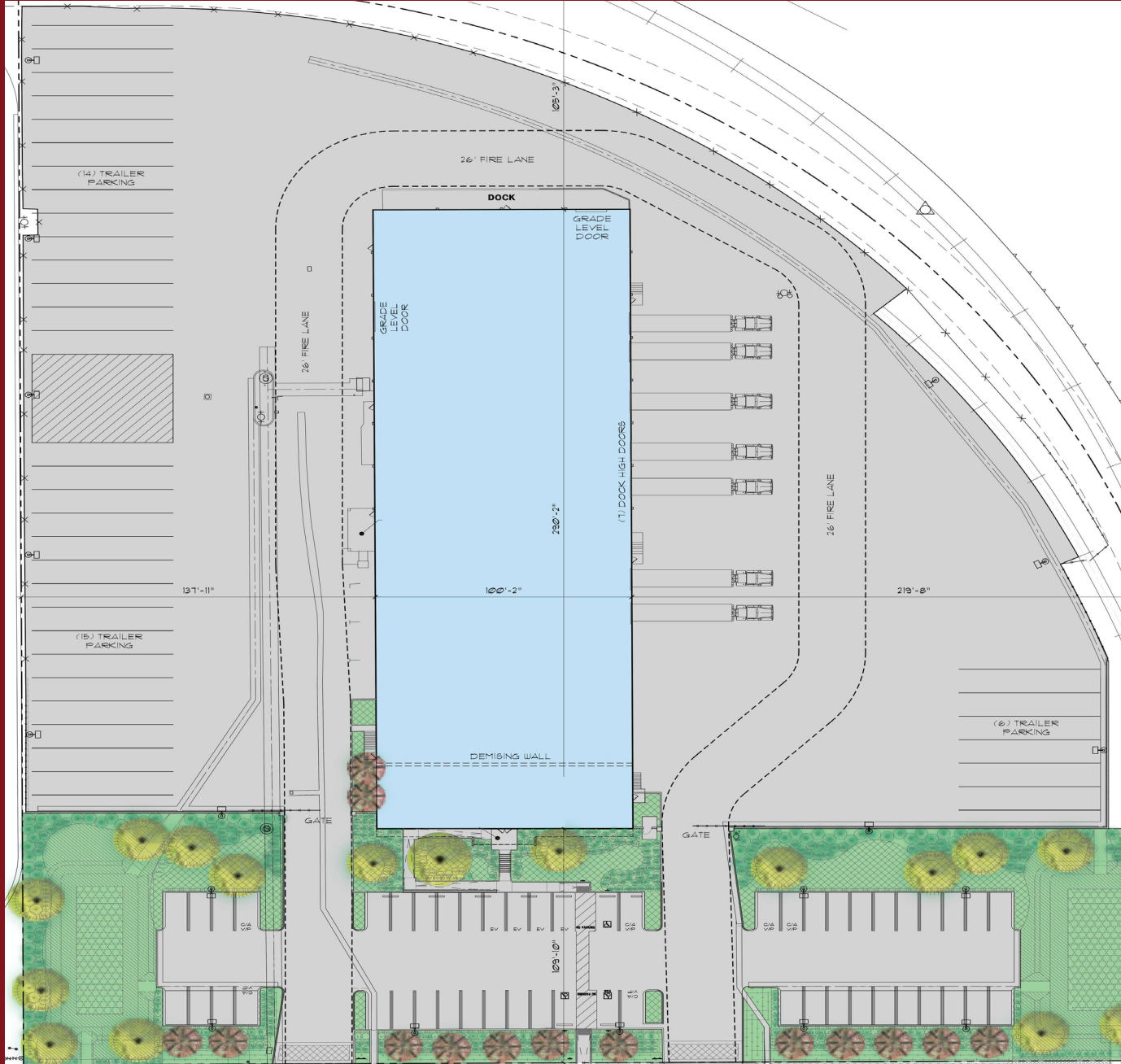


DEDEAUX
PROPERTIES

11266 JERSEY BOULEVARD, RANCHO CUCAMONGA, CA

PROPERTY FEATURES

- // ±4.52 Acre Lot
- // ±3,031 SF Office
- // Fully Secured Lighted Yard Area
- // 38 Trailer Parking Stalls
- // 51 Car Parking Stalls
- // Excellent Freeway Access
- // 2 Ground Level Loading Doors
- // 7 Dock High Loading Doors
- // 22' Minimum Clear Height
- // Fully Sprinklered
- // 800 Amps Power



© 2023 CBRE, Inc. All rights reserved. This information has been obtained from sources believed reliable, but has not been verified for accuracy or completeness. You should conduct a careful, independent investigation of the property and verify all information. Any reliance on this information is solely at your own risk. CBRE and the CBRE logo are service marks of CBRE, Inc. All other marks displayed on this document are the property of their respective owners. Photos herein are the property of their respective owners. Use of these images without the express written consent of the owner is prohibited.