

INDUSTRIAL BUILDING & LAND FOR SALE

SMALL SECTION OF PROPERTY LOCATED IN THE CITY OF MILWAUKEE

4301 N Richards Street
Glendale, WI 53212



Brian Parrish, MBA
President & CEO
brian@paradigmre.com

Matt Friedman
Vice President & Partner
matt@paradigmre.com

11801 W. Silver Spring Dr.
Suite 100
Milwaukee, WI 53225

262-717-5151

paradigmre.com



OFFERING SUMMARY

ADDRESS	4301 N Richards Street Glendale, WI 53212
BUILDING SIZE	64,230 SF
OFFICE SIZE	6,230 SF
WAREHOUSE SIZE	58,000 SF
LOT SIZE	4.88 acres
YEAR BUILT	1952 / 1955
ZONING	IL- 2

**FINANCIAL SUMMARY**

OFFERING PRICE	\$1,200,000
PRICE PSF	\$18.68

- Priced below assessment!
- Guard shack at entrance and small storage building (excluded from square footage totals).
- New windows throughout facility – ample natural light.
- Lower level storage excluded from building total.
- Stanley alarm system and motion detectors.
- Functional floor drains, electric bus bars, vents and fans, compressor and airlines throughout facility.
- A portion of the property is located in the City of Milwaukee (majority in Glendale).
- Convenient access to I-43 via Capitol Dr. or Hampton Ave.

We obtained the following information from sources we believe to be reliable. However, we have not verified its accuracy and make no guarantee, warranty or representation about it.

PROPERTY FEATURES

PARKING	Huge lot – asphalt and excess land, fully fenced
CLEAR HEIGHT	12' - 14'
LOADING	(1) One drive-in and (9) Nine docks (exterior)
COLUMN SPACING	40' x 60' and 25' x 30'
RESTROOMS	(6) Six bathrooms with large capacity

TAX INFO

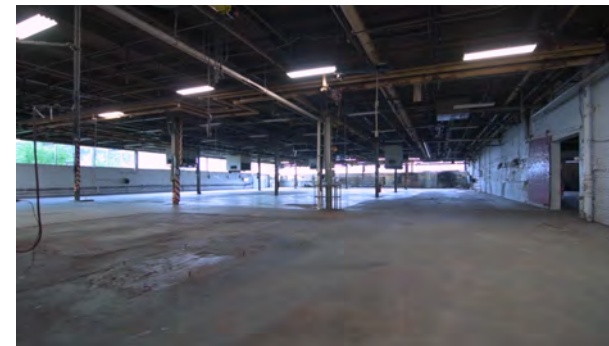
TAX KEY NUMBERS	2420201000, 2331180000, 2331181000
2019 TAXES	\$44,821.41
2019 ASSESSMENT	\$1,557,000

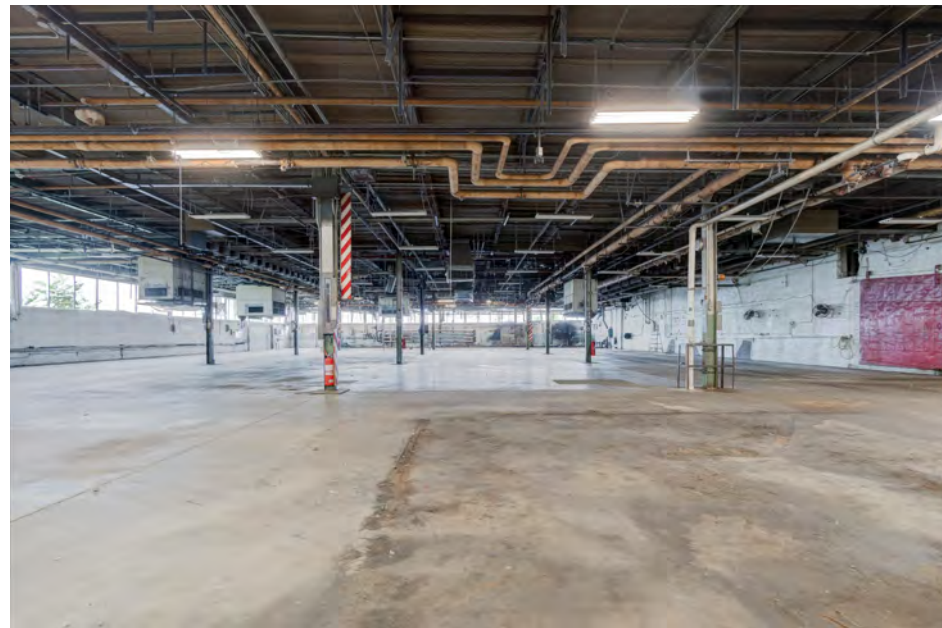
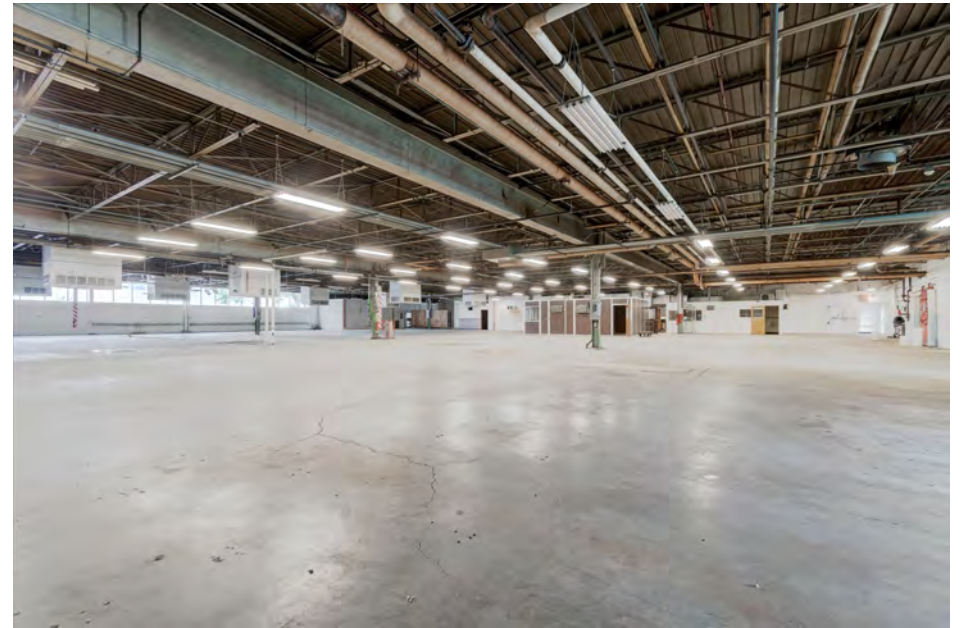
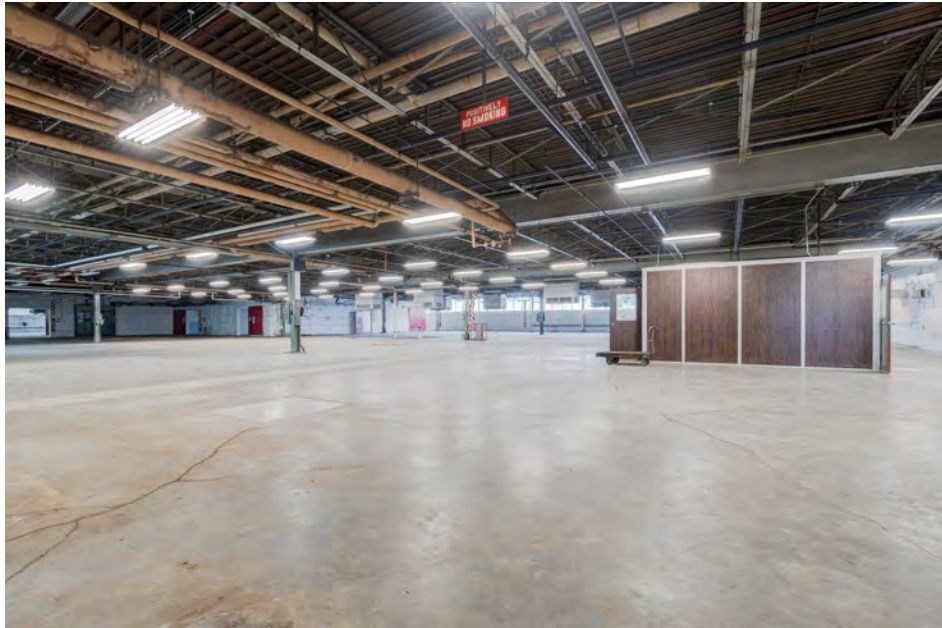
MECHANICAL

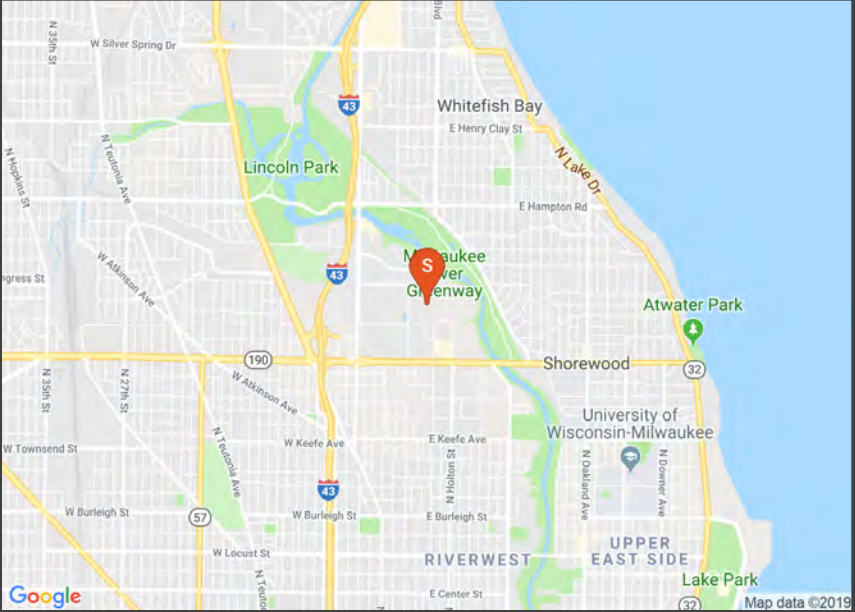
HVAC	Air conditioning (office only) & Boiler System (newer)
SPRINKLERS	Yes - wet system
ELECTRICAL / POWER	3 Phase, 480 volt, 2,000 amp (TBV)
LIGHTING	Fluorescent

CONSTRUCTION

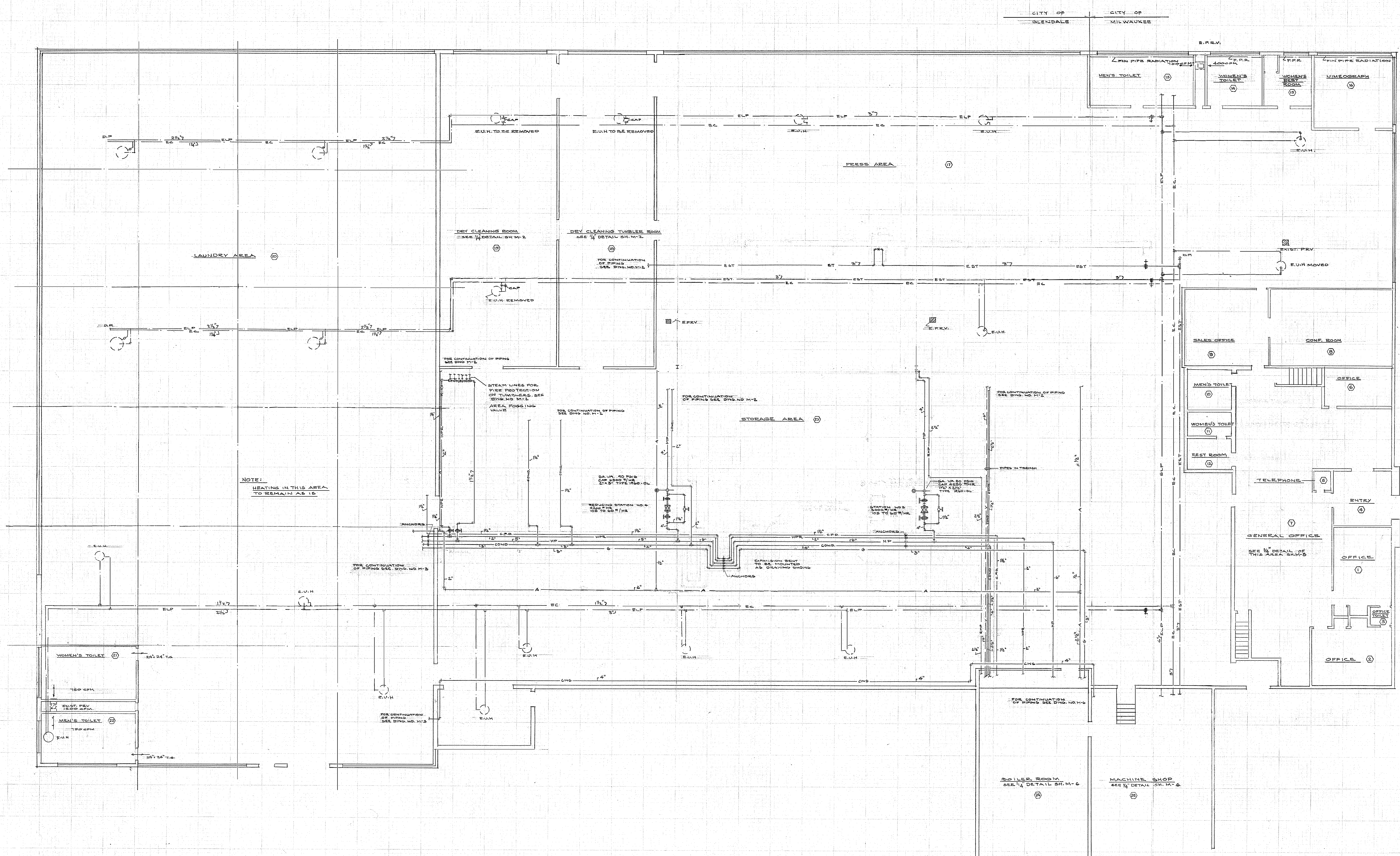
FOUNDATION	Brick and Masonry
ROOF	Mixed





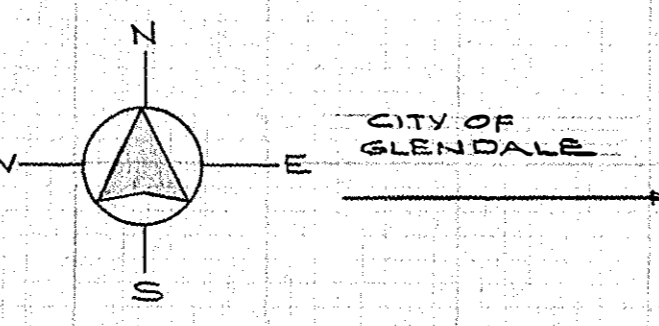
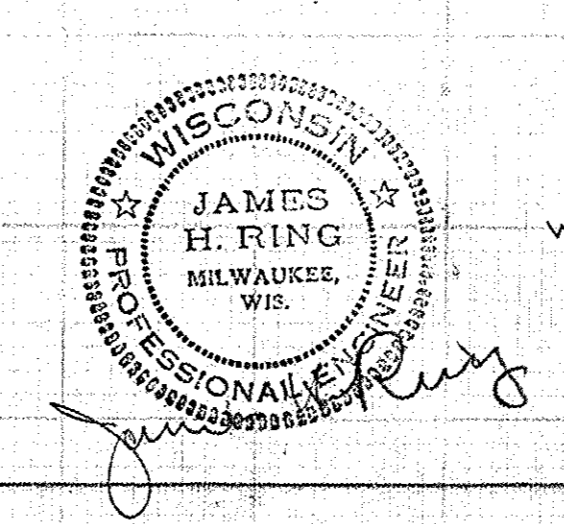


Map data ©2019



FIRST FLOOR PLAN

SCALE: 1/8" = 1'-0"



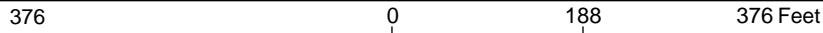
REMODELING OF
LAUNDRY AND DRY CLEANING
BUILDING FOR
SPIC and SPAN Inc.
4301 NORTH RICHARDS ST
GLENDALE, WISCONSIN

DATE: 1-31-62
APPROVED: M-1

RING & DUCHATEAU, INC.
MECHANICAL CONSULTANTS
MILWAUKEE, WISCONSIN



MILWAUKEE COUNTY INTERACTIVE MAPPING SERVICE



NAD_1983_2011_StatePlane_Wisconsin_South_FIPS_4803_Ft_ 1: 2,257
©M/CAMLIS



DISCLAIMER: This map is a user generated static output from the Milwaukee County Land Information Office Interactive Mapping Service website. The contents herein are for reference purposes only and may or may not be accurate, current or otherwise reliable. No liability is assumed for the data delineated herein either expressed or implied by Milwaukee County or its employees.

THIS MAP IS NOT TO BE USED FOR NAVIGATION

Notes



DISCLOSURE TO NON-RESIDENTIAL CUSTOMERS

1 Prior to negotiating on your behalf the brokerage firm, or an agent associated with the firm, must provide you the
2 following disclosure statement:

3 **DISCLOSURE TO CUSTOMERS** You are a customer of the brokerage firm (hereinafter Firm). The Firm is either an agent
4 of another party in the transaction or a subagent of another firm that is the agent of another party in the transaction. A
5 broker or a salesperson acting on behalf of the Firm may provide brokerage services to you. Whenever the Firm is
6 providing brokerage services to you, the Firm and its brokers and salespersons (hereinafter Agents) owe you, the
7 customer, the following duties:

8 (a) The duty to provide brokerage services to you fairly and honestly.
9 (b) The duty to exercise reasonable skill and care in providing brokerage services to you.
10 (c) The duty to provide you with accurate information about market conditions within a reasonable time if you request
11 it, unless disclosure of the information is prohibited by law.
12 (d) The duty to disclose to you in writing certain Material Adverse Facts about a property, unless disclosure of the
13 information is prohibited by law (see lines 42-51).
14 (e) The duty to protect your confidentiality. Unless the law requires it, the Firm and its Agents will not disclose your
15 confidential information or the confidential information of other parties (see lines 23-41).
16 (f) The duty to safeguard trust funds and other property held by the Firm or its Agents.
17 (g) The duty, when negotiating, to present contract proposals in an objective and unbiased manner and disclose the
18 advantages and disadvantages of the proposals.

19 Please review this information carefully. An Agent of the Firm can answer your questions about brokerage services,
20 but if you need legal advice, tax advice, or a professional home inspection, contact an attorney, tax advisor, or home
21 inspector. This disclosure is required by section 452.135 of the Wisconsin statutes and is for information only. It is a
22 plain-language summary of the duties owed to a customer under section 452.133(1) of the Wisconsin statutes.

23 **CONFIDENTIALITY NOTICE TO CUSTOMERS** The Firm and its Agents will keep confidential any information given to the
24 Firm or its Agents in confidence, or any information obtained by the Firm and its Agents that a reasonable person
25 would want to be kept confidential, unless the information must be disclosed by law or you authorize the Firm to
26 disclose particular information. The Firm and its Agents shall continue to keep the information confidential after the
27 Firm is no longer providing brokerage services to you.

28 The following information is required to be disclosed by law:

29 1. Material Adverse Facts, as defined in Wis. Stat. § 452.01(5g) (see lines 42-51).

30 2. Any facts known by the Firm or its Agents that contradict any information included in a written inspection
31 report on the property or real estate that is the subject of the transaction.

32 To ensure that the Firm and its Agents are aware of what specific information you consider confidential, you may
33 list that information below (see lines 35-41) or provide that information to the Firm or its Agents by other means. At a
34 later time, you may also provide the Firm or its Agents with other Information you consider to be confidential.

35 **CONFIDENTIAL INFORMATION:** _____
36 _____
37 _____

38 **NON-CONFIDENTIAL INFORMATION** (the following information may be disclosed by the Firm and its Agents): _____
39 _____
40 _____

41 _____ *(Insert information you authorize to be disclosed, such as financial qualification information.)*

DEFINITION OF MATERIAL ADVERSE FACTS

43 A "Material Adverse Fact" is defined in Wis. Stat. § 452.01(5g) as an Adverse Fact that a party indicates is of such
44 significance, or that is generally recognized by a competent licensee as being of such significance to a reasonable
45 party, that it affects or would affect the party's decision to enter into a contract or agreement concerning a transaction
46 or affects or would affect the party's decision about the terms of such a contract or agreement.

47 An "Adverse Fact" is defined in Wis. Stat. § 452.01(1e) as a condition or occurrence that a competent licensee
48 generally recognizes will significantly and adversely affect the value of the property, significantly reduce the structural
49 integrity of improvements to real estate, or present a significant health risk to occupants of the property; or information
50 that indicates that a party to a transaction is not able to or does not intend to meet his or her obligations under a
51 contract or agreement made concerning the transaction.

52 **NOTICE ABOUT SEX OFFENDER REGISTRY** You may obtain information about the sex offender registry and persons
53 registered with the registry by contacting the Wisconsin Department of Corrections on the internet at
54 <http://www.doc.wi.gov> or by telephone at 608-240-5830.

No representation is made as to the legal validity of any provision or the adequacy of any provision in any specific transaction.
Copyright © 2016 by Wisconsin REALTORS® Association
Drafted by Attorney Debra Peterson Conrad



Industrial Building & Land for Sale

Brian Parrish, MBA
President & CEO
brian@paradigmre.com

262-717-5151

Matt Friedman
Vice President & Partner
matt@paradigmre.com

paradigmre.com

11801 W. Silver Spring Dr.
Suite 100
Milwaukee, WI 53225

