

# THE SALLY 5085 N BROADWAY

uptown / chicago, il



MID-AMERICA® URBAN

AVAILABLE IMMEDIATELY



FLATS

# THE SALLY

## 5085 N BROADWAY

uptown / chicago, il

### SPACE DETAILS

### ADDRESS

5085 N Broadway  
Chicago, Illinois

### NEIGHBORING RETAILERS



lao sze chuan



### AVAILABILITY

± 5,755 SF  
(Divisible)

### FEATURES

Located on the SEC of Broadway and Winona at the base of The Sally - 180 unit residential building

Warm dark shell space with flexible demising options

Black-iron capable

Located within one block of the Argyle CTA stop (Annual Riders - 834,807)

Within a block of a public parking structure

Well-capitalized Landlord that is willing to assist with the cost of buildout

### DEMOGRAPHICS

	.5M	1M	1.5M
POPULATION	27,793	78,317	131,503
HOUSEHOLDS	16,703	44,991	74,173
AVG HOUSEHOLD INCOME	\$96,447	\$104,586	\$112,692
DAYTIME POPULATION	19,824	57,520	94,724

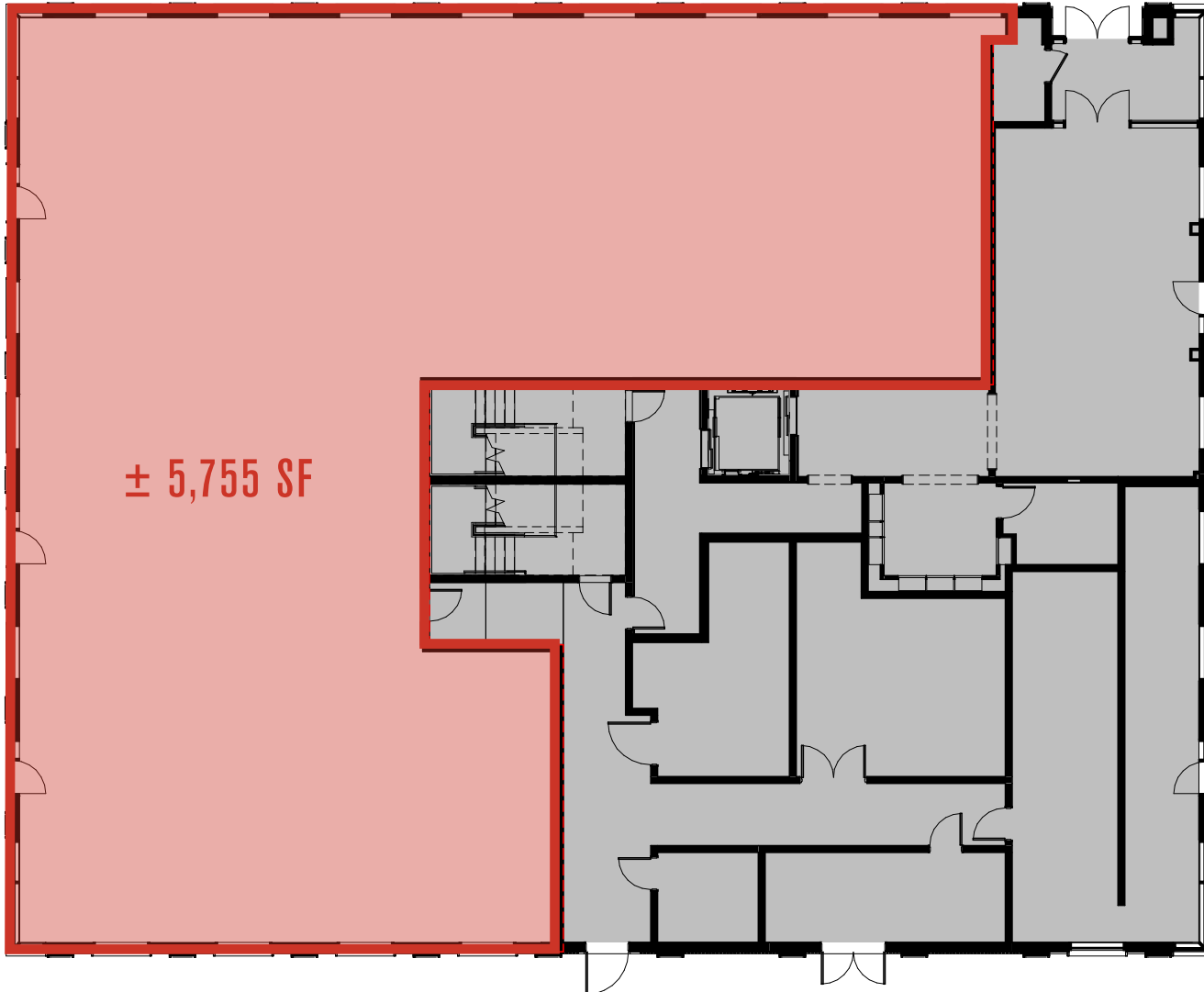
# THE SALLY 5085 N BROADWAY

uptown / chicago, il

SITE PLAN

NORTH BROADWAY

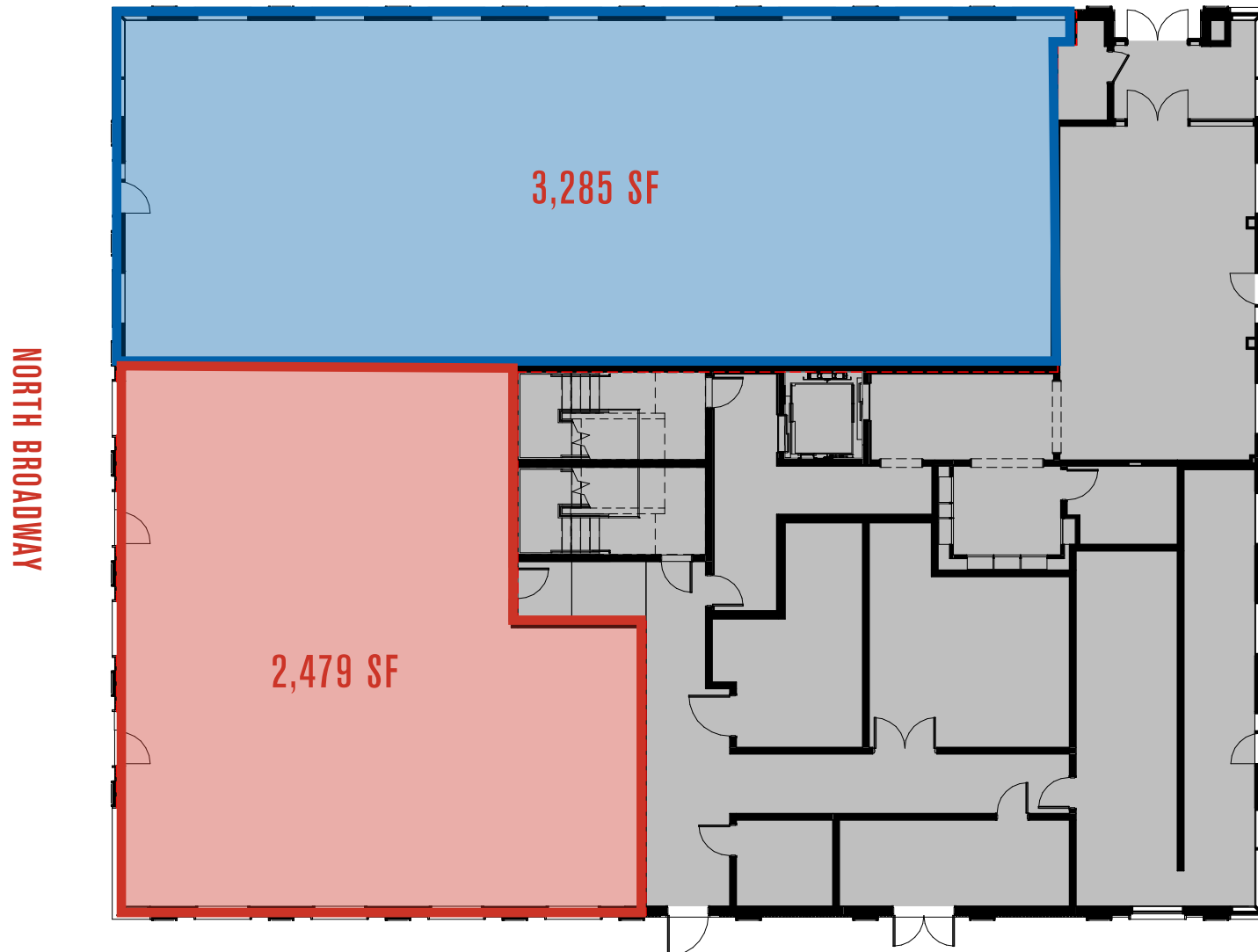
± 5,755 SF



# THE SALLY 5085 N BROADWAY

uptown / chicago, il

## DEMISED SITE PLAN





# THE SALLY 5085 N BROADWAY

uptown / chicago, il

## TRADE AREA MAP





let's talk. **BIG**

**IDEAS?**

**PAUL BRYANT**

Mid-America Real Estate Corporation  
630.954.7354  
PBryant@MidAmericaGrp.com

**WESTIN KANE**

Mid-America Real Estate Corporation  
630.954.7447  
WKane@MidAmericaGrp.com

**RYAN HICKS**

Mid-America Real Estate Corporation  
630.954.7326  
RHicks@MidAmericaGrp.com



**MID-AMERICA<sup>®</sup> URBAN**