

COMMERCIAL / DEVELOPMENT LAND FOR SALE

TWENTY MILE RD. DEVELOPMENT LAND

10112 TWENTY MILE RD., PARKER, CO 80134



PROPERTY FEATURES

- Build Ready Flex Land in the Town of Parker
- Site Approved for 44,202 SF Light Industrial Building
- Prime for Multi-Tenant Light Industrial Building, Warehouse & Distribution, Recreational, Athletic & Assembly
- Infill Development Opportunity
- Wide Range of Commercial Uses Permitted
- Great Connection to Lincoln Ave., Parker Rd., E-470 & I-25
- Located near Strong Retail Corner Including Lowe's, Vehicle Vault, Discount Tire, Mt. Fuji Hibachi & Sushi Bar, Jiffy Lube, The Salvation Army, Guidepost Montessori and the Parker Police Station

PROPERTY DETAILS

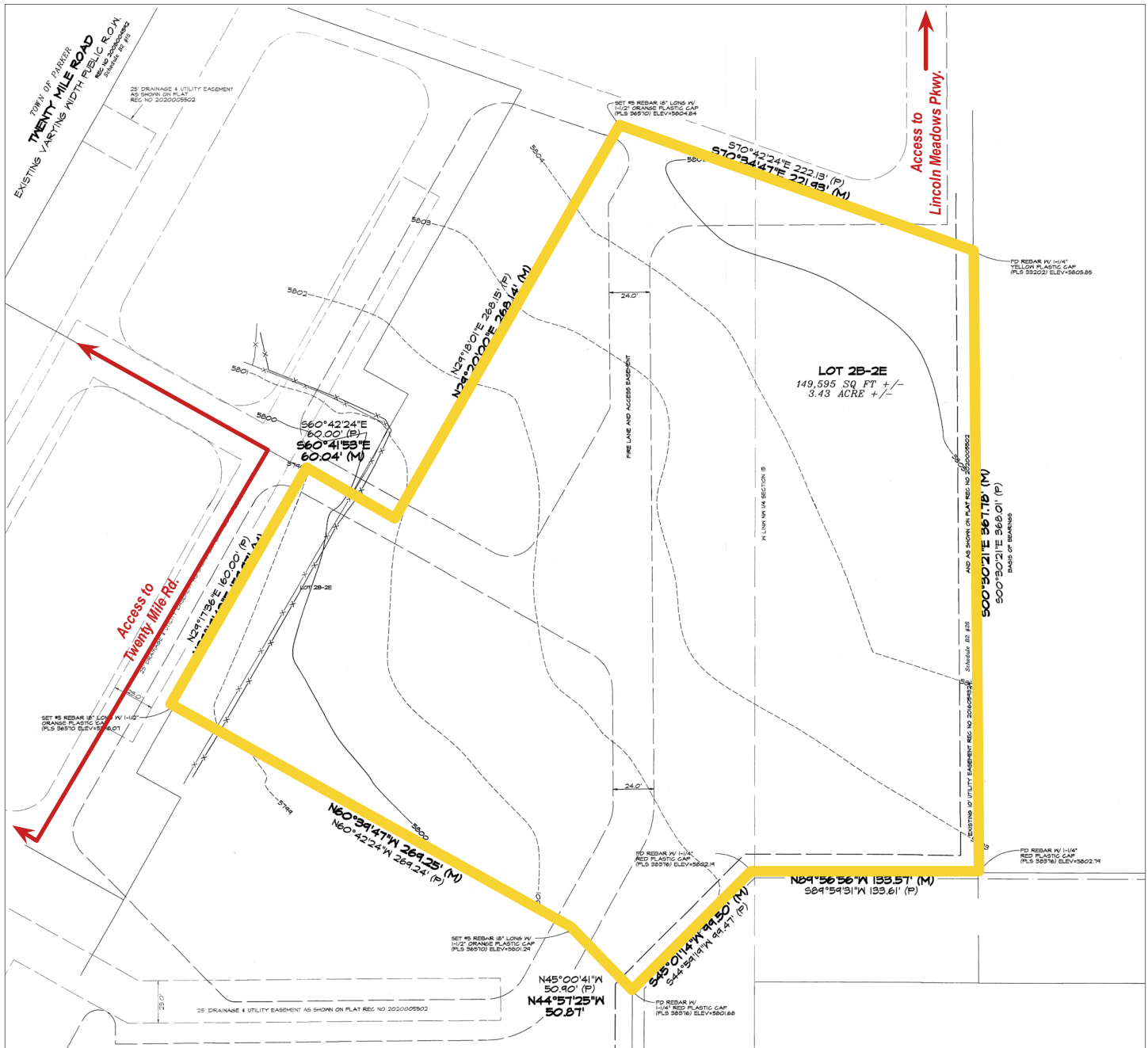
LAND SIZE	3.437 Acres m/l
SALE PRICE	\$1,800,000.00 (\$12/SF)
TAXES:	\$33,010.00 (2024)
ZONING	Planned Development / Commercial / Flex
WATER / SANITATION	Parker Water & Sanitation District
GAS / ELECTRIC	Xcel / CORE
CITY / COUNTY	Parker / Douglas
ACCESS	Lincoln Avenue, 20 Mile Road, Lincoln Meadows Parkway

TREVEY COMMERCIAL
10510 Dransfeldt Rd, Suite 100
Parker, Colorado 80134
303-841-1400 | www.trevey.com

NICK BEACH
V.P. Sales & Leasing
nbeach@trevey.com
C: 719-237-0880

MITCH TREVEY
Managing Director
mitch@trevey.com
C: 303-619-7192

ALTA SURVEY



2024 DEMOGRAPHICS

Radius	Population	Income	Home Value
2 Mile	40,010	\$117,711	\$412,277
5 Mile	137,322	\$138,503	\$474,741
10 Mile	582,083	\$133,936	\$470,770

PARKER MARKET SERVICE AREA

- Parker, CO consists of two zip codes (80134 & 80138) delivering **±107,434 Residents**.
- 80134 is the **2nd Most Populous Zip Code** in the State of Colorado out of 513 Zip Codes.

TRAFFIC COUNTS

- Vehicles Per Day (VPD)**
- Approx. 31,000 VPD on Lincoln Ave.
 - Approx. 54,000 VPD at Lincoln Ave. & Parker Rd.
 - Approx. 69,000 VPD on Parker Rd.



TREVEY COMMERCIAL
10510 Dransfeldt Rd, Suite 100
Parker, Colorado 80134
303-841-1400 | www.trevey.com

NICK BEACH
V.P. Sales & Leasing
nbeach@trevey.com
C: 719-237-0880

MITCH TREVEY
Managing Director
mitch@trevey.com
C: 303-619-7192

[CLICK HERE TO DOWNLOAD CREC BROKERAGE DISCLOSURE](#)

Information contained herein, while not guaranteed, is from sources believed reliable. Price, terms and information subject to change. Please call to confirm current property status and accuracy of information contained herein.