

15,755 SF - 55,755 SF Industrial Space For Lease

Excellent Location At I-90 Full Interchange

4602- 4608 Interstate Boulevard
Loves Park, IL 61111



Suzanne Serino, SIOR
Vice Chair
+1 847 698 8226
suzanne.serino@colliers.com

Kelly Joyce, CCIM
Vice President
+1 847 698 8276
kelly.joyce@colliers.com



Property Overview

Building Size:	111,002 SF Approximately
Year Built:	2015
Sprinkler System:	Wet
Real Estate Taxes:	\$2.36 PSF
CAM:	\$1.01 PSF
Clear Height	28'
Comments:	Well located at 4-way interchange



Unit 4608

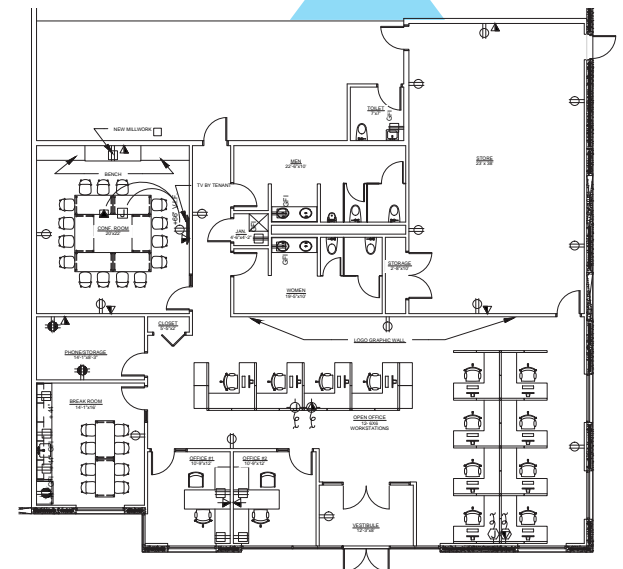
Available SF:	55,755 SF
Office:	15,000 SF (can be reduced)
Loading:	One (1) dock (expandable), two (2) drive-in doors
Power:	1600 amps / 480 volts
Car Parking:	55
Asking Rate:	\$5.95 psf net
Comments:	100% air conditioned Exposure on I-90

Unit 4602

Available SF:	15,755 SF
Office:	3,300 SF
Loading:	Two (2) docks, two (2) drive-in doors
Power:	400 amps / 208 volts
Car Parking	16
Asking Rate:	\$6.25 psf net
Comments:	Second will call entrance 100% air conditioned
Available July 1, 2026	

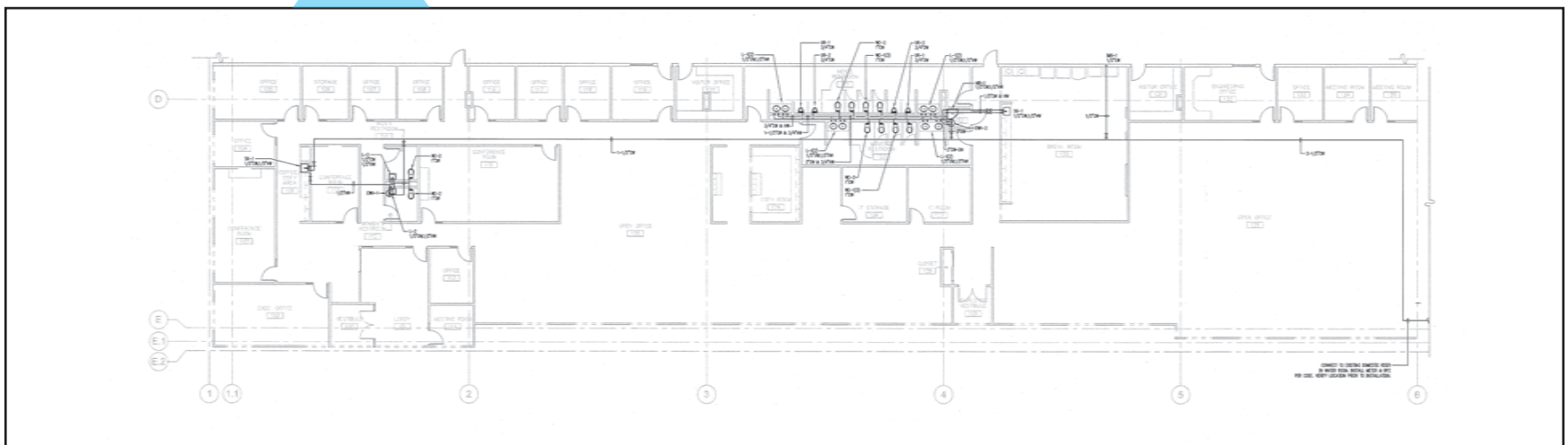
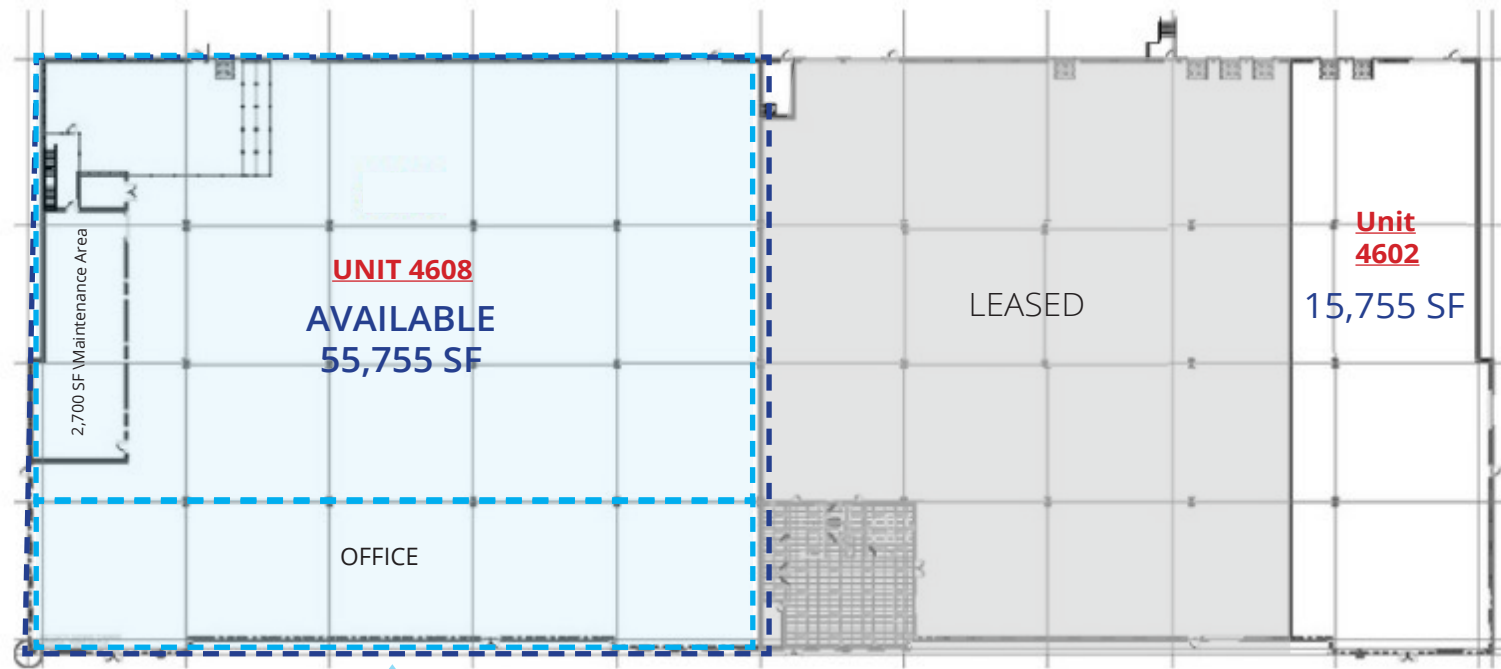
Building Plans

Unit 4602



Building Plans

Unit 4608



Access Overview



4-Way
Interchange

Interstate Blvd.

East Riverside Blvd.

Chicago Rockford
International Airport
15 Miles