



LAND FOR SALE

OREM LAND

92 E 800 N, OREM, UT 84057



PROPERTY HIGHLIGHTS

Situated along 800 North in the heart of Orem, this commercially zoned parcel offers a rare opportunity for development in a high-visibility, high-traffic location. Just east of State Street, the property benefits from strong accessibility and proximity to established retail, restaurants, and residential neighborhoods. With just over an acre of land, it's an ideal site for a wide range of commercial uses, whether for an owner-user, investor, or future redevelopment. The area continues to see strong growth, making this a strategic spot for long-term value.

SALES PRICE	TOTAL ACREAGE	ZONING	TAX ID #
\$1,300,000	1.04 ACRES	COMMERCIAL	17:045:0040

DEMOGRAPHICS

POPULATION	2 MILES	5 MILES	10 MILES
2020 POPULATION	68,926	192,598	346,435
2024 POPULATION	70,290	208,416	376,019
PROJECTED (2029)	81,331	243,249	439,044

HOUSEHOLDS

2020 HOUSEHOLDS	20,994	57,712	103,181
2024 HOUSEHOLDS	21,327	62,851	112,701
PROJECTED (2029)	24,742	73,656	132,130

HOUSEHOLD INCOME

AVG INCOME (2024)	\$104,923	\$101,250	\$102,346
MEDIAN INCOME (2024)	\$78,976	\$75,528	\$75,020



WOODLEY

R E A L E S T A T E

BRYCEN WOODLEY
BRYCEN@WOODLEY.CO
503-709-9079

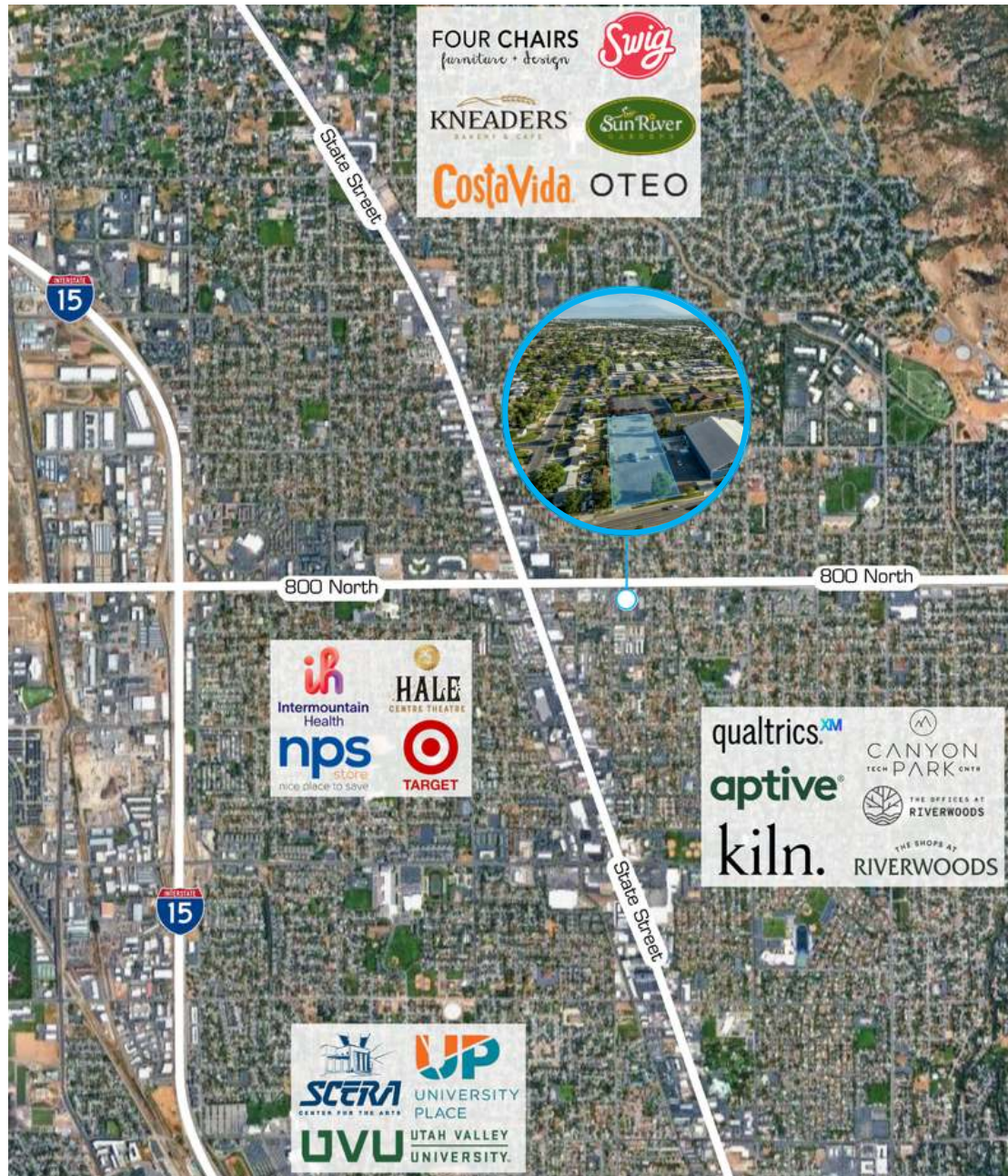
SCOTT FAIRBANKS
SCOTT@WOODLEY.CO
801-830-2234

ERIC WOODLEY
ERIC@WOODLEY.CO
801-362-7848

ONLINE
WOODLEY.CO



AREA MAP



WOODLEY | R E A L E S T A T E

BRYCEN WOODLEY
BRYCEN@WOODLEY.CO
503-709-9079

SCOTT FAIRBANKS
SCOTT@WOODLEY.CO
801-830-2234

ERIC WOODLEY
ERIC@WOODLEY.CO
801-362-7848

ONLINE
WOODLEY.CO