



LAKESHORE LOTS AT LAKE MCCONAUGHY



Fourteen lots ready for development near shores of Lake McConaughy.

SCOTT SAULTS

Associate Broker

Scott's Cell: 308-289-1383

Email: scott@lashleyland.com

PROPERTY HIGHLIGHTS

List Price **\$550,000**

Location Lakeshore Drive, Lewellen, NE

Legal Description

Block 1, lots 9-16, Block 4 lots 5-7, 11-14, Bennets Lakeshore replat, S1/2 Section 6, T15N, R40 West of the 6th PM, Keith County, NE

Acres **Approximately 13.5±**

Buyers and Sellers acknowledge all represented acres are based on the County Assessor's records. Buyers acknowledge that they are purchasing a legal description, and acknowledge that fences may or may not be on the property lines.

Taxes - Estimated **\$6,830.92**

Property Summary

Here is a great investment on the shores of Lake McConaughy. Fourteen lots surveyed and platted ready to be sold or developed. Several of these lots have incredible views of the lake and are a minute or two from the lake. The roads to these lots are graded and graveled. This area is very desirable and the neighboring lots have sold for \$45,000 – \$250,000 Call Scott with any questions.

All information herein is from sources deemed reliable, however the accuracy is not guaranteed by Lashley Land and Recreational Brokers, Inc., seller or agent. Offering is subject to error, omissions, prior sale, price change or withdrawal without notice.

SCOTT SAULTS
Associate Broker
Scott's Cell: 308-289-1383
Email: scott@lashleyland.com

LOCATION MAP



Boundary lines are estimates - Map for illustration only

AERIAL MAP



Boundary lines are estimates - Map for illustration only

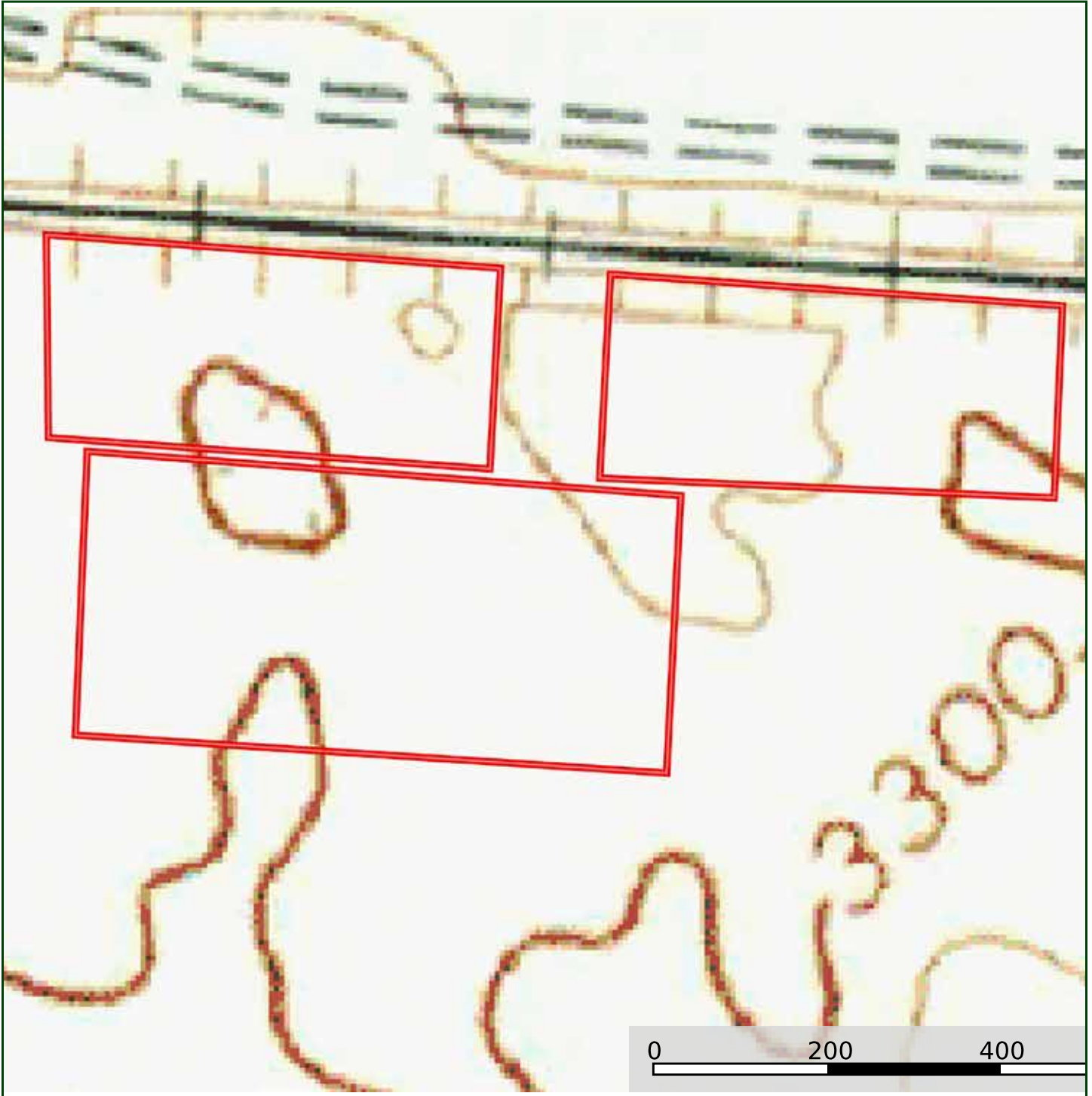
SCOTT SAULTS

Associate Broker

Scott's Cell: 308-289-1383

Email: scott@lashleyland.com

TOPO MAP



Boundary lines are estimates - Map for illustration only

PROPERTY IMAGES



SCOTT SAULTS
Associate Broker
Scott's Cell: 308-289-1383
Email: scott@lashleyland.com

PROPERTY IMAGES





NEBRASKA EXPERTS, NATIONAL EXPOSURE

Contact Information

Office: 308-532-9300

Fax: 308-532-1854

Email: info@lashleyland.com

Website: LashleyLand.com

Mike Lashley, Owner|Broker

Amy Lashley-Johnston, Scott Saults, Skip Marland,
Jordan Maassen, April Good, Jon Farley, Tami Timmerman-Lashley,
Randy Helms, Dodi Osburn, Bill Grant, Shane Mauch, Jake McQuillen,
Brandi Housman, Leala Jimerson, Stephanie Miller, and DeAnn Vaughn

Like us on Facebook

[Facebook.com/LashleyLand](https://www.facebook.com/LashleyLand)

2218 E. Walker Road • North Platte, NE 69101

SCOTT SAULTS

Associate Broker

Scott's Cell: 308-289-1383

Email: scott@lashleyland.com