

EXCLUSIVE LISTING!

280 Witmer St, Los Angeles, CA 90026

Prime Value-Add Gem! 23-Units with Strong In-Place CAP Rate, Centrally Located near Koreatown, Echo Park, Chinatown and Downtown Los Angeles. Competitive Basis - Low Price Per Unit/SQFT!



SUMMARY

Subject Property:	280 Witmer Street, Los Angeles, CA 90026
Asking Price:	\$2,650,000
Price per Unit/SF:	\$115,200 / \$221
Year Built:	1927
Building Area:	12,000 SF
Lot Size:	7,710 SF
APN#:	5153-028-009
Parking:	No Parking
Unit Mix:	1 x 1Bed + 1Bath 22 x Studios
Zoning:	LACW

Property/Investment Highlights

- 23-Unit Value-Add Opportunity with 35% Rental Upside!
- True Value-Add Basis: \pm \$115,200/Unit & \$221/SQFT.
- Strong In Place CAP Rate and GRM of \pm 7.38% & \pm 7.94x.
- Vacancy Flexibility: (1) Studio Unit (Contact Agents for Showing)
- Proven Rental Performance: In-place rents have historically performed at or above market levels within the Westlake submarket.
- Prime Westlake Location: Adjacent to Downtown LA, Chinatown, Silverlake, Echo Park, MacArthur Park & Koreatown.
- Major Employment Hubs Nearby: Good Samaritan Hospital, Ritz Carlton, Hilton, LA Financial District, Fashion & Arts District, Crypto Arena, LA Convention Center.
- Major Capital Improvements Completed: Partial roof replacement (pitched portion), copper plumbing, new gas wall heaters, updated horizontal drain lines, 100-gallon water boiler and complete electrical upgrade.
- Value-Add Amenity Potential: Underutilized rooftop with direct access and Downtown LA views—potential for tenant common area (Buyer to Verify)
- Functional Two-Story Layout: Efficient building design allowing ease of management and operations

EXCLUSIVE LISTING!

280 Witmer St, Los Angeles, CA 90026

Prime Value-Add Gem! 23-Units with Strong In-Place CAP Rate, Centrally Located near Koreatown, Echo Park, Chinatown and Downtown Los Angeles. Competitive Basis - Low Price Per Unit/SQFT!



Walker's Paradise
Daily errands do not require a car.

Rider's Paradise
World-class public transportation.

GROWTH INVESTMENT GROUP

EXCLUSIVE LISTING!

280 Witmer St, Los Angeles, CA 90026

Prime Value-Add Gem! 23-Units with Strong In-Place CAP Rate, Centrally Located near Koreatown, Echo Park, Chinatown and Downtown Los Angeles. Competitive Basis - Low Price Per Unit/SQFT!



WALT DISNEY CONCERT HALL



THE BROAD



LA CITY HALL



280 WITMER STREET

Walk Score
91

Walker's Paradise

Daily errands do not require a car.

Transit Score
90

Rider's Paradise

World-class public transportation.

EXCLUSIVE LISTING!

280 Witmer St, Los Angeles, CA 90026

Prime Value-Add Gem! 23-Units with Strong In-Place CAP Rate, Centrally Located near Koreatown, Echo Park, Chinatown and Downtown Los Angeles. Competitive Basis - Low Price Per Unit/SQFT!



ECHO PARK



DODGER STADIUM



VISTA HERMOSA PARK



280 WITMER STREET

Walker's Paradise
Daily errands do not require a car.

Rider's Paradise
World-class public transportation.

EXCLUSIVE LISTING!

280 Witmer St, Los Angeles, CA 90026

Prime Value-Add Gem! 23-Units with Strong In-Place CAP Rate, Centrally Located near Koreatown, Echo Park, Chinatown and Downtown Los Angeles. Competitive Basis - Low Price Per Unit/SQFT!



HOLLYWOOD



HOLLYWOOD FREEWAY



HOLLYWOOD SIGN



GRIFFITH OBSERVATORY



HISTORTIC FILIPINOTOWN



ECHO PARK

GROWTH INVESTMENT GROUP



280 WITMER STREET

Walk Score
91
Walker's Paradise
Daily errands do not require a car.

Transit Score
90
Rider's Paradise
World-class public transportation.

EXCLUSIVE LISTING!

280 Witmer St, Los Angeles, CA 90026

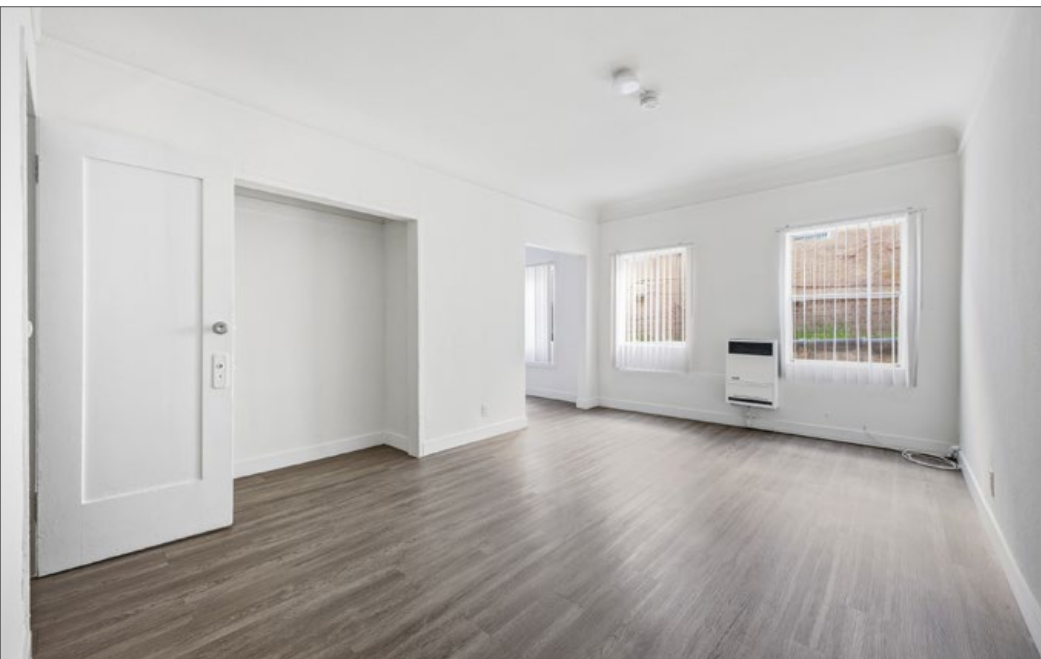
Prime Value-Add Gem! 23-Units with Strong In-Place CAP Rate, Centrally Located near Koreatown, Echo Park, Chinatown and Downtown Los Angeles. Competitive Basis - Low Price Per Unit/SQFT!



EXCLUSIVE LISTING!

280 Witmer St, Los Angeles, CA 90026

Prime Value-Add Gem! 23-Units with Strong In-Place CAP Rate, Centrally Located near Koreatown, Echo Park, Chinatown and Downtown Los Angeles. Competitive Basis - Low Price Per Unit/SQFT!



JUSTIN MCCARDLE | 310.606.0192 | justin@growthinvestmentgroup.com

ABEL BENITEZ | 213.595.8105 | abel@growthinvestmentgroup.com