

27.87 Acres - For Sale

Colliers

New Price Reduction

SEC I-90 & Route 20, Hampshire, IL



Property Overview

- 27.87 Acres
- Excellent visibility on I-90 with 2,500 feet of frontage
- Direct access to I-90/Route 20 four-way interchange
- Zoned M2 - outdoor equipment and trailer storage allowed
- Low Kane County Taxes
- Utilities to site
- Asking Price: ~~\$4,850,000 / \$4.00 PSF~~ \$3,950,000/\$3.25/PSF

Suzanne Serino, SIOR

Vice Chair

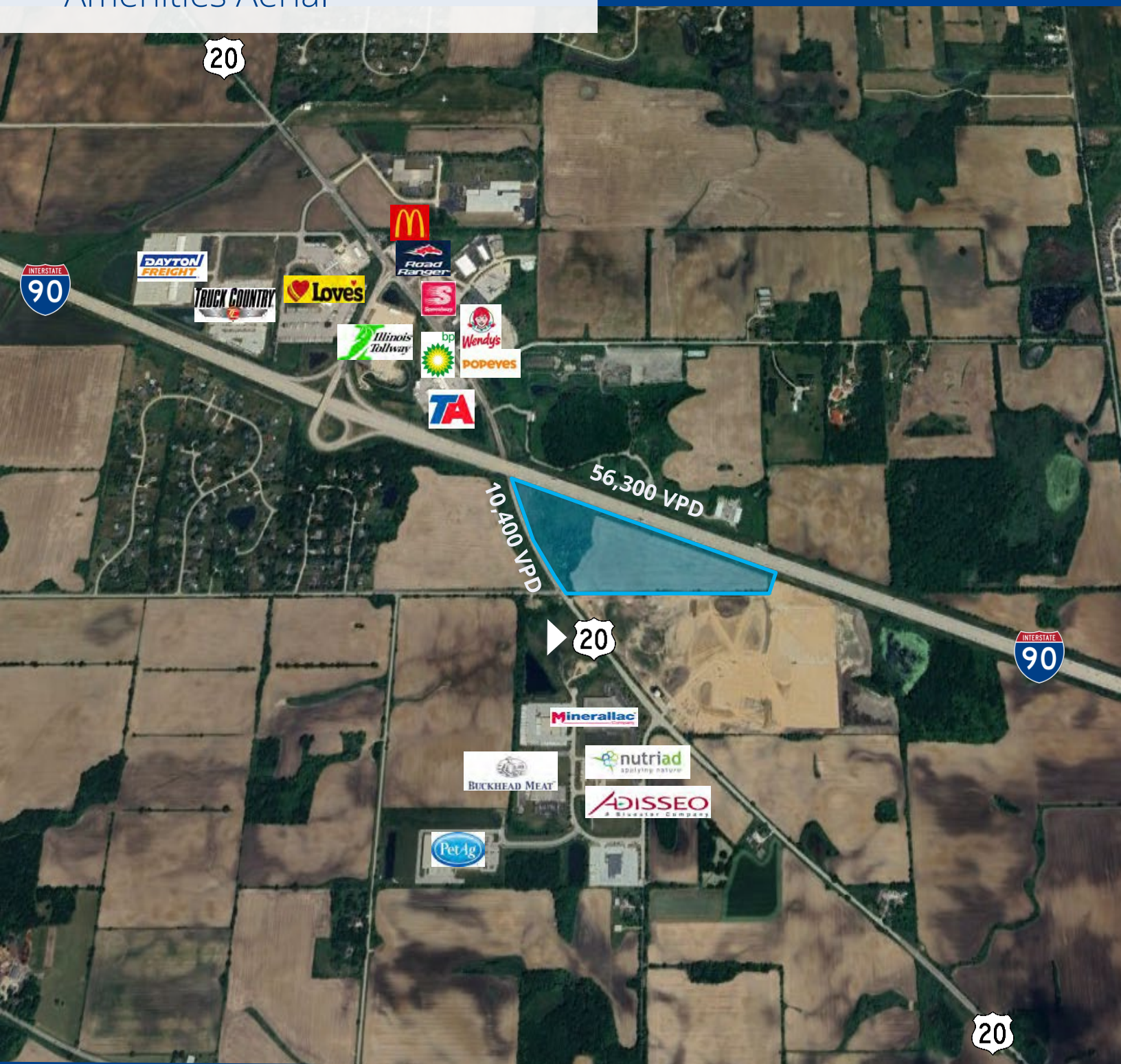
+1 847 698 8226

suzanne.serino@colliers.com

27.87 Acres - For Sale

Colliers

Amenities Aerial



Suzanne Serino, SIOR

Vice Chair

+1 847 698 8226

suzanne.serino@colliers.com



Vice Chair
+1 847 698 8226
suzanne.serino@colliers.com

This document has been prepared by Colliers International for advertising and general information only. Colliers International makes no guarantees, representations or warranties of any kind, expressed or implied, regarding the information including, but not limited to, warranties of content, accuracy and reliability. Any interested party should undertake their own inquiries as to the accuracy of the information. Colliers International excludes unequivocally all inferred or implied terms, conditions and warranties arising out of this document and excludes all liability for loss and damages arising there from. This publication is the copyrighted property of Colliers International and/or its licensor(s). ©2021. All rights reserved.