

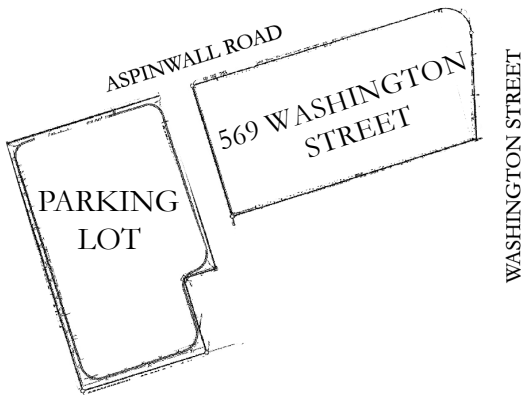
RETAIL/SHOWROOM/STUDIO SPACE FOR LEASE

569 WASHINGTON STREET CODMAN SQUARE • DORCHESTER • BOSTON • 02124



- ◆ ±4,599 SF
- ◆ Full semi-finished basement
- ◆ 19 off-street parking spots
- ◆ Former Citizens Bank branch

SITE PLAN



Demographics (Two Mile)

Source: CoStar

Population	141,188
Median Age	34.3
Median Home Value	\$592,476
Households	50,390
Average Household Income	\$92,447
Average Household Spending	\$28,181
Employees	35,584
Businesses	5,170

Daily Traffic (<.6 miles)

Source: CoStar

14,428 cars

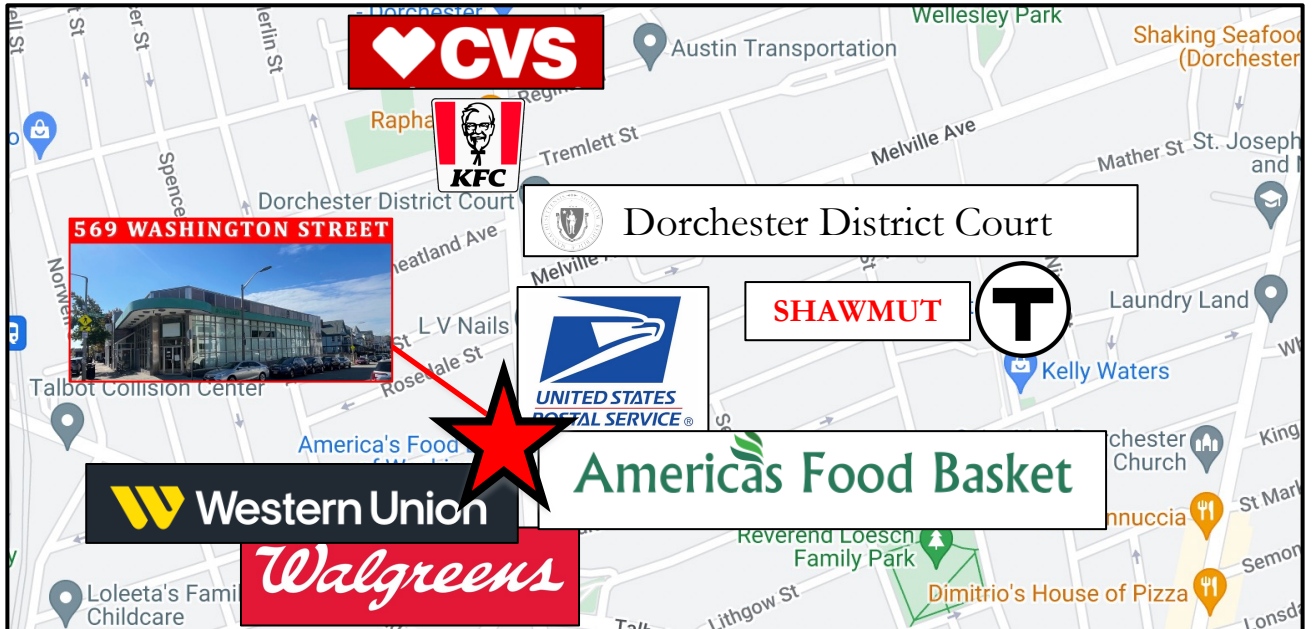


JP Plunkett | Principal | plunkett@r-dome.com | 617.999.4993
 Warren Brown | Senior Director | warren@bostoncommercialproperties.com | 617.962.8337
 540 Gallivan Boulevard, Suite 206, Boston, MA 02124



www.r-dome.com | [@reddomerealty](https://twitter.com/reddomerealty)





JP Plunkett

A Member of **NAI**Global Unlimited

All material presented herein is for informational purposes only. Information is compiled from sources deemed reliable but is subject to errors, omissions, changes or withdrawal without notice. Red Dome LLC nor its affiliates assume any liability in any fashion at all.