

# 5225 | WISCONSIN

FRIENDSHIP HEIGHTS | D.C.

Medical Office For Lease  
933 - 7,068 SF

Medical Office in Friendship Heights – One Block Away From the Metro!



Leasing Information:  
202.513.6700

## Lincoln

**Merrill Turnbull**  
202.513.6713  
mturnbull@lpc.com

**Adam Biberaj**  
202.513.6736  
abiberaj@lpc.com

**Richard Coppola**  
301.304.8405  
rcoppola@lpc.com

**Paul "Rocky" Kern**  
301.304.8399  
pkern@lpc.com

**Tim Whitebread**  
202.513.6712  
twhitebread@lpc.com

Lincoln Property Company  
101 Constitution Avenue, NW Suite 325 East  
Washington, DC 20001

[www.lpc.com](http://www.lpc.com)



# 5225 | WISCONSIN

FRIENDSHIP HEIGHTS | D.C.

## Available Space Summary



Availabilities	SF	Lease Rate	Date Available
Suite 201A	7,068 SF	\$48.00 FS	60 days
Suite 300	3,117 SF	\$47.00 FS	Immediately
Suite 310	973 SF	\$47.00 FS	Immediately
Suite 404	1,384 SF	\$43.00 FS	Immediately
Suite 501	933 SF	\$47.00 FS	Immediately
Suite 513	3,041 SF	\$47.00 FS	Immediately
Suite 600	3,000 - 6,297 SF	\$48.00 FS	Immediately
Suite 601	1,354 SF	\$48.00 FS	Immediately

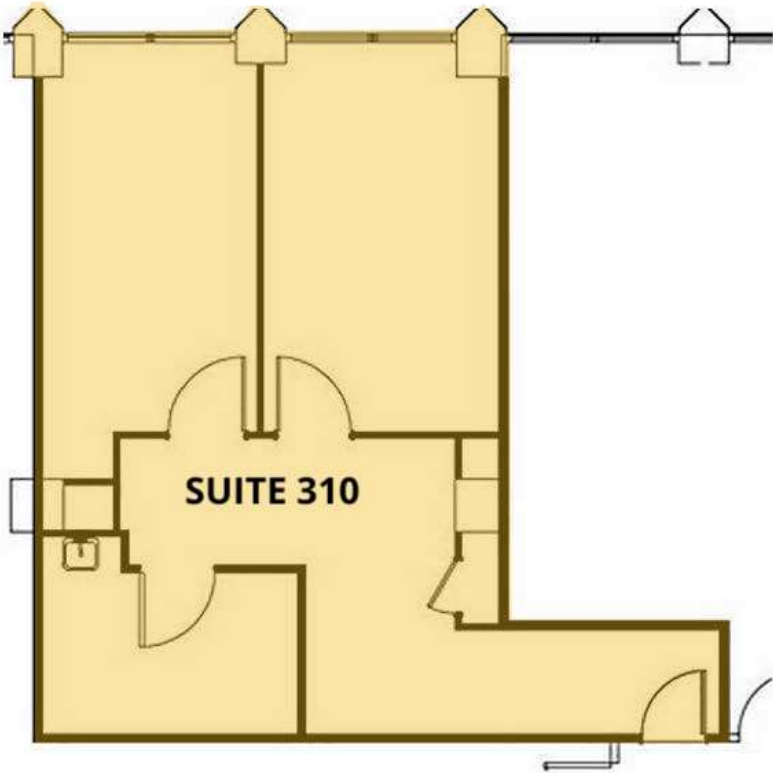
### Property Highlights

- Building upgrades completed to enhance and the visitor experience including:
- Renovated lobby with digital tenant directory
- New common corridors & directional signage
- ADA restrooms on multiple floors
- Abundant visitor parking: 2.1 / 1,000 SF parking ratio

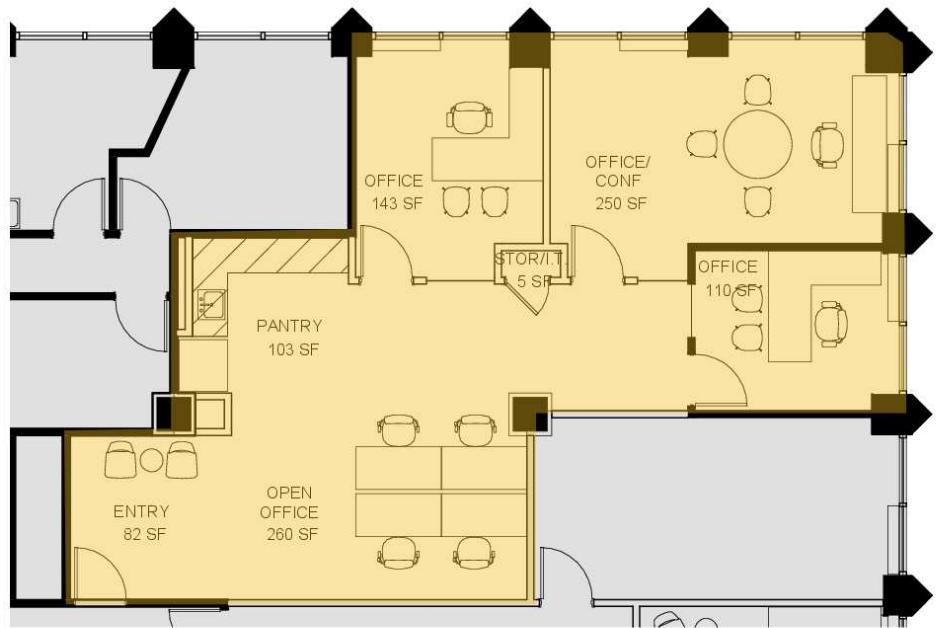




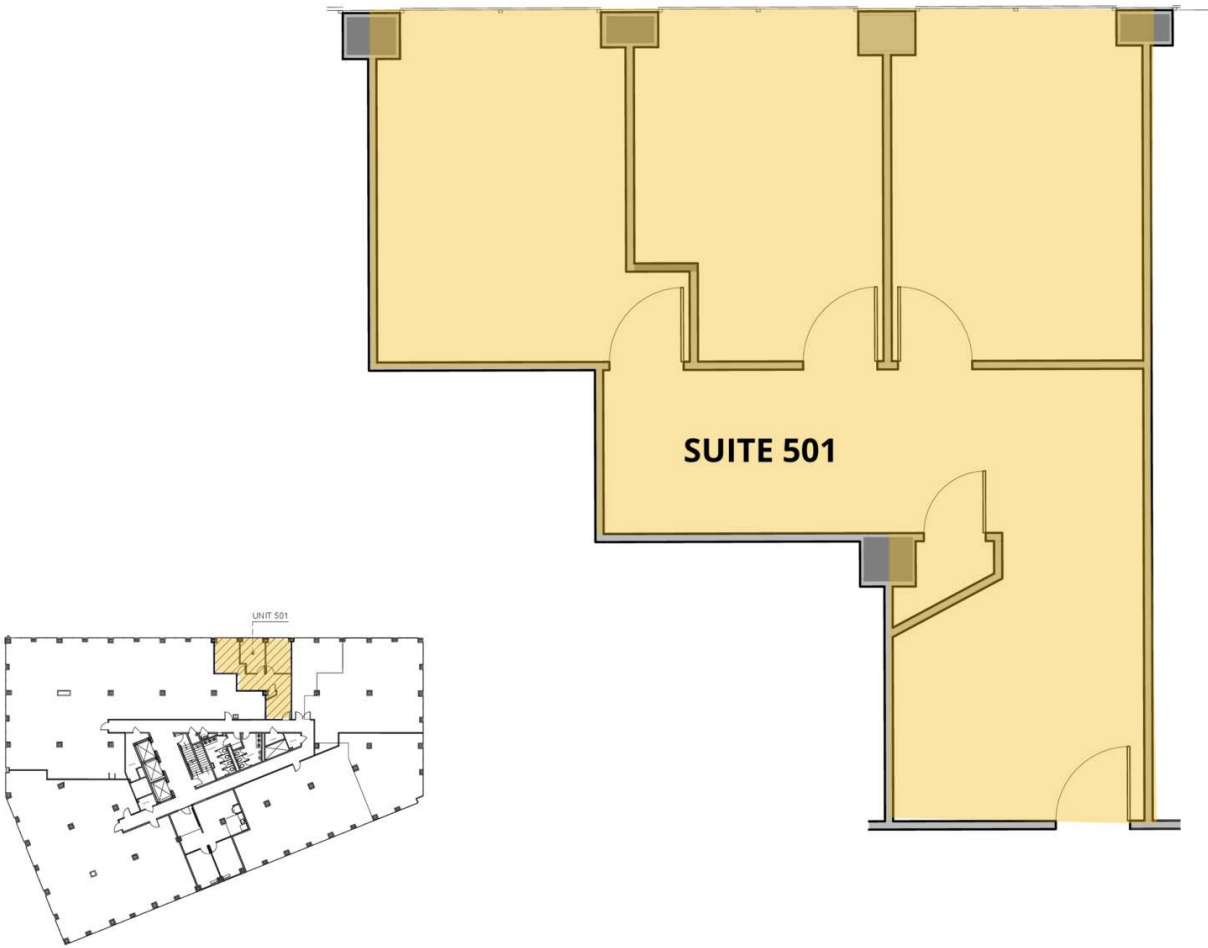
Suite	Size	Description
■ Suite 201A	7,068 SF	Direct stair access from first floor building entrance. Space can be subdivided.



Suite	Size	Description
■ Suite 310	973 SF	Built out suite with two private, windowed offices and kitchenette/pantry.

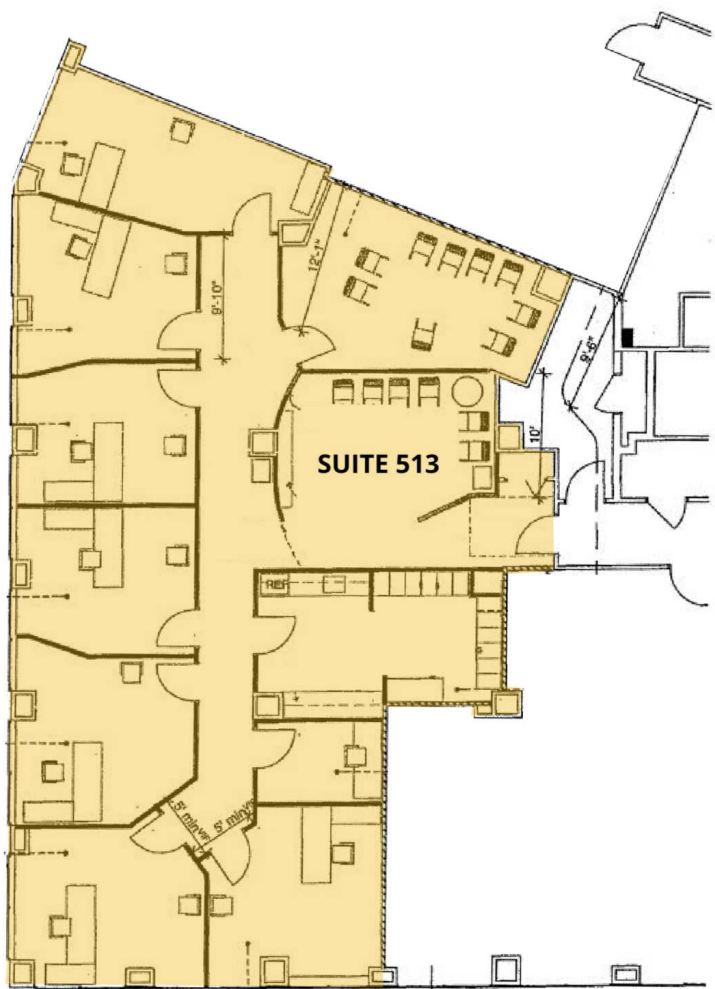


Suite	Size	Description	VIRTUAL TOUR
■ Suite 404	1,384 SF	Move-in ready spec suite with three private, windowed offices; pantry; open work stations; and reception. FINAL REMAINING OFFICE SPEC SUITE AT 5225 WISCONSIN! PRICE DROPPED TO \$43.00 FS TO FINISH SPEC LEASING!	<a href="#">View Here</a>

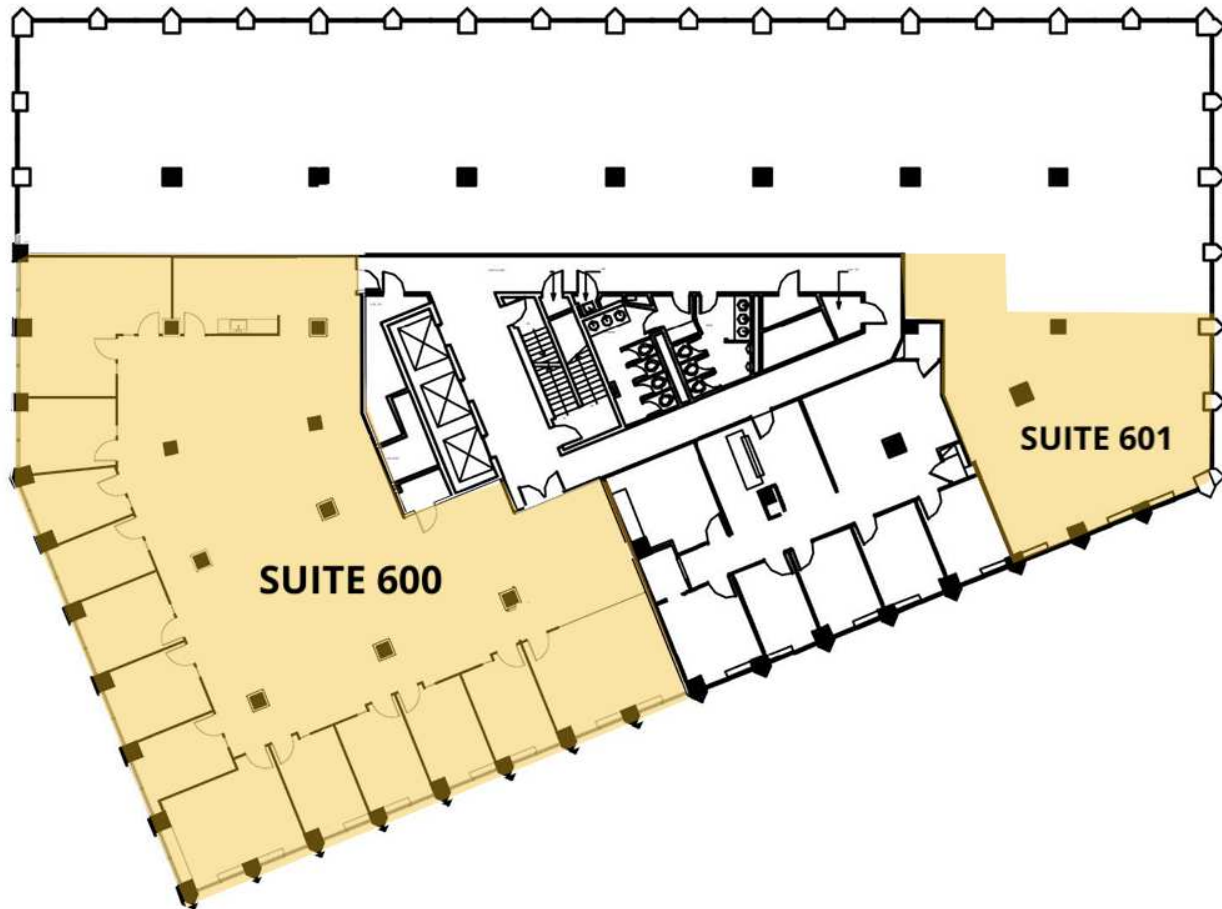


Suite	Size	Description
■ Suite 501	933 SF	Space includes three private, windowed offices and reception/waiting area.



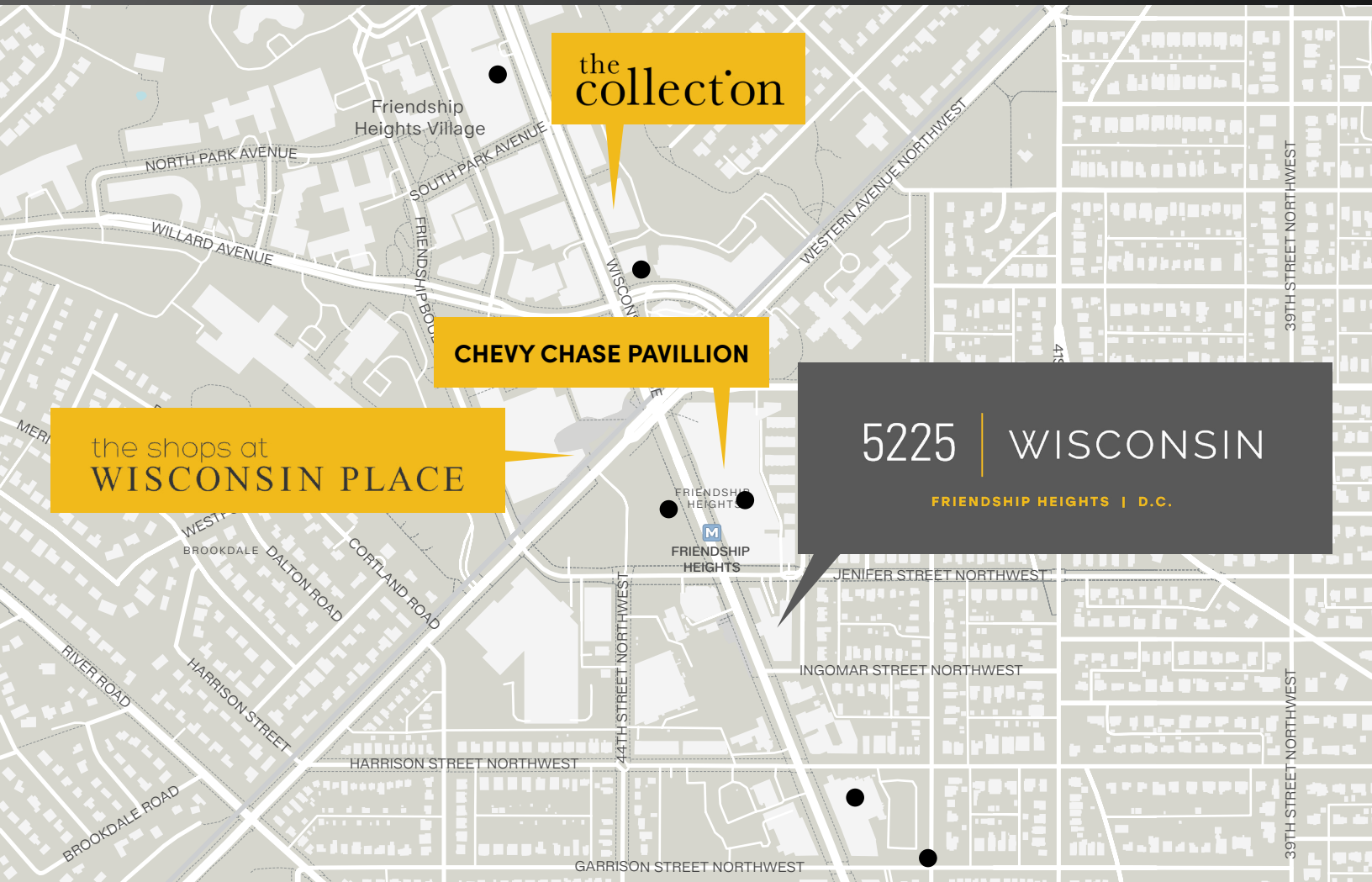


Suite	Size	Description
■ Suite 513	3,041 SF	Space includes eight windowed offices, conference room, reception/waiting area, pantry/copy room, and IT/storage closet.



Suite	Size	Description
■ Suite 600	3,000 - 6,297 SF	Corner suite with immediate elevator exposure. Great window line and views to Tysons Corner. Space can be subdivided.
■ Suite 601	1,354 SF	Space includes three windowed offices, kitchenette/pantry, open work area and reception/waiting area.





## ● PENDING RESIDENTIAL DEVELOPMENTS

1,400 PROPOSED RESIDENTIAL UNITS | 800+ UNITS UNDER RENOVATION

5500 Wisconsin Ave NW: 300 units

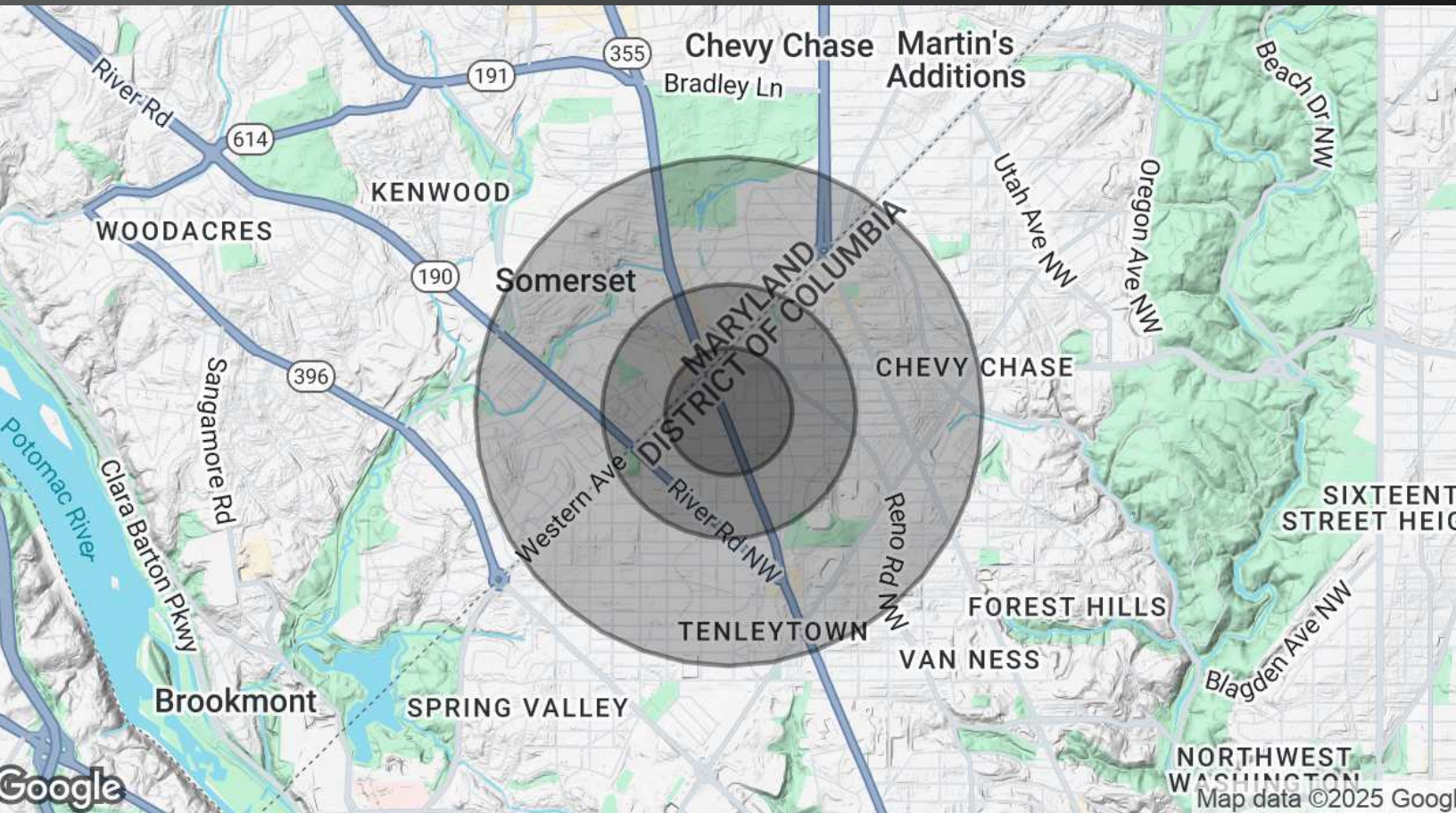
5425 Wisconsin Ave NW: 93 units (senior housing)

Mazza Gallerie (5300 Wisconsin Ave NW): 325 units

Friendship Center (5333 Wisconsin Ave NW): 310 units

Fox 5 Headquarters (5151 Wisconsin Ave NW): 210 units

4201 Garrison St NW: 130 units



Population	0.25 Miles	0.5 Miles	1 Mile
Total Population	2,031	7,359	25,123
Average Age	39.7	43.9	45.8
Average Age (Male)	41.4	45.4	45.5
Average Age (Female)	38.3	42.5	45.0
Households & Income	0.25 Miles	0.5 Miles	1 Mile
Total Households	885	3,458	11,696
# of Persons per HH	2.3	2.1	2.1
Average HH Income	\$173,343	\$191,153	\$205,989
Average House Value	\$1,590,035	\$1,092,445	\$1,029,952

2020 American Community Survey (ACS)





5225 | WISCONSIN

FRIENDSHIP HEIGHTS | D.C.



Leasing Information:  
202.513.6700

**Lincoln**

Merrill Turnbull  
202.513.6713  
mturnbull@lpc.com

Adam Biberaj  
202.513.6736  
abiberaj@lpc.com

Richard Coppola  
301.304.8405  
rcoppola@lpc.com

Paul "Rocky" Kern  
301.304.8399  
pkern@lpc.com

Tim Whitebread  
202.513.6712  
twhitebread@lpc.com

Lincoln Property Company  
101 Constitution Avenue, NW Suite 325 East  
Washington, DC 20001

[www.lpc.com](http://www.lpc.com)