

# 323 West 11th St



## WEST VILLAGE | BETWEEN GREENWICH & WASHINGTON STS

RETAIL SPACE FOR LEASE

**+ 650 RSF**

Ground Floor

NEW YORK, NEW YORK

### New to Market

Former Gallery Space

Unit: **Ground Floor**

RSF: **650 RSF**

Avail: **4/1/2024**

Price: **\$8.000 / Month**

Ceiling: **approximately 14'**

Frontage: **approximately 11'**

**Scott Klatsky**

(212)206-6155

[sklatsky@timeequities.com](mailto:sklatsky@timeequities.com)



**NYC RETAIL**  
BY TIME EQUITIES INC

**Scott Schneidman**

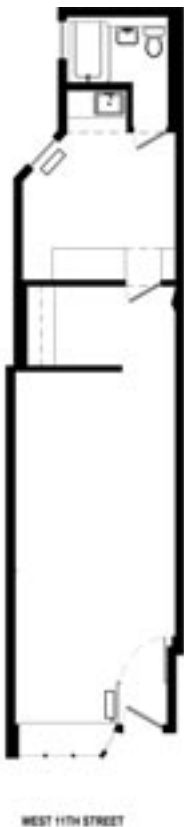
(212)206-6163

[sschneidman@timeequities.com](mailto:sschneidman@timeequities.com)

55 FIFTH AVE | 15TH FLOOR | NEW YORK, NY | 10003-4398 | 212-206-6000 | [TIMEEQUITIES.COM](http://TIMEEQUITIES.COM)

LICENSED REAL ESTATE BROKER

# 323 West 11th St



650 RSF  
Ground  
Floor

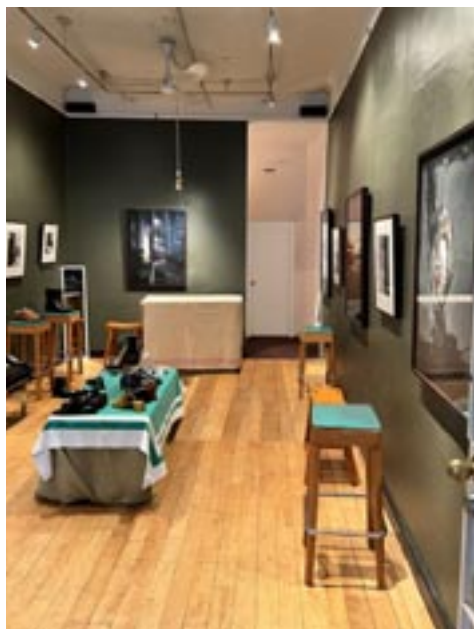
## WEST VILLAGE | BETWEEN GREENWICH & WASHINGTON STS

RETAIL SPACE FOR LEASE

**± 650 RSF**

Ground Floor

NEW YORK, NEW YORK



No warranty, or representation is made as to the accuracy of the above information and same is submitted subject to errors, omissions, change of price, rental or other conditions, prior lease or withdrawal without notice, and to any special listing conditions, including the rate and manner of payment of commissions for particular offering, the terms of which are available to duly licensed brokers. This listing is subject to the aforesaid conditions and is not to be deemed an employment nor a binding contract of any kind unless or until our brokerage agreement is fully executed.

**Scott Klatsky**

(212)206-6155

[sklatsky@timeequities.com](mailto:sklatsky@timeequities.com)



**NYC RETAIL**  
BY TIME EQUITIES INC

**Scott Schneidman**

(212)206-6163

[sschneidman@timeequities.com](mailto:sschneidman@timeequities.com)

55 FIFTH AVE | 15TH FLOOR | NEW YORK, NY | 10003-4398 | 212-206-6000 | [TIMEEQUITIES.COM](http://TIMEEQUITIES.COM)

LICENSED REAL ESTATE BROKER