

AVISON YOUNG

For Lease

227 Fort Pitt Boulevard
Pittsburgh, PA 15222

A unique retail opportunity in the heart of Downtown Pittsburgh.

- 5,217 sf on two levels
- Stunning views of Monongahela River
- Proximity to Point Park University campus and student population
- Walkable to all downtown dining, shopping, and amenities
(Walk score of 92)
- Perfect for salon, café, or other retail use
- In the heart of Pittsburgh's CBD and part of the Downtown Pittsburgh Historical District
- Access to public transportation and plentiful public parking
- Easy access to highways in and out of the city
(I-376, I-579, Fort Pitt Bridge)

For further information

Michael Downey, SIOR, Principal, Vice President
+1 412 944 2135
michael.downey@avisonyoung.com

Maggie McGinley, Associate
+1 412 944 2137
maggie.mcginley@avisonyoung.com

227 Fort Pitt Boulevard

PITTSBURGH, PA 15222

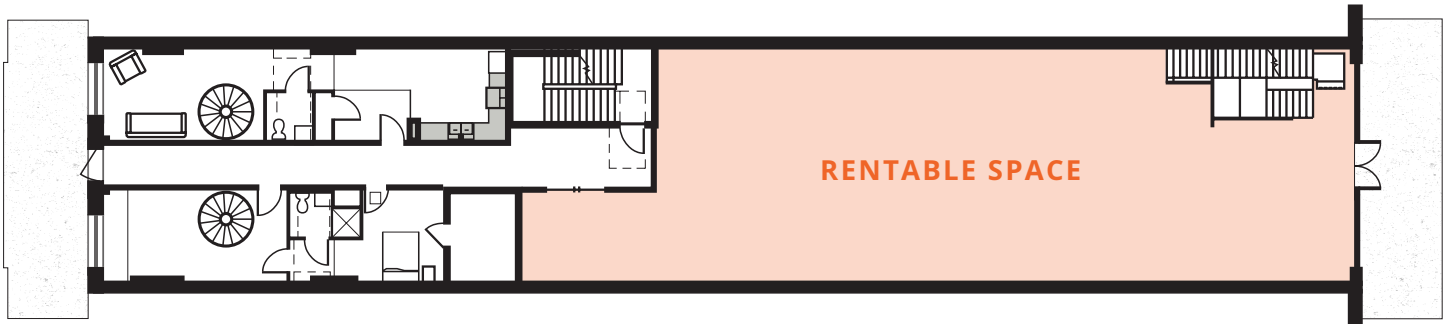


For further information

Michael Downey, SIOR, Principal, Vice President
+1 412 944 2135
michael.downey@avisonyoung.com

Maggie McGinley, Associate
+1 412 944 2137
maggie.mcginley@avisonyoung.com

FIRST FLOOR



SECOND FLOOR



For further information

Michael Downey, SIOR, Principal, Vice President
+1 412 944 2135
michael.downey@avisonyoung.com

Maggie McGinley, Associate
+1 412 944 2137
maggie.mcginley@avisonyoung.com