



FOR LEASE – OFFICE SPACE MOVE-IN READY

1206 Bent Oaks Ct, Suite 100
Denton, TX

LOCATION:

Located in in southeast Denton in the Dove Creek Office Park with other professional and medical office tenants. Easy access to I-35 E and S. Loop 288. Site is close to retail and restaurant offerings, near the busy intersection of Teasley Lane and Lillian Miller Pkwy.

SIZE:

➤ Suite 100 - 2,070 RSF

LEASE RATE:

➤ \$16.95/sf/yr Base Rent + NNNs

AVAILABILITY:

➤ May 1, 2026

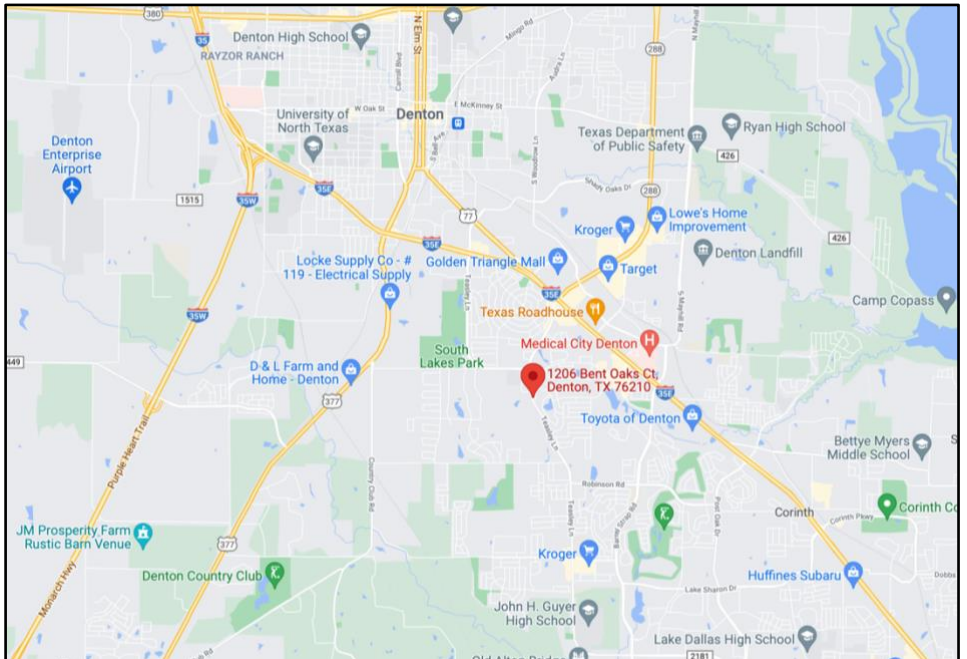
HIGHLIGHTS:

- Move-in Ready
- Garden Office
- Multiple Private Entrances
- High Ceilings
- Lots of Windows
- Private Break Room with Sink
- Private Restroom
- Monument Signage Available on Teasley Lane

DEMOGRAPHIC DATA*:

- Avg Household Income - \$105,559 (w/in 2 mi radius)
- Population - 329,962 (w/in 10 mi radius)
- Teasley Lane VPD - 22,394

*Sourced from 2024 - 2025 CoStar data



FOR INFORMATION:

Diana Pergande | Phyllis Garcia

972.899.1851 | Diana@BridgeRealtyTexas.com | Phyllis@BridgeRealtyTexas.com

www.BridgeRealtyTexas.com

400 Parker Square, Suite 270H | Flower Mound, TX 75028

This information is believed to be accurate, but no representation or warranty, express or implied, as to its accuracy or completeness is made by any party. The presentation of this property is submitted subject to errors, omissions, change of price or prior sale or lease, or withdrawal without notice.



PHOTOS

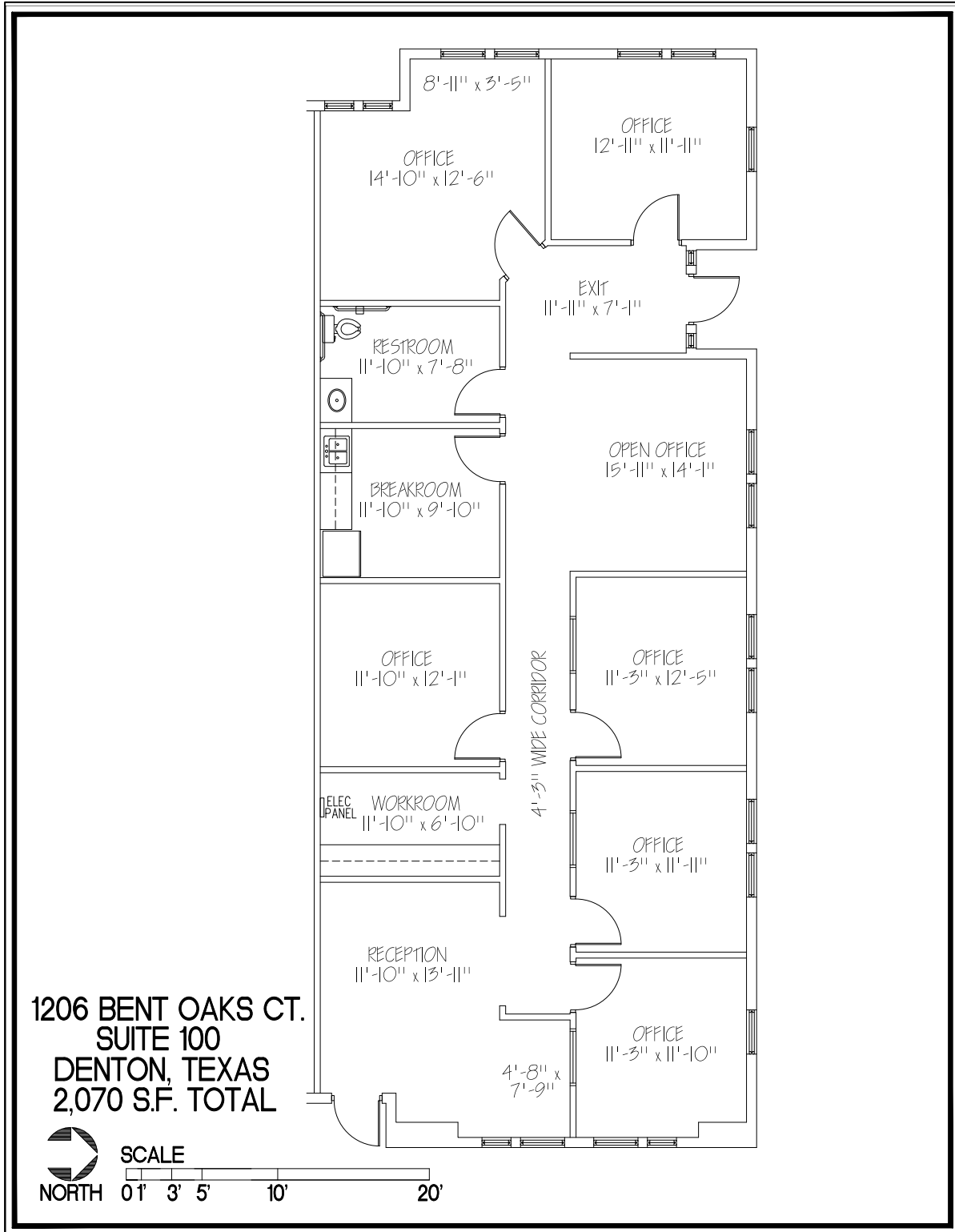
1206 Bent Oaks Ct, Suite 100
Denton, TX





FLOOR PLAN

1206 Bent Oaks Ct, Suite 100
Denton, TX





MAPS

1206 Bent Oaks Ct Denton, TX

