



**Best Buy | Planet Fitness Building**  
 Across from Oak Park Mall / Greater Kansas City Area  
 95th & Quivira (NEQ) | 9301-9331 Quivira | Overland Park, KS

**AVAILABLE  
 FOR  
 SALE**



**65,216 SF BUILDING ON 6.1 ACRES OF LAND**

**DEMOGRAPHICS**

	1 mile	3 miles	5 miles
Estimated Population	10,064	100,633	229,298
Avg. Household Income	\$74,010	\$90,072	\$97,375

- Across from Oak Park Mall - Kansas City's #1 Mall in sales
- Greater Kansas City top retail corridor
- Area tenants include Target, Nordstrom, Macy's, TJ Maxx, Home Goods, Academy Sports, Nordstrom Rack and most national retailers
- Excellent visibility and signage to Quivira Road with great traffic counts and super location identity in the marketplace
- Excellent for retail, grocery, office, or service use - the one must have location in Greater Kansas City

 [CLICK HERE TO VIEW MORE LISTING INFORMATION](#)

For More Information Contact: *Exclusive Agent*  
**DAVID BLOCK | 816.412.7400 | [dblock@blockandco.com](mailto:dblock@blockandco.com)**





# Best Buy | Planet Fitness Building

Across from Oak Park Mall / Facing Quivira Road  
95th & Quivira (NEQ) | 9301-9331 Quivira | Overland Park, KS

## DRONE PHOTOS



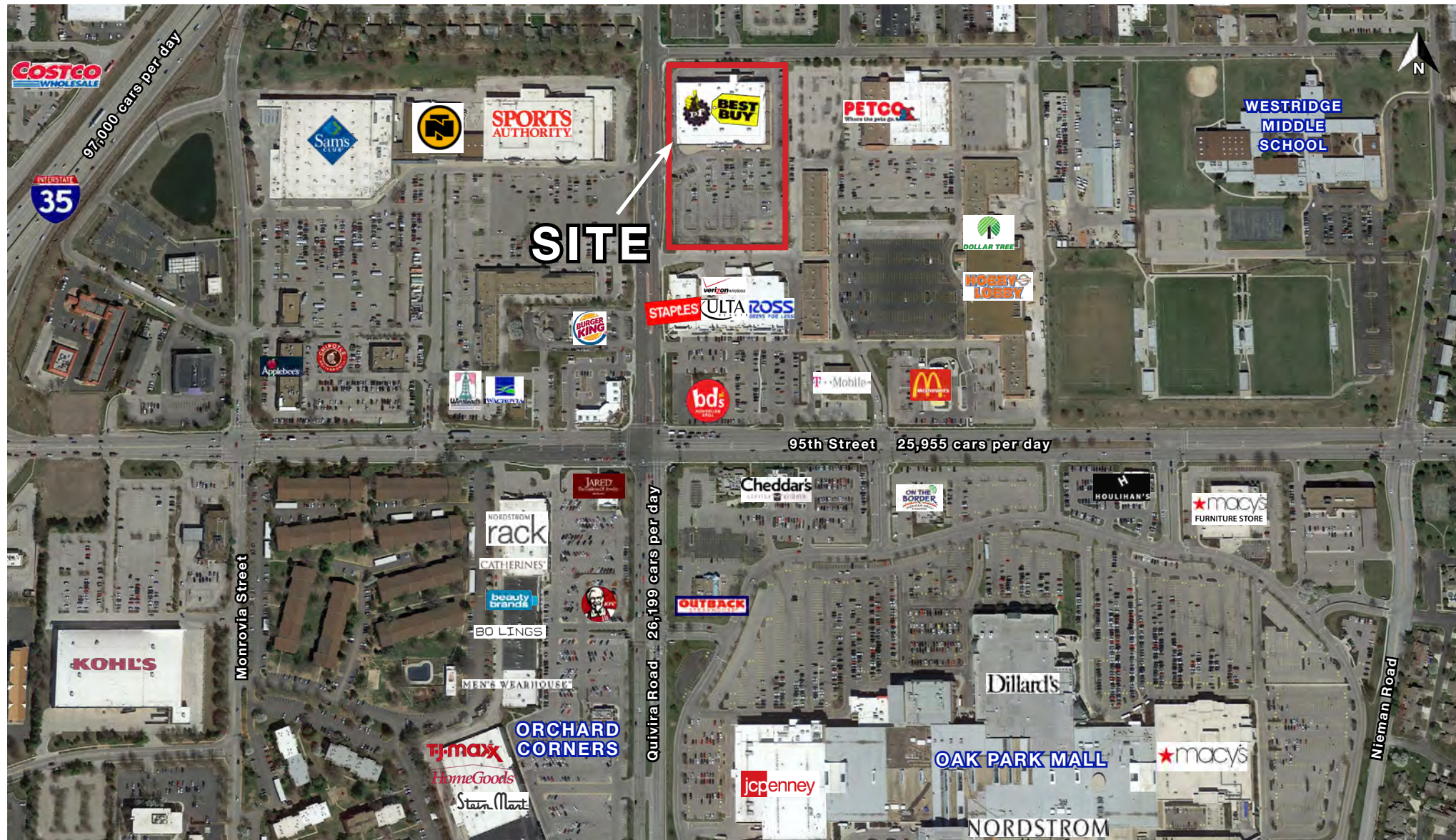


# Best Buy - Planet Fitness Building | FOR SALE

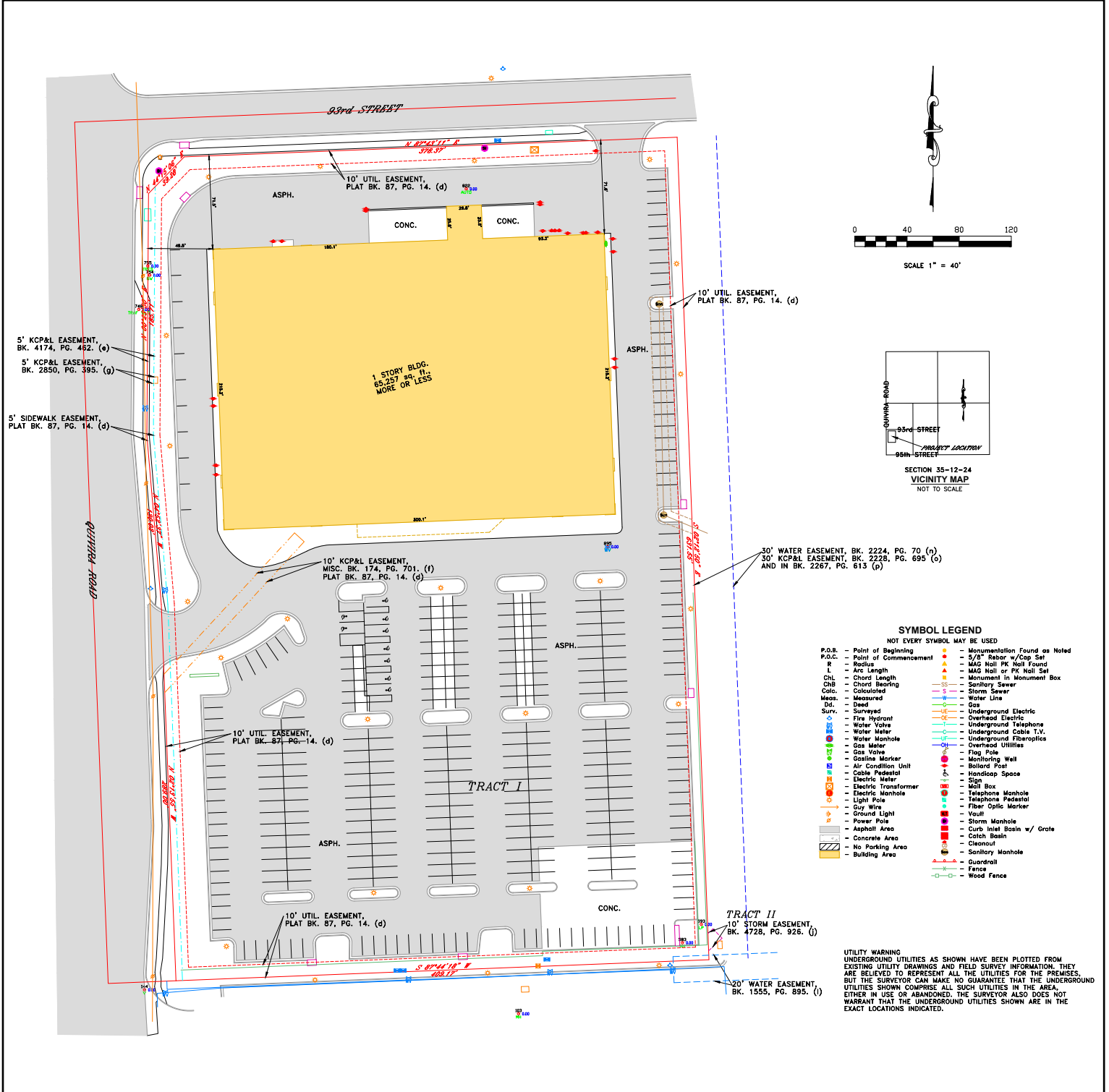
Across from Oak Park Mall / Greater Kansas City Area

95th & Quivira (NEQ) | 9301-9331 Quivira | Overland Park, KS | A Kansas City Suburb

AERIAL



## SURVEY



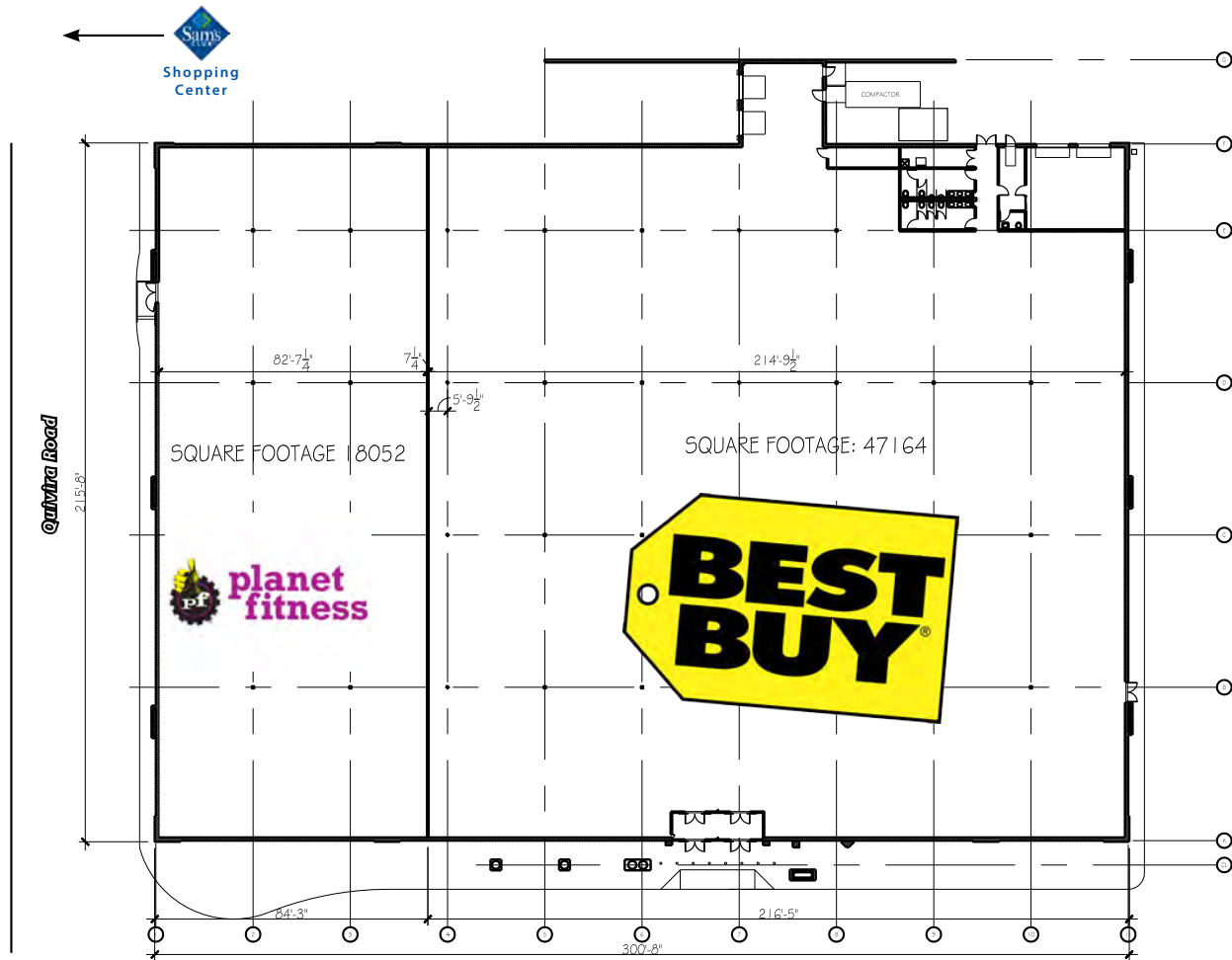


# Best Buy - Planet Fitness Building | FOR SALE

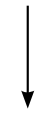
Across from Oak Park Mall / Greater Kansas City Area

95th & Quivira (NEQ) | 9301-9331 Quivira | Overland Park, KS | A Kansas City Suburb

## FLOOR PLAN



OAK PARK MALL



Major Shopping Center →

TOTAL SQFT: 65216

FLOOR PLAN 1  
SCALE: 1/32" = 1'-0"





# Best Buy | Planet Fitness Building

Across from Oak Park Mall / Facing Quivira Road  
95th & Quivira (NEQ) | 9301-9331 Quivira | Overland Park, KS

## OVERLAND PARK, KANSAS FACTS

- Overland Park is the second most populous city in the state of Kansas. Located in Johnson County, it is the second most populous city in the Kansas City metropolitan area.
- The median income for a household in the city is \$71,513, and the median income for a family is \$93,293.
- The average appraised value of an Overland Park home is \$342,337 (2019) and the average sales price is \$365,772 (2018). Overland Park, as a whole, benefits from a high level of owner occupancy as the citywide single-family home ownership rate was 64% in December 2014.
- 99.6% of residents have high school diplomas, 61.4% have a Bachelor's degree or higher, and 24.2% graduate or professional degree.
- The Scheels Overland Park Soccer Complex is the only complex of its kind in the country and helped Overland Park be named the number one soccer city in the nation by Livability.com. The 96-acre complex with 12 lighted regulation-size fields, all with synthetic turf, hosted the 2010 and 2013 US Youth Soccer National Championships and will host the 2019 and 2020 US Youth Soccer National Championships.
- Click Here To View: [Overland Park Economic and Development Profile Report](#)
- [Best Cities to Buy a House in America \(#1\) - Niche.com](#)
- [Top 100 Best Places to Live \(#11\) - Livability.com](#)
- [Best Places to Live \(#15\) - Money.com](#)
- [Best Place to Live in Kansas - Thisisinsider.com](#)
- [Hottest Zip Codes in the United States \(#8\) - Realtor.com](#)
- [Most Popular Large Cities to Relocate to \(#6\) - moveBuddha.com](#)
- [Best Cities for Young Families to Buy a Home \(#17 overall, #1 in the Midwest\) - valuepenguin.com](#)
- [Top 25 Cities Where Millennials Are Buying Homes \(#11\) - SmartAsset.com](#)
- [Best Places to Raise a Family \(#1\) - Wallethub.com](#)
- [Best Places to Rent in America \(#7\) - Wallethub.com](#)
- [Best Cities for People With Disabilities \(#1\) - WalletHub.com](#)
- [Best Cities for Hispanic Entrepreneurs \(#24\) - Wallethub.com](#)
- [Best Cities for Wallet Fitness \(#8\) - WalletHub.com](#)
- [Best Places for Staycation \(#4\) - Viewfinder - Expedia](#)
- [Most Undervalued Cities in America \(#11\) - SmartAsset.com](#)
- [Best Cities for Keeping Your New Year's Resolutions \(#13\) - WalletHub.com](#)

## JOHNSON COUNTY, KANSAS FACTS

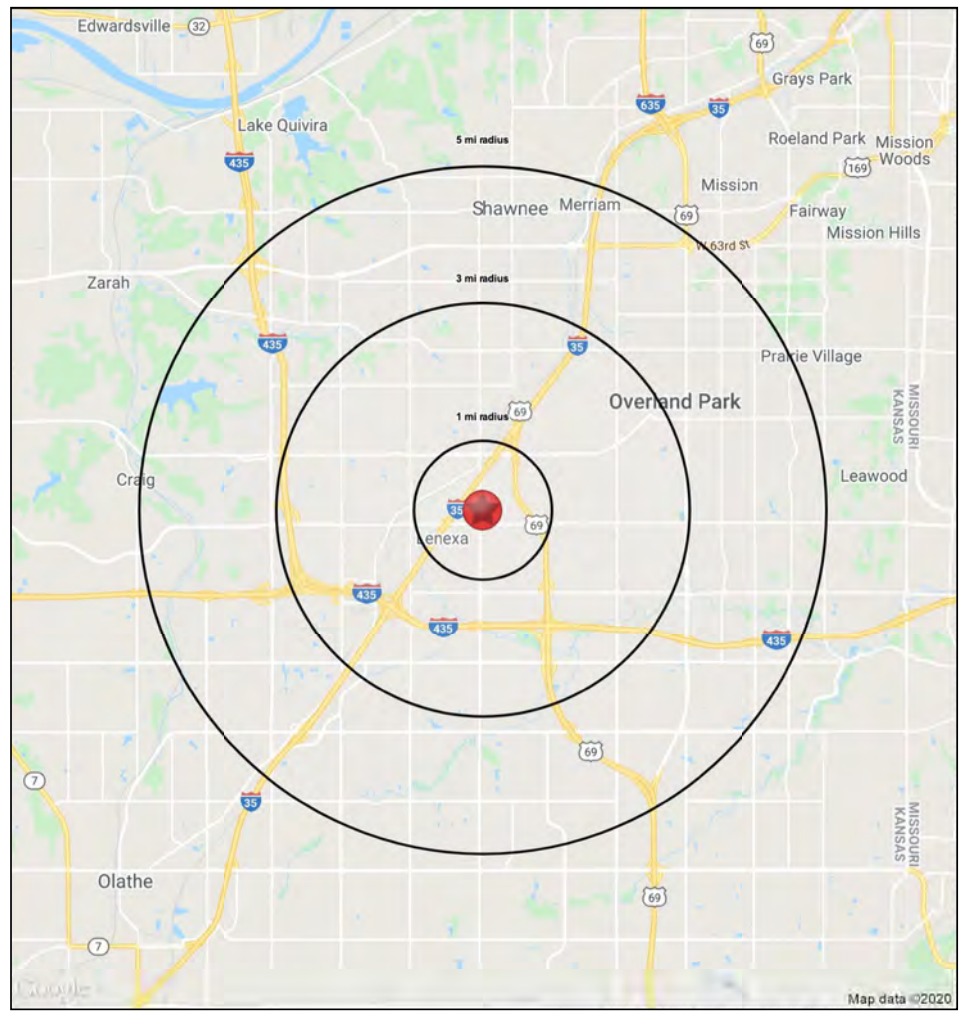
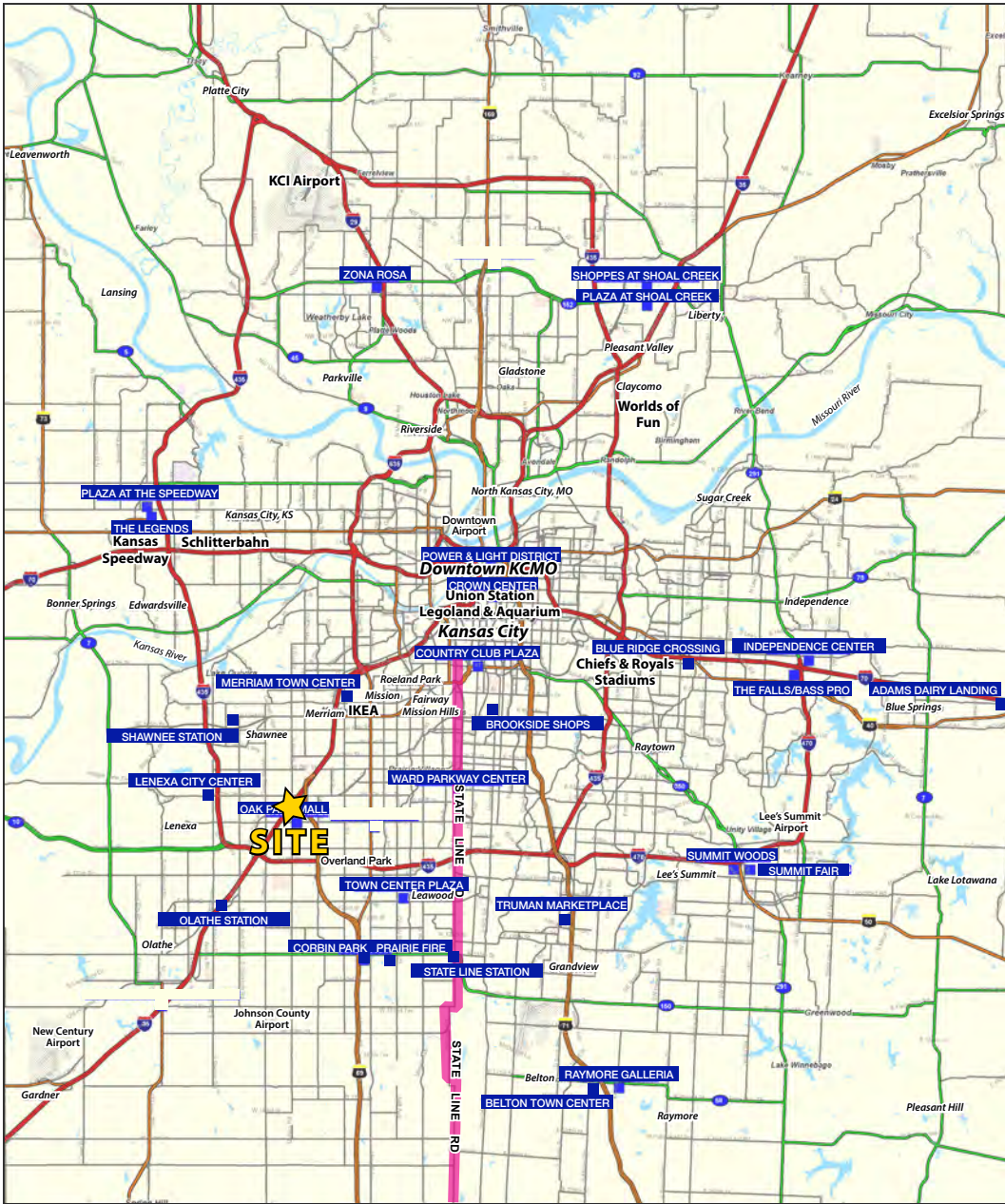
- According to the US Census Bureau, Johnson County is one of the largest counties in the state of Kansas and one of the wealthiest counties in the United States
- Johnson County is growing three times the rate of Kansas in general, according to the US Census Bureau
- According to the US Census Bureau, Johnson County residents are more educated and more likely to own their own home than elsewhere in Kansas
- The unemployment rate in Johnson County has dropped steadily since early 2011, with a current rate of 2.8%, as compared to the state average of 3.4% and the national average of 4.0%
- 95.6% of residents have high school diplomas, 51.1% have a Bachelor's degree or higher, and 17.9% graduate or professional degree.
- [25 Best Counties in the Country to Live in \(Johnson County, #23\) - USA TODAY](#)



# Best Buy - Planet Fitness Building | FOR SALE

Across from Oak Park Mall / Greater Kansas City Area

95th & Quivira (NEQ) | 9301-9331 Quivira | Overland Park, KS | A Kansas City Suburb



Block & Company, Inc., Realtors | 605 W. 47th Street, Ste. 200, Kansas City, MO 64112 | 816.753.6000 | www.blockandco.com



All information furnished regarding property for sale or lease is from sources deemed reliable, but no warranty or representation is made as to the accuracy thereof and the same is subject to errors, omissions, changes of prices, rental or other conditions, prior sale or lease or withdrawal without notice.



# Best Buy | Planet Fitness Building

Across from Oak Park Mall / Facing Quivira Road  
95th & Quivira (NEQ) | 9301-9331 Quivira | Overland Park, KS

## 93rd & Quivira Road

### Overland Park, KS

		1 mi radius	3 mi radius	5 mi radius
<b>POPULATION</b>	2021 Estimated Population	10,064	100,633	229,298
	2026 Projected Population	9,861	100,144	231,817
	2010 Census Population	9,936	96,794	216,180
	2000 Census Population	9,914	97,768	210,464
	Projected Annual Growth 2021 to 2026	-0.4%	-	0.2%
	Historical Annual Growth 2000 to 2021	-	0.1%	0.4%
	2021 Median Age	36.0	39.6	40.0
<b>HOUSEHOLDS</b>	2021 Estimated Households	4,306	44,708	102,221
	2026 Projected Households	4,344	45,852	106,387
	2010 Census Households	4,130	41,600	92,760
	2000 Census Households	4,109	40,568	86,544
	Projected Annual Growth 2021 to 2026	0.2%	0.5%	0.8%
	Historical Annual Growth 2000 to 2021	0.2%	0.5%	0.9%
<b>RACE AND ETHNICITY</b>	2021 Estimated White	72.1%	79.1%	81.0%
	2021 Estimated Black or African American	9.4%	7.4%	6.3%
	2021 Estimated Asian or Pacific Islander	4.6%	5.1%	5.6%
	2021 Estimated American Indian or Native Alaskan	0.5%	0.4%	0.4%
	2021 Estimated Other Races	13.3%	8.0%	6.6%
	2021 Estimated Hispanic	18.4%	11.7%	9.5%
<b>INCOME</b>	2021 Estimated Average Household Income	\$74,010	\$90,072	\$97,375
	2021 Estimated Median Household Income	\$59,653	\$76,665	\$82,293
	2021 Estimated Per Capita Income	\$31,875	\$40,082	\$43,485
<b>EDUCATION (AGE 25+)</b>	2021 Estimated Elementary (Grade Level 0 to 8)	4.7%	2.2%	1.8%
	2021 Estimated Some High School (Grade Level 9 to 11)	6.9%	3.2%	2.5%
	2021 Estimated High School Graduate	21.2%	17.2%	16.3%
	2021 Estimated Some College	21.1%	20.5%	18.9%
	2021 Estimated Associates Degree Only	7.5%	8.6%	8.2%
	2021 Estimated Bachelors Degree Only	27.8%	31.9%	33.4%
	2021 Estimated Graduate Degree	10.8%	16.5%	19.0%
<b>BUSINESS</b>	2021 Estimated Total Businesses	997	5,193	11,692
	2021 Estimated Total Employees	15,166	95,409	201,160
	2021 Estimated Employee Population per Business	15.2	18.4	17.2
	2021 Estimated Residential Population per Business	10.1	19.4	19.6

