

FOR LEASE **Santa Rosa**

# Stony Point Campus



FREE PARKING. SUITES FROM 603 SQ. FT. – 6,602 SQ. FT.



# FOR LEASE **Santa Rosa** **Stony Point Campus**



**ThriveatStonyPoint.com**

## Class A Offices in Santa Rosa's Premier Office Park

Type:

**Office**

Address:

**100, 110, 120 Stony Point Rd  
Santa Rosa, CA**

Total SF

**220,100**

# of Floors

**Three Buildings:**

**2 Stories**

Parking

**FREE On-site**

**(Comparable Downtown Stalls are  
\$165/Month per Stall)**



Project  
Video

### DESCRIPTION

The Stony Point Campus is a collection of four Class A office buildings located on a beautiful three-acre man-made lake with glass block fountains, walking paths and dramatic water displays. The buildings offer extensive glass lines and oak trim finishes. These four buildings were built between 1990-2001 and considered the “premier” office park within Santa Rosa. The project is known for its unique campus-like environment, institutional-quality construction, and central location near both employee and executive residences. The property also benefits from its immediate proximity to Highways 101 and 12, public transportation and onsite amenities.

New 790.4 kW rooftop solar panel installation reducing annual carbon footprint by 879 tons and generating 1,127,270 kWh/year of power.

### LOCATION

The portfolio's location provides close proximity to the region's executive housing and over 3.4 million square feet of regional retail amenities within a two mile radius. Nearby retail amenities include Coddington Mall, the region's shopping mall and Santa Rosa's primary retail destination. Coddington Mall has over 45 stores and features Whole Foods, Target, Macy's and Nordstrom Rack.

### AMENITIES

- Spacious lobbies in tenant suites and common areas.
- Campus setting with water features, seating areas, fountains, walking paths & public art.
- Interior tenant improvements
  - Custom high quality finishes and multiple conference rooms.

### KEY TENANTS

Sutter Health

BPM LLP

National Instruments

Abbey Weitzenberg

Vantreo



EXCLUSIVELY MARKETING BY:

**Shawn Johnson**  
DRE#: 00835502

**Dave Peterson**  
DRE#: 01280039

**Brian Keegan**  
DRE#: 01809537



# FOR LEASE **Santa Rosa** **Stony Point Campus**



[ThriveatStonyPoint.com](http://ThriveatStonyPoint.com)



EXCLUSIVELY MARKETING BY:  
**Shawn Johnson**  
707.528.1400 ext. 238

**Dave Peterson**  
707.528.1400 ext. 210

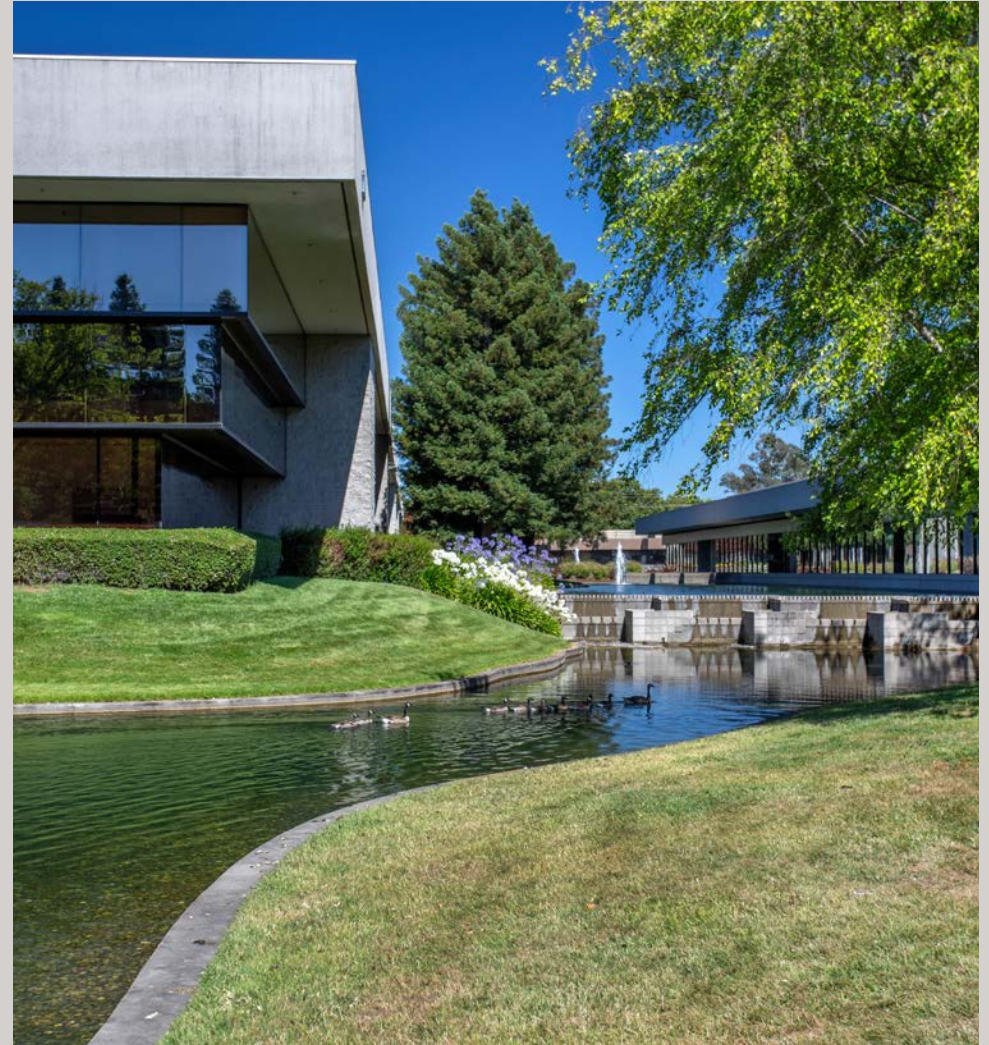
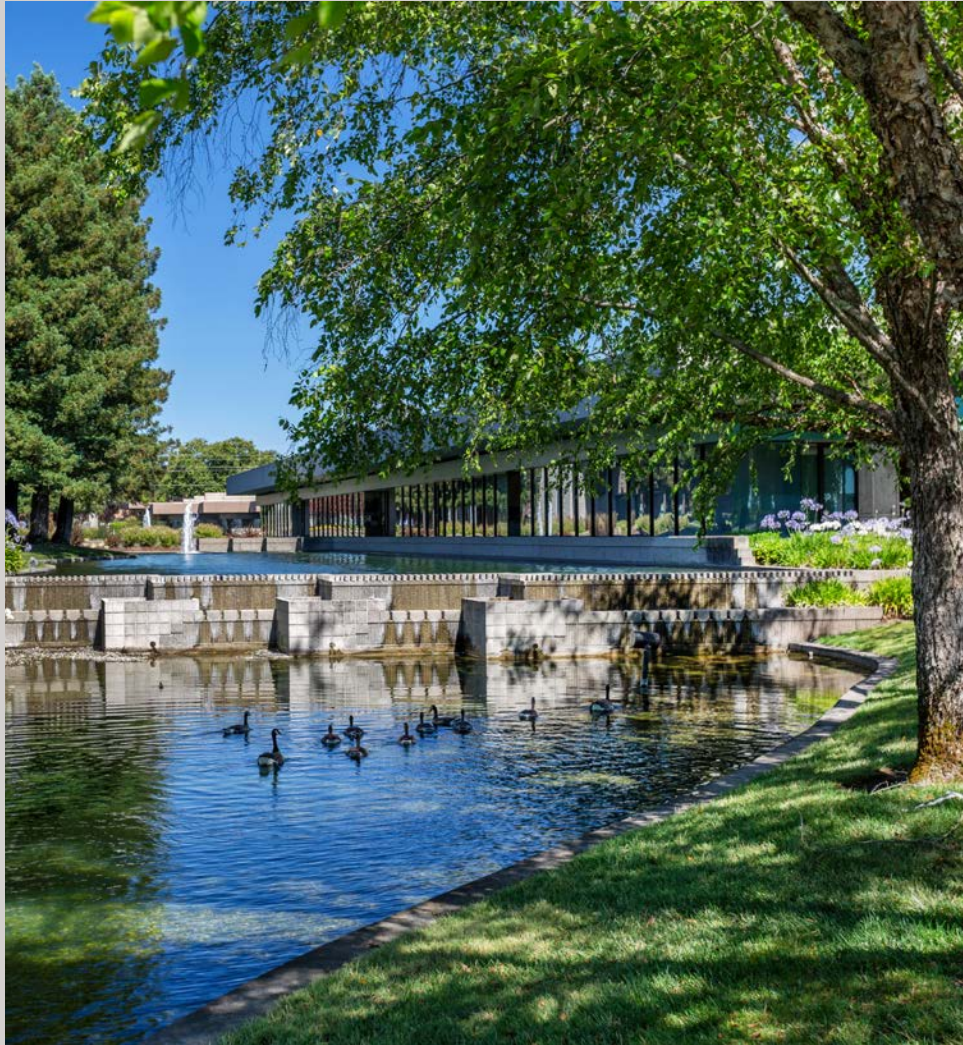
**Brian Keegan**  
707.528.1400 ext. 249



FOR LEASE **Santa Rosa**  
**Stony Point Campus**



[ThriveatStonyPoint.com](http://ThriveatStonyPoint.com)



EXCLUSIVELY MARKETING BY:  
**Shawn Johnson**  
707.528.1400 ext. 238

**Dave Peterson**  
707.528.1400 ext. 210

**Brian Keegan**  
707.528.1400 ext. 249



FOR LEASE **Santa Rosa**  
**Stony Point Campus**



[ThriveatStonyPoint.com](http://ThriveatStonyPoint.com)



EXCLUSIVELY MARKETING BY:

**Shawn Johnson**  
707.528.1400 ext. 238

**Dave Peterson**  
707.528.1400 ext. 210

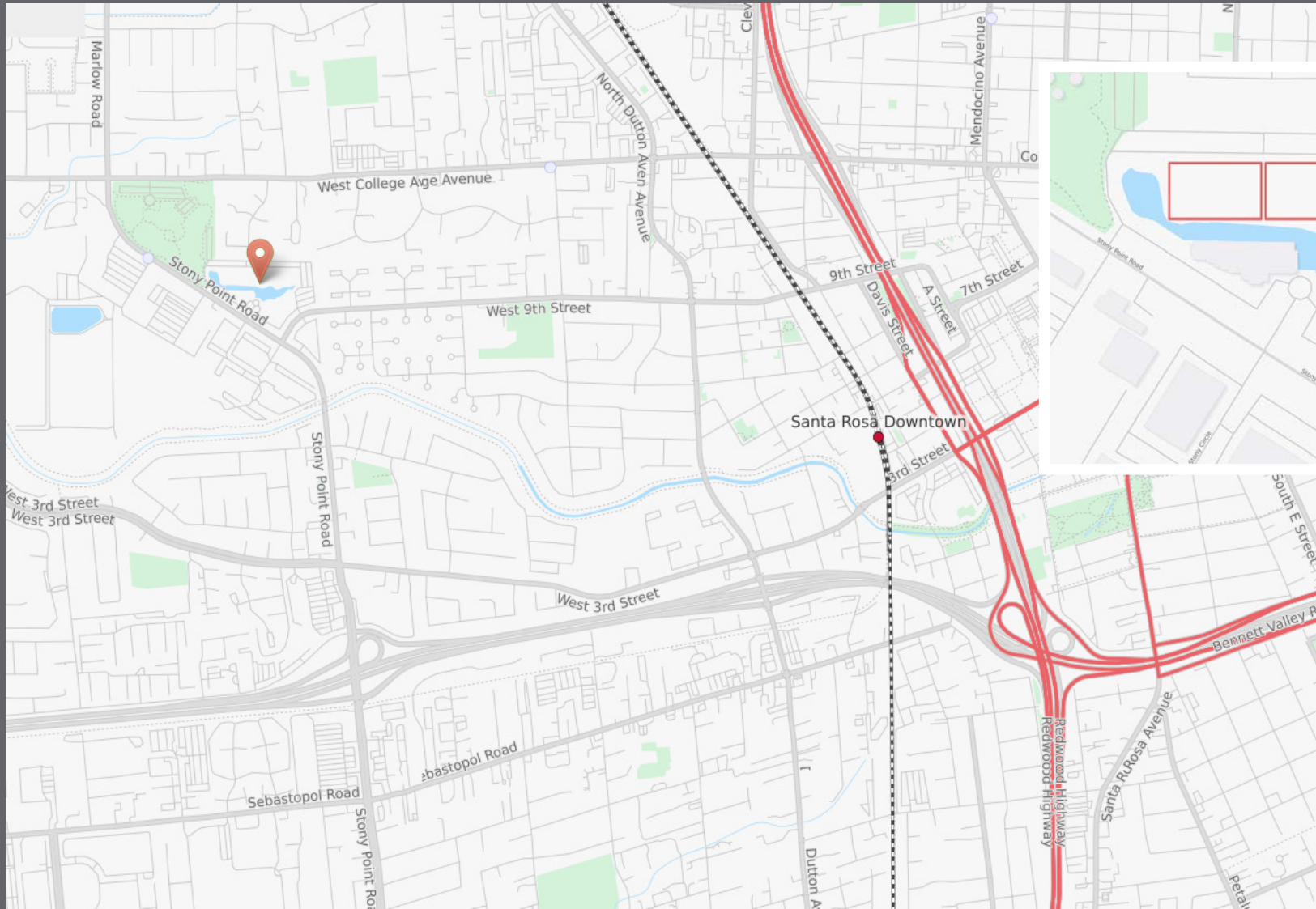
**Brian Keegan**  
707.528.1400 ext. 249



# FOR LEASE **Santa Rosa** **Stony Point Campus**

[ThriveatStonyPoint.com](http://ThriveatStonyPoint.com)

Located in Santa Rosa's premier Stony Point office park, with immediate proximity to Highways 101 and 12, public transportation, and amenities.



EXCLUSIVELY MARKETING BY:

**Shawn Johnson**  
707.528.1400 ext. 238

**Dave Peterson**  
707.528.1400 ext. 210

**Brian Keegan**  
707.528.1400 ext. 249

FOR LEASE **Santa Rosa**  
**Stony Point Campus**

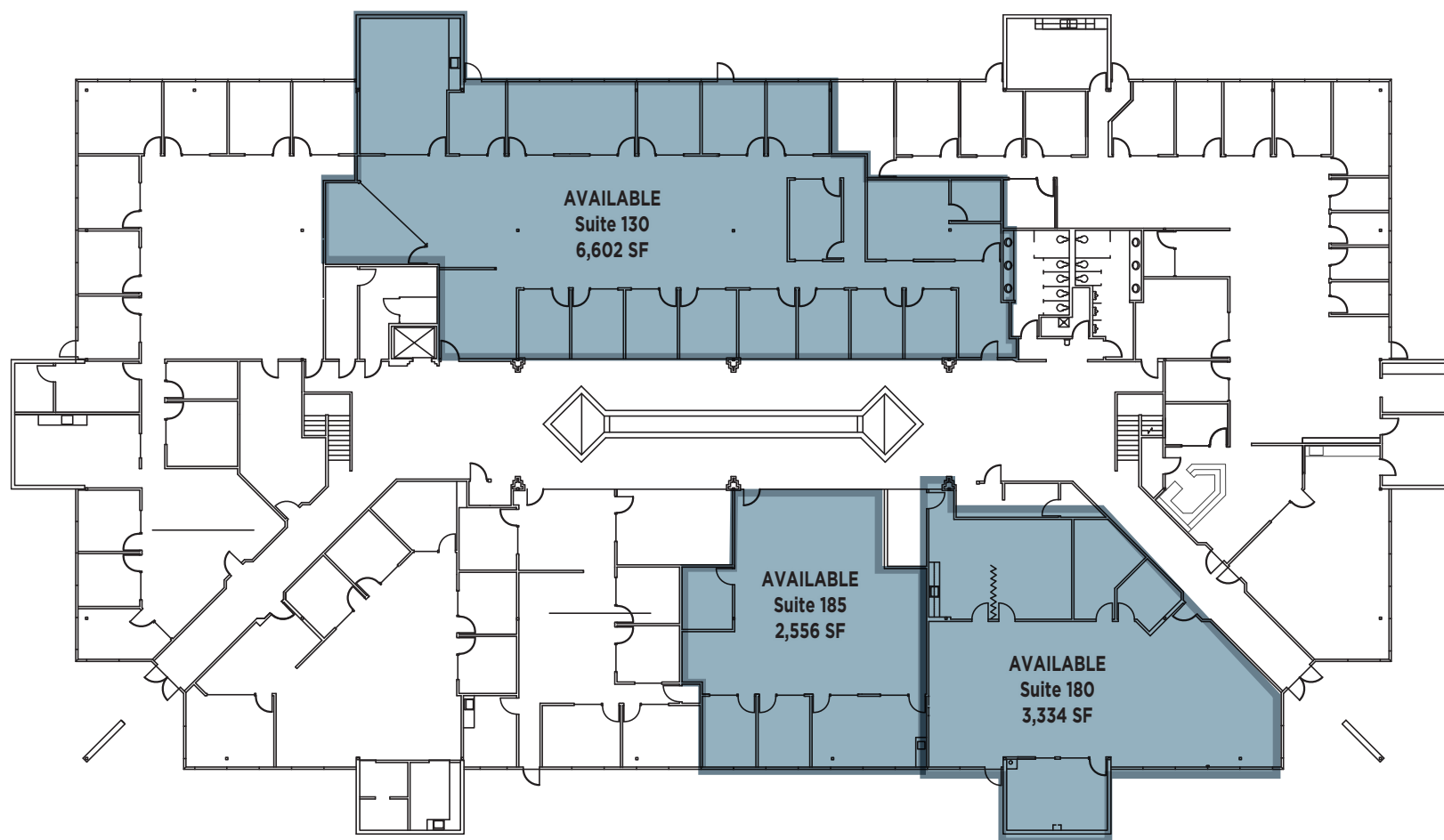


ThriveatStonyPoint.com

**2,556 - 6,602 RSF**

100 Stony Point Road  
First Floor

- Suite 130: 6,602 Square Feet
- Suite 185: 2,556 Square Feet
- Suite 180: 3,334 Square Feet



EXCLUSIVELY MARKETING BY:

**Shawn Johnson**  
707.528.1400 ext. 238

**Dave Peterson**  
707.528.1400 ext. 210

**Brian Keegan**  
707.528.1400 ext. 249

FOR LEASE **Santa Rosa**  
**Stony Point Campus**

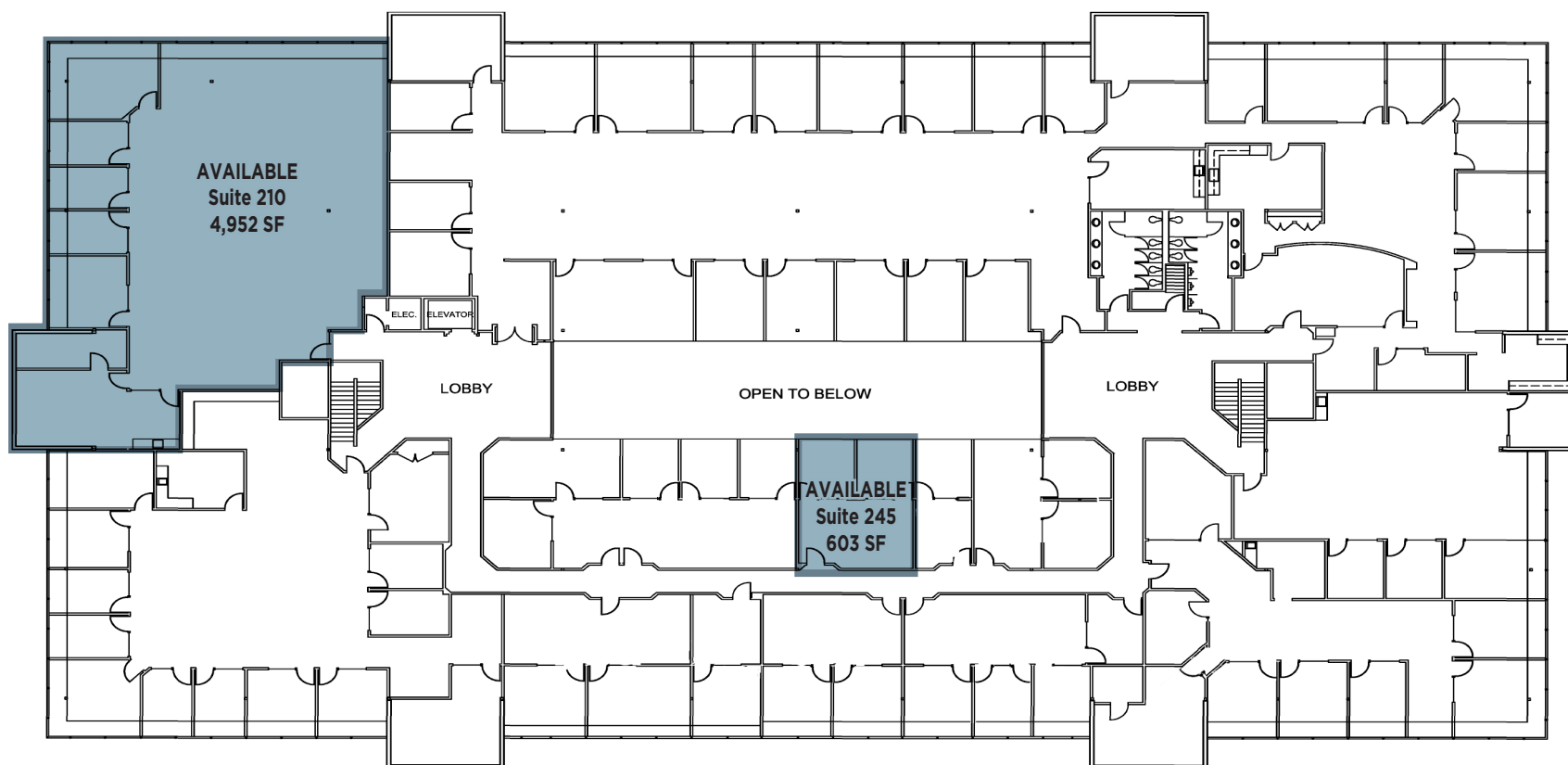


ThriveatStonyPoint.com

**603 - 4,952 RSF**

100 Stony Point Road  
Second Floor

- Suite 210: 4,952 Square Feet
- Suite 245: 603 Square Feet



EXCLUSIVELY MARKETING BY:

**Shawn Johnson**  
707.528.1400 ext. 238

**Dave Peterson**  
707.528.1400 ext. 210

**Brian Keegan**  
707.528.1400 ext. 249



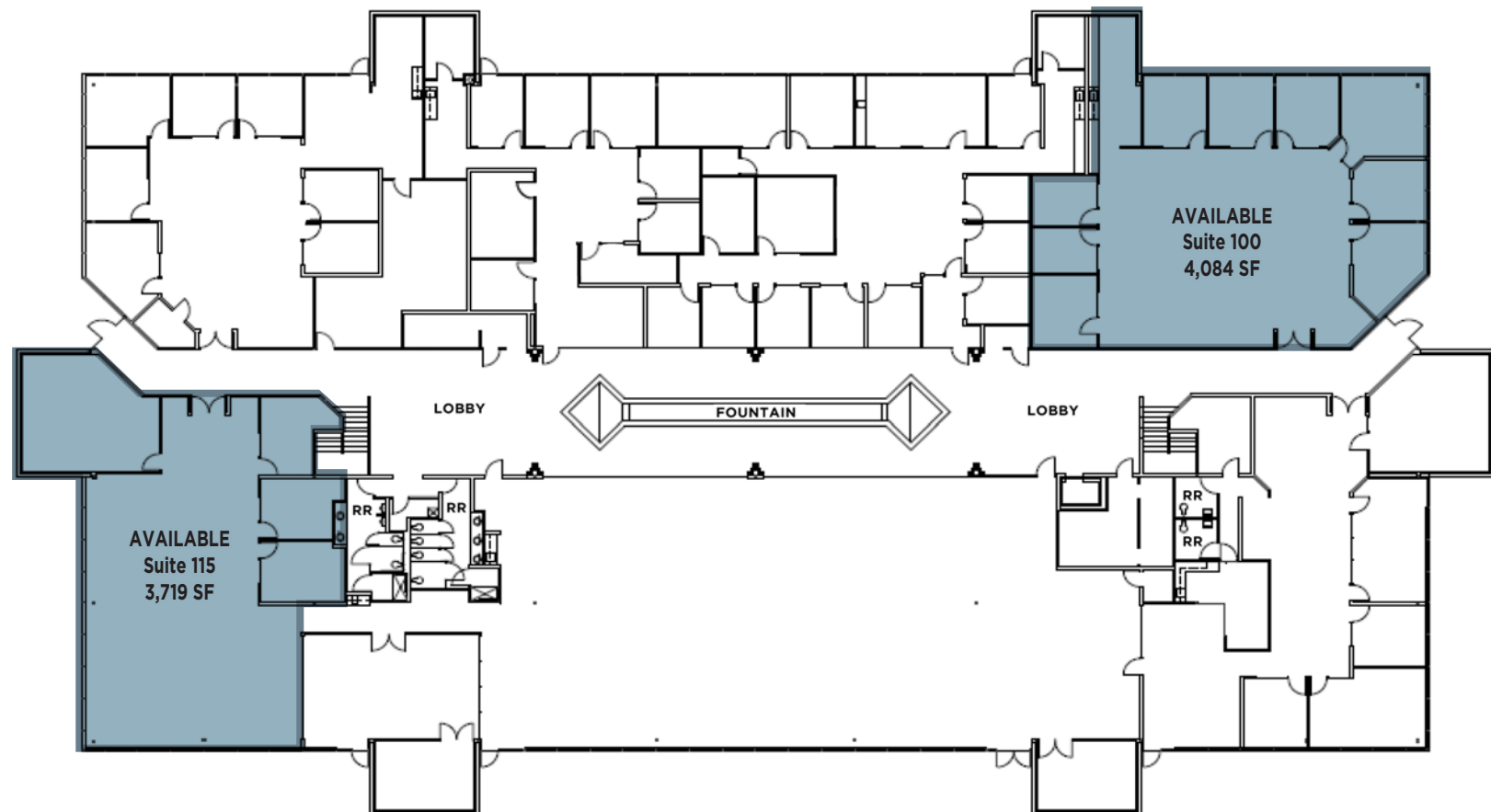
FOR LEASE **Santa Rosa**  
**Stony Point Campus**

ThriveatStonyPoint.com

**3,719 - 4,084 RSF**

110 Stony Point Road  
First Floor

- Suite 110: 4,084 Square Feet
- Suite 115: 3,719 Square Feet



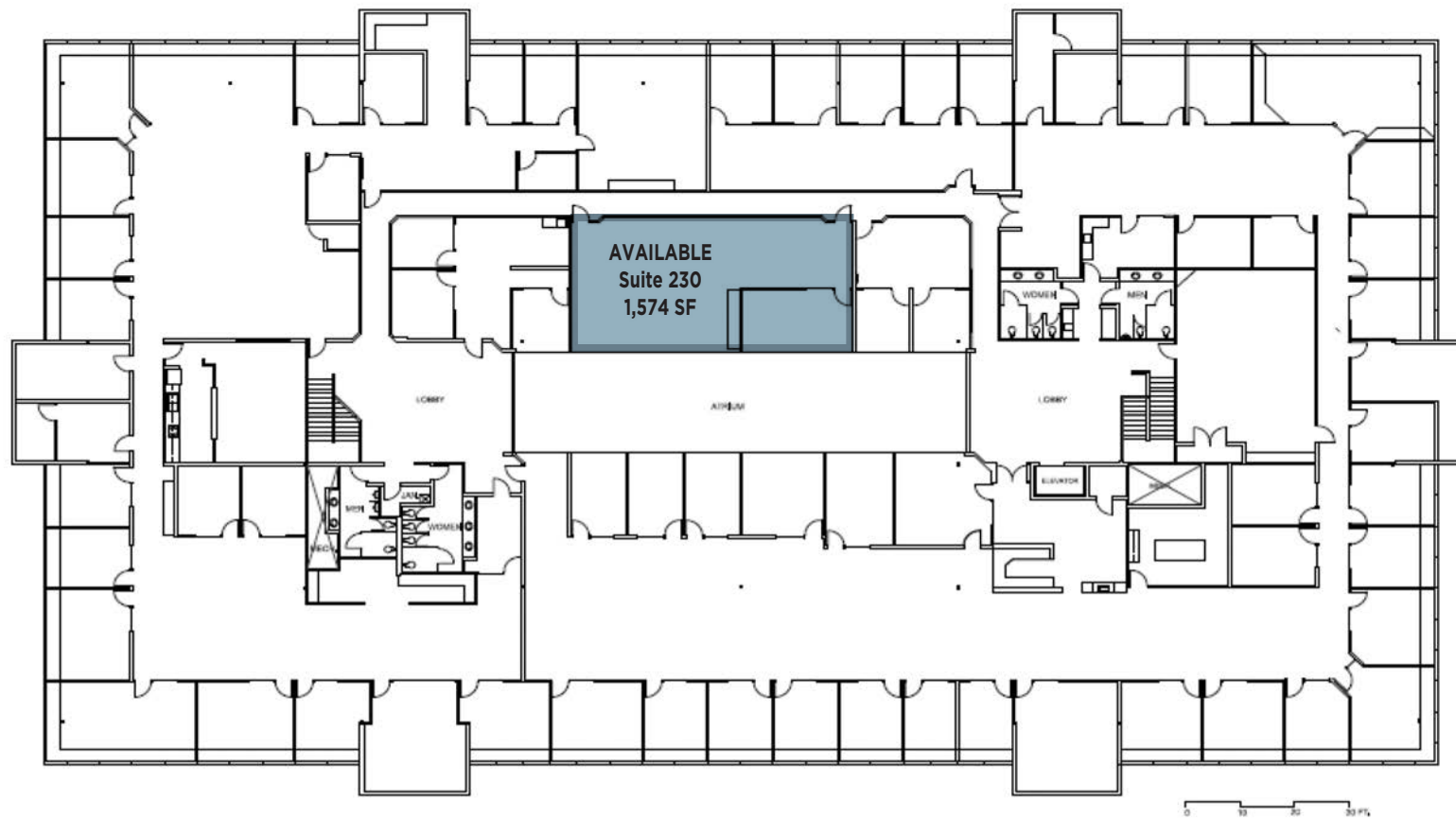
FOR LEASE **Santa Rosa**  
**Stony Point Campus**

ThriveatStonyPoint.com

**1,574 RSF**

110 Stony Point Road  
Second Floor

- Suite 230: 1,574 Square Feet





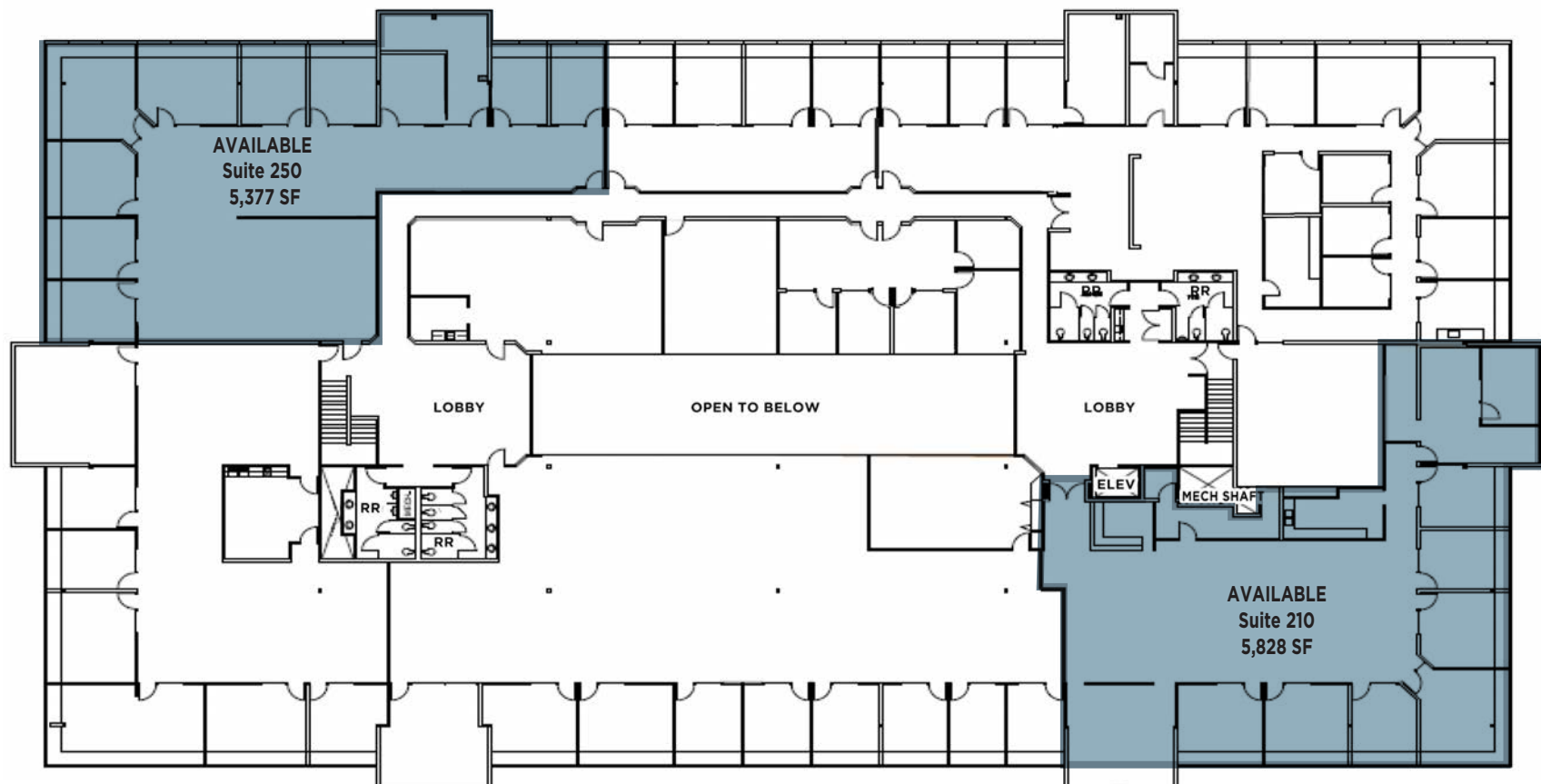
FOR LEASE **Santa Rosa**  
**Stony Point Campus**

ThriveatStonyPoint.com

**5,377 - 5,828 RSF**

120 Stony Point Road  
Second Floor

- Suite 210: 5,828 Square Feet
- Suite 250: 5,377 Square Feet



# FOR LEASE Santa Rosa Stony Point Campus

ThriveatStonyPoint.com

