

1
DB1 First Floor Unit Plan
Scale: 3/32" = 12" Plan View

Interior Doors

Type	Mark	Width	Height	Color (key)	Count
Rollup Series 650	84	8-4	7-0	Orange	Qty-47
Rollup Series 650	8	8-0	7-0	Lt. Blue	Qty-1
Rollup Series 650	34	3-4	7-0	Green	Qty-30
Rollup Series 650	3	3-0	7-0	Pink	Qty-4
Swing Door SR	R	3-0	7-0	Black	Qty-1

82 Total

1 Total

see proposal for door color

Headers

Type - Flush	Mark	Width	Height	Color (key)	Count
Header Panel	-	8-4	1-4	-	Qty-47
Header Panel	-	8-0	1-4	-	Qty-1
Header Panel	-	3-4	1-4	-	Qty-30
Header Panel	-	3-0	1-4	-	Qty-4
Header Panel	-	3-0	1-4	-	Qty-1

Door Frames - Glossy White finish

Type	Mark	Width	Height	Color (key)	Count
Frame Single Rollup	0-10	8-4	-	-	Qty-62
Frame Double Rollup	1-8	8-4	-	-	Qty-51
Frame Double Rollup	-	1-4	8-4	Purple	Qty-2
Frame Single Rollup DMDS	0-10	8-4	-	-	Qty-2

Additional Items

Item	Finish	Count
Angle - Outside Corner Guard	-	Qty-33
Angle - Inside Corner	As Req'd.	-
Angle - End or Start	As Req'd.	-
Security Mesh Roll w/ mtg Angles	-	Qty-10
Seamus Angles (frames to Part'n fill Angle) Glum	-	Qty-53

Wall Schedule

Type	Mark	Width	Height	Finish	Count
Partition - Unit	-	20 inch	x8-4	Galvalume	Qty-439
Partition - Hallway	-	20 inch	x8-4	Glossy Wht	Qty-188
Partition-Hall Liner	-	20 inch	x10-0	Glossy Wht	Qty-35

Kick Plate

Item	Finish	Count
Kick Plate -Aluminum 10LF x 12" hgt.	Alum. D.P.	Qty-37
(provided on all hall walls U.N.O.)		

Unit Mix

Unit Size	Approximate S/F	Count
4 x 3 nominal unit	12SF	Qty - 2
4 x 10 nominal unit	40SF	Qty - 1
5 x 3 nominal unit	15SF	Qty - 2
5 x 5 nominal unit	25SF	Qty - 5
5 x 7.5 nominal unit	37.5SF	Qty - 2
5 x 10 nominal unit	50SF	Qty - 11
5 x 12.5 nominal unit	62.5SF	Qty - 3
8 x 12 nominal unit	96SF	Qty - 1
10 x 3 nominal unit	30SF	Qty - 6
10 x 7.5 nominal unit	75SF	Qty - 3
10 x 10 nominal unit	100SF	Qty - 29
10 x 12.5 nominal unit	125SF	Qty - 2
10 x 15 nominal unit	150SF	Qty - 14
10 x 20 nominal unit	200SF	Qty - 3
Total Units =		83
Net Rentable: ± 7,286.5 sf		

8'-4" FINISHED HALLWAY HEIGHT
1'-4" HEADER HEIGHT

Revision: 10

DBCI
The Power of INNOVATION
The Strength of PARTNERSHIP

DOORS & BUILDING COMPONENTS
4645 Timber Ridge Road
Douglasville, GA 30135
Toll Free 800-542-0501
Phone 770-942-0501
Fax 770-947-5335
sales@dbci.com
www.dbci.com

NOTE TO CLIENT, CUSTOMER OR OWNER
THIS UNIT MIX LAYOUT MAY NOT MEET
SOME LOCAL OR NATIONAL BUILDING CODES. IT IS THE
CUSTOMER'S RESPONSIBILITY TO HAVE THE LAYOUT
CHECKED BY A LOCAL ARCHITECT/ENGINEER TO VERIFY
SIZES AND FINISHES. LOCAL BUILDING CODES MAY VARY
FROM THE NATIONAL AND LOCAL BUILDING CODES.
REVISIONS TO BUILDING DIMENSIONS AND DESCRIPTIONS.

Drawn For: ERIE PLACE ASSOCIATES II, LLC
CONVERSION @ 615 ERE PLACE
615 ERIE PLACE, SYRACUSE, NY

DBCI Print Number
76728

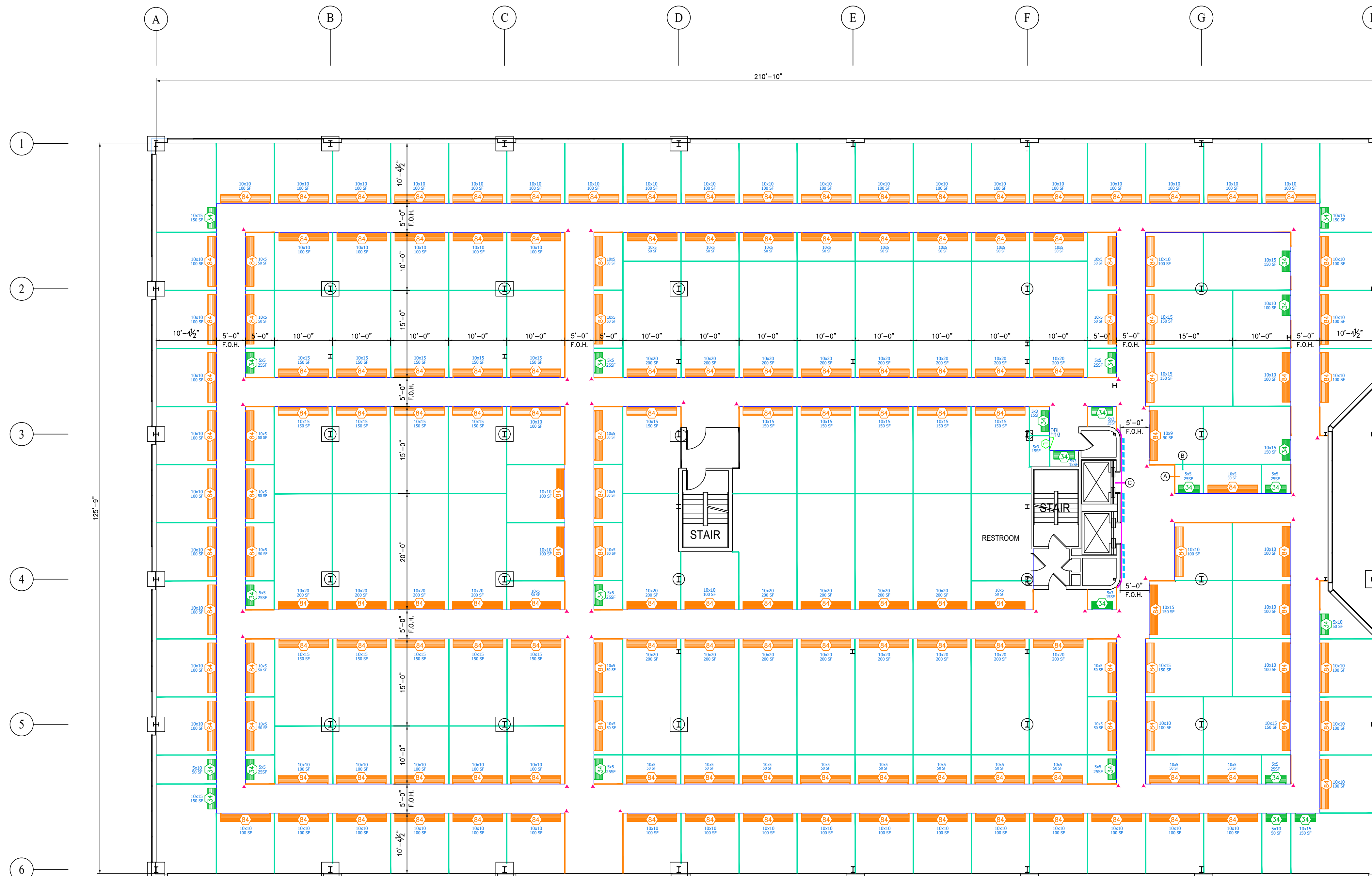
Store Number
-

Rev #	Date
01	11.01.23
02	11.07.23
03	11.07.23
04	11.07.23
05	01.23.24
06	01.23.24
07	01.23.24
08	01.25.24
09	03.01.24
10	03.01.24

Drawn On 10.27.23
Drawn By Nicole D.
Checked By Steve G.

DB1
FIRST FLOOR

© 2022 DBCI ALL RIGHTS RESERVED



1
DB2

Second Floor Unit Plan

Scale: 3/32" = 12" Plan View

Interior Doors

Type	Mark	Width	Height	Color (key)	Count
Rollup Series 650	84	8'-4"	7'-0"	Orange	Qty-162
Rollup Series 650	34	3'-4"	7'-0"	Green	Qty-25
Swing Door	SL	2'-0"	7'-0"	Green	Qty- 1

see proposal for door color

Headers

Type - Flush	Mark	Width	Height	Color (key)	Count
Header Panel	-	8'-4"	1'-4"	-	Qty-162
Header Panel	-	3'-4"	1'-4"	-	Qty-25
Header Panel	-	2'-0"	1'-4"	-	Qty-1

Door Frames - Glossy White finish

Type	Mark	Width	Height	Color (key)	Count
Frame Single Rollup	0-10	8'-4"	-	-	Qty 83
Frame Double Rollup	1-8	8'-4"	-	-	Qty -145
Frame Single Rollup DMDS	0-10	8'-4"	-	-	Qty -1
Frame Double SR DMDS	2-0	8'-4"	-	-	Qty -1

Additional Items

Item	Finish	Count
Angle - Outside Corner Guard		Qty -45
Angle - Inside Corner		As Req'd.
Angle - End or Start		As Req'd.
Security Mesh Roll w/ mtg Angles		Qty-28
Seamus Angles (frames to Part'n fill Angle) Glum		Qty-146

Wall Schedule

Type	Mark	Width	Height	Finish	Count
Partition - Unit	-	20 inch	x8'-4"	Galvalume	Qty-1,463
Partition - Hallway	-	20 inch	x8'-4"	Glossy Wht	Qty-185
Partition-Hall Liner	-	20 inch	x10'-0"	Glossy Wht	Qty-18

Kick Plate

Item	Finish	Count
Kick Plate -Aluminum 10LF x 12" hgt.	Alum. D.P.	Qty -32
(provided on all hall walls U.N.O.)		
Rubber Strip	-	L/F -20
Wainscot-Aluminum 10LF x 48" hgt.	Alum. D.P.	Qty -2

Unit Mix

Unit Size	Approximate S/F	Count
5 x 3 nominal unit	15SF	Qty - 5
5 x 5 nominal unit	25SF	Qty - 11
10 x 5 nominal unit	50SF	Qty - 42
10 x 9 nominal unit	90SF	Qty - 11
10 x10 nominal unit	100SF	Qty - 73
10 x15 nominal unit	150SF	Qty - 31
10 x20 nominal unit	200SF	Qty - 25
Total Units =		188
	Net Rentable: ± 19,490 sf	

**8'-4" FINISHED HALLWAY HEIGHT
1'-4" HEADER HEIGHT**



DOORS & BUILDING COMPONENTS
4645 Timber Ridge Road
Douglasville, GA 30135
Toll Free 800-542-0501
Phone 770-942-0501
Fax 770-947-5335
sales@dbci.com
www.dbci.com

NOTE TO CLIENT, CUSTOMER OR OWNER
THIS UNIT MIX LAYOUT MAY NOT MEET
SOME LOCAL OR NATIONAL BUILDING CODES. IT IS THE
CUSTOMER'S RESPONSIBILITY TO HAVE THE LAYOUT
CHECKED BY A LICENSED ARCHITECT/ENGINEER TO VERIFY
SIZES AND FINISHES. LOCAL BUILDING DEPARTMENT MAY NOT
REQUIRE OR BUILDING, DIMENSIONS AND DESCRIPTIONS.

Drawn For: **ERIE PLACE ASSOCIATES II, LLC**
CONVERSION @ 615 ERIE PLACE
615 ERIE PLACE, SYRACUSE, NY

DBCI Print Number
76728

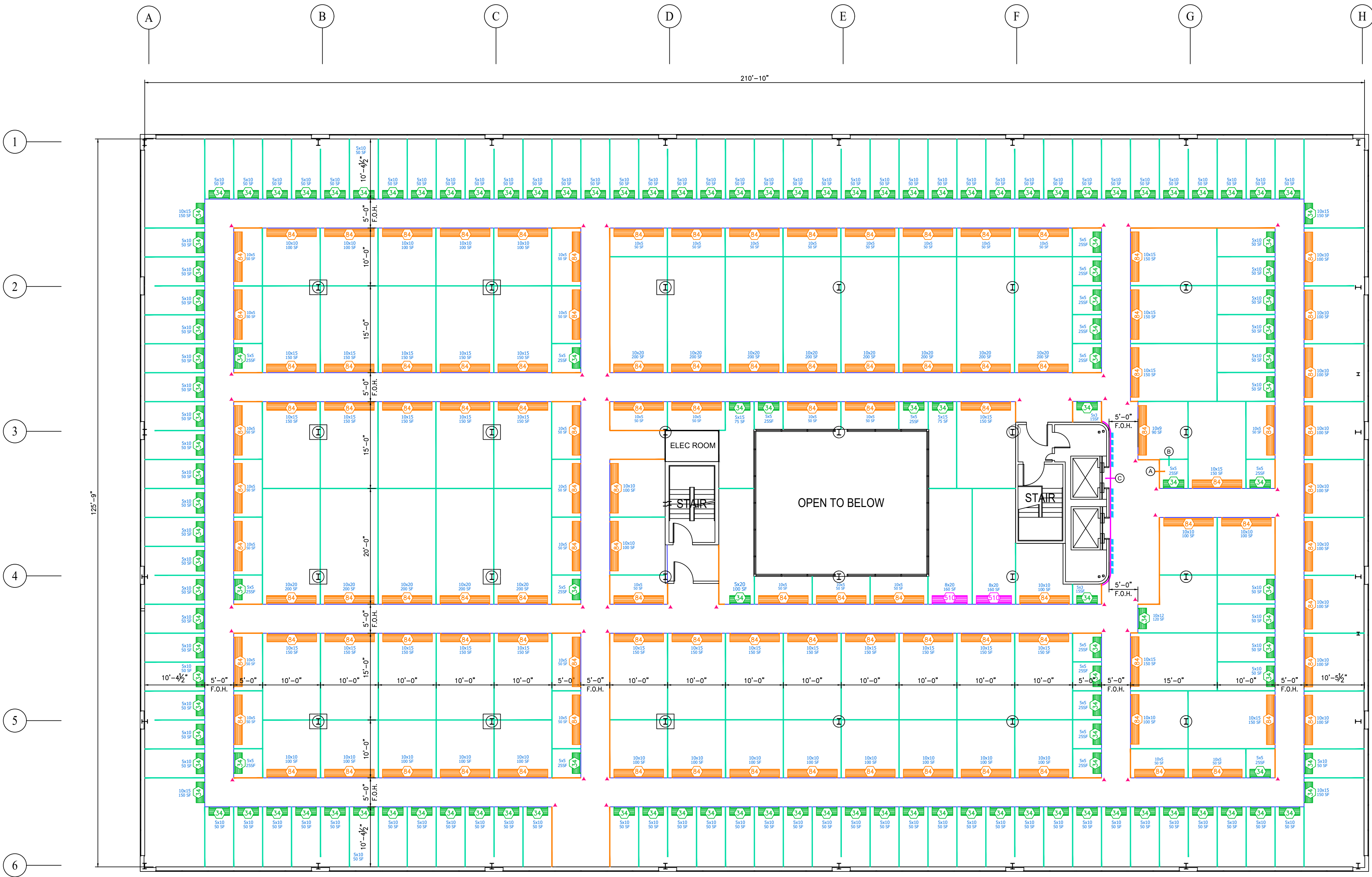
Store Number
-

Rev #	Date
01	11.01.23
02	11.07.23
03	11.07.23
04	11.07.23
05	01.23.24
06	01.23.24
07	01.23.24
08	01.25.24
09	03.01.24
10	03.01.24

Drawn On 10.27.23
Drawn By Nicole D.
Checked By Steve G.

DB2
SECOND FLOOR

Color Coded Drawing- Plot/Print in Color



1 Third Floor Unit Plan
 DB3 Scale: 3/32" = 12" Plan View

247 Total

Interior Doors					
Type	Mark	Width	Height	Color (key)	Count
Rollup Series 650	84	8-4	x 7-0	Orange	Qty-110
Rollup Series 650	510	5-10	x 7-0	Magenta	Qty-2
Rollup Series 650	34	3-4	x 7-0	Green	Qty-135

see proposal for door color

Headers					
Type - Flush	Mark	Width	Height	Color (key)	Count
Header Panel	-	8-4	x 1-4	-	Qty-110
Header Panel	-	5-10	x 1-4	-	Qty-2
Header Panel	-	3-4	x 1-4	-	Qty-135

Door Frames - Glossy White finish					
Type	Mark	Width	Height	Color (key)	Count
Frame Single Rollup	0-10	x 8-4	-	-	Qty -74
Frame Double Rollup	1-8	x 8-4	-	-	Qty -210

Additional Items		
Item	Finish	Count
Angle - Outside Corner Guard		Qty -42
Angle - Inside Corner	As Req'd	
Angle - End or Start	As Req'd	
Security Mesh Roll w/ mtg Angles		Qty-28
Seamless Angles (frames to Part'n fill Angle) Glum		Qty-210

Wall Schedule					
Type	Mark	Width	Height	Finish	Count
Partition - Unit	-	20 inch	x8-4	Galvalume	Qty-1,733
Partition - Hallway	-	20 inch	x8-4	Glossy Wht	Qty-175
Partition-Hall Liner	-	20 inch	x10-0	Glossy Wht	Qty-19

Kick Plate		
Item	Finish	Count
Kick Plate -Aluminum 10LF x 12" hgt. Alum. D.P.		Qty -30
(provided on all hall walls U.N.O.)		
Rubber Strip	-	L/F -20
Wainscot-Aluminum 10LF x 48" hgt. Alum. D.P.		Qty -2

Unit Mix		
Unit Size	Approximate S/F	Count
5 x 3 nominal unit	15SF	Qty - 2
5 x 5 nominal unit	25SF	Qty - 21
5 x 10 nominal unit	50SF	Qty - 137
5 x 15 nominal unit	75SF	Qty - 2
5 x 20 nominal unit	100SF	Qty - 1
8 x 20 nominal unit	160SF	Qty - 2
10 x 9 nominal unit	90SF	Qty - 1
10 x 10 nominal unit	100SF	Qty - 33
10 x 12 nominal unit	120SF	Qty - 1
10 x 15 nominal unit	150SF	Qty - 34
10 x 20 nominal unit	200SF	Qty - 13
Total Units =		247
Net Rentable: ± 19,185 sf		



DOORS & BUILDING COMPONENTS
 4645 Timber Ridge Road
 Douglasville, GA 30135
 Toll Free 800-542-0501
 Phone 770-942-0501
 Fax 770-947-5335
 sales@dbci.com
 www.dbci.com

NOTE TO CLIENT, CUSTOMER OR OWNER
 THIS UNIT MIX LAYOUT MAY NOT MEET THE LOCAL OR NATIONAL BUILDING CODES. IT IS THE CUSTOMER'S RESPONSIBILITY TO HAVE THE LAYOUT CHECKED BY A LICENSED ARCHITECT/ENGINEER TO VERIFY IT MEETS ALL LOCAL CODES INCLUDING EGRESS. UNIT TYPES ARE NOMINAL AND SUBJECT TO CHANGE WITHOUT NOTICE OR BUILDING DIMENSIONS AND DESCRIPTIONS.

Drawn For: ERIE PLACE ASSOCIATES II, LLC
CONVERSION @ 615 ERE PLACE
 615 ERIE PLACE, SYRACUSE, NY

DBCI Print Number
76728

Store Number
 -

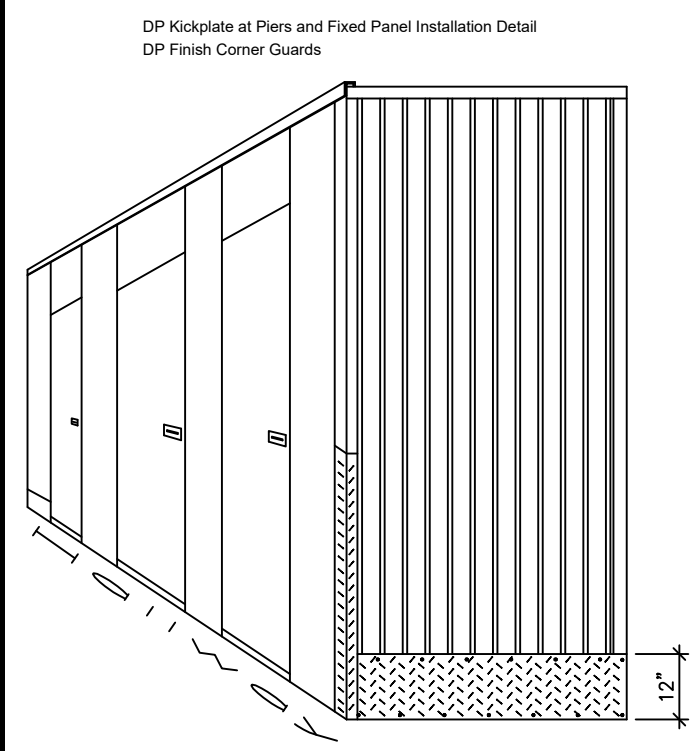
Rev #	Date
01	11.01.23
02	11.07.23
03	11.07.23
04	11.07.23
05	01.23.24
06	01.23.24
07	01.23.24
08	01.25.24
09	03.01.24
10	03.01.24

Drawn On 10.27.23
 Drawn By Nicole D.
 Checked By Steve G.

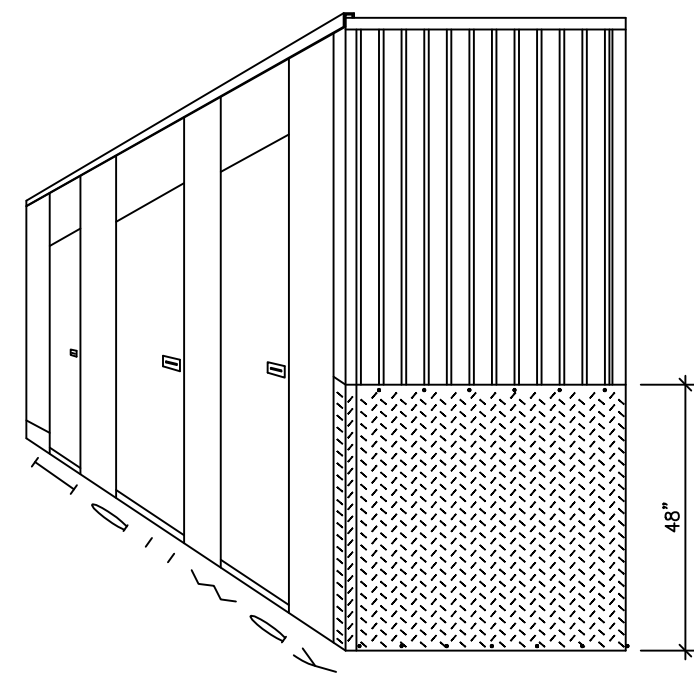
8'-4" FINISHED HALLWAY HEIGHT
 1'-4" HEADER HEIGHT

Color Coded Drawing- Plot/Print in Color

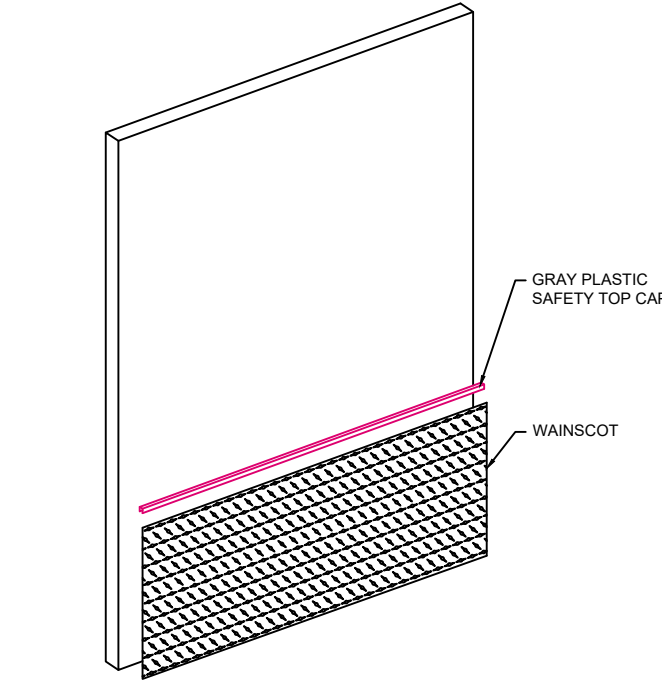
DB3
 THIRD FLOOR



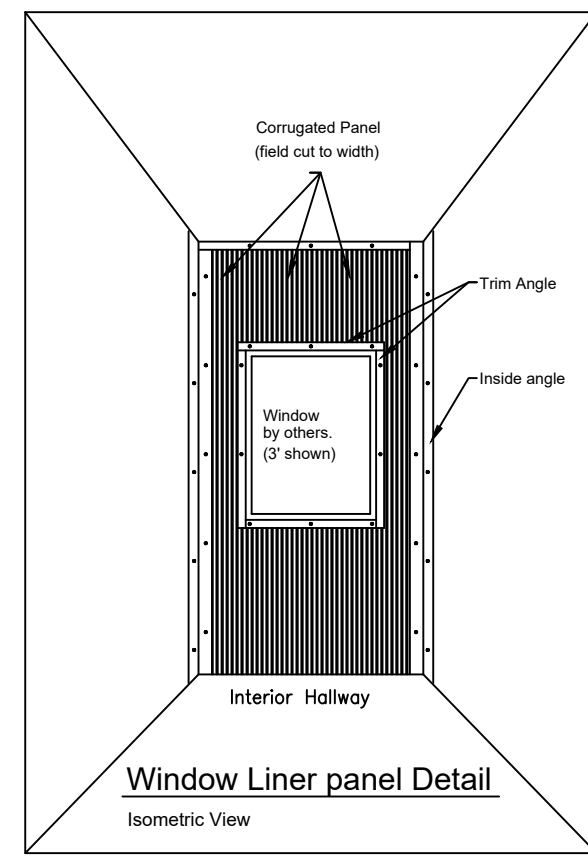
Kickplate & Cornerguard at Corr. Panel Detail
Isometric View



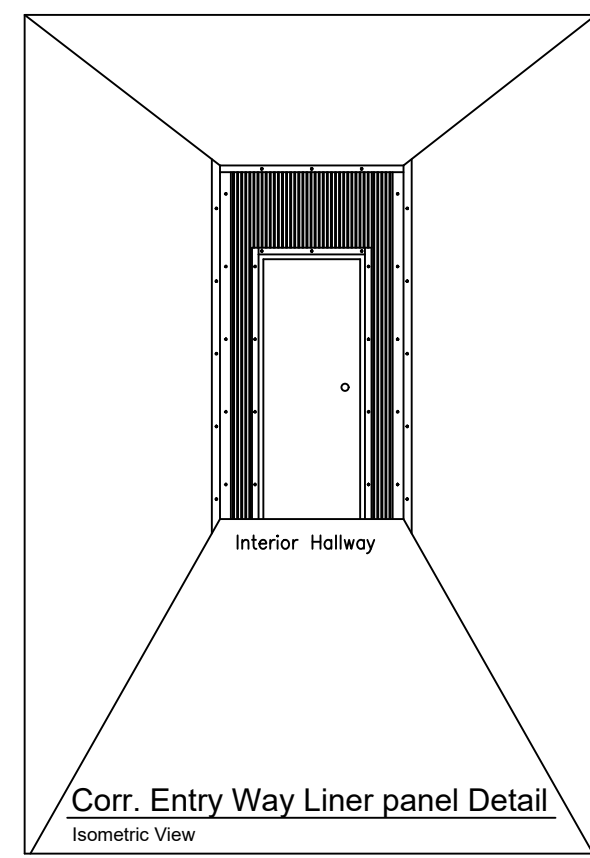
Wainscot & Cornerguard at Corr. Panel Detail
Isometric View



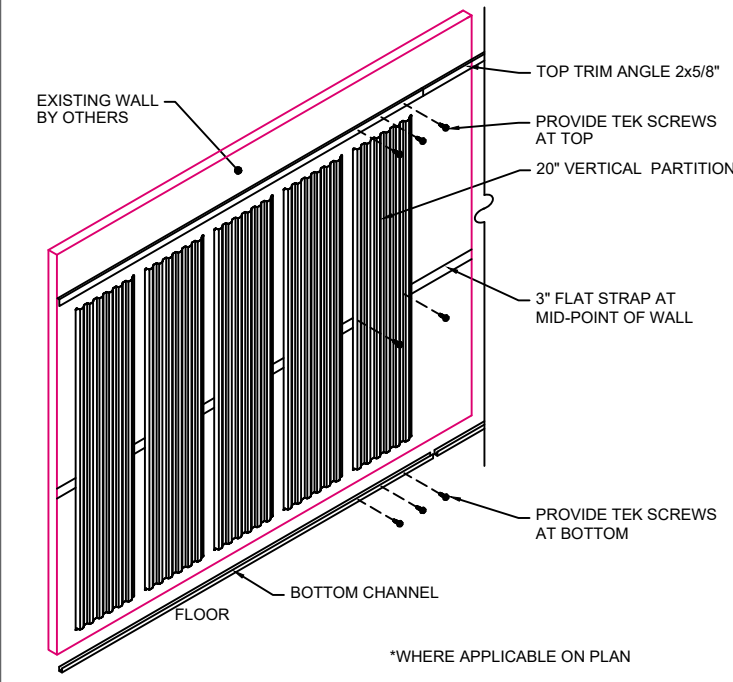
Safety Top Cap attachment to Wainscot Detail
Isometric View



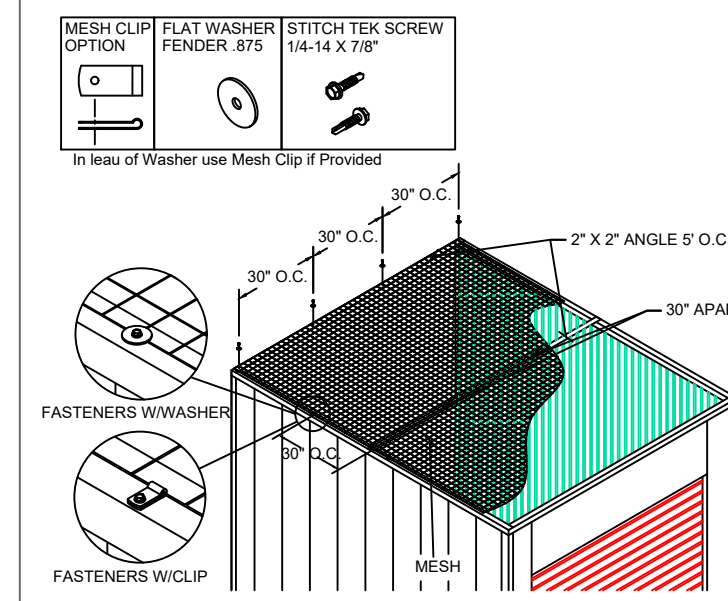
Window Liner panel Detail
Isometric View



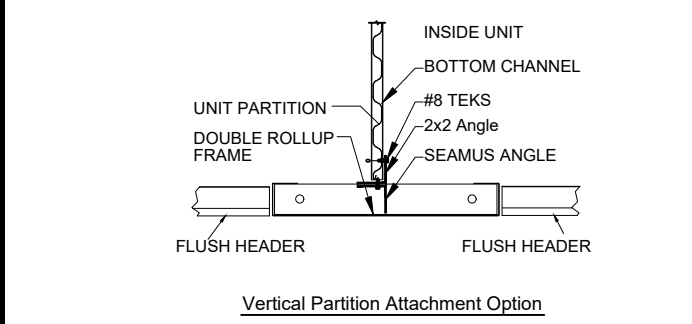
Corr. Entry Way Liner panel Detail
Isometric View



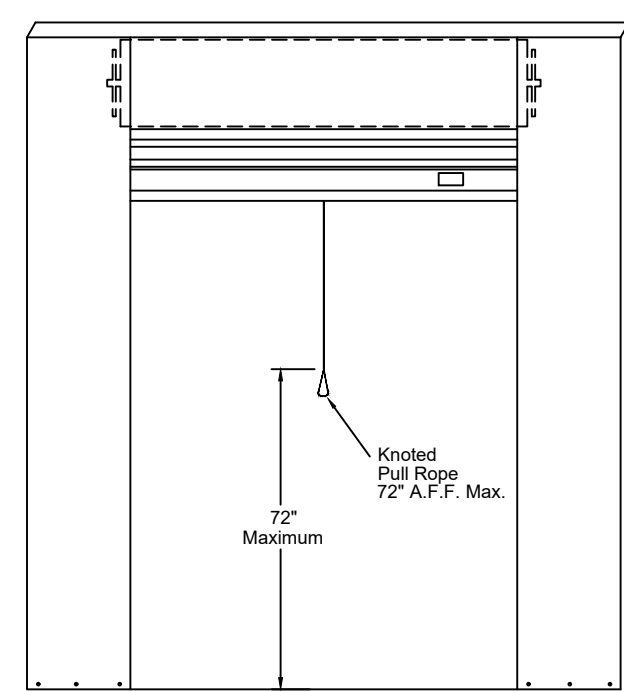
Liner attachment to wall Detail
Isometric View



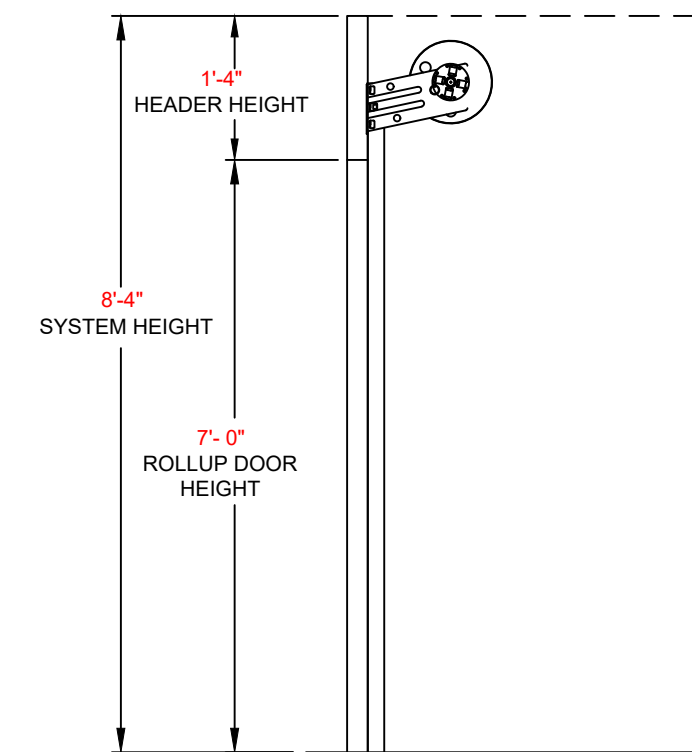
Security Mesh Detail
Isometric View



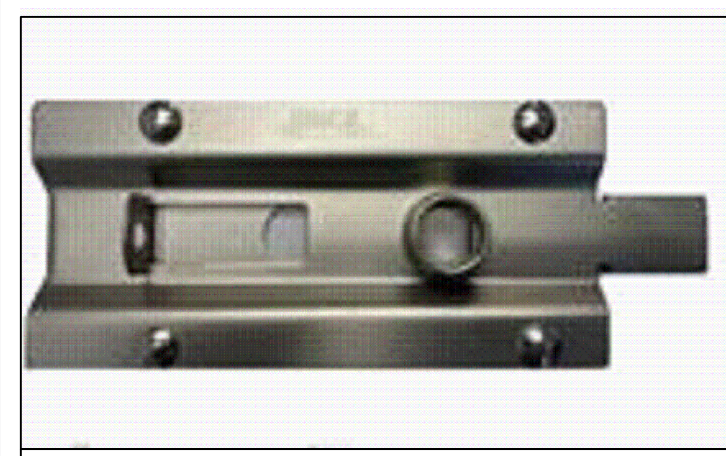
Seamus Angle Attachment
Plan View



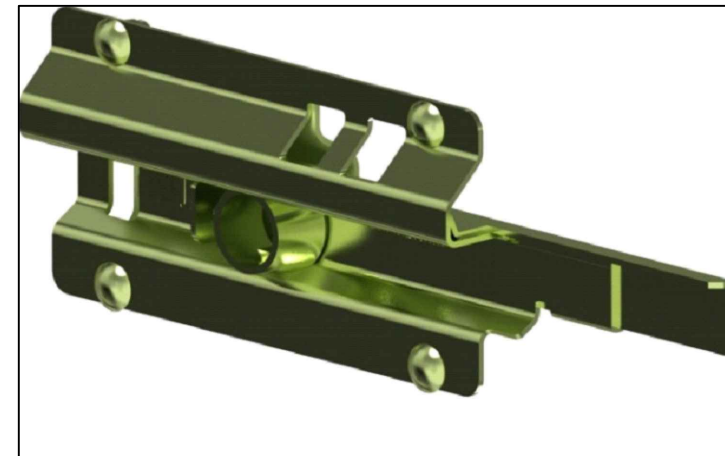
Rollup door Pull Rope measure
Elevation



8'-4" FINISHED HALLWAY HEIGHT
1'-4" HEADER HEIGHT



Latch, Mini, Dbc, Standard Bezel



Latch, Mini, JBTBS, MDS, YZ (JBI-MDS)

KEY

- B = PARTITION SHEET. 20" VERTICAL
- C = PARTITION X-BRACING SHEET. 20" VERTICAL
- D = PARTITION LINER SHEET. 20" VERTICAL
- E = PARTITION LINER (INSULATED WALL) SHEET 20" VERTICAL
- A = 20" CORRUGATED WHITE HALLWAY PANEL
- P = 20" CORRUGATED WHITE LINER PANEL
- C = 12" FLUSH WHITE PANEL
- F = 12" FLUSH WHITE LINER PANEL
- = JANUS HALLWAY SYSTEM
- = EXISTING BUILDING
- ▲ = OUTSIDE CHAMFERED CORNER
- ◆ = ANGLE - INSIDE CORNER
- + = ANGLE - START/END ANGLE
- ▲ = OUTSIDE CORNER GUARD
- R = INTERIOR SWING DOOR - RIGHT HAND
- L = INTERIOR SWING DOOR - LEFT HAND
- = ROLLUP DOOR - INTERIOR
[SEE PLAN SCHEDULE FOR SPECIFIC SIZES]
- = COLUMN COVER
- = PIPE WRAPS
- = ADA UNIT
- FEC = FIRE EXTINGUISHER CABINET
- F.O.H. = FACE OF HALL
- = 4'-0" HIGH WAINSCOT
- Step = STEP DOWN
- B4-68 = 4" HEADER BRIDGE CEE
- = LIGHT FIXTURE
- = MOTION SENSOR
- EXIT = EXIT SIGN
- = SOFFIT



DOORS & BUILDING COMPONENTS
4645 Timber Ridge Road
Douglasville, GA 30135
Toll Free 800-542-0501
Phone 770-942-0501
Fax 770-947-5335
sales@dbci.com
www.dbci.com

NOTE TO CLIENT, CUSTOMER OR OWNER
THIS UNIT LAYOUT MAY NOT MEET SOME LOCAL OR NATIONAL BUILDING CODES. IT IS THE CUSTOMER'S RESPONSIBILITY TO HAVE THE LAYOUT CHECKED BY A LICENSED ARCHITECT/ENGINEER TO VERIFY THAT IT MEETS ALL LOCAL CODES INCLUDING EGRESS. UNIT SIZES ARE NOMINAL AND ACTUAL DIMENSIONS MAY VARY DEPENDING ON BUILDING DIMENSIONS AND DESCRIPTIONS.

Drawn For: ERIE PLACE ASSOCIATES II, LLC
CONVERSION @ 615 ERE PLACE
615 ERIE PLACE, SYRACUSE, NY

DBCI Print Number
76728

Store Number
-

Rev #	Date
01	11.01.23
02	11.07.23
03	11.07.23
04	11.07.23
05	01.23.24
06	01.23.24
07	01.23.24
08	01.25.24
09	03.01.24
10	03.01.24

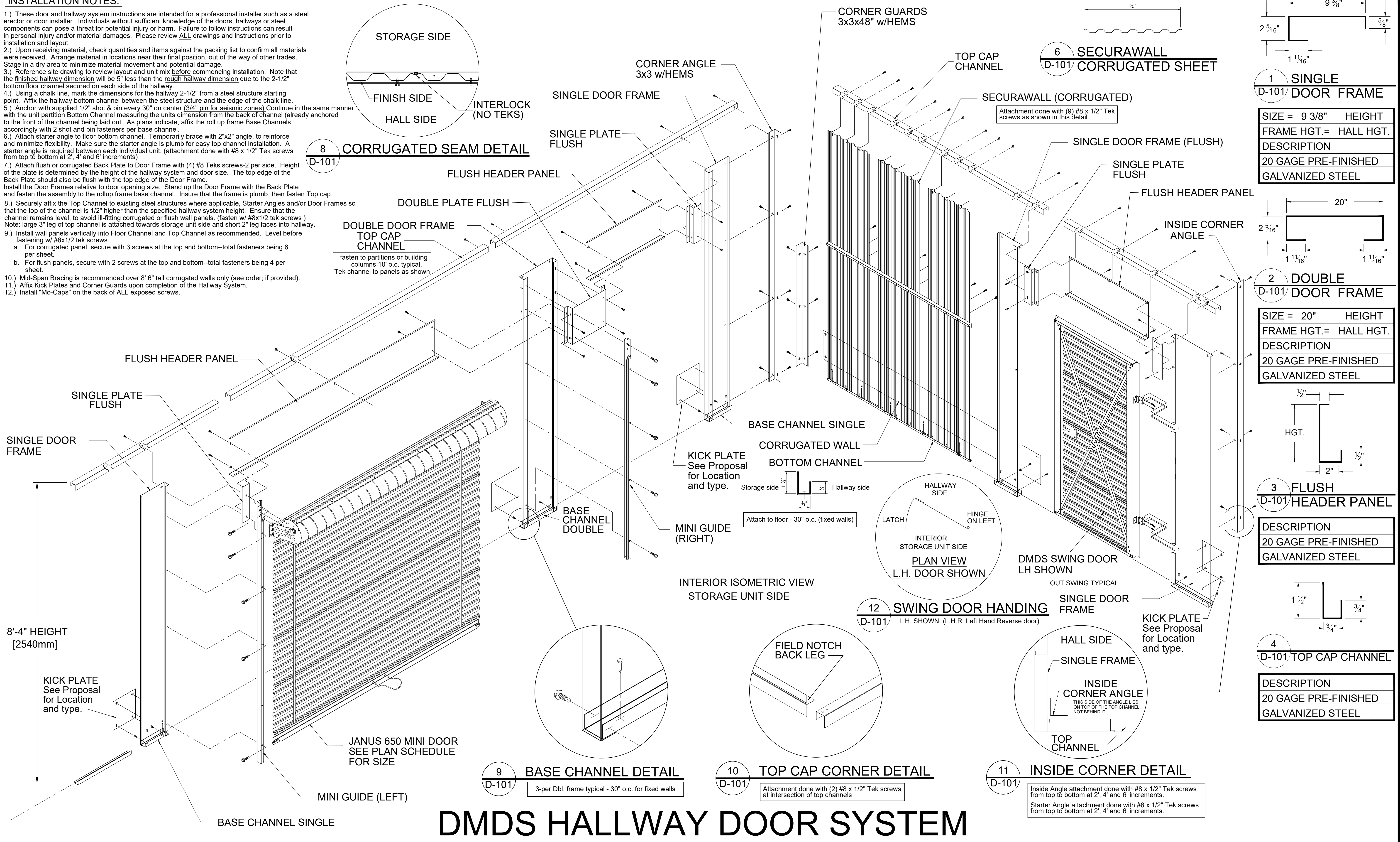
Drawn On 10.27.23
Drawn By Nicole D.
Checked By Steve G.

D100
OPTIONS

This drawing is provided as a conceptual or illustrative layout only. DBCI has provided this for conceptual review and makes no representation or warranty as to its accuracy or completeness. Prior to submission to any governing municipality, this plan should be reviewed, amended as needed, and approved by an appropriately licensed architect as required by law. All rights reserved. No part of this document may be reproduced or transmitted in any form or by any means without written permission of DBCI.

INSTALLATION NOTES:

- 1.) These door and hallway system instructions are intended for a professional installer such as a steel erector or door installer. Individuals without sufficient knowledge of the doors, hallways or steel components can pose a threat for potential injury or harm. Failure to follow instructions can result in personal injury and/or material damages. Please review ALL drawings and instructions prior to installation and layout.
- 2.) Upon receiving material, check quantities and items against the packing list to confirm all materials were received. Arrange material in locations near their final position, out of the way of other trades. Stage in a dry area to minimize material movement and potential damage.
- 3.) Reference site drawing to review layout and unit mix before commencing installation. Note that the finished hallway dimension will be 5" less than the rough hallway dimension due to the 2-1/2" bottom floor channel secured on each side of the hallway.
- 4.) Using a chalk line, mark the dimensions for the hallway 2-1/2" from a steel structure starting point. Affix the hallway bottom channel between the steel structure and the edge of the chalk line.
- 5.) Anchor with supplied 1/2" shot & pin every 30" on center (3/4" pin for seismic zones). Continue in the same manner with the unit partition Bottom Channel measuring the units dimension from the back of channel (already anchored to the front of the channel being laid out. As plans indicate, affix the roll up frame Base Channels accordingly with 2 shot and pin fasteners per base channel.
- 6.) Attach starter angle to floor bottom channel. Temporarily brace with 2"x2" angle, to reinforce and minimize flexibility. Make sure the starter angle is plumb for easy top channel installation. A starter angle is required between each individual unit. (attachment done with #8 x 1/2" Tek screws from top to bottom at 2', 4' and 6' increments)
- 7.) Attach flush or corrugated Back Plate to Door Frame with (4) #8 Tek screws-2 per side. Height of the plate is determined by the height of the hallway system and door size. The top edge of the Back Plate should also be flush with the top edge of the Door Frame. Install the Door Frames relative to door opening size. Stand up the Door Frame with the Back Plate and fasten the assembly to the rollup frame base channel. Insure that the frame is plumb, then fasten Top cap.
- 8.) Securely affix the Top Channel to existing steel structures where applicable, Starter Angles and/or Door Frames so that the top of the channel is 1/2" higher than the specified hallway system height. Ensure that the channel remains level, to avoid ill-fitting corrugated or flush wall panels. (fasten w/ #8x1/2 tek screws) Note: large 3" leg of top channel is attached towards storage unit side and short 2" leg faces into hallway.
- 9.) Install wall panels vertically into Floor Channel and Top Channel as recommended. Level before fastening w/ #8x1/2 tek screws.
 - a. For corrugated panel, secure with 3 screws at the top and bottom--total fasteners being 6 per sheet.
 - b. For flush panels, secure with 2 screws at the top and bottom--total fasteners being 4 per sheet.
- 10.) Mid-Span Bracing is recommended over 8' 6" tall corrugated walls only (see order, if provided).
- 11.) Affix Kick Plates and Corner Guards upon completion of the Hallway System.
- 12.) Install "Mo-Caps" on the back of ALL exposed screws.



8'-4" HEIGHT [2540mm]

KICK PLATE See Proposal for Location and type.

JANUS 650 MINI DOOR SEE PLAN SCHEDULE FOR SIZE

MINI GUIDE (LEFT)

BASE CHANNEL SINGLE

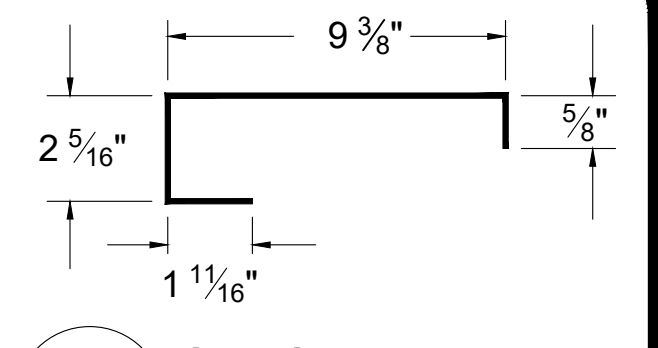
FLUSH HEADERS & CORRUGATED SECUREWALL (FIXED WALLS)

8'-4" FINISHED HALLWAY HEIGHT

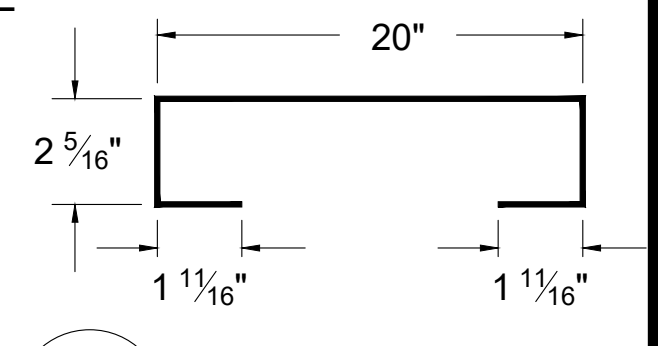
UNLESS NOTED OTHERWISE ON PLAN

<p>TEKS SCREW #8 X 1/2" (HALLWAY)</p>	<p>PERCUSSION 1/2" FASTENERS (FLOOR)</p>	<p>STITCH TEK SCREW 1/4-14 X 7/8" (ROLL UP)</p>	<p>1/4-20 X 1" PHILLIPS FLATHEAD HINGE SCREW (SWING DOOR)</p>
--	---	--	--

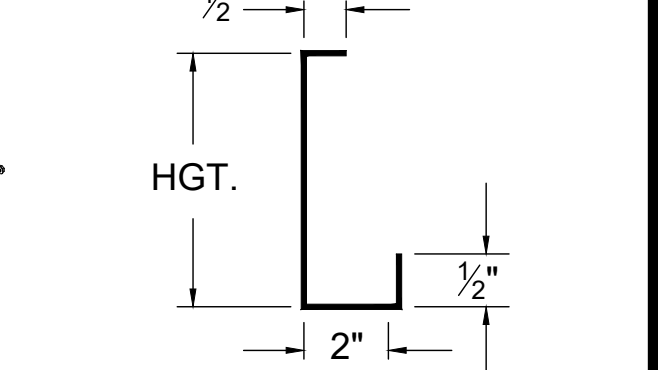
- General Notes:**
- 1.) Factory prefinished Glossy White frames and headers standard.
 - 2.) Non Load bearing hallway storage unit system shown.



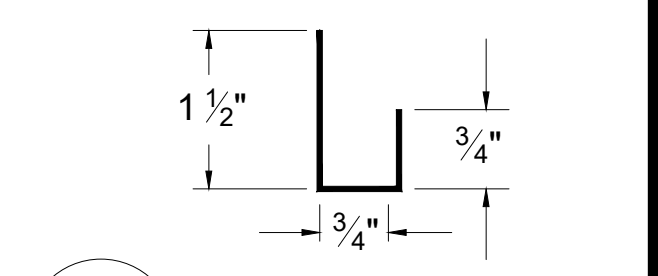
1	SINGLE DOOR FRAME
D-101	
SIZE = 9 3/8"	HEIGHT
FRAME HGT. = HALL HGT.	
DESCRIPTION	
20 GAGE PRE-FINISHED GALVANIZED STEEL	



2	DOUBLE DOOR FRAME
D-101	
SIZE = 20"	HEIGHT
FRAME HGT. = HALL HGT.	
DESCRIPTION	
20 GAGE PRE-FINISHED GALVANIZED STEEL	



3	FLUSH HEADER PANEL
D-101	
DESCRIPTION	
20 GAGE PRE-FINISHED GALVANIZED STEEL	



4	TOP CAP CHANNEL
D-101	
DESCRIPTION	
20 GAGE PRE-FINISHED GALVANIZED STEEL	



DOORS & BUILDING COMPONENTS
4645 Timber Ridge Road
Douglasville, GA 30135
Toll Free 800-542-0501
Phone 770-942-0501
Fax 770-947-5335
sales@dbci.com
www.dbci.com

NOTE TO CLIENT, CUSTOMER OR OWNER: THIS UNIT MIX LAYOUT MAY NOT MEET SOME LOCAL OR NATIONAL BUILDING CODES. IT IS THE CUSTOMER'S RESPONSIBILITY TO HAVE THE LAYOUT CHECKED BY A LICENSED ARCHITECT/ENGINEER TO VERIFY THAT IT MEETS ALL LOCAL CODES INCLUDING ENERGY EFFICIENCY REQUIREMENTS. UNLESS OTHERWISE NOTED, THIS DRAWING IS FOR INFORMATIONAL PURPOSES ONLY. IT IS NOT A CONTRACT DOCUMENT. THE CONTRACTOR SHALL BE RESPONSIBLE FOR OBTAINING ALL NECESSARY PERMITS AND APPROVALS.

Drawn For: **ERIE PLACE ASSOCIATES II, LLC**
CONVERSION @ 615 ERE PLACE
615 ERIE PLACE, SYRACUSE, NY

DBCI Print Number **76728**

Store Number **-**

Rev #	Date
01	11.01.23
02	11.07.23
03	11.07.23
04	11.07.23
05	01.23.24
06	01.23.24
07	01.23.24
08	01.25.24
09	03.01.24
10	03.01.24

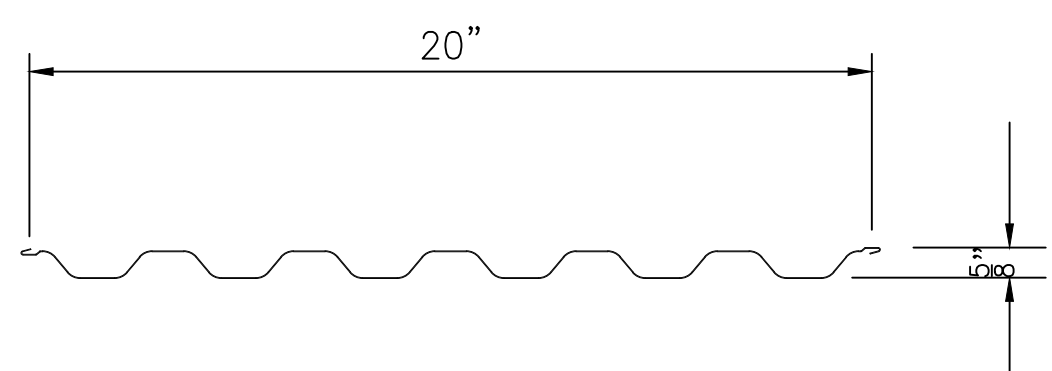
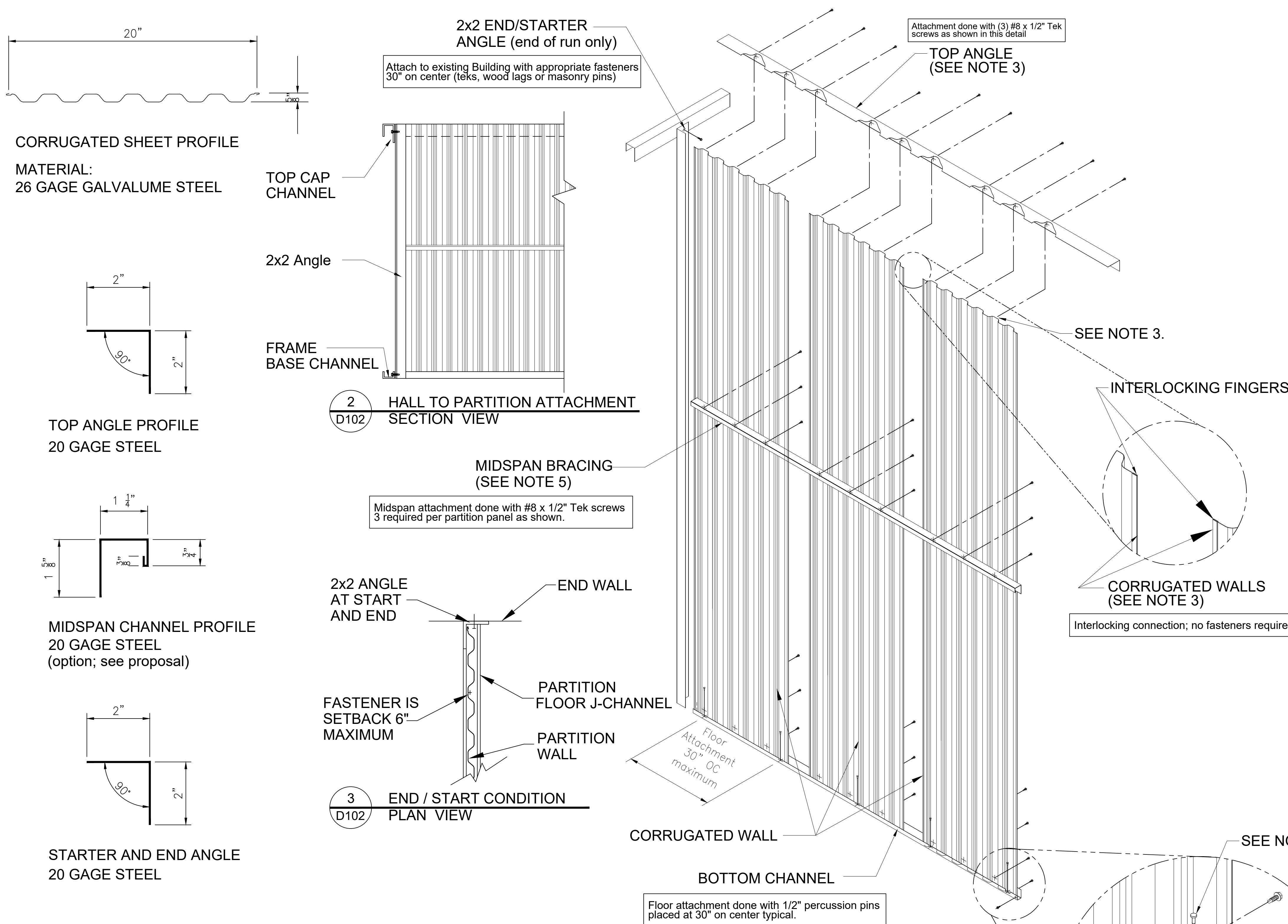
Drawn On 10.27.23

Drawn By Nicole D.

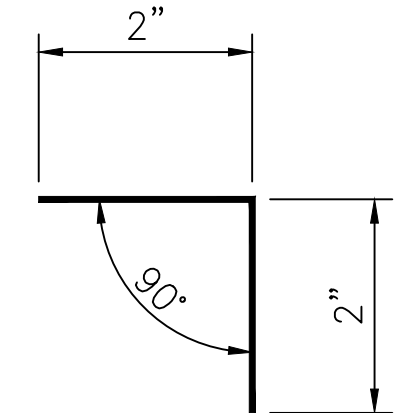
Checked By Steve G.

D101

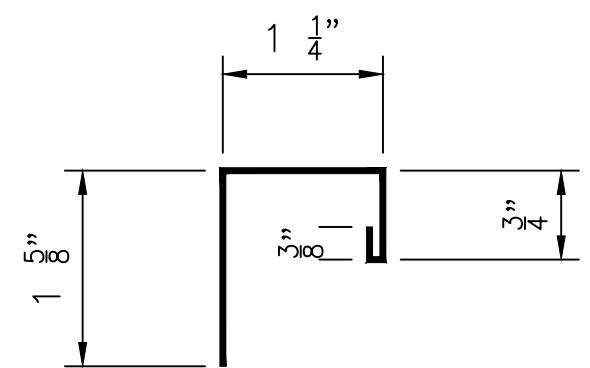
HALLWAY DETAIL



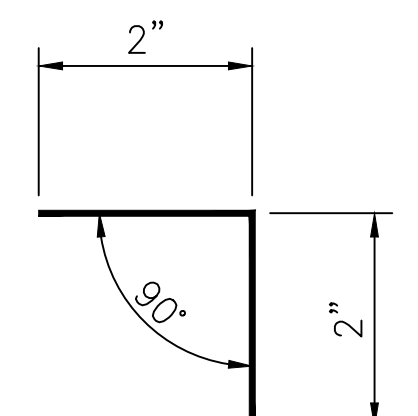
CORRUGATED SHEET PROFILE
MATERIAL:
26 GAGE GALVALUME STEEL



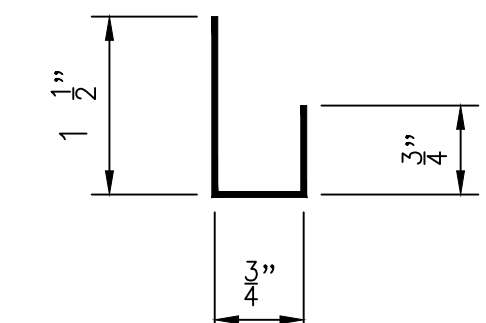
TOP ANGLE PROFILE
20 GAGE STEEL



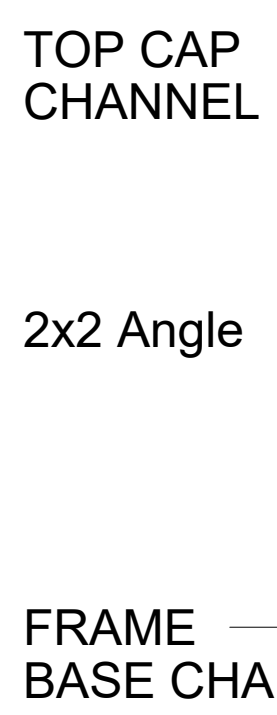
MIDSPAN CHANNEL PROFILE
20 GAGE STEEL
(option; see proposal)



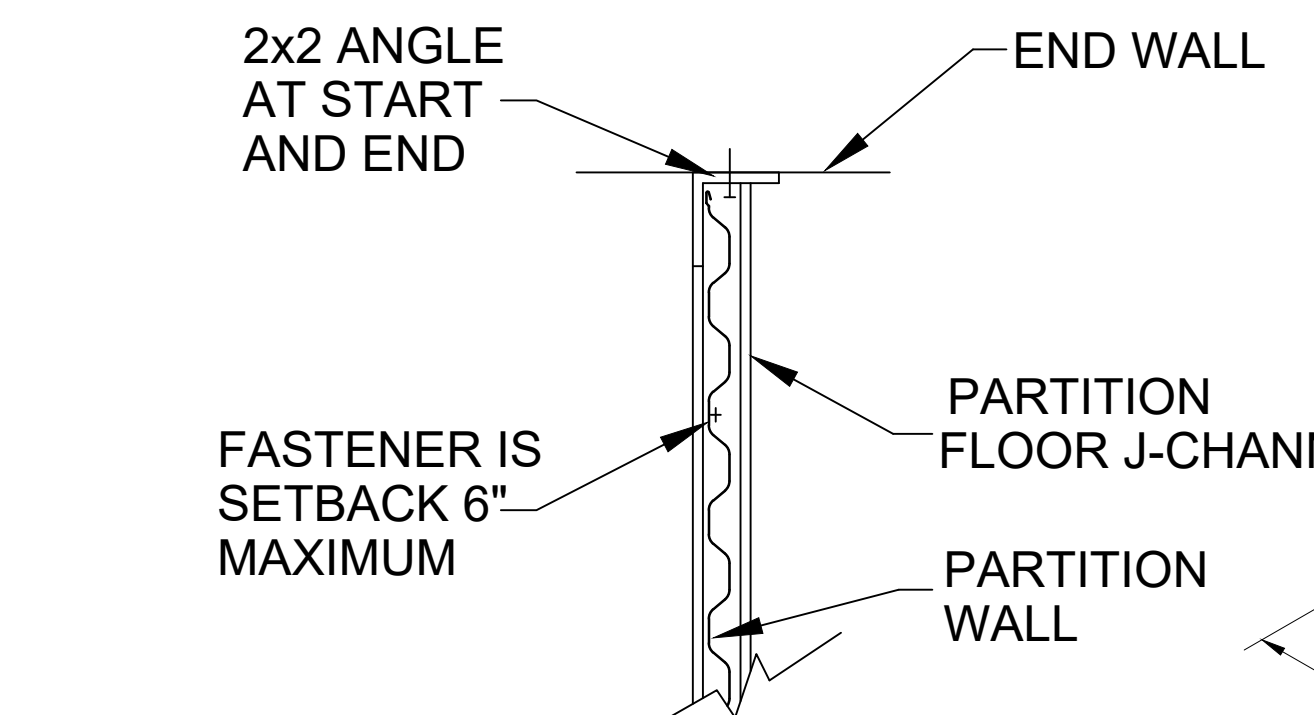
STARTER AND END ANGLE
20 GAGE STEEL



BOTTOM CHANNEL PROFILE
20 GAGE STEEL



2 D102 HALL TO PARTITION ATTACHMENT SECTION VIEW



3 D102 END / START CONDITION PLAN VIEW

1 D102

Unit Dividing Partition Assembly

NON LOAD BEARING

<p>TEKS SCREW #8 X 1/2" (HALLWAY)</p>	<p>PERCUSSION 1/2" FASTENERS (FLOOR)</p>
---	--

General Notes:

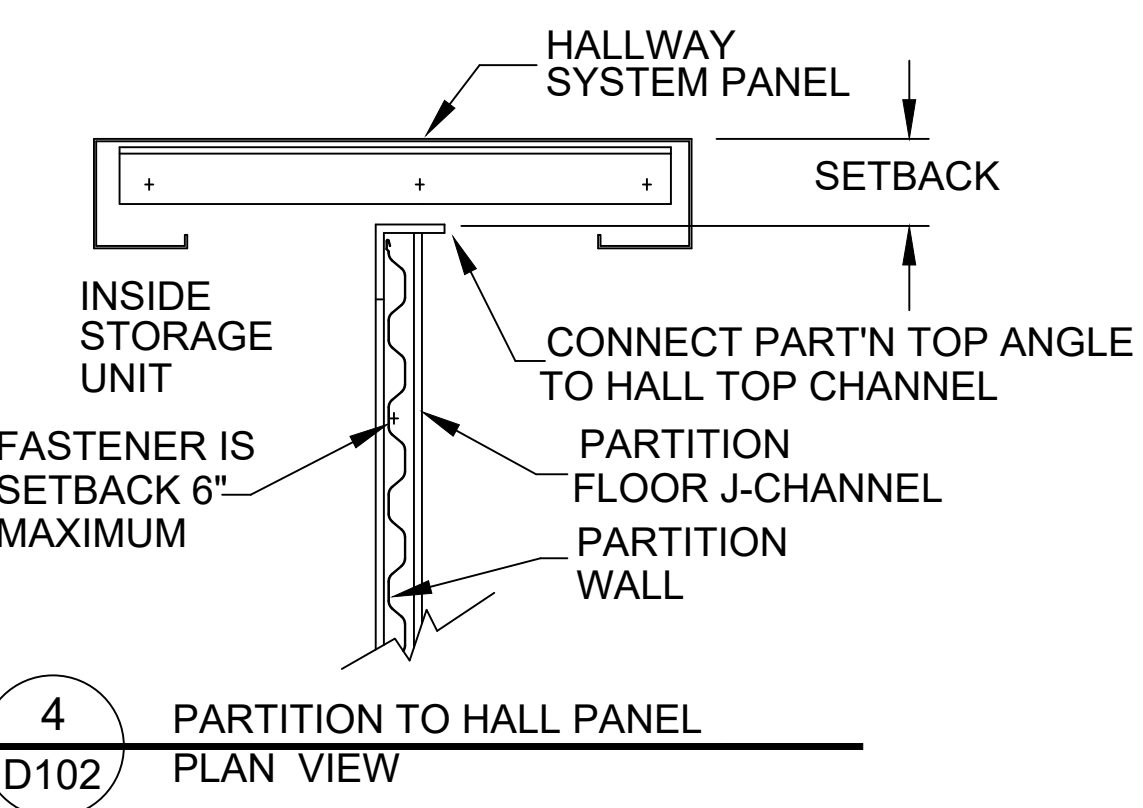
- 1.) Factory Galvalume finish standard.
- 2.) Non Load bearing Unit dividing system shown.

8'-4" FINISHED HALLWAY HEIGHT

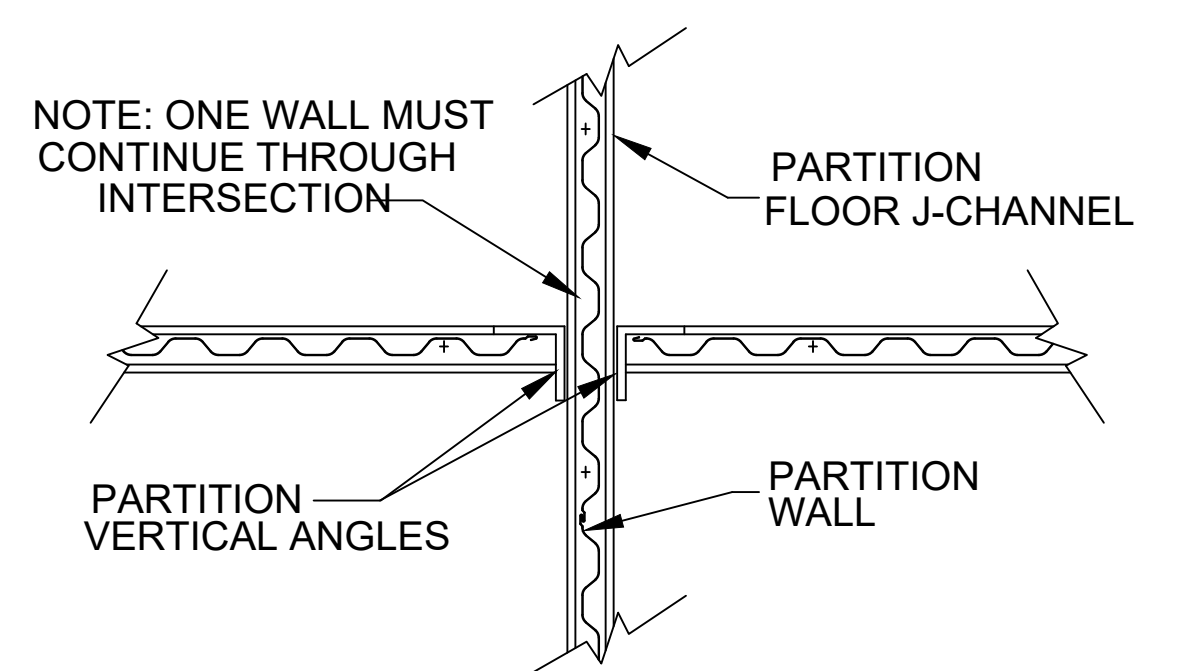
UNLESS NOTED OTHERWISE ON PLAN

NOTES:

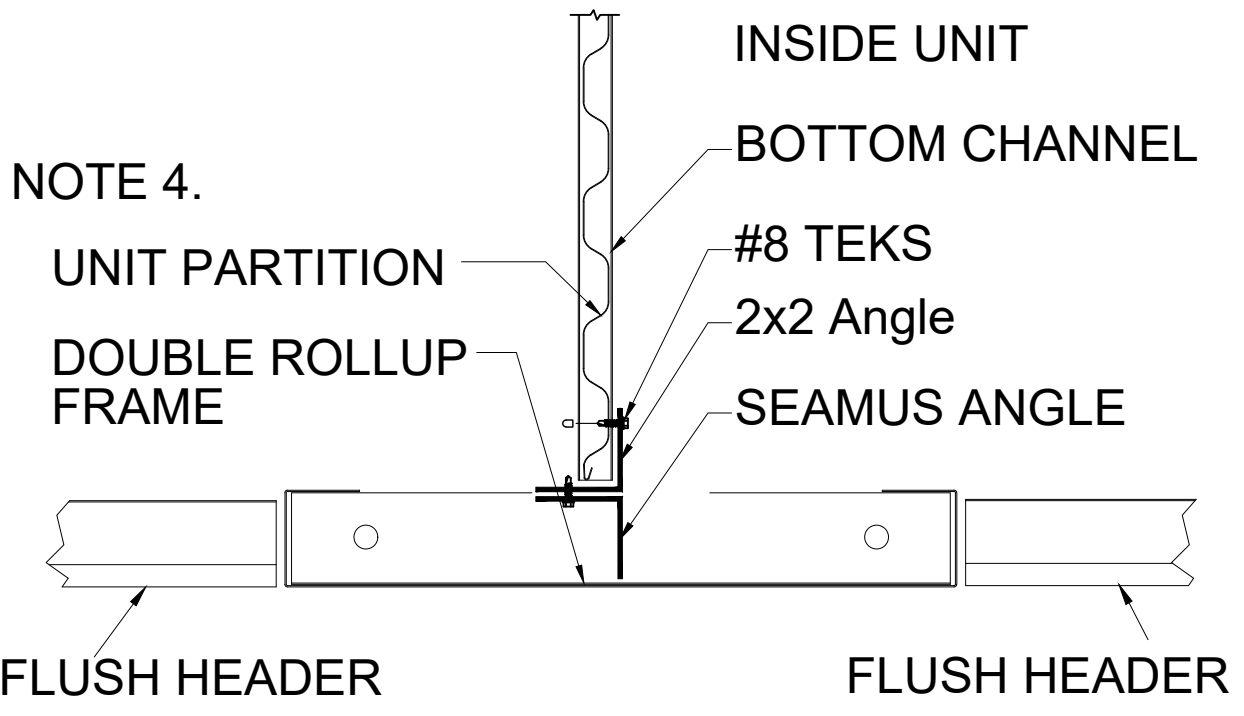
- 1) FASTEN THE BOTTOM CHANNEL TO THE FLOOR 30" OC USING AIR, BUTANE OR POWDER ACTUATED FASTENERS.
- 2) CONNECT THE TOP ANGLE TO THE HALLWAY SYSTEM AND 2X2 MESH BRACING ANGLES WITH TEK SCREW FASTENERS.
- 3) INSERT THE CORRUGATED WALL PANELS INTO THE TOP ANGLE AND BOTTOM CHANNEL. SLIDE INTERLOCKING "FINGERS" OF THE CORRUGATED UNTIL SECURE AND FASTEN THE TOP OF THE CORRUGATED WALL SECTIONS TO THE TOP ANGLE'S OUTER LIP USING TEKS SCREWS (AS SHOWN IN THE REAR VIEW).
- 4) SECURE THE BOTTOM OF THE CORRUGATED WALL SECTIONS TO THE BOTTOM CHANNEL'S FRONT FACE USING TEKS SCREWS (AS SHOWN IN REAR VIEW).
- 5) SECURE THE MIDSPAN BRACING CHANNEL ACROSS THE BACK OF THE CORRUGATED WALL SECTIONS USING TEKS SCREWS (AS SHOWN IN REAR VIEW).
- 6) SECURITY MESH 2x2x16gauge Galvanized WWF SUPPORTED WITH 2x2x120 ANGLES 60" OC. TOP OF MESH TO BE 18" MINIMUM BELOW SPRINKLER HEAD DIFFUSERS.



4 D102 PARTITION TO HALL PANEL PLAN VIEW



5 D102 PARTITION INTERSECTION PLAN VIEW



6 D102 SEAMUS ANGLE ATTACHMENT PLAN VIEW



DOORS & BUILDING COMPONENTS
4645 Timber Ridge Road
Douglasville, GA 30135
Toll Free 800-542-0501
Phone 770-942-0501
Fax 770-947-5335
sales@dbci.com
www.dbci.com

NOTE TO CLIENT, CUSTOMER OR OWNER: THIS UNIT MIX LAYOUT MAY NOT MEET SOME LOCAL OR NATIONAL BUILDING CODES. IT IS THE CUSTOMER'S RESPONSIBILITY TO HAVE THE LAYOUT CHECKED BY A LICENSED ARCHITECT/ENGINEER TO VERIFY THAT IT MEETS ALL LOCAL CODES INCLUDING EGRESS. UNIT TYPES ARE FINISHING AND ACTUAL DIMENSIONS MAY VARY DEPENDING ON BUILDING DIMENSIONS AND DESCRIPTIONS.

Drawn For: **ERIE PLACE ASSOCIATES II, LLC**
CONVERSION @ 615 ERE PLACE
615 ERE PLACE, SYRACUSE, NY

DBCI Print Number
76728

Store Number
-

Rev #	Date
01	11.01.23
02	11.07.23
03	11.07.23
04	11.07.23
05	01.23.24
06	01.23.24
07	01.23.24
08	01.25.24
09	03.01.24
10	03.01.24

Drawn On 10.27.23
Drawn By Nicole D.
Checked By Steve G.

D102

PARTITION DETAIL



8018 Breen Drive, Houston, TX 77064

800-542-0501

DBCI.com

PROJECT COLOR & LATCH CONFIRMATION

INTERNAL

Date:	_____
Submitted By:	_____
DBCI Order #:	_____
System Height @	_____

Customer Name: _____ Project Name: _____

Project Address: _____

Phone: _____ Email: _____ Signature: _____

Please complete the listing below to ensure timely and accurate production of your order.

COLOR SELECTION:

Reference the color chart below and select the corresponding drop-down listing for each item.

STANDARD COLORS



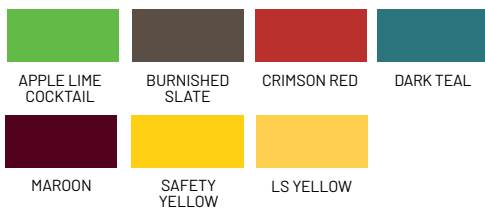
SPECIALTY COLORS (TIER 1)



SPECIALTY COLORS (TIER 2)



SPECIALTY COLORS (TIER 3)



SPECIALTY COLORS (TIER 4)



PRICING TIERS

An up-charge will be applied to all specialty door colors on all door models.

DBCI Hallway System:

Exterior Door Color:

Interior Door Color:

Display/Faux Door Color:

Upper Locker Door Color:

Drive-Thru Door Color:

LATCH SELECTION:

Select one latch from the following.

Note: Nokē One can also be selected in addition to a standard lock.

Punch for Cylinder?

YES

NO



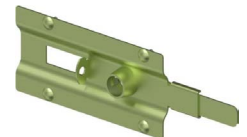
DBCI Standard Mini



DBCI Standard BEZEL



Stainless Steel BEZEL C487-SS



Chateau BEZEL C487-YZ



TURTLE (280009-0000)



Over Lock Latch



Nokē One

Additional cost and infrastructure apply—inquire for more information

PLEASE NOTE: All color images are provided to assist in branding and marketing processes, and are not a guarantee of exact color match. Please request a metal color sample when making your selection.