

24 ENGELHARD DRIVE

Monroe, New Jersey



97,691 SF IMMEDIATELY AVAILABLE FOR SUBLEASE 20 DOCK DOORS & 30 TRAILER SPACES

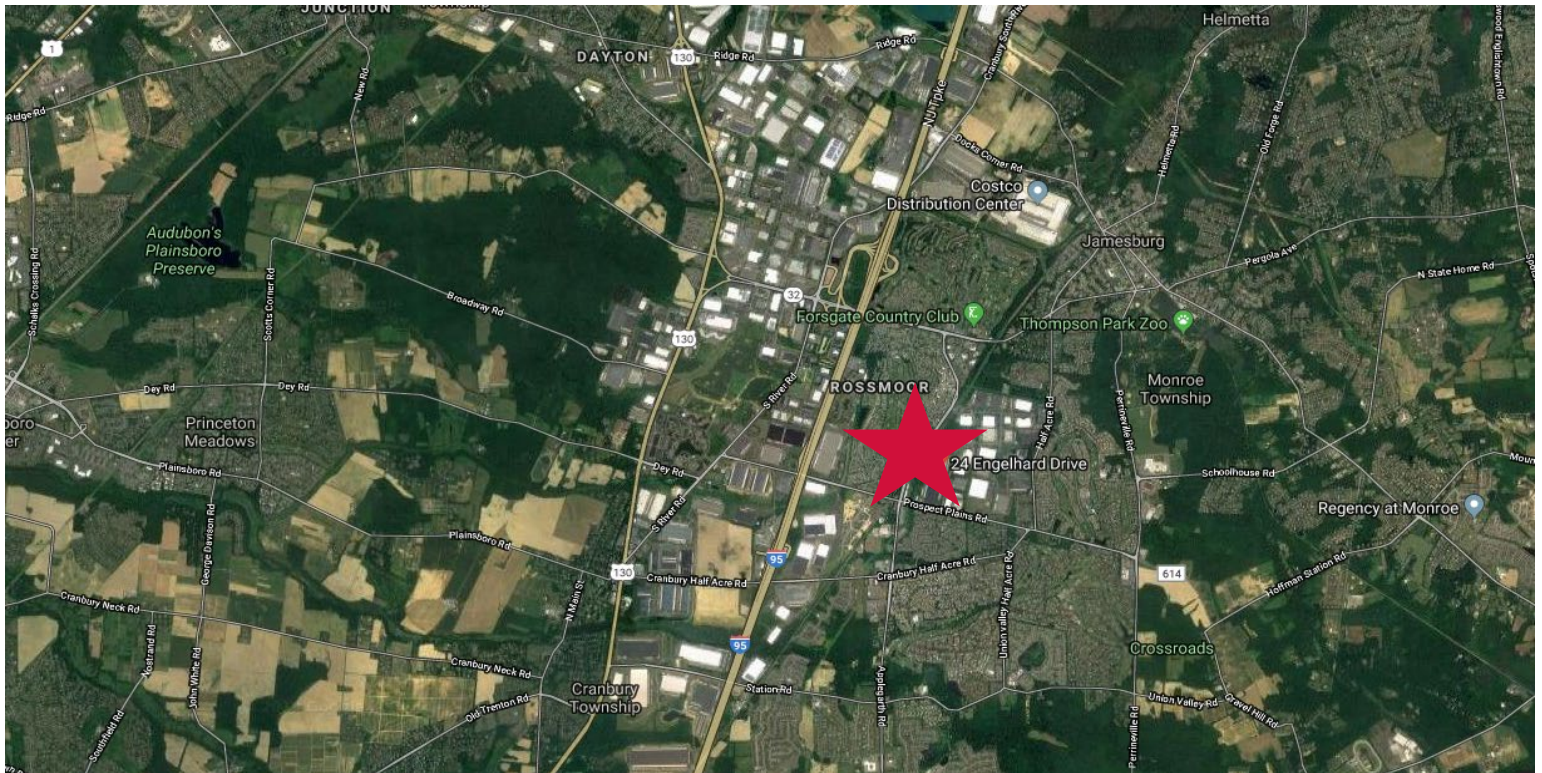
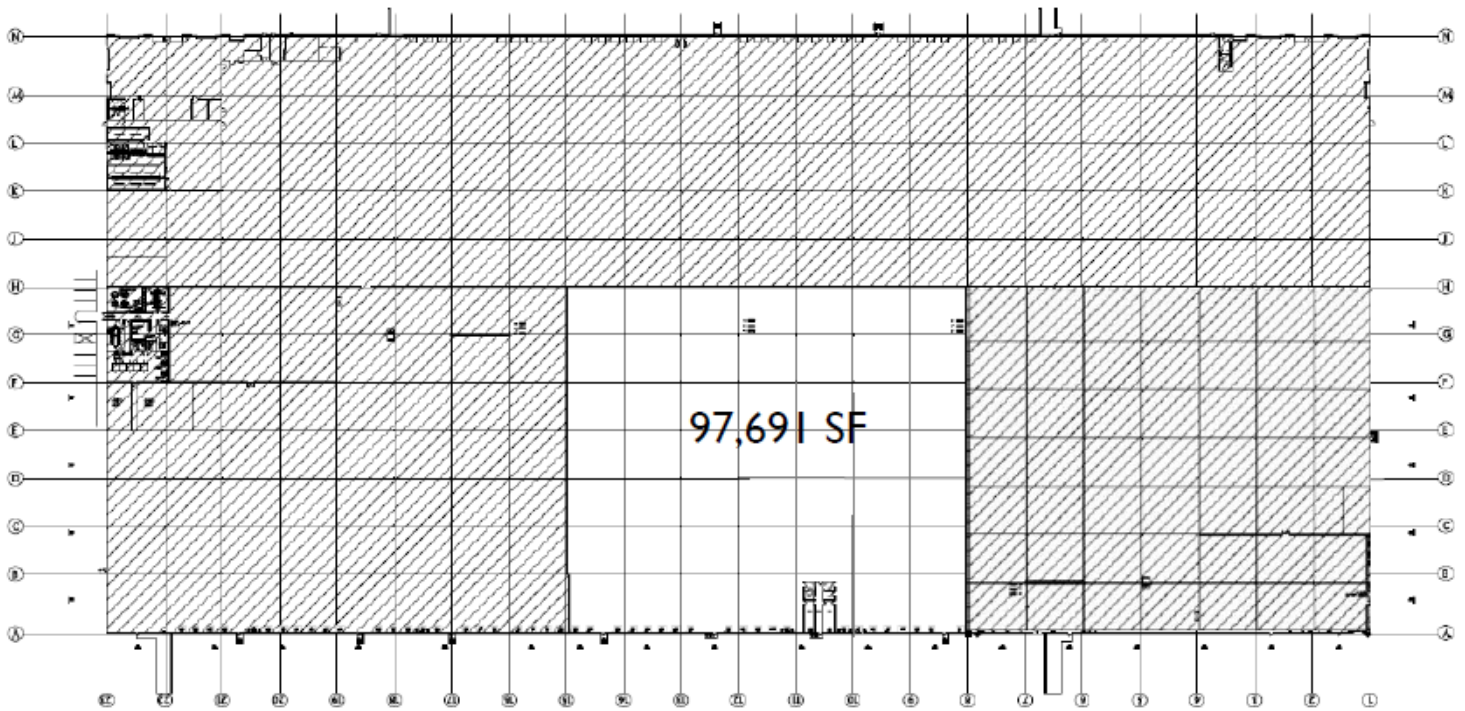
Sublease Info:	Available 1/1/20, through 6/30/21	Truck Court:	120' (50' pad)
Drive In Door:	1 drive in door	Column Spacing:	48'x40', 48'x49' staging bay
Available Unit:	97,691 SF	Lighting:	T-5's on sensors
Office Area:	± 1,500 SF	Sprinkler:	ESFR
Parking:	30 trailer spaces	Year Built:	2002
Ceiling Height:	32' clear		
Loading:	20 – 9'x10' dock doors, 30,000 lbs		

EXCLUSIVE BROKER

Kyle Eaton, SIOR • Managing Director • 732.867.9556 • keaton@ngkf.com

24 ENGELHARD DRIVE

Monroe, New Jersey



EXCLUSIVE BROKER

Kyle Eaton, SIOR • Managing Director • 732.867.9556 • keaton@ngkf.com