

FOR SUBLEASE

±94,885 SF FREESTANDING BUILDING WITH LARGE YARD

2021 E JONES AVE, PHOENIX, AZ



2,400 AMPS 277/480V TOTAL | ±1.15 ACRE YARD

SUBLEASE UNTIL MARCH 2027

MARC PIERCE
mpierce@leearizona.com
D 602.697.2922

BRIAN PAYNE
bpayne@leearizona.com
D 602.820.6217

NICK VAGNOZZI
nvagnozzi@leearizona.com
D 602.292.3292

5090 North 40th Street, Suite 300 | Phoenix, Arizona 85018 | 602-956-7777 | www.leearizona.com

FOR SUBLEASE

±94,885 SF FREESTANDING BUILDING WITH LARGE YARD

2021 E JONES AVE, PHOENIX, AZ

FEATURES

WEST BUILDING

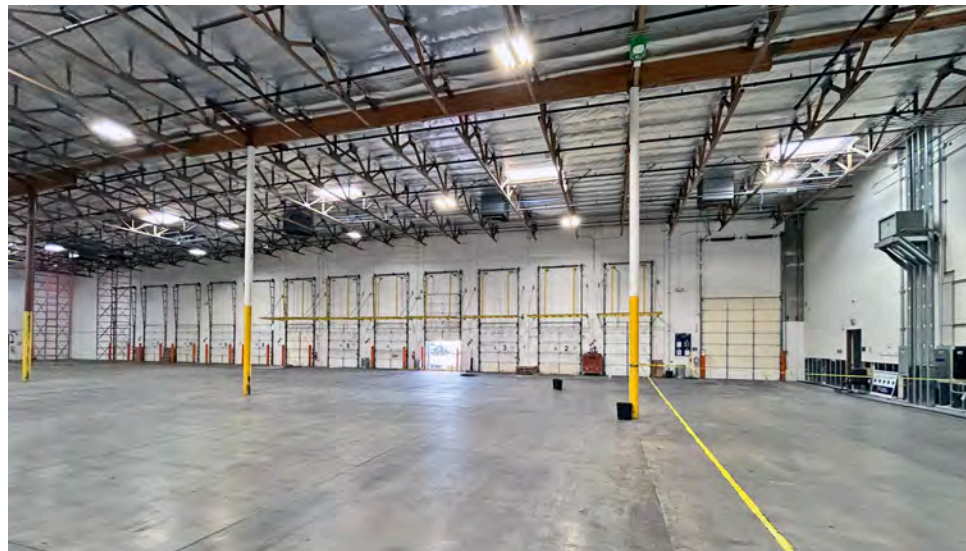
- ±35,000 SF
- ±6,200 SF Office (Recent Improvements)
- ±27' Clear
- 11 Dock High Doors
- 1 Dock High Platform (Side Loading)
- 1 GL (12'x14')
- EVAP Warehouse
- 1,200 AMPS | 277/480v | 3P
- 39'x39' Column Spacing
- Zoning: A-1 (City of Phoenix)

EAST BUILDING

- ±59,885 SF
- ±1,500 SF Office
- ±8,700 SF Climate Controlled Room
- ±30' Clear Height
- 8 Dock High Doors with Edge of Dock Levelers
- EVAP Warehouse
- 1,200 AMPS | 277/480v | 3P
- 44'x34' Column Spacing
- Zoning: A-1 (City of Phoenix)

YARD

- ±1.15 AC
- Concrete Paved
- Two Points ingress/egress
- Truck Scale
- Ind. Pk. (City of Phoenix)



FOR SUBLEASE

±94,885 SF FREESTANDING BUILDING WITH LARGE YARD

2021 E JONES AVE, PHOENIX, AZ



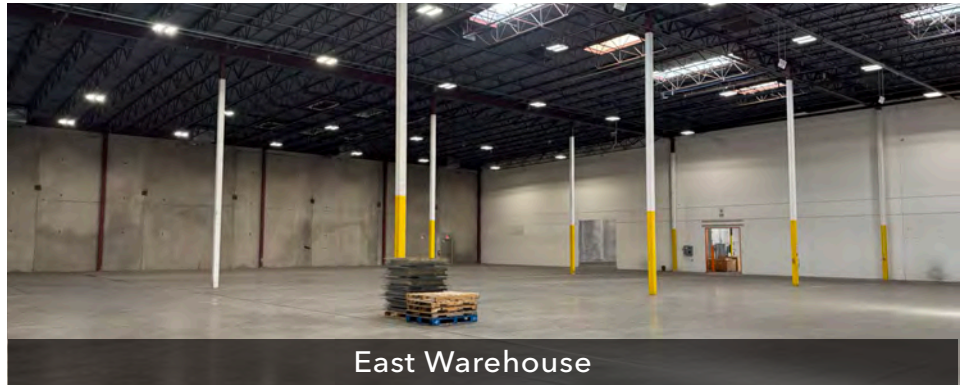
Truck Court (West)



East Building



West Warehouse



East Warehouse



Concrete Yard

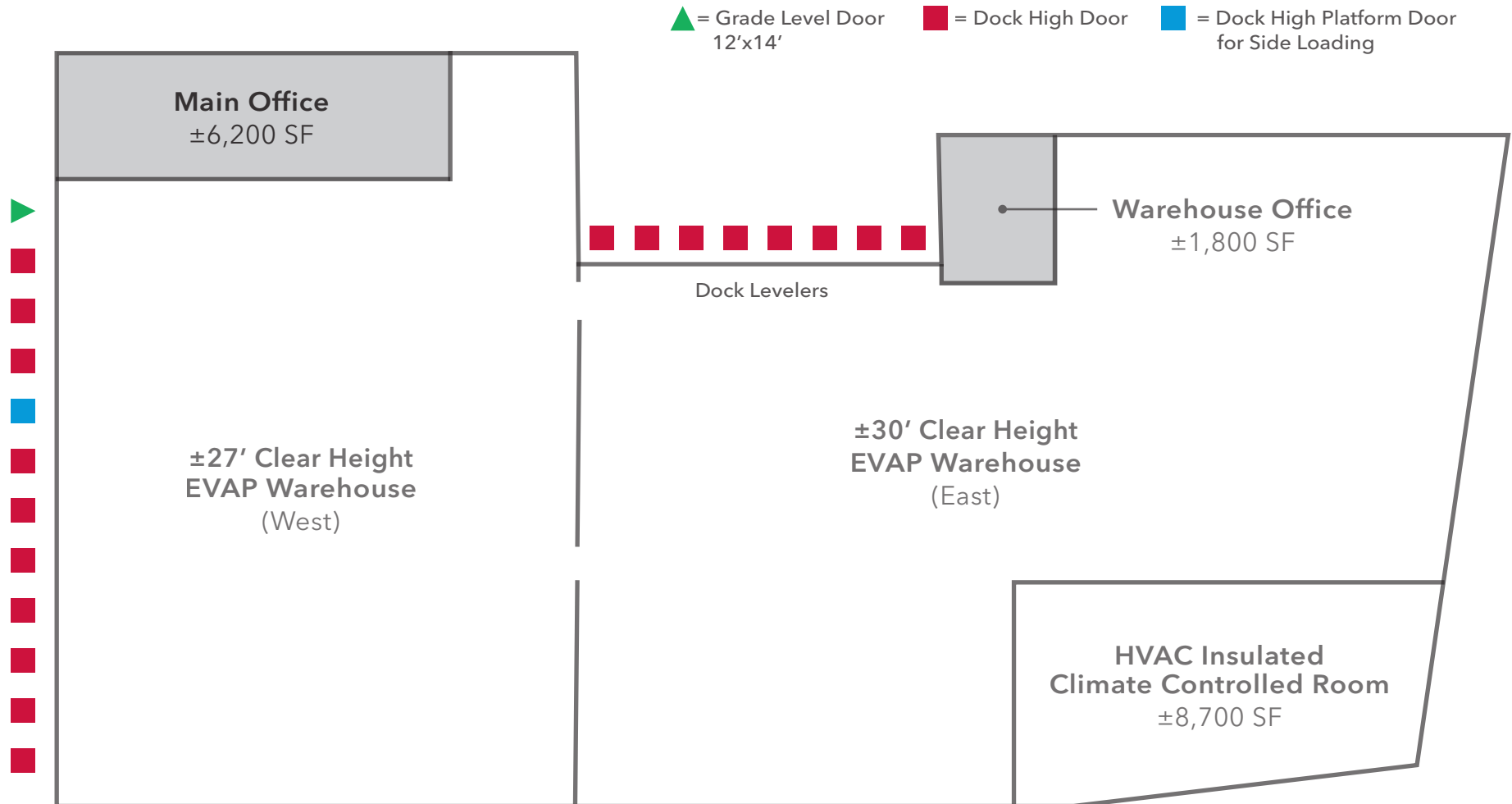


Temperature Controlled Room

FOR SUBLEASE

±94,885 SF FREESTANDING BUILDING WITH LARGE YARD

2021 E JONES AVE, PHOENIX, AZ



FOR SUBLEASE

±94,885 SF FREESTANDING BUILDING WITH LARGE YARD

2021 E JONES AVE, PHOENIX, AZ

LEE & ASSOCIATES
COMMERCIAL REAL ESTATE SERVICES



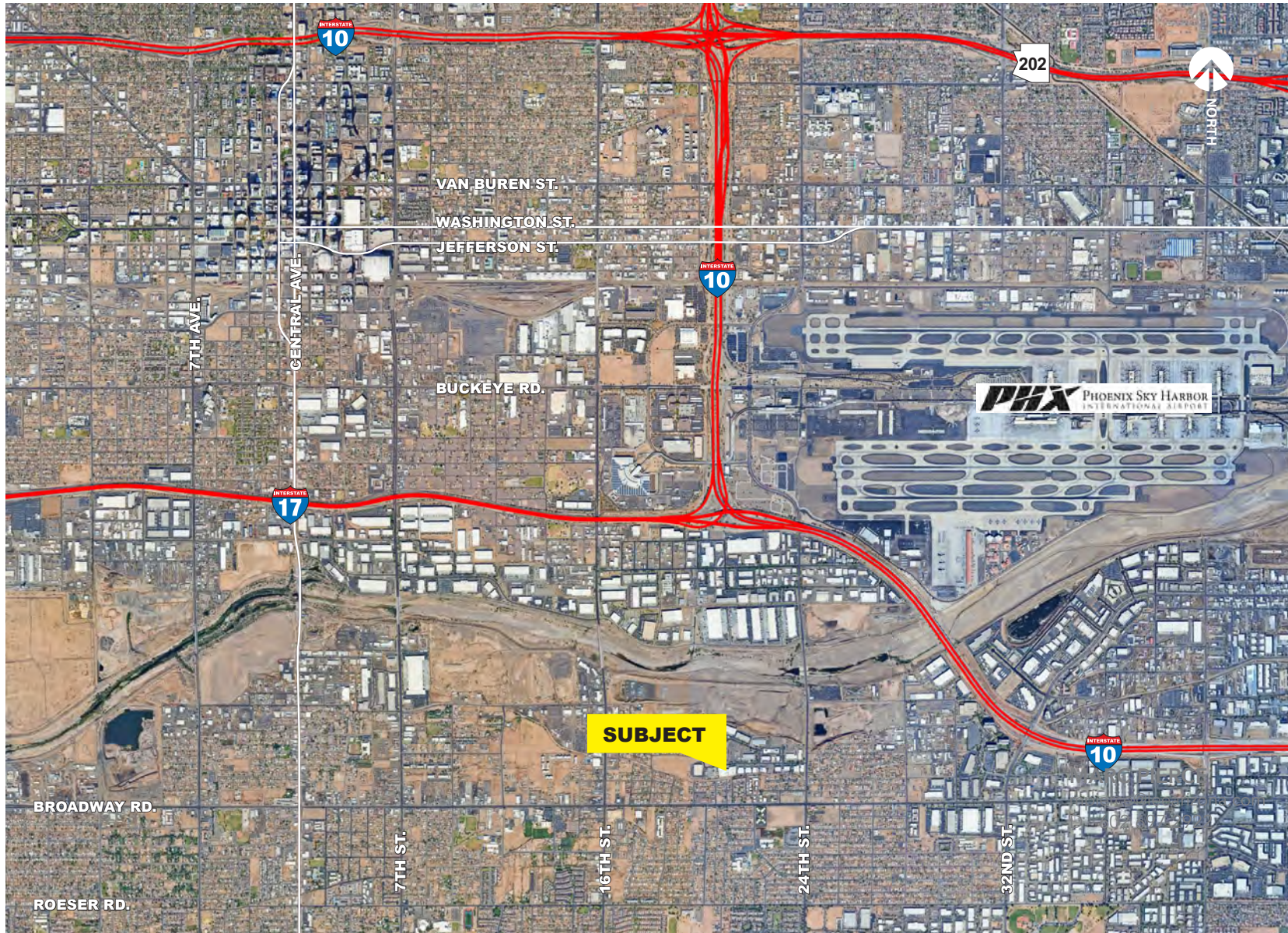
5090 North 40th Street, Suite 300 | Phoenix, Arizona 85018 | 602-956-7777 | www.leeearizona.com

FOR SUBLEASE

±94,885 SF FREESTANDING BUILDING WITH LARGE YARD

2021 E JONES AVE, PHOENIX, AZ

LEE & ASSOCIATES
COMMERCIAL REAL ESTATE SERVICES



MARC PIERCE
mpierce@leearizona.com
D 602.697.2922

BRIAN PAYNE
bpayne@leearizona.com
D 602.820.6217

NICK VAGNOZZI
nvagnozzi@leearizona.com
D 602.292.3292