

LEASE

General Offices, Medical Practice,
Therapy/Wellness Provides, Med Spa

**4783 Hwy 153
Powdersville
Easley, South Carolina 29673**



- +/-3,600 sf
- 18 offices, w/reception, conference, break rooms
- Great Exposure
- High Traffic
- Direct access to Hwy 153
- Pickens County

For additional information please contact:

Bradford Johnson, CCIM
RE/MAX Results - Commercial
400 E McBee Avenue, Suite 112
Greenville, SC 29601
864.230.1884 Cellular
brad@bradjohnson-ccim.net

Becky Call
RE/MAX Results - Commercial
400 E McBee Avenue, Ste 112
Greenville, SC 29601
Cell 585-409-1869
becky@bradjohnson-ccim.net



All information deemed to be reliable, but not guaranteed. It is your responsibility to confirm all information.

A Better Way in
Commercial Real Estate

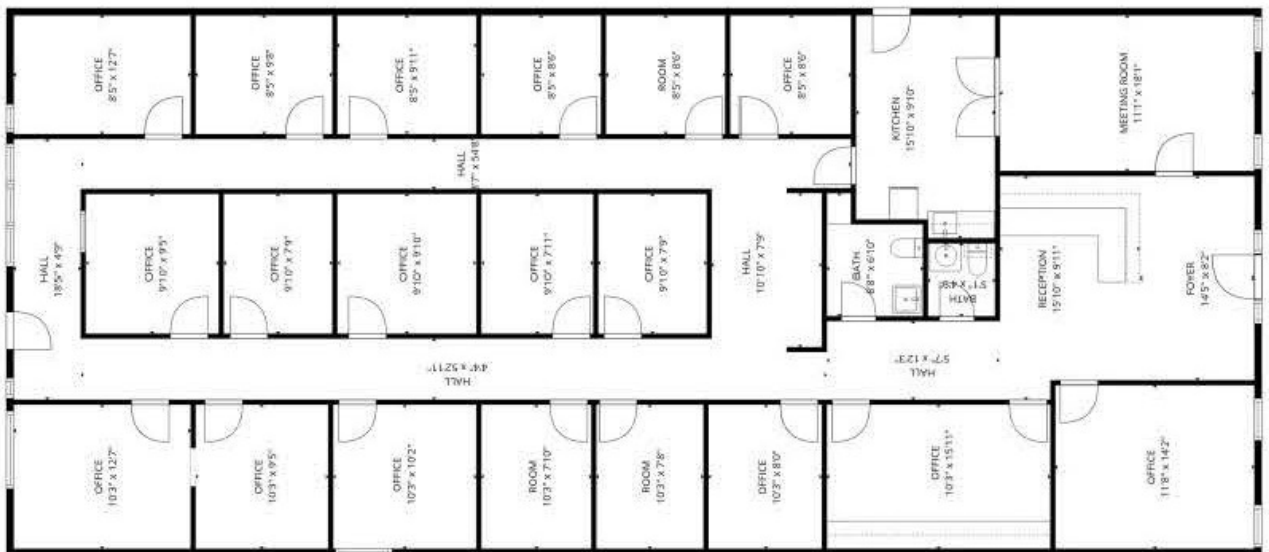
LEASE

Office/Medical/Therapeutic

**4783 Hwy 153
Powdersville
Easley, South Carolina 29673**

Floor Plan

Front



For additional information please contact:

Bradford Johnson, CCIM
RE/MAX Results - Commercial
400 E McBee Avenue, Suite 112
Greenville, SC 29601
864.230.1884 Cellular
brad@bradjohnson-ccim.net

Becky Call
RE/MAX Results - Commercial
400 E McBee Avenue, Ste 112
Greenville, SC 29601
Cell 585-409-1869
becky@bradjohnson-ccim.net



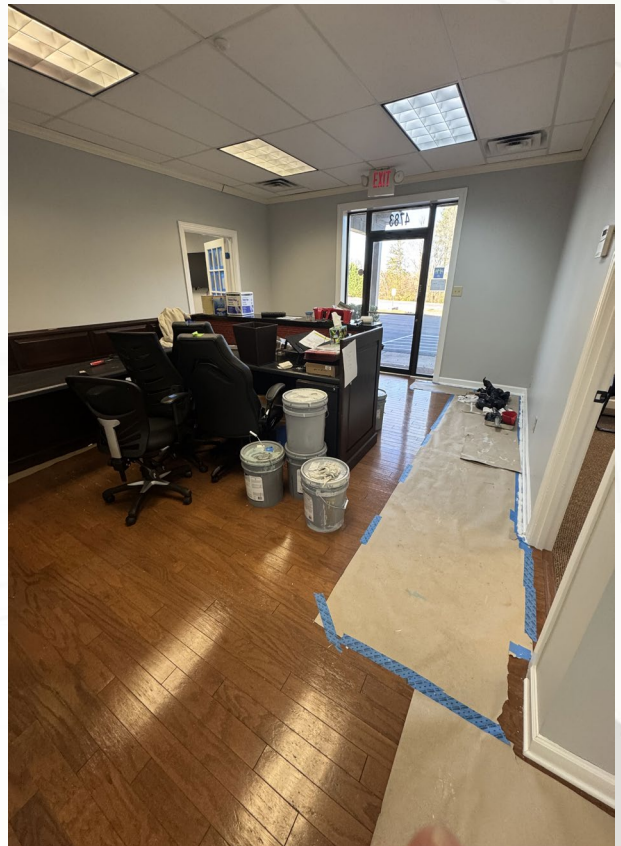
All information deemed to be reliable, but not guaranteed. It is your responsibility to confirm all information.

A Better Way in
Commercial Real Estate

LEASE

Office/Medical/Therapeutic

**4783 Hwy 153
Powdersville
Easley, South Carolina 29673**



For additional information please contact:

Bradford Johnson, CCIM
RE/MAX Results - Commercial
400 E McBee Avenue, Suite 112
Greenville, SC 29601
864.230.1884 Cellular
brad@bradjohnson-ccim.net

Becky Call
RE/MAX Results - Commercial
400 E McBee Avenue, Ste 112
Greenville, SC 29601
Cell 585-409-1869
becky@bradjohnson-ccim.net



All information deemed to be reliable, but not guaranteed. It is your responsibility to confirm all information.

**A Better Way in
Commercial Real Estate**

LEASE

Office/Medical/Therapeutic

**4783 Hwy 153
Powdersville
Easley, South Carolina 29673**



For additional information please contact:

Bradford Johnson, CCIM
RE/MAX Results - Commercial
400 E McBee Avenue, Suite 112
Greenville, SC 29601
864.230.1884 Cellular
brad@bradjohnson-ccim.net

Becky Call
RE/MAX Results - Commercial
400 E McBee Avenue, Ste 112
Greenville, SC 29601
Cell 585-409-1869
becky@bradjohnson-ccim.net



All information deemed to be reliable, but not guaranteed. It is your responsibility to confirm all information.

**A Better Way in
Commercial Real Estate**

LEASE

Office/Medical/Therapeutic

**4783 Hwy 153
Powdersville
Easley, South Carolina 29673**



For additional information please contact:

Bradford Johnson, CCIM
RE/MAX Results - Commercial
400 E McBee Avenue, Suite 112
Greenville, SC 29601
864.230.1884 Cellular
brad@bradjohnson-ccim.net

Becky Call
RE/MAX Results - Commercial
400 E McBee Avenue, Ste 112
Greenville, SC 29601
Cell 585-409-1869
becky@bradjohnson-ccim.net



All information deemed to be reliable, but not guaranteed. It is your responsibility to confirm all information.

**A Better Way in
Commercial Real Estate**