



FOR LEASE



MACADAM PLACE

Available Office Spaces: 1,735 - 1,797 SF

6915 SW Macadam Avenue, Portland, OR

Macadam Place is located in the vibrant John's Landing Community of South Portland, walking distance to retail, restaurants, and parks nearby. This property offers Willamette River views and provides tenants with excellent proximity to Downtown Portland and the southwest suburbs.

Brand new bike storage facility, tenant coffee lounge, and showers ready for Tenant use!

MCCOY DOERRIE, SIOR
Senior Vice President | Licensed in OR & WA
503-523-7751

mccoy@capacitycommercial.com

JEFF FALCONER, SIOR
Principal | Licensed in OR
503-542-4346

jeff@capacitycommercial.com

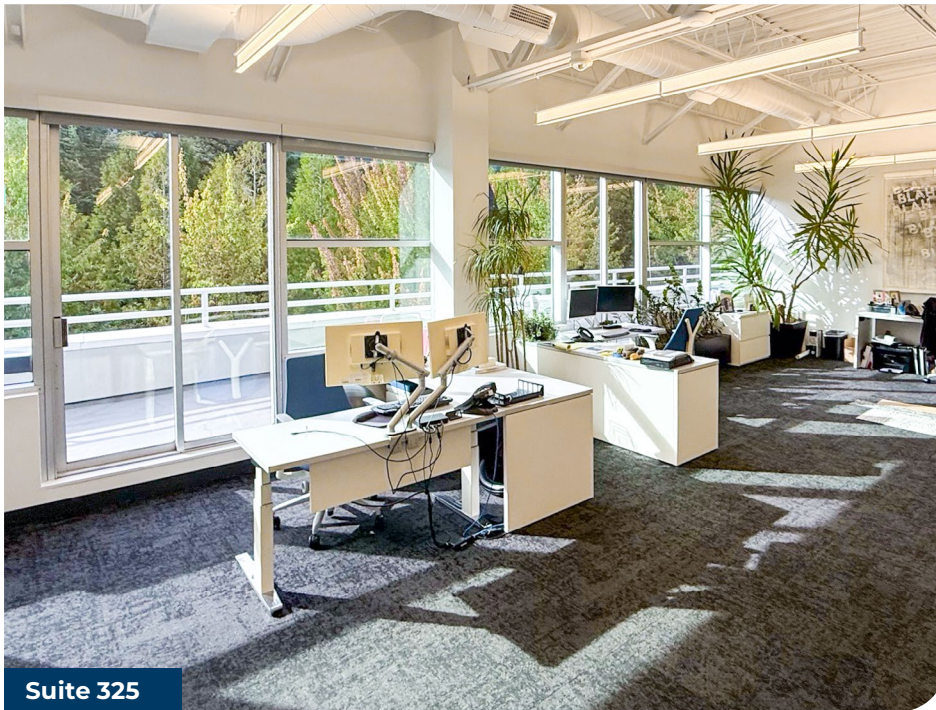


BUILDING SPECS

FOR LEASE



Building Lobby



Suite 325

PROPERTY DETAILS & AMENITIES	
Address	6915 SW Macadam Avenue, Portland, OR
Total Available SF	3,532 SF
Renovated	Lobby & Common Area Upgrades Recently Completed
Free Parking	<ul style="list-style-type: none"> • 2.80/1,000 SF • 50 Surface Spaces • 20 Covered Spaces



SHOWER



FREE PARKING



ESPRESSO MACHINE



FITNESS ROOM



BIKE ROOM

AVAILABILITIES		
Suite 255	1,797 RSF	\$32.50 RSF - Full Service
Suite 325	1,735 RSF	\$33.00 RSF - Full Service

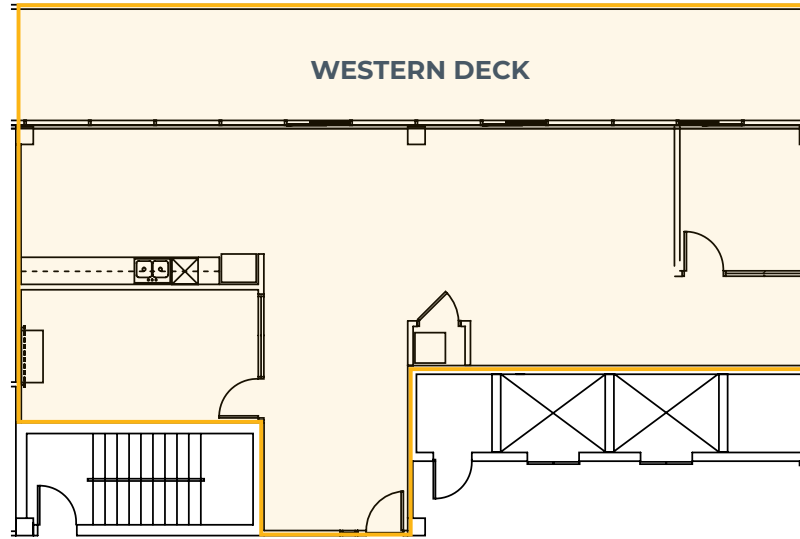


Suite 325 - Kitchen

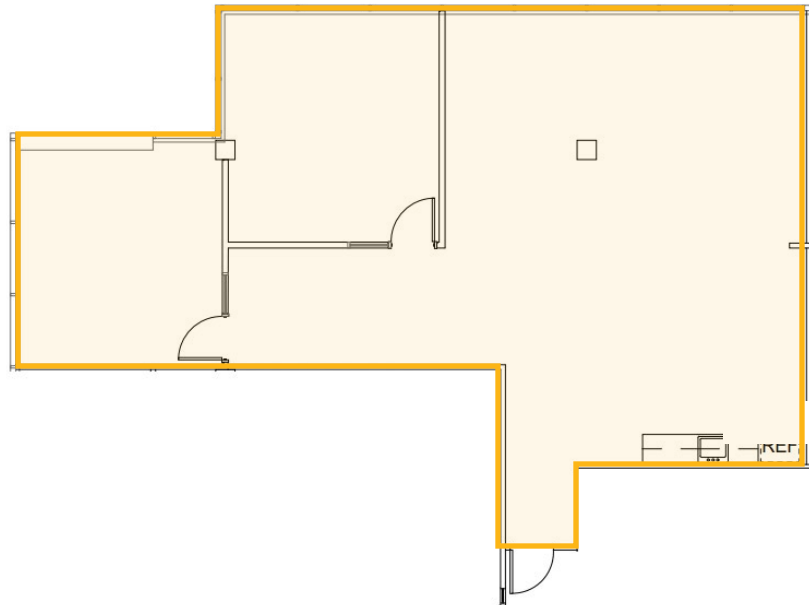


AVAILABLE SUITES

SUITE 325 | 1,735 SF

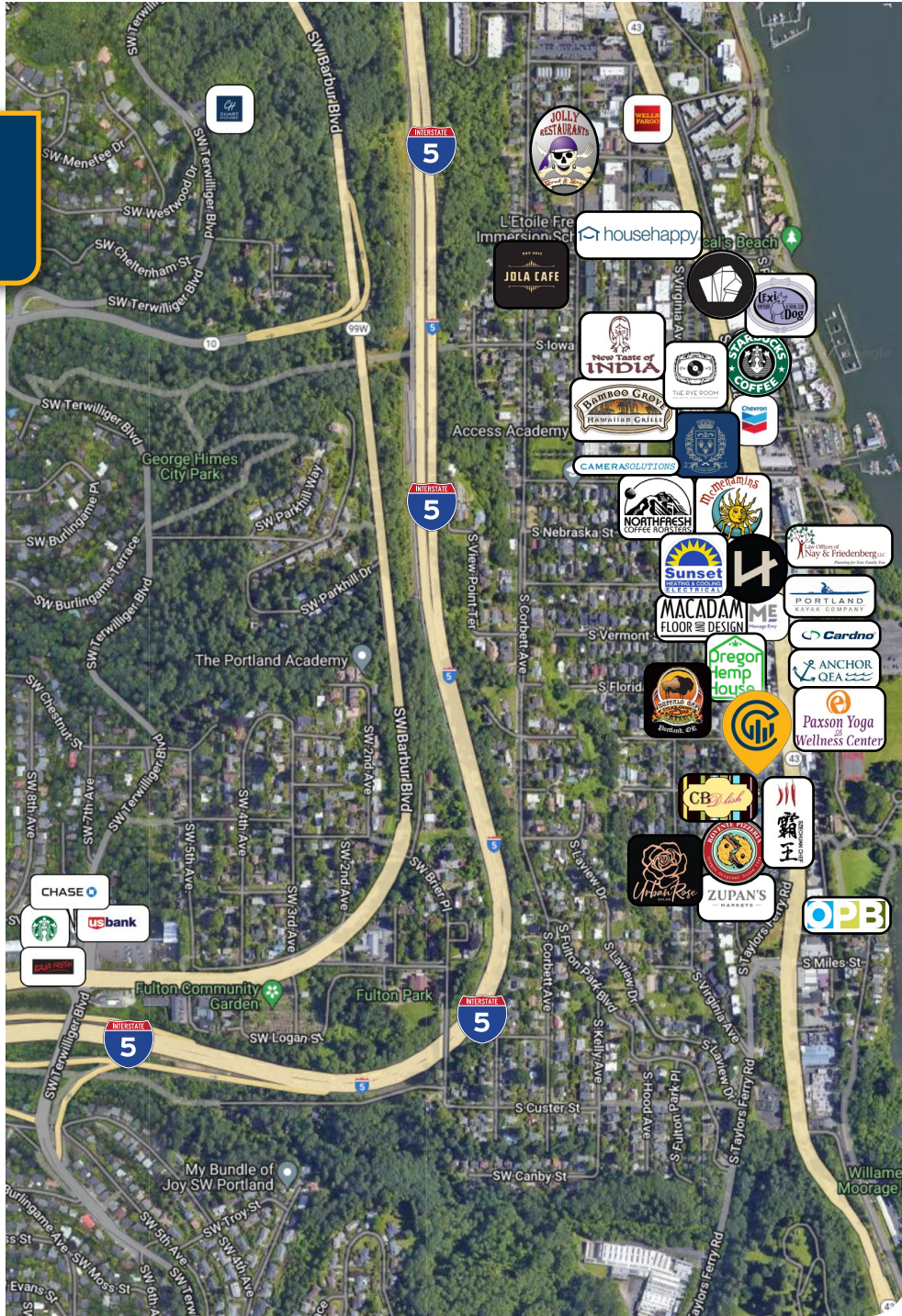


SUITE 255 | 1,797 SF





AREA HIGHLIGHTS



72

Walk Score®
"Walkable"

90

Bike Score®
"Biker's Paradise"

40

Transit Score®
"Good Transit"

Ratings provided by
www.walkscore.com/

MCCOY DOERRIE, SIOR
Senior Vice President | Licensed in OR & WA
503-523-7751 | mccoym@capacitycommercial.com

JEFF FALCONER, SIOR
Principal | Licensed in OR
503-542-4346 | jeff@capacitycommercial.com

MACADAM PLACE