

# 4660 BEECHNUT

OFFICE SPACE



4660 BEECHNUT ST.  
HOUSTON, TX 77096



**DAN MEYER**  
713.668.2369  
danmeyer@mcmmanagement.com

**ANNIE TARWATER**  
713.668.2369  
atarwater@mcmmanagement.com

# 4660 BEECHNUT

## LOCATION HIGHLIGHTS



## LOCATION HIGHLIGHTS

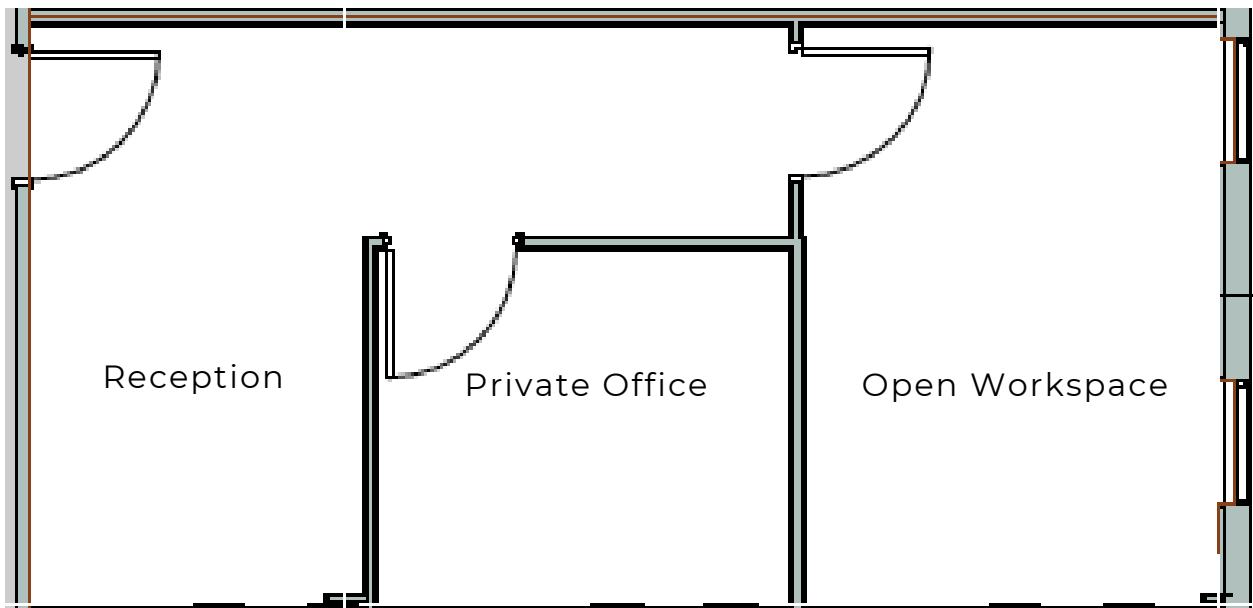
- LOCATED JUST INSIDE THE 610 LOOP IN CLOSE PROXIMITY TO MEYERLAND & BELLAIRE.
- THIS MIXED-USE PROPERTY OFFERS 20,000 SF OF PRIME RETAIL SPACE ON THE GROUND FLOOR AND 20,000 SF OF NEWLY REMODELED OFFICE SPACE ON THE SECOND FLOOR.
- POSITIONED ACROSS FROM SOUTH CROSS SHOPPING CENTER AND NEAR MEYERLAND PLAZA, THE BUILDING PROVIDES A CONVENIENT AND HIGHLY ACCESSIBLE LOCATION WITH AMPLE NEARBY DINING OPTIONS AND AMENITIES.

# 4660 BEECHNUT



**SUITE 214**  
450 SF

## Suite Layout



**ANNIE TARWATER**

713.668.2369

atarwater@mcmmanagement.com

**DAN MEYER**

713.668.2369

danmeyer@mcmmanagement.com

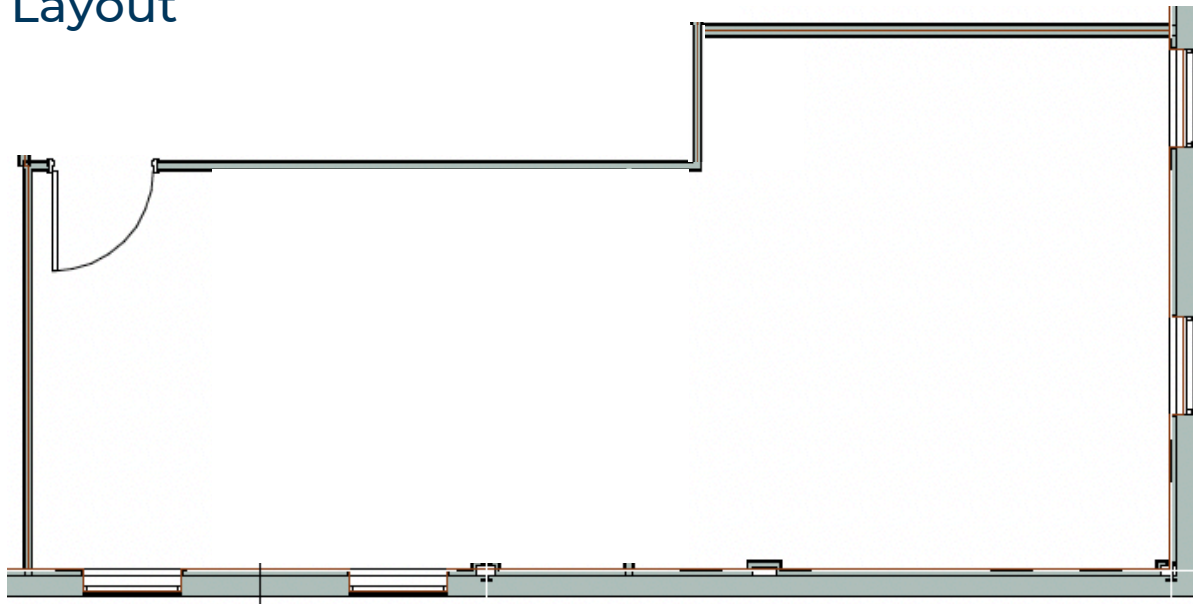
4660 BEECHNUT ST.,  
HOUSTON, TX 77096

# 4660 BEECHNUT



**SUITE 238**  
885 SF

Suite Layout



**ANNIE TARWATER**

713.668.2369

atarwater@mcmmanagement.com

**DAN MEYER**

713.668.2369

danmeyer@mcmmanagement.com

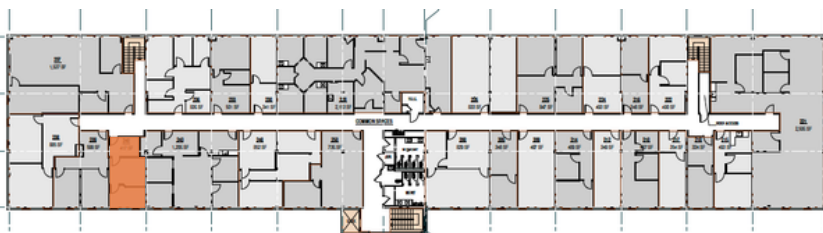
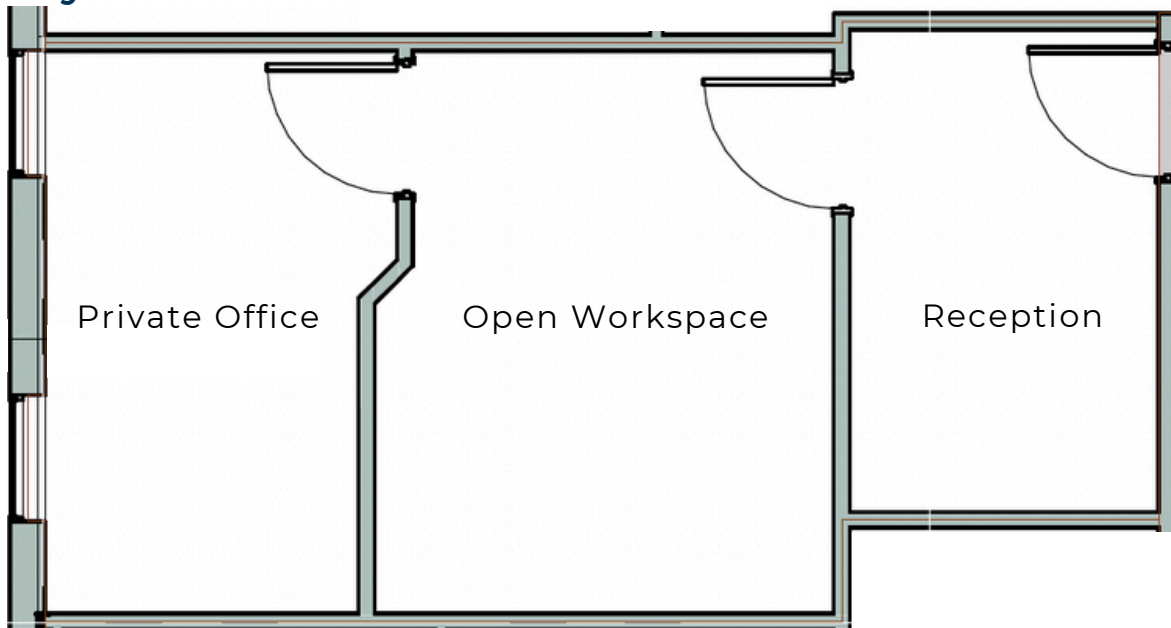
4660 BEECHNUT ST.,  
HOUSTON, TX 77096

# 4660 BEECHNUT



**SUITE 240**  
417 SF

## Suite Layout



**ANNIE TARWATER**

713.668.2369

atarwater@mcmmanagement.com

**DAN MEYER**

713.668.2369

danmeyer@mcmmanagement.com

4660 BEECHNUT ST.,  
HOUSTON, TX 77096