



## Medical & Professional Offices

# 13326-44 South Street

Cerritos, California 90703

## Lease Highlights

- 474 SF to 1,262 SF Medical or General Offices (1,736 SF Contiguous)
- Suitable for Medical or General Office Use
- Freshly Remodeled Shell Space with New Flooring & Paint
- Open Layout Ready to Accommodate a Variety of Business Needs & Configurations
- Shared Access to Two Remodeled Restrooms
- Ideal for Customization and Immediate Occupancy
- Flexible Floor Plan — Design & Build to Fit Your Exact Operational Needs
- Convenient, Accessible Location with Ample Parking
- Predominant Signage with High Visibility to 25,000 Vehicles Per Day on South Street
- Affluent Neighborhood - Over \$160K Average HH Income
- Minutes from the Cerritos Towne Center & Across Street from Cerritos Plaza (Ralphs Anchored)



For more information

**Steve Liu, Executive Vice President**

O: 949.468.2385 | C: 714.349.3547  
sliu@naicapital.com | CalDRE #01323150

**Nikki Liu, Senior Associate**

O: 949.468.2386 | C: 818.744.3398  
nliu@naicapital.com | CalDRE #02038755

No warranty, express or implied, is made as to the accuracy of the information contained herein. This information is submitted subject to errors, omissions, change of price, rental or other conditions, withdrawal without notice, and is subject to any special listing conditions imposed by our principals. Cooperating brokers, buyers, tenants and other parties who receive this document should not rely on it, but should use it as a starting point of analysis, and should independently confirm the accuracy of the information contained herein through a due diligence review of the books, records, files and documents that constitute reliable sources of the information described herein. Logos are for identification purposes only and may be trademarks of their respective companies. NAI Capital Commercial, Inc. CAL DRE Lic. #02130474

**NAI Capital**

1920 Main Street #100  
Irvine, CA 92614  
949.468.2300

[naicapital.com](http://naicapital.com)



For Lease

# 13326-44 South Street



SPACE	LEASE RATE:	LEASE TYPE	SIZE (SF)
13336	\$2.50 SF/MONTH	NNN, \$0.55	1,262 SF
13338	\$2.50 SF/MONTH	NNN, \$0.55	474 SF

## Steve Liu

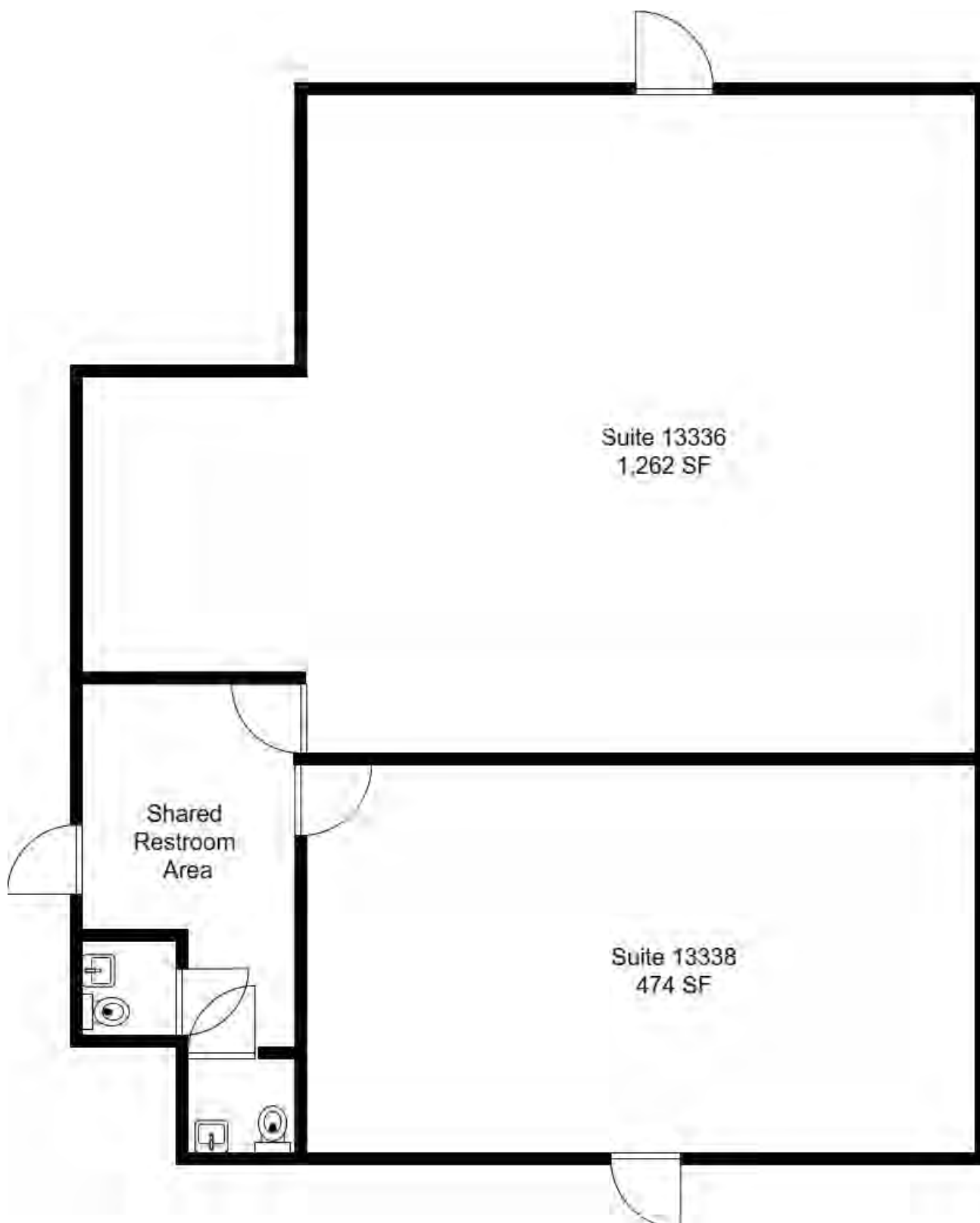
Executive Vice President  
949.468.2385  
C: 714.349.3547  
sliu@naicapital.com  
CalDRE #01323150

## Nikki Liu

Senior Associate  
949.468.2386  
C: 818.744.3398  
nliu@naicapital.com  
CalDRE #02038755

For Lease

13326-44 South Street



**Steve Liu**

Executive Vice President  
949.468.2385  
C: 714.349.3547  
sliu@naicapital.com  
CalDRE #01323150

**Nikki Liu**

Senior Associate  
949.468.2386  
C: 818.744.3398  
nliu@naicapital.com  
CalDRE #02038755



For Lease

# 13326-44 South Street



Suite 13336 (474 SF)



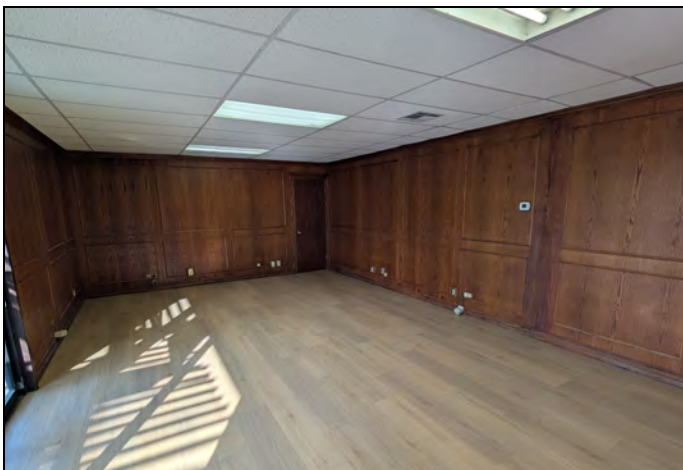
Suite 13336 (474 SF)



Suite 13336 (474 SF)



Suite 13336 (474 SF)



Suite 13336 (474 SF)



Shared Restroom

## Steve Liu

Executive Vice President  
949.468.2385  
C: 714.349.3547  
sliu@naicapital.com  
CalDRE #01323150

## Nikki Liu

Senior Associate  
949.468.2386  
C: 818.744.3398  
nliu@naicapital.com  
CalDRE #02038755

**NAICapital**  
COMMERCIAL REAL ESTATE SERVICES, WORLDWIDE

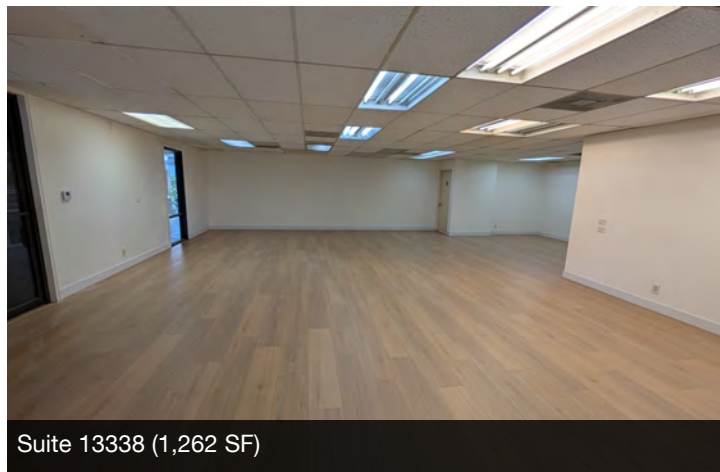


For Lease

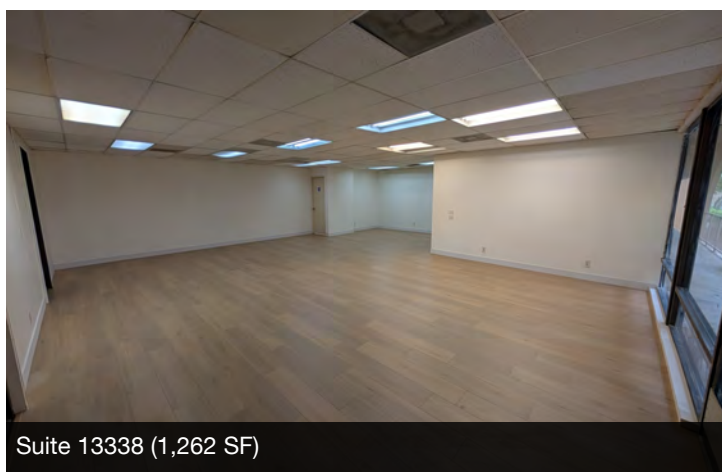
# 13326-44 South Street



Suite 13338 (1,262 SF)



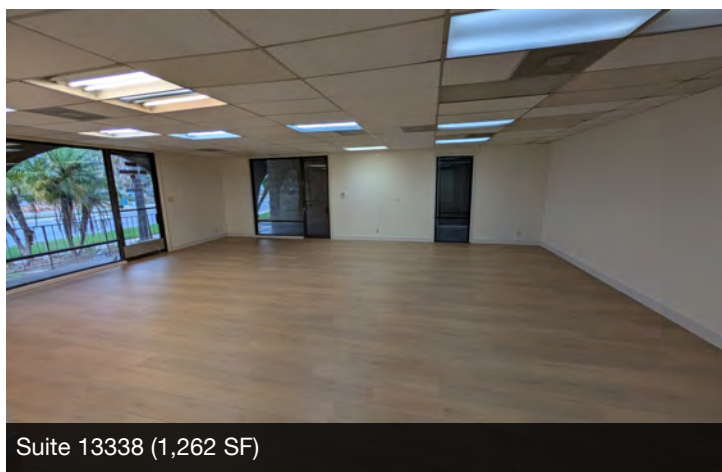
Suite 13338 (1,262 SF)



Suite 13338 (1,262 SF)



Suite 13338 (1,262 SF)



Suite 13338 (1,262 SF)



Suite 13338 (1,262 SF)

## Steve Liu

Executive Vice President  
949.468.2385  
C: 714.349.3547  
sliu@naicapital.com  
CalDRE #01323150

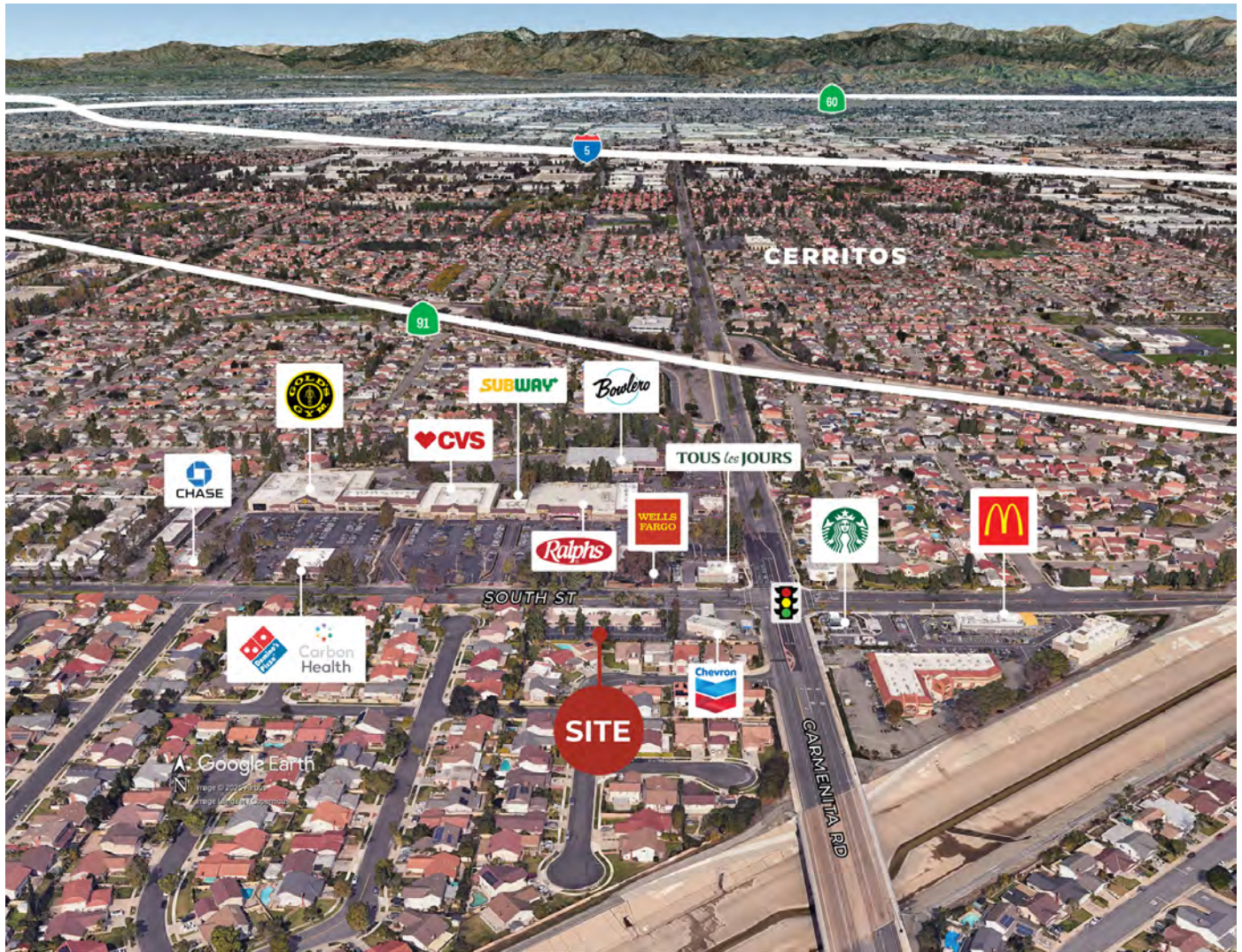
## Nikki Liu

Senior Associate  
949.468.2386  
C: 818.744.3398  
nliu@naicapital.com  
CalDRE #02038755



For Lease

# 13326-44 South Street



## Steve Liu

Executive Vice President  
949.468.2385  
C: 714.349.3547  
sliu@naicapital.com  
CalDRE #01323150

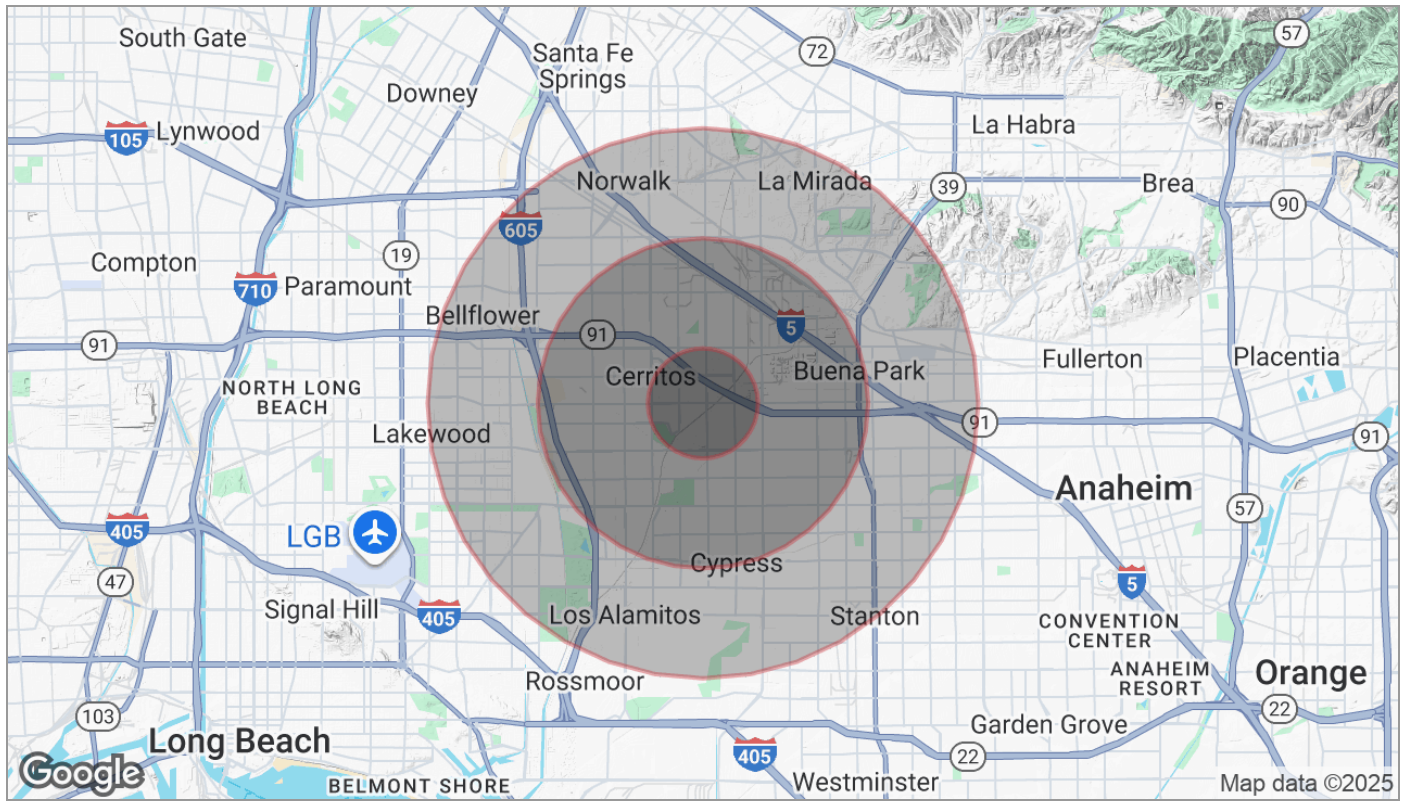
## Nikki Liu

Senior Associate  
949.468.2386  
C: 818.744.3398  
nliu@naicapital.com  
CalDRE #02038755



For Lease

# 13326-44 South Street



Population	1 Mile	3 Miles	5 Miles
TOTAL POPULATION	23,351	200,900	614,014
MEDIAN AGE	46	42	41
MEDIAN AGE (MALE)	44	41	39
MEDIAN AGE (FEMALE)	47	43	42
Households & Income	1 Mile	3 Miles	5 Miles
TOTAL HOUSEHOLDS	7,730	61,591	189,945
# OF PERSONS PER HH	3	3.3	3.2
AVERAGE HH INCOME	\$162,161	\$133,282	\$125,763
AVERAGE HOUSE VALUE	\$1,063,804	\$873,273	\$811,971
Race	1 Mile	3 Miles	5 Miles
% WHITE	17.0%	20.8%	26.0%
% BLACK	5.5%	5.0%	4.9%
% ASIAN	59.7%	40.1%	26.9%
% HAWAIIAN	0.4%	0.5%	0.5%
% INDIAN	0.6%	1.1%	1.4%
% OTHER	7.0%	19.5%	23.9%
Ethnicity	1 Mile	3 Miles	5 Miles
% HISPANIC	17.1%	36.3%	46.1%

\* Demographic data derived from 2020 ACS - US Census

## Steve Liu

Executive Vice President  
949.468.2385  
C: 714.349.3547  
sliu@naicapital.com  
CalDRE #01323150

## Nikki Liu

Senior Associate  
949.468.2386  
C: 818.744.3398  
nliu@naicapital.com  
CalDRE #02038755

**NAICapital**  
COMMERCIAL REAL ESTATE SERVICES, WORLDWIDE