

318 E. MILWAUKEE AVENUE
DETROIT, MICHIGAN

RETAIL FOR SALE
11,260 Square Feet Available

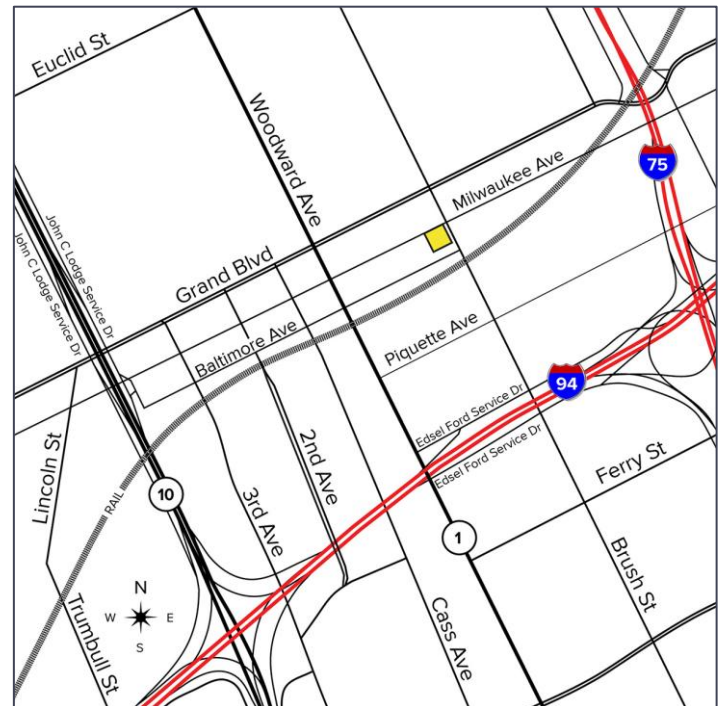


**SIGNATURE
ASSOCIATES**
KNOW SIGNATURE | KNOW RESULTS



PROPERTY FEATURES

- 11,260 square feet available
- 3 Floors: 3,252 square feet each
 - 1st Floor: Retail
 - 2nd & 3rd Floors: Apartments, 11 Units
- 1,504 square feet garage/storage building
- Zoned M3
- Sale Price: \$845,000 (\$75.04/sq. ft.)



For more information, please contact:

CHRIS MONSOUR
(248) 948 0107
cmonsour@signatureassociates.com

STEVE GORDON
(248) 948 0101
sgordon@signatureassociates.com

SIGNATURE ASSOCIATES
One Towne Square, Suite 1200
Southfield, MI 48076
www.signatureassociates.com

318 E. Milwaukee Avenue – Detroit, Michigan

Retail For Sale

11,260
Square Feet
AVAILABLE

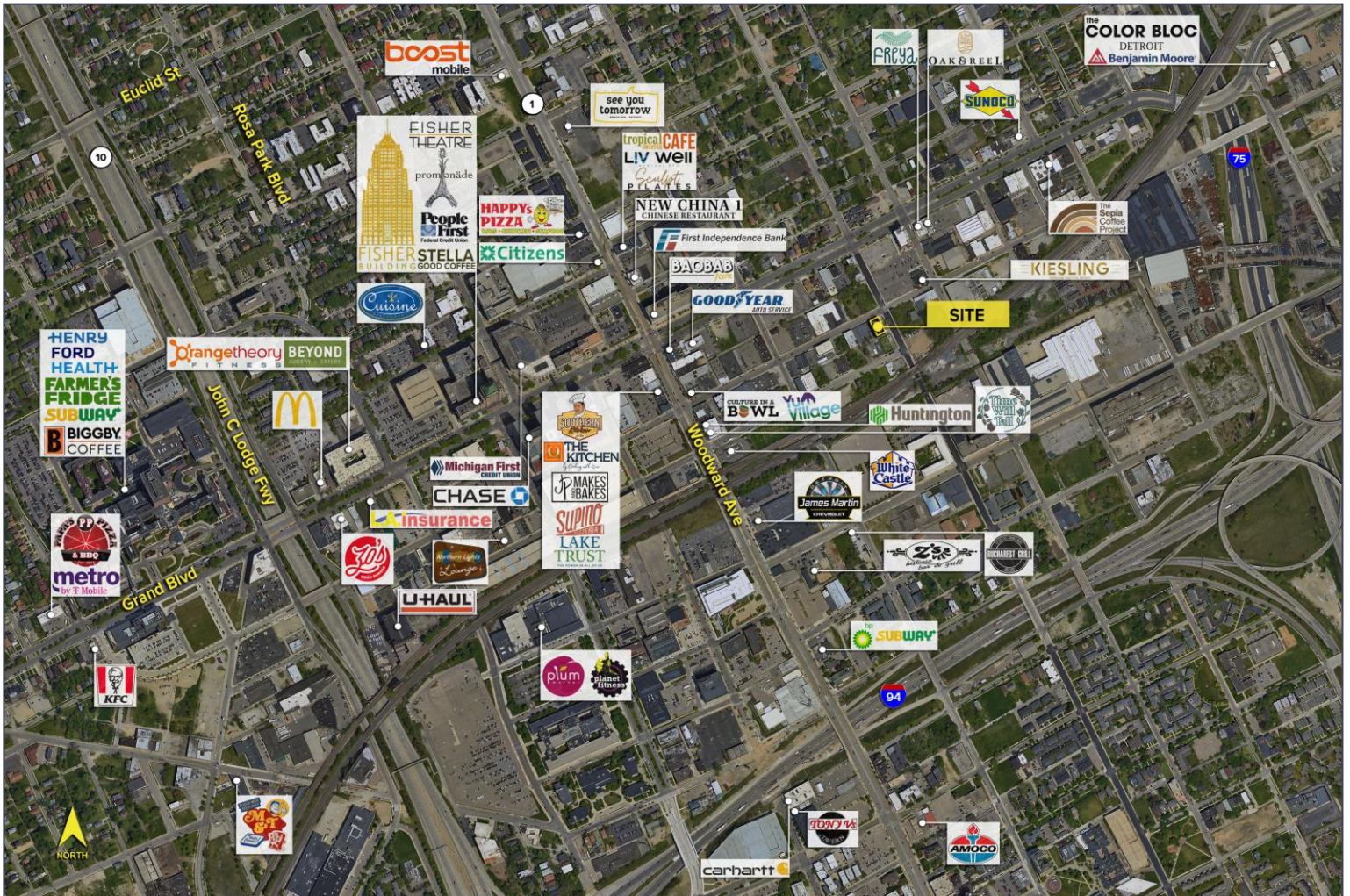


DEMOGRAPHICS

	POPULATION	MED. HH INCOME
1 MILE	13,579	\$42,350
3 MILE	142,040	\$43,250
5 MILE	320,351	\$42,375

TRAFFIC COUNTS (TWO-WAY)

16,511	E. Grand Blvd. E of Woodward Ave.
17,664	E. Grand Blvd. W of Woodward Ave.
25,756	Woodward Ave. S of E. Grand Blvd.
24,242	Woodward Ave. N of E. Grand Blvd.



For more information, please contact:

CHRIS MONSOUR
(248) 948 0107
cmonsour@signatureassociates.com

STEVE GORDON
(248) 948 0101
sgordon@signatureassociates.com

SIGNATURE ASSOCIATES
One Towne Square, Suite 1200
Southfield, MI 48076
www.signatureassociates.com