

FOR LEASE

1565 N CENTRAL EXPY



THE DETAILS

ADDRESS

1565 N Central Expy
Richardson, TX 75080

AVAILABLE

Office/Flex Space
1st Floor 3,417 SF
2nd Floor 7,323 SF

PARKING

55 Parking Spaces

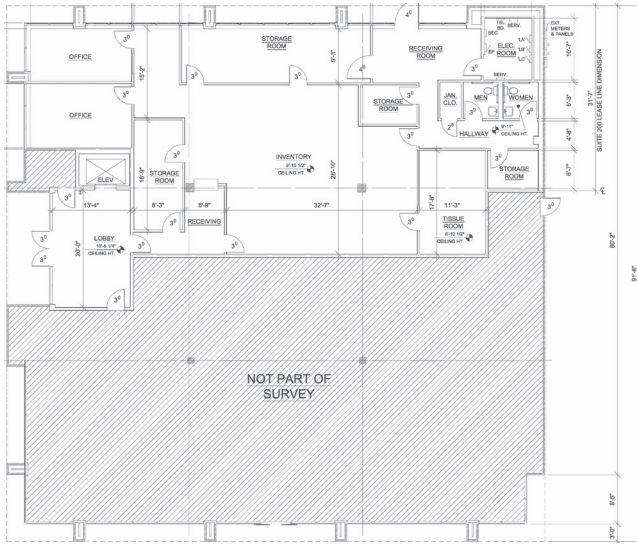
LOCATION

Easy Access to Central Expressway

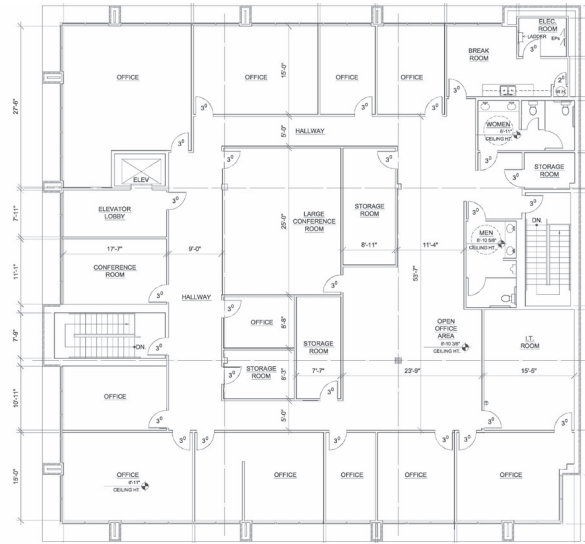


AVAILABLE SPACE

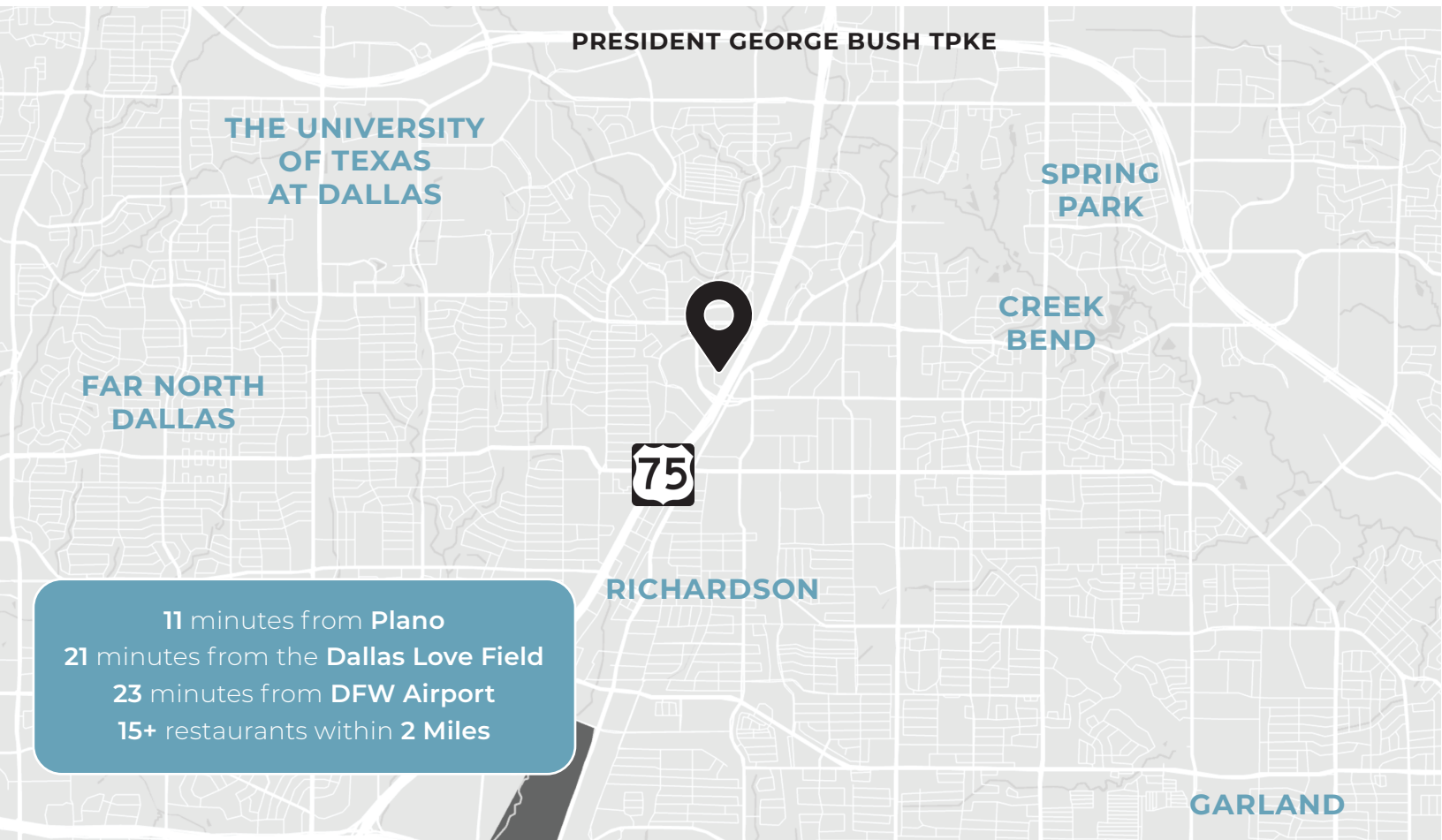
UP TO 10,740 SF



GROUND FLOOR



SECOND FLOOR



11 minutes from Plano
21 minutes from the Dallas Love Field
23 minutes from DFW Airport
15+ restaurants within 2 Miles