

# 457 West 125th Street

Between Morningside & Amsterdam Avenues  
Harlem





# 457 West 125th Street

Between Morningside & Amsterdam Avenues  
Harlem

SIZE: 570 SF Ground Floor

FRONTAGE: 20'

POSSESSION: Immediate

TRANSPORTATION: 1 A C B D

## HIGHLIGHTS:

- All uses considered
- Former Everytable
- 200 Amp service
- Accessible to all major transportation
- Space can be vented
- **Neighboring tenants include:** *Columbia University, T-Mobile, Duane Reade, Starbucks, Citibank, Medrite, Key Food, Dunkin', Joe Coffee, Domino's, C-Town, Foodtown, Charles Pan Fried Chicken, Nikko, Jimbo's Hamburgers, Oasis Juice Bar, Peking Garden, Toast 125, The Whale Tea, Dun Huang, Meli Cafe, The Riverside Theatre, Massawa, Vino Fine Wine Shop, West Place, Chokolat Patissarie, Culture Tea Bar*

CONTACT OUR BROKERS FOR MORE INFORMATION:

**BARRY FISHBACH**  
Fishbach@ksrny.com  
917.273.6752

**ORI MELLOUL**  
OMelloul@ksrny.com  
347.377.1392



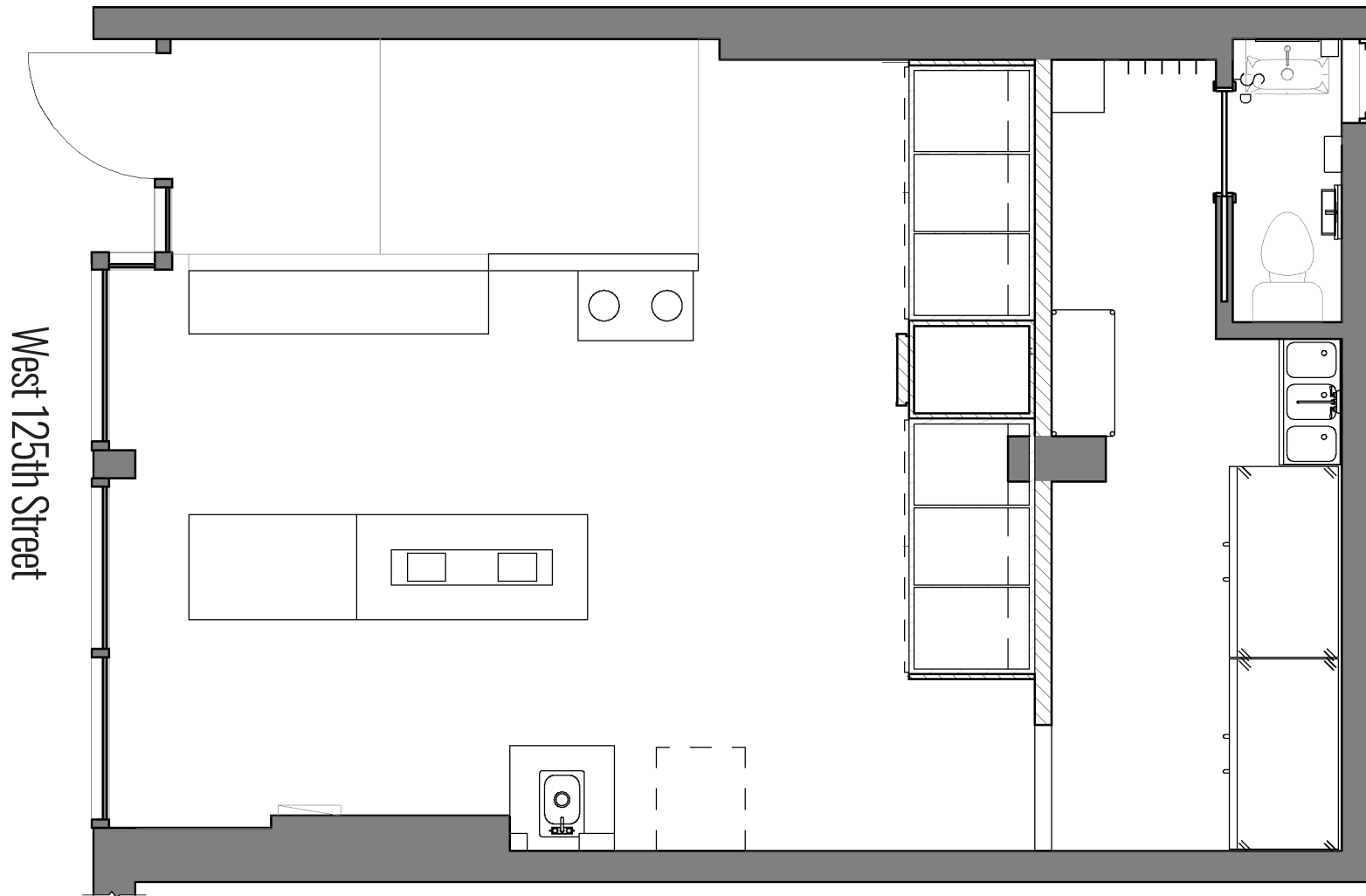
All information supplied in this marketing presentation and/or flyer is from sources deemed reliable and is furnished subject to errors, omissions, modifications, removal of listings from sale/lease and to any listing condition. Any square footage, dimensions, floor plans and/or technical data set forth are approximations and are subject to further elaboration/confirmation.



# 457 West 125th Street

Between Morningside & Amsterdam Avenues  
Harlem

Floor Plans:  
Ground Floor - 570 SF





# 457 West 125th Street

Between Morningside & Amsterdam Avenues  
Harlem

## Interiors:

