



# 3572 Maple Ave

Zanesville, OH 43701



## Offering Summary

Lease Rate:	\$13.00 SF/yr (NNN)
Building Size:	40,828 SF
Available SF:	1,439 SF
Lot Size:	5.82 Acres
Year Built:	1982
Zoning:	C-4
APN:	86-31-01-15-000

## Property Overview

This well-maintained strip center is home to several long-term tenants, reflecting its strong market appeal and stability. The available 1,439 SF suite features a predominantly open floor plan with a private office and restrooms at the rear. Ideal for retail or professional office use, this space would be a perfect fit for a shake shop, phone repair business, accountant, or insurance agency.

## Property Highlights

- 1,439 SF available suite
- Excellent visibility along high-traffic Maple Avenue
- Located at a signaled intersection for easy access
- Well-maintained strip center with long-term tenants
- Ideal for retail or professional office users
- Ample parking and convenient ingress/egress





# 3572 Maple Ave

Zanesville, OH 43701



Google

Map data ©2025 Imagery ©2025 Airbus, CNES / Airbus, Maxar Technologies, USDA/FPAC/GEO



Shai-Hess Commercial | 1471 Granville Road | Newark, OH 43055 | 740.587.7441 | shai-hess.com

Information contained has been established from sources that we have no doubt as to accuracy, but we do not guarantee it.





**SHAI•HESS**  
COMMERCIAL REAL ESTATE LLC.

Brokerage, Development, Management  
[www.shai-hess.com](http://www.shai-hess.com)



Additional Photos

# 3572 Maple Ave

Zanesville, OH 43701



Shai-Hess Commercial | 1471 Granville Road | Newark, OH 43055 | 740.587.7441 | [shai-hess.com](http://shai-hess.com)

Information contained has been established from sources that we have no doubt as to accuracy, but we do not guarantee it.

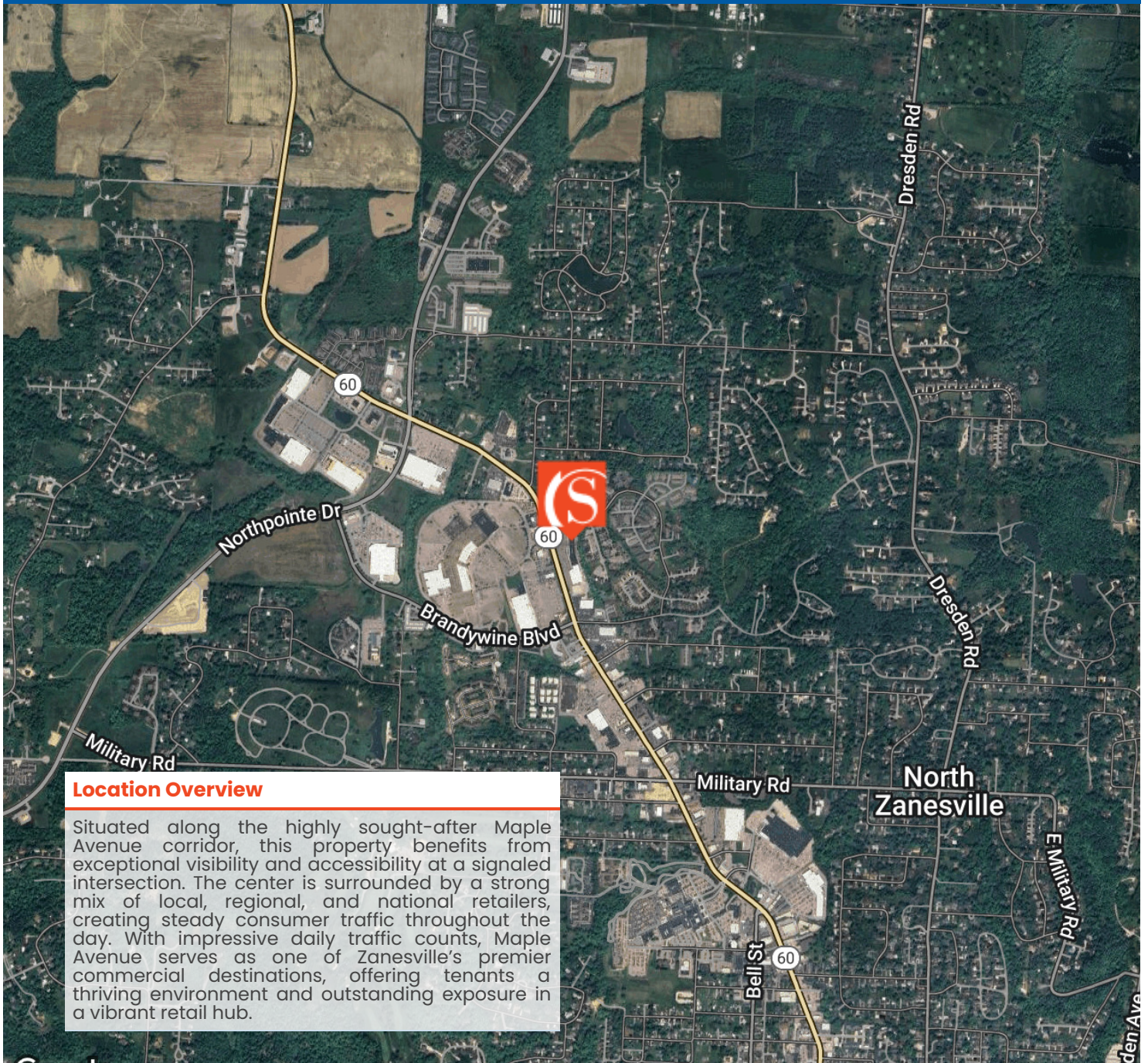






# 3572 Maple Ave

Zanesville, OH 43701



## Location Overview

Situated along the highly sought-after Maple Avenue corridor, this property benefits from exceptional visibility and accessibility at a signaled intersection. The center is surrounded by a strong mix of local, regional, and national retailers, creating steady consumer traffic throughout the day. With impressive daily traffic counts, Maple Avenue serves as one of Zanesville's premier commercial destinations, offering tenants a thriving environment and outstanding exposure in a vibrant retail hub.

Google

Map data ©2025 Imagery ©2025 Airbus, CNES / Airbus, Landsat / Copernicus, Maxar Technologies, USDA/FPAC/GE



Shai-Hess Commercial | 1471 Granville Road | Newark, OH 43055 | 740.587.7441 | [shai-hess.com](http://shai-hess.com)

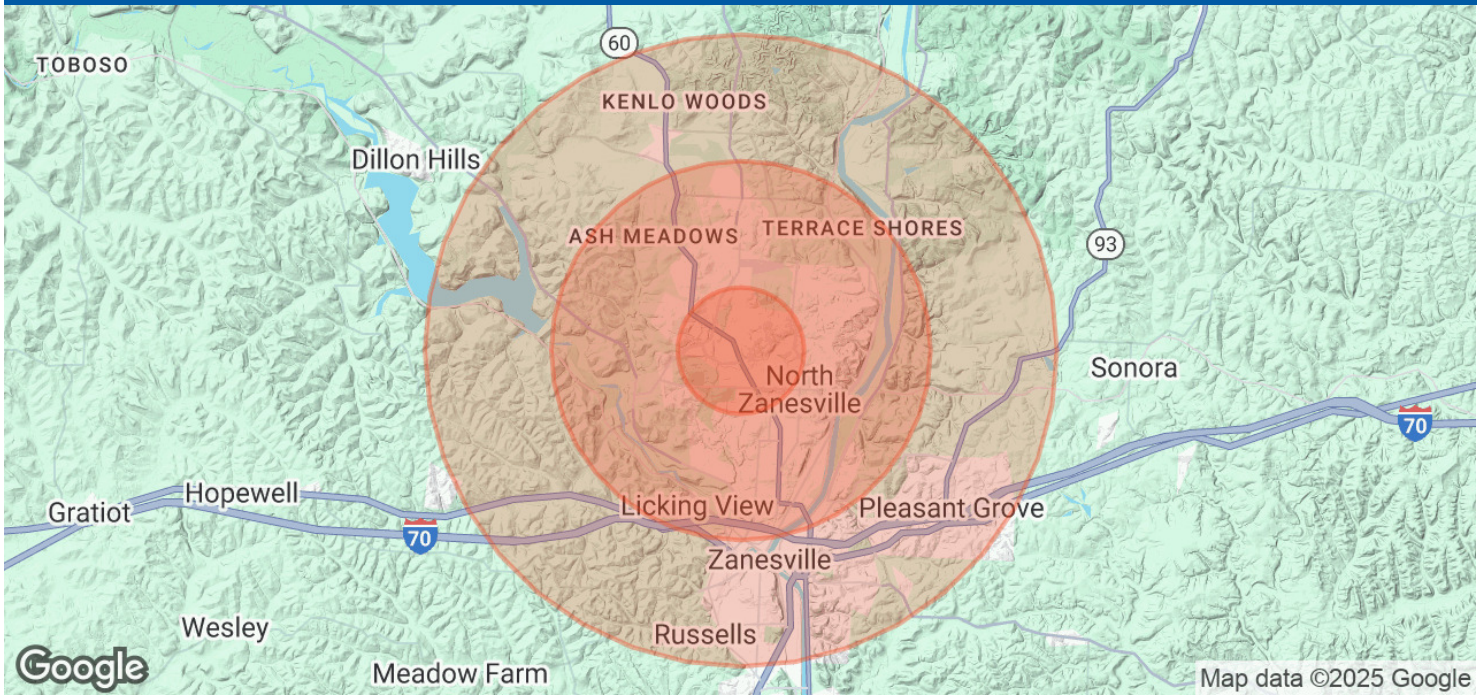
Information contained has been established from sources that we have no doubt as to accuracy, but we do not guarantee it.







## 3572 Maple Ave Zanesville, OH 43701



### Population

	1 Mile	3 Miles	5 Miles
Total Population	4,812	21,051	41,090
Average Age	48	44	42
Average Age (Male)	45	42	40
Average Age (Female)	50	46	43

### Households & Income

	1 Mile	3 Miles	5 Miles
Total Households	2,401	9,547	17,553
# of Persons per HH	2	2.2	2.3
Average HH Income	\$75,634	\$74,691	\$69,853
Average House Value	\$238,688	\$214,543	\$187,459

Demographics data derived from AlphaMap

