

COMMERCIAL LAND

71 TULE CREEK ROAD, HAYFORK, CA

±7.57 ACRES

FOR SALE



Ken Miller
530.768.1650
kenmiller@ncp-cre.com
DRE #: 00818540

Vanessa Castaño
530.768.1650
vanessa@ncp-cre.com
DRE #: 02104728

Northstate Commercial Partners
2070 Shasta Street
Redding, CA 96001
530.768.1650
www.ncp-cre.com

PROPERTY FEATURES *

- ±7.57 Acres (329,749 SF)
- Asking Price: \$425,000 (\$1.28/SF)
- Corner parcel
- Ready to build site
- All utilities available
- Under-served community
- All frontage improvements on Tule Creek & Hwy 3 are in place
- Zoned General Commercial
- APN: 014-430-77

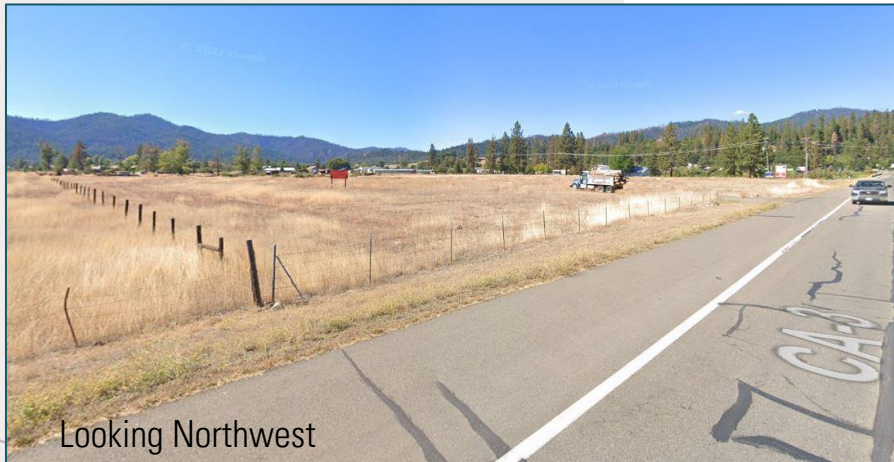


Looking Southwest

This is an excellent property for several needs in the Trinity County territory. The site is zoned "C-2 General Commercial". This broad and flexible zoning designation will support a number of business ventures, including:

- Self-Storage
- Service Station
- Car Wash
- Equipment Sales and Rental Yard
- Lumber Yard
- Wholesale Distributor
- Single-Family Residential (in support of a primary business...call broker)
- Hotel

Call Broker for details on use permit conditions, setbacks, and other planning requirements



Looking Northwest

* Buyer to independently verify

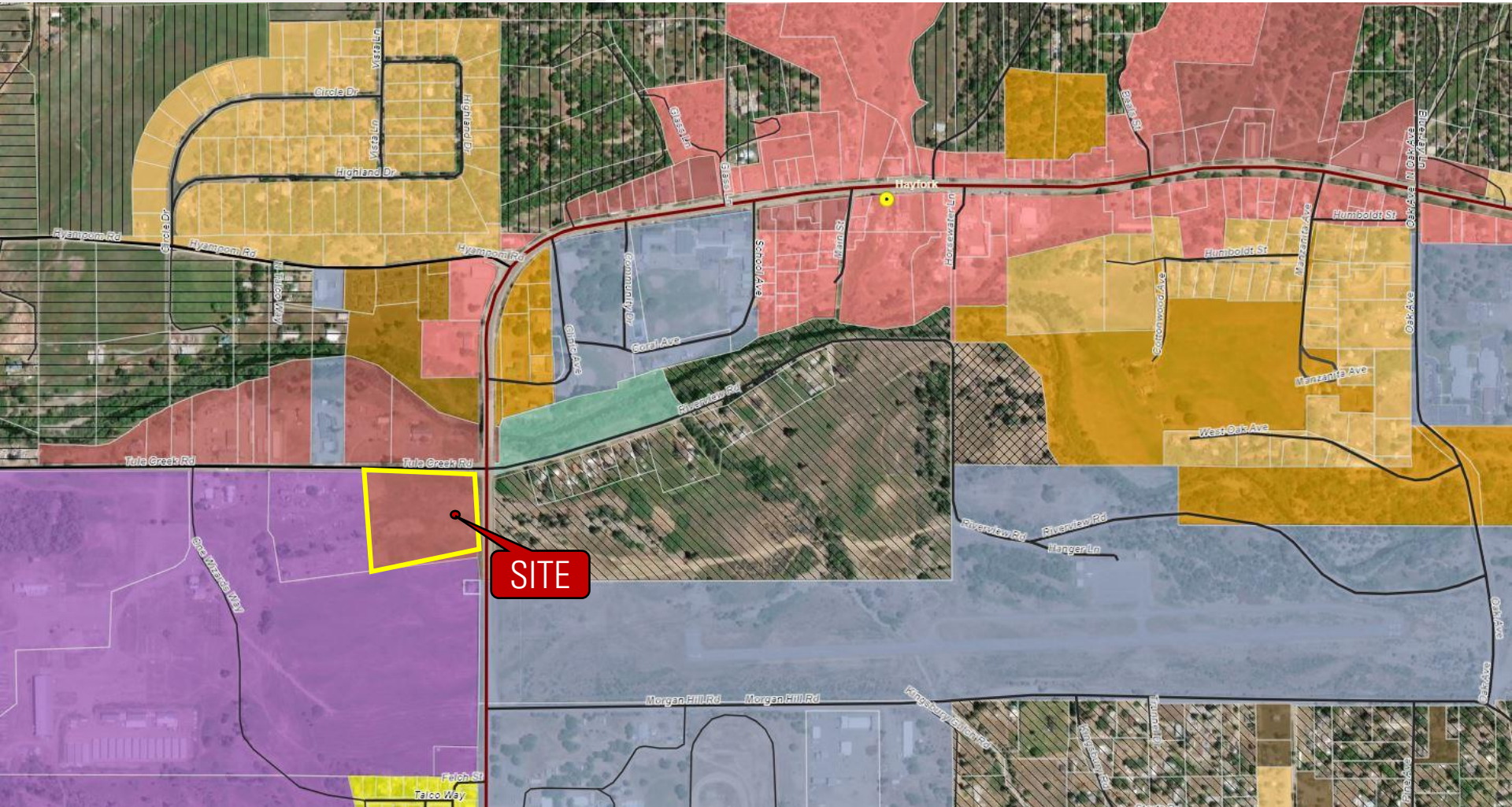


Ken Miller
530.768.1650
kenmiller@ncp-cre.com
DRE #: 00818540

Vanessa Castaño
530.768.1650
vanessa@ncp-cre.com
DRE #: 02104728

Northstate Commercial Partners
2070 Shasta Street
Redding, CA 96001
530.768.1650
www.ncp-cre.com

ZONING MAP



Ken Miller
530.768.1650
kenmiller@ncp-cre.com
DRE #: 00818540

Vanessa Castaño
530.768.1650
vanessa@ncp-cre.com
DRE #: 02104728

Northstate Commercial Partners
2070 Shasta Street
Redding, CA 96001
530.768.1650
www.ncp-cre.com

PARCEL MAP

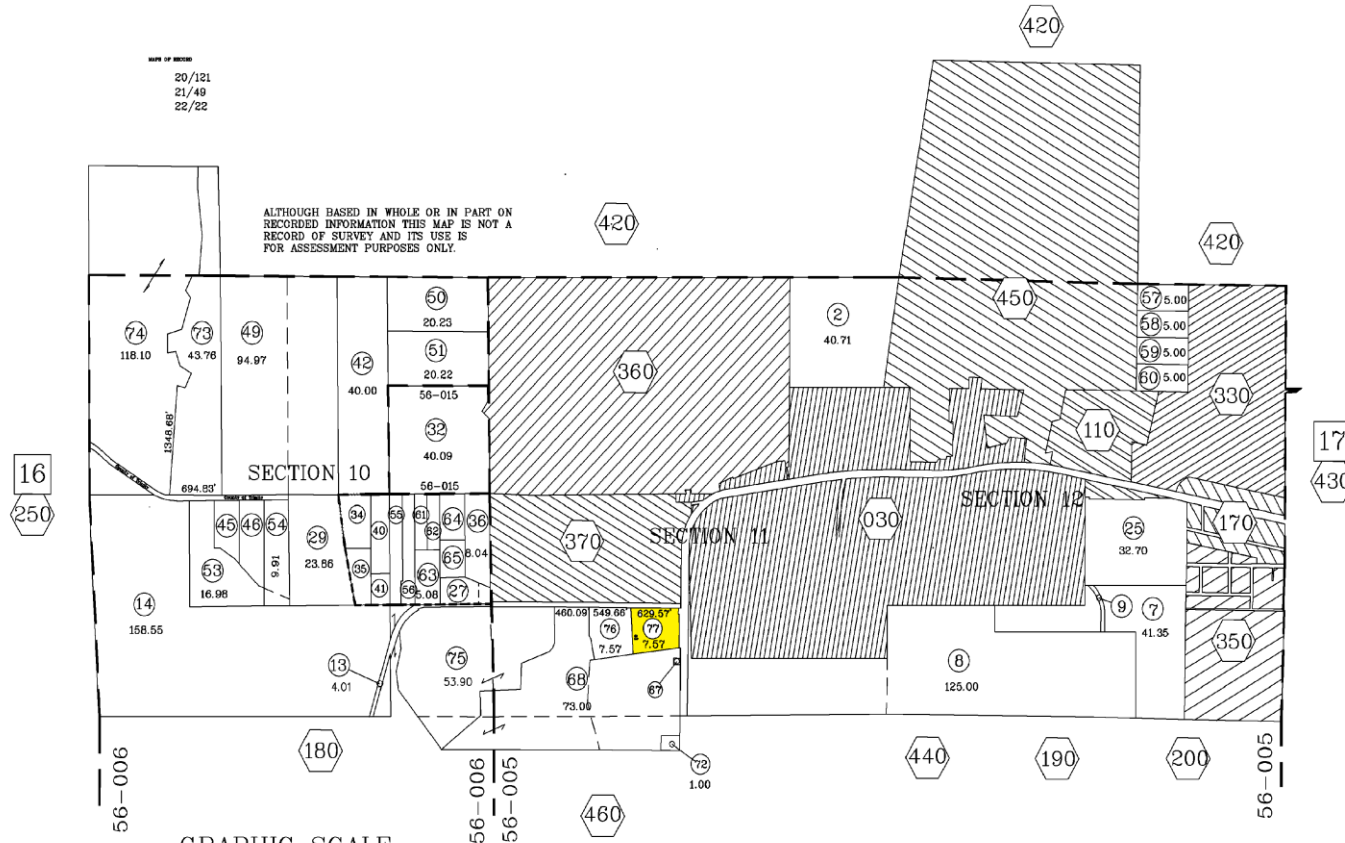
14-430

T.A.C. 56-005
56-006
56-015

SECTIONS 10, 11 & 12 AND A PORTION OF SECTION 1,
T. 31 N., R. 12 W., M.D.B. & M.

DATE OF RECORD
20/121
21/49
22/22

ALTHOUGH BASED IN WHOLE OR IN PART ON
RECORDED INFORMATION THIS MAP IS NOT A
RECORD OF SURVEY AND ITS USE IS
FOR ASSESSMENT PURPOSES ONLY.



GRAPHIC SCALE



(IN FEET)
1 inch = 1600 ft.

TRINITY COUNTY ASSESSOR'S OFFICE
BOOK FOURTEEN-PAGE FORTY-THREE

March 9, 2012

SM



Ken Miller
530.768.1650
kenmiller@ncp-cre.com
DRE #: 00818540

Vanessa Castaño
530.768.1650
vanessa@ncp-cre.com
DRE #: 02104728

Northstate Commercial Partners
2070 Shasta Street
Redding, CA 96001
530.768.1650
www.ncp-cre.com

THE MAP IS NOT THE TERRITORY

MAKE SURE YOU ARE WORKING WITH AN EXPERT
THAT KNOWS THE MARKET

For all your Northstate commercial real estate needs, turn to the market leader.

Northstate Commercial Partners brings over 70 years of combined experience to every assignment.

Affiliations in the SIOR & ICSC,

Northstate Commercial Partners can help you achieve your real estate goals.

Meet the Team:



KEN MILLER



DONNA POTTORFF



DEBBIE WALL



VANESSA CASTAÑO



Ken Miller
530.768.1650
kenmiller@ncp-cre.com
DRE #: 00818540

Vanessa Castaño
530.768.1650
vanessa@ncp-cre.com
DRE #: 02104728

Northstate Commercial Partners
2070 Shasta Street
Redding, CA 96001
530.768.1650
www.ncp-cre.com